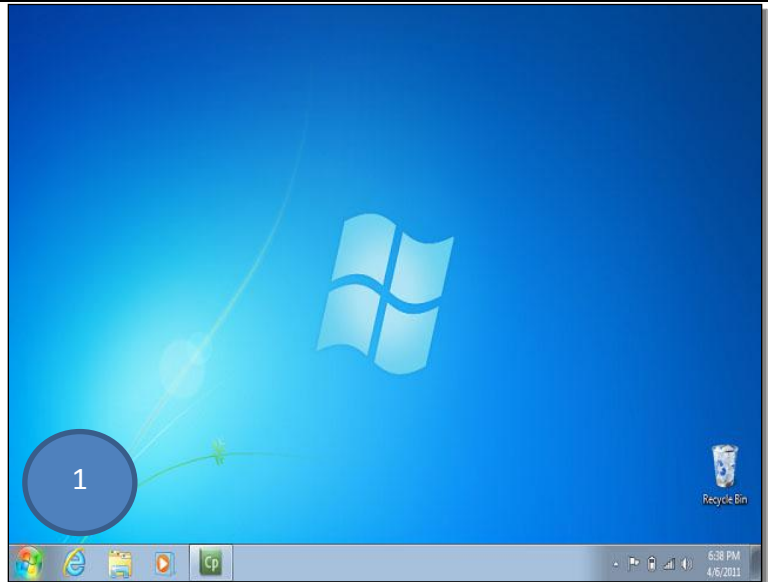




Windows 7 Wireless Printing Setup Guide

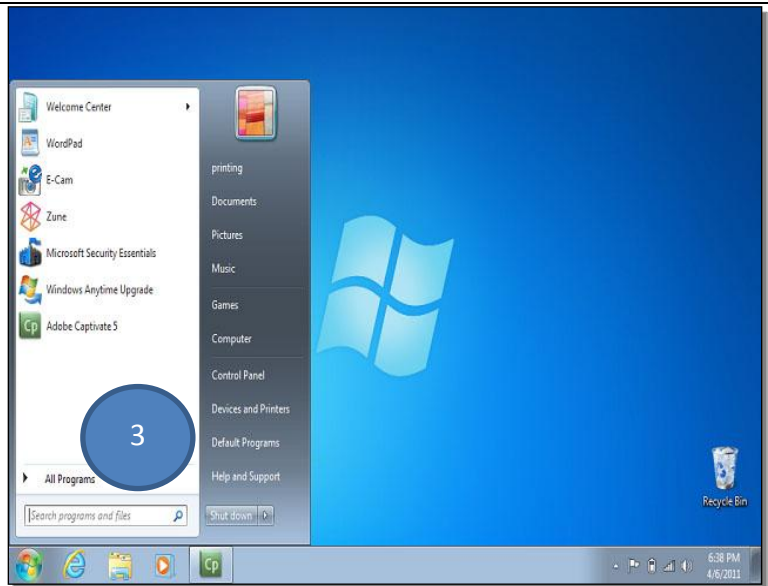
Make sure you are connected to the Students-Secure wireless network before you start configuring wireless printing

1. Click on the **Start** button



2. Select the **Search Box**

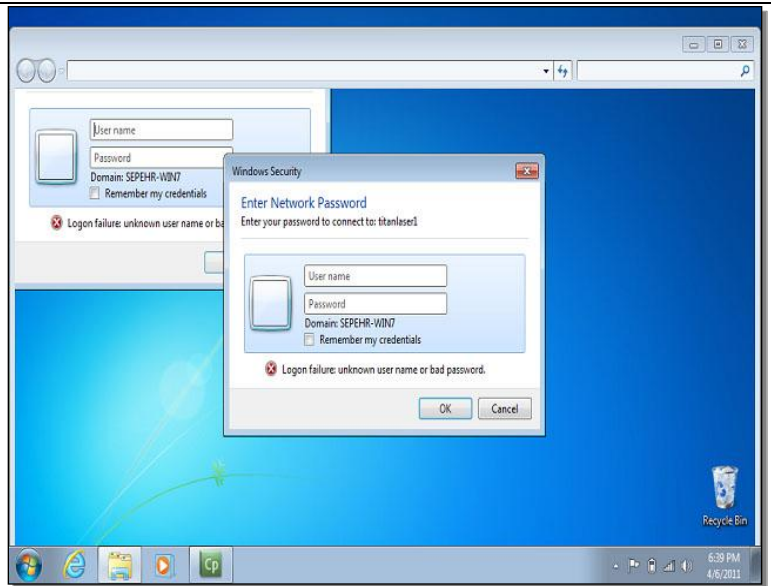
3. In the search box, type in the **name of printer** you want to add. Press **Enter** when you are done



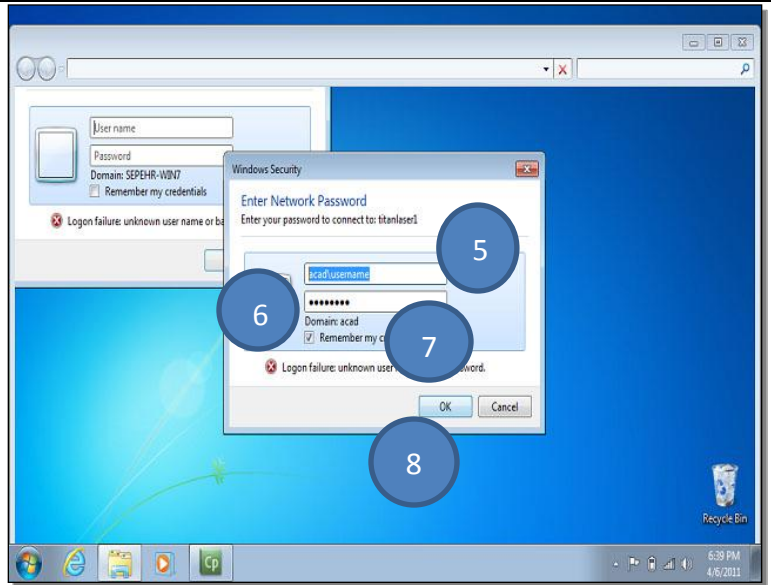
Location	Printer Name
First Floor North Side ER2 BW*	\\erprinter2
First Floor North Side Color	\\ilccolorlaser1
Basement North Side Titan Lab BW*	\\titanlaser2
Basement North Side Titan Lab Color	\\tl2bw1
McCarthy Commons Color	\\tl2color

BW* = Black and White Laser

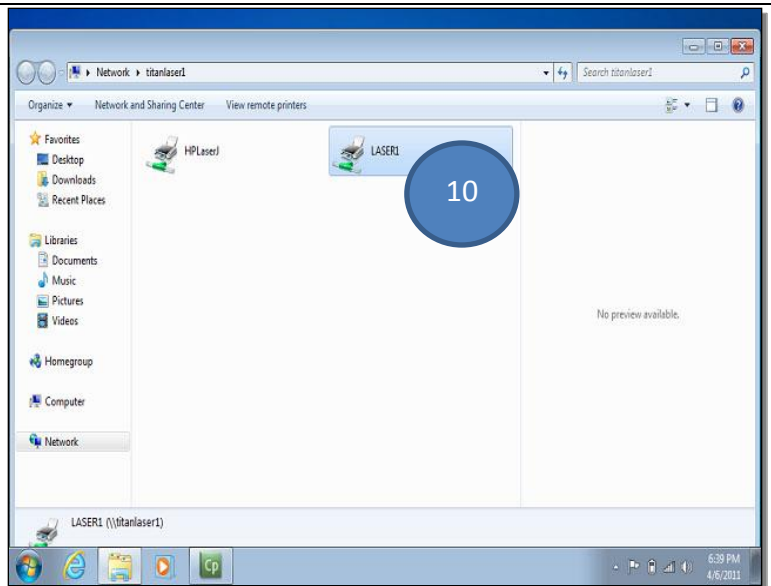
4. The Windows Security window will open



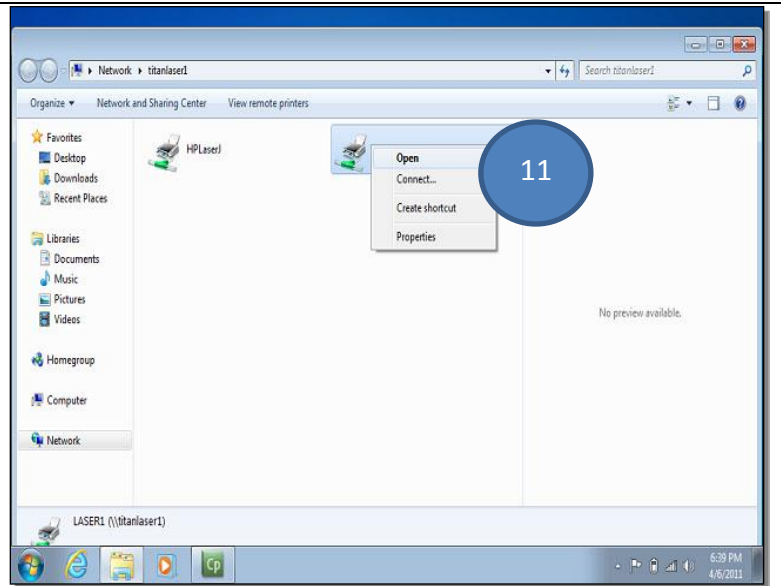
- 5. In **Username** type acad\username.
(The username would be your portal username)
- 6. In **Password**, type your **Portal password**
- 7. Check the **Remember my credentials check box**
- 8. Click **OK**, when you are finished typing your information



- 9. A list of your printers will show.
- 10. Right click on the print you have just added.



11. Click on **Connect**



12. Please wait while your printer is being connected.

13. Once the installation window disappears you have successfully added the printer

