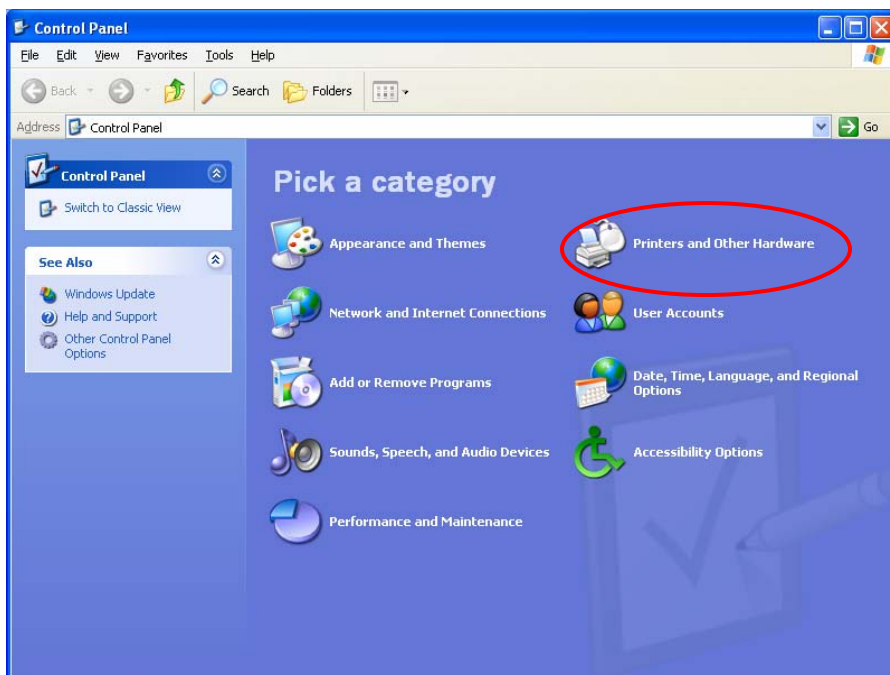


How to Add a Wireless Printer in Windows XP

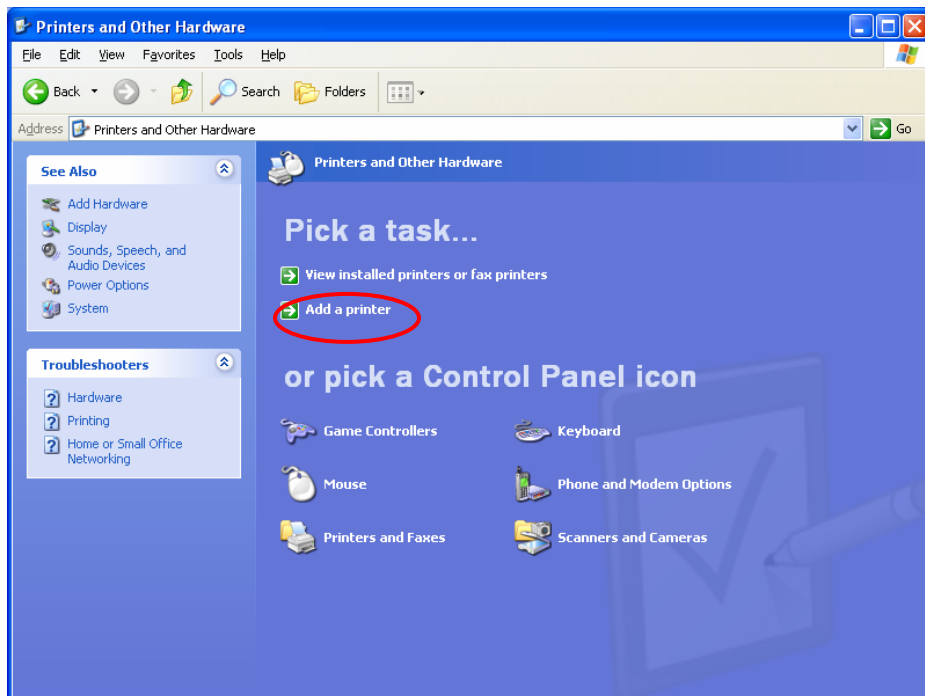
1. Click on “Start” → “Control Panel.”



2. Click on “Printers and Other Hardware.”



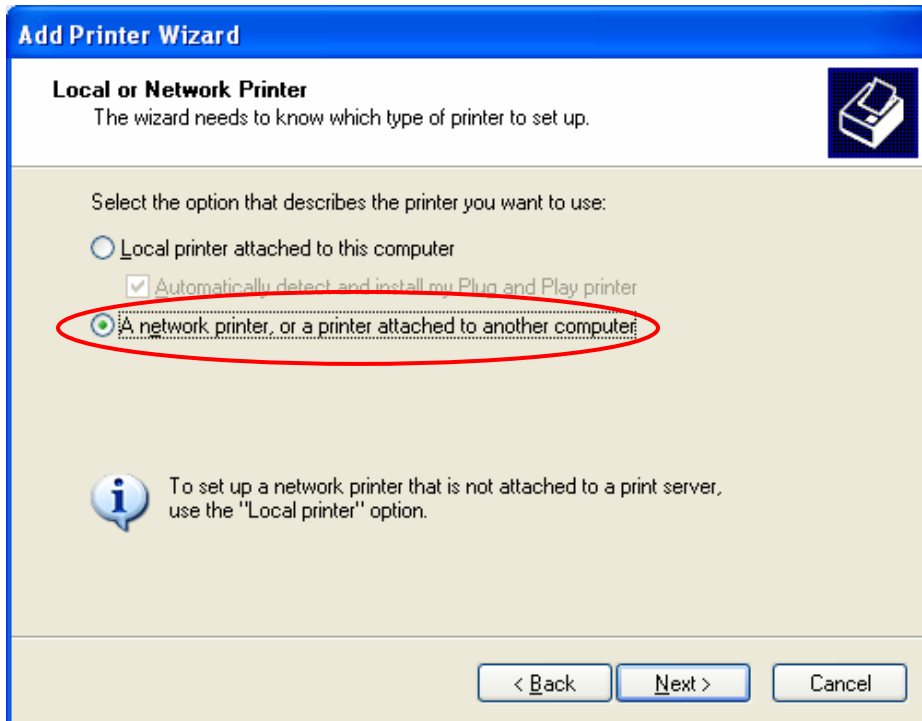
3. Click on “Add Printer.”



4. On “Add Printer Wizard” pop-up, click on “Next.”

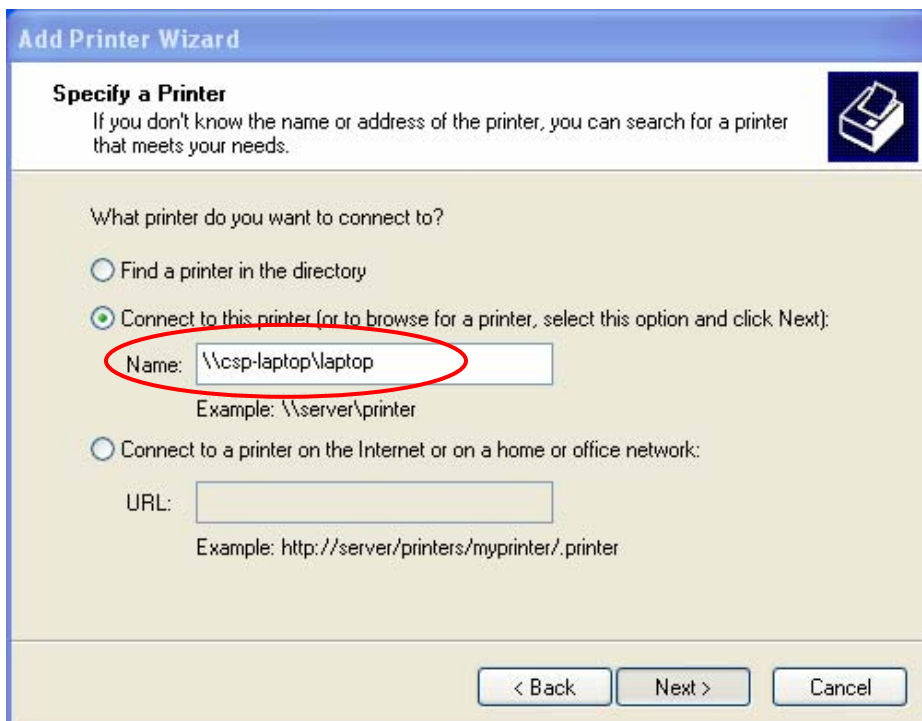


5. Select “A network printer, or a printer attached to another computer,” and click “Next.”



6. Select “Connect to this printer” and in the “Name” field, enter the following.
\\csp-laptop\laptop

Click on “Next” and wait for approximately 3 seconds for the next step.

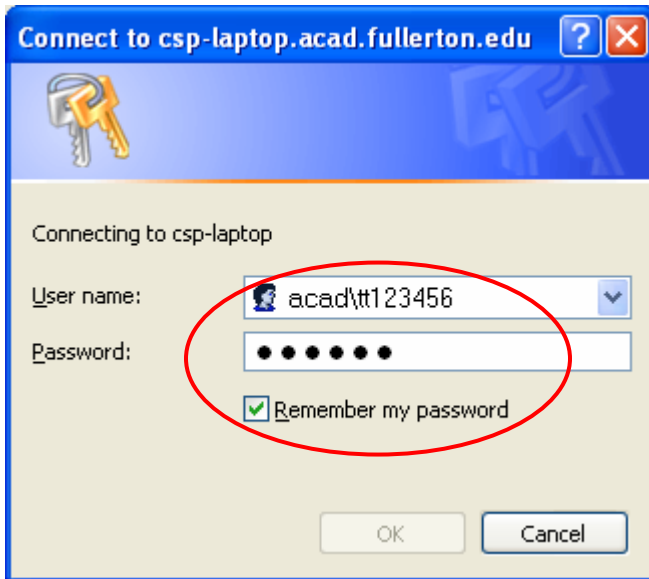


7. On “Connect to csp-laptop.acad.fullerton.edu” pop-up, enter the following information.

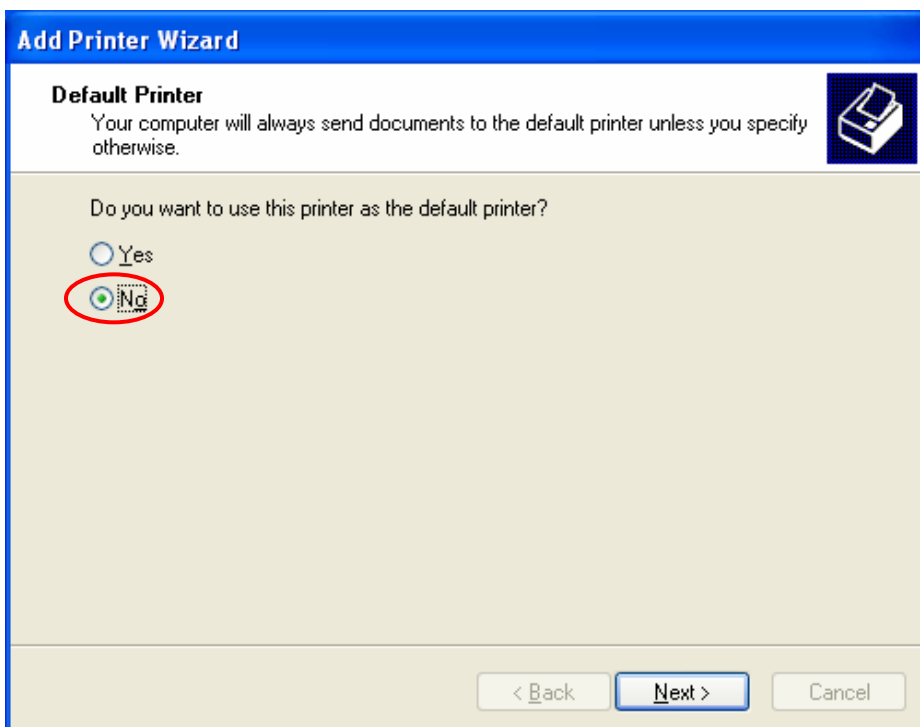
a. In the “User name” field, enter **acad\username**, where username is the first part of your campus email.

b. In the “Password” field, enter your 6-digit campus PIN.

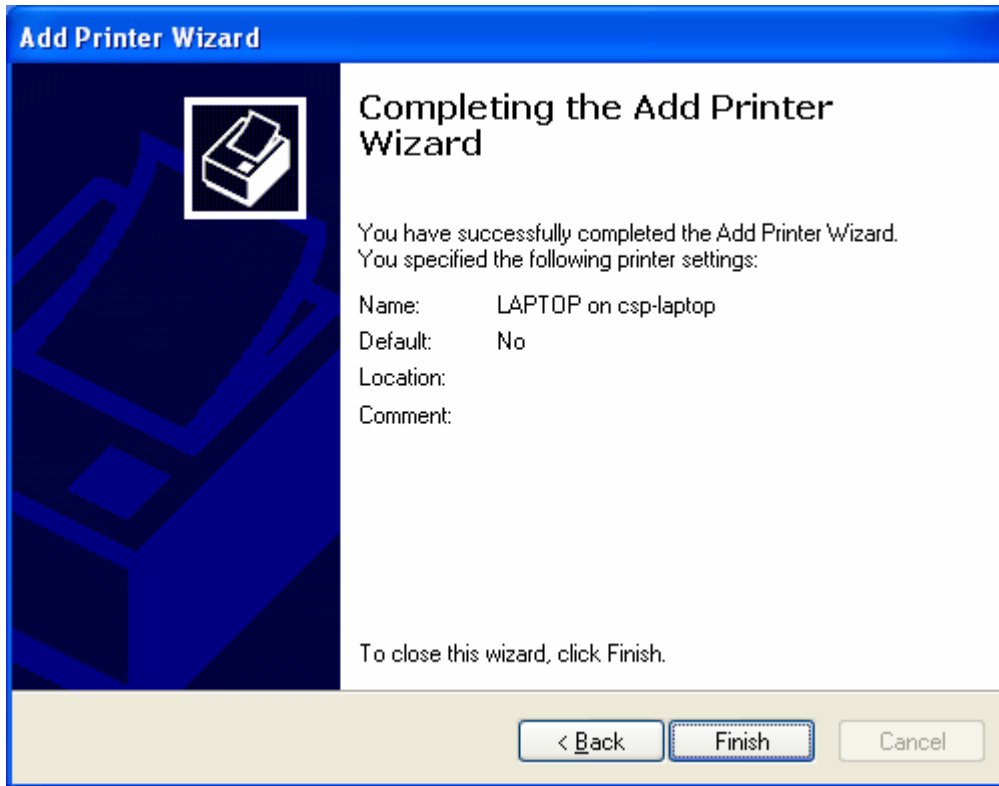
Select “Remember my password,” and click “OK.” Wait for approximately 1 minute for the next step.



8. Select “No” for “Default Printer” and click on “Next.”



9. Click “Finish” to complete the “Add Printer Wizard.”



10. To print from any programs (e.g. MS Word, Internet Explorer), click on “File” → “Print” and select “LAPTOP on csp-laptop” as the printer and click “Print.”

