



CAMPUS TECH MEETING

FRIDAY, APRIL 26, 2019

AGENDA

- Organizational
- IT Strategic Plan
- Disaster Recovery
- Multi-Factor Authentication (MFA)
- Server/Storage Announcements
- DNS/Firewall Rule Clean Up
- Payment Card Industry (PCI)
- Vulnerability Management
- Classroom Support
- Accessible Technology Initiative (ATI)
- AWS Educate
- Titan Online – PeopleTools Upgrade
- CHRS Recruit
- Titan Digital Signage
- Important Key Dates
- Survey



ORGANIZATIONAL UPDATES

BERHANU TADESSE

ORGANIZATIONAL UPDATES

- Rommel Hidalgo, AVPIT/Innovation Officer
- Anthony Keys, Research Tech (Data Analytics)

IT STRATEGIC PLAN UPDATES

- SWOT feedback collected from various campus constituents
- Responses were analyzed and themes were developed
- Goals were developed based on the themes

GOALS – DRAFT

- Goal 1: Student Success
 - Our students depend on technology as an integral part of their academic and social experience at CSUF. Social technology can foster a sense of belonging, increase student retention, and promote academic achievement. Technology is continuously changing and providing the most innovative technology will prepare students for success.
- Goal 2: Innovative Technologies
 - A culture of innovation is necessary for Titans to Reach Higher. As such, the Division of IT will continue to explore transformative technology for the campus community.

GOALS – DRAFT

- Goal 3: Inclusive Organizational Excellence
 - A diverse and inclusive work environment ensures staff have the skills, understanding, and time to influence the success of the division.

- Goal 4: Advanced Cyber Infrastructure
 - A robust and secured cyber infrastructure lays the foundation for all information technology services the university provides to its constituents.



INFRASTRUCTURE UPDATES

BERHANU TADESSE

DISASTER RECOVERY – MAY 25, 2019

Primary Project Manager – Pauline Knox

Failover

- 7:30 AM – Zoom Check-In
- 8:00 AM – Failover Exercise Begins
- 10:15 AM – Failover completes, Functional Testing Begin
- 2:00 PM – Zoom – End of Failover Status Check

Failback

- 2:15 PM – Start Failing Back Services to Campus
- 4:00 PM – Zoom Check-In - Start of Campus Testing
 - Testing by Campus Techs, SGC, IT Help Desk, Functional Groups
- 6:45 PM – Send All Clear Announcement
- 6:45 PM – Zoom Check-In End of Exercise

MULTI-FACTOR AUTHENTICATION (MFA)



Multi-Factor Authentication (MFA)

All Faculty & Student Assistants must

**ENROLL IN
MULTI-FACTOR
AUTHENTICATION
BY ~~MAY 15~~
to
OCT 15**

* Failure to enroll may restrict *
access to resources that
require portal sign-in.

Learn more and enroll in
Multi-Factor Authentication
fullerton.edu/mfa





SERVER / STORAGE ANNOUNCEMENTS

BILL ELBETTAR

SERVER INFRASTRUCTURE

- Summer 2019 – VMWare upgrades to Version 6.5
- June 2019 – Migrate all backup jobs from NetVault and Rapid Recovery into Rubrik backup – requires VMTools update
- End of 2019 – OLD VCL decommissioning
- Server OS patching



NETWORK UPDATE

JAY LIN

DNS / FIREWALL RULE CLEAN UP

- Elevating Security Awareness – Network clean up
- Infoblox DNS, DHCP, IP Address Management (DDI) solution
 - Migration completed during Spring Recess – April 2-5
 - DNS / IP address clean up
 - Stale / Aged DNS records – Assigned but no look up within 90 days
 - External DNS records validation – What record goes to external DNS servers
 - Incorrect DNS records – Name is not reflect to current server
 - Aged reserved IP address – IP was previously assigned used and retired. No activity within 120 days - 90 days
 - Scenario:
 - New server's MAC address -> Assigned reserved IP -> Firewall policy crafted based on assigned IP -> Server retired -> Security hole

DNS / FIREWALL RULE CLEAN UP

- Palo Alto Network Firewall migration
 - Completed Admin, Campus, and Acad Checkpoints to Palo Alto Network
 - Summer: VoIP Firewall, and DR Firewall
 - Firewall rule clean up
 - Firewall Request: Source IP, Destination IP and Ports
 - Firewall policy with “zero hit” / no counter in ninety day will get remove



INFORMATION SECURITY UPDATES

TONY MODIRI

PAYMENT CARD INDUSTRY (PCI)

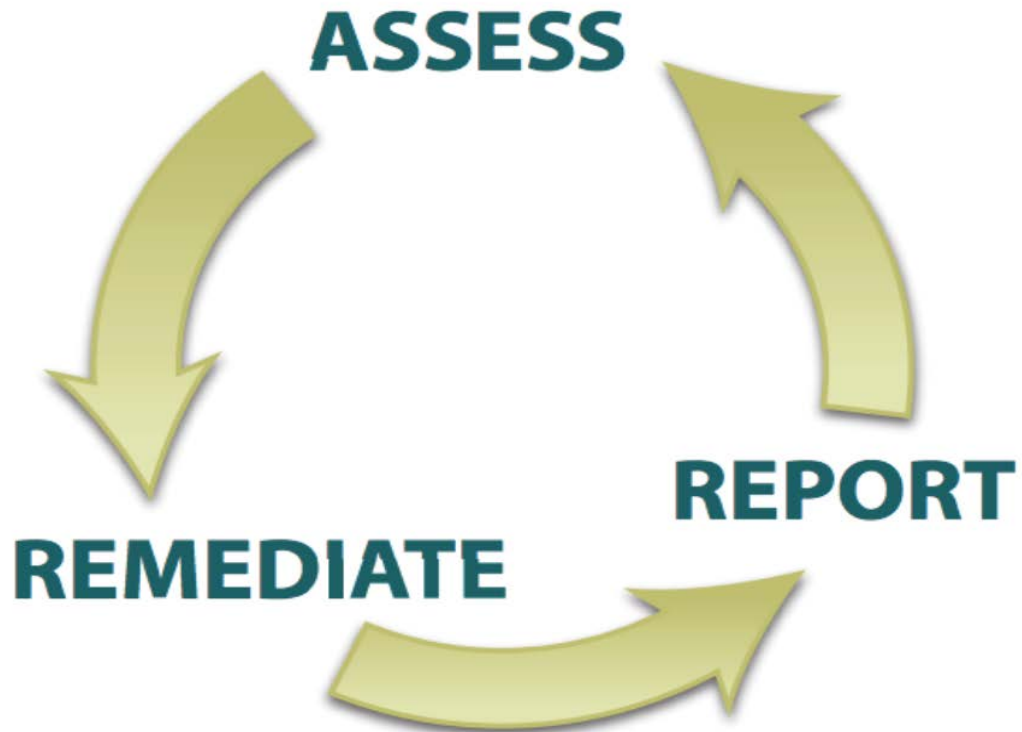
Goals	PCI DSS Requirements
Build and Maintain a Secure Network	<ol style="list-style-type: none">1. Install and maintain a firewall configuration to protect cardholder data2. Do not use vendor-supplied defaults for system passwords and other security parameters
Protect Cardholder Data	<ol style="list-style-type: none">3. Protect stored cardholder data4. Encrypt transmission of cardholder data across open, public networks
Maintain a Vulnerability Management Program	<ol style="list-style-type: none">5. Use and regularly update anti-virus software or programs6. Develop and maintain secure systems and applications
Implement Strong Access Control Measures	<ol style="list-style-type: none">7. Restrict access to cardholder data by business need-to-know8. Assign a unique ID to each person with computer access9. Restrict physical access to cardholder data
Regularly Monitor and Test Networks	<ol style="list-style-type: none">10. Track and monitor all access to network resources and cardholder data11. Regularly test security systems and processes
Maintain an Information Security Policy	<ol style="list-style-type: none">12. Maintain a policy that addresses information security for all personnel

PAYMENT CARD INDUSTRY (PCI)

- 6 Goals
- 12 Requirements
- 62 Main Clauses
- 289 Testing Procedures

PAYMENT CARD INDUSTRY (PCI)

**PCI COMPLIANCE IS A
CONTINUOUS PROCESS**



VULNERABILITY MANAGEMENT UPDATE

- EAB Contact Information
 - Ron Yanosky, Director of Strategic Research
 - Phone: 202-568-7956
 - Email: ryanosky@eab.com

VULNERABILITY MANAGEMENT UPDATE

- University of Calgary paid \$20K in ransomware attack (how video)
 - <https://www.cbc.ca/news/canada/calgary/university-calgary-ransomware-cyberattack-1.3620979>
- Hollywood hospital pays \$17,000 in bitcoin to hackers; FBI investigating
 - <https://www.latimes.com/business/technology/la-me-ln-hollywood-hospital-bitcoin-20160217-story.html>
- Los Angeles Valley College pays \$28,000 in bitcoin ransom to hackers
 - <https://www.latimes.com/local/lanow/la-me-ln-los-angeles-valley-college-hacking-bitcoin-ransom-20170111-story.html>

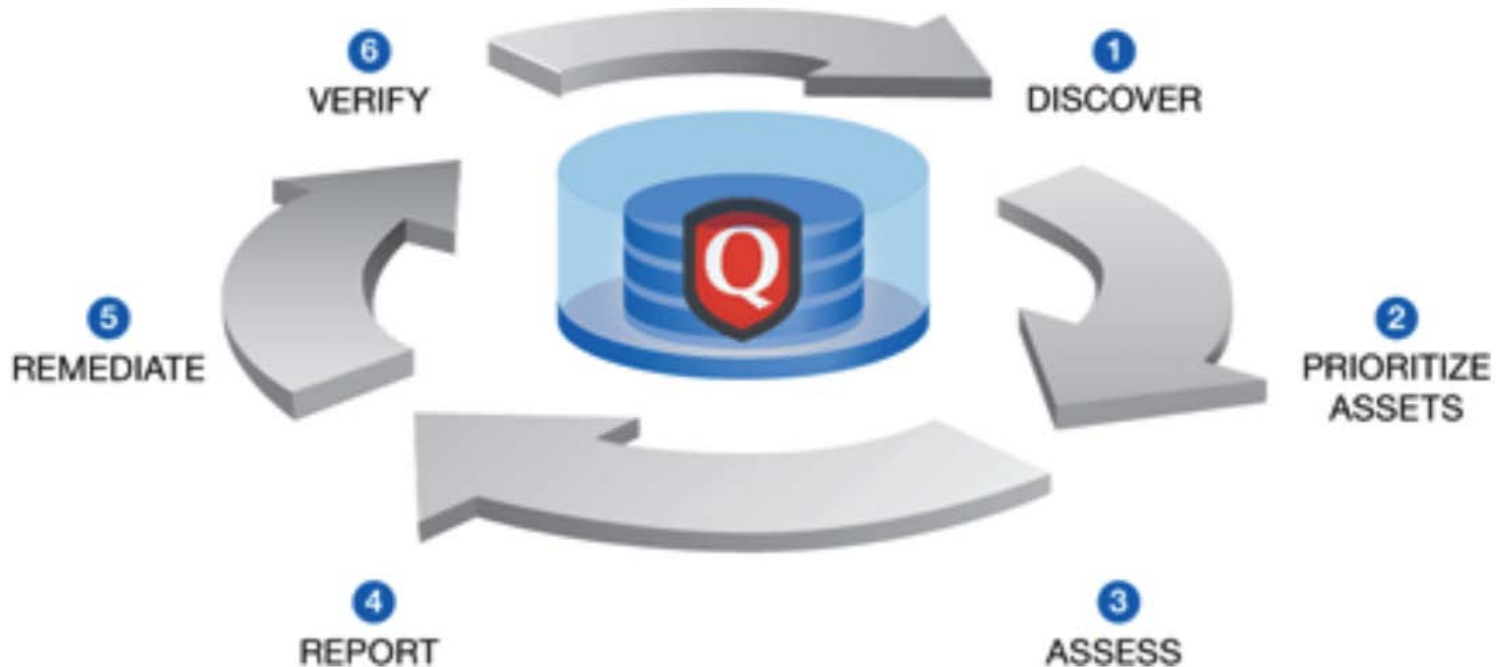
VULNERABILITY MANAGEMENT UPDATE


- Making Risks Relevant
- Demonstrating Vulnerabilities
- Incenting Secure Behavior

VULNERABILITY MANAGEMENT

Vulnerability Management is a **Continuous** Process

QualysGuard Vulnerability Management Lifecycle





ACADEMIC TECHNOLOGY UPDATES

WILLIE PENG

CLASSROOM SUPPORT

- Provide alternative method to submit incident in smart classroom computer
- App will be deployed via SCCM Summer 2019



Classroom Easy Ticket | IT @ Cal State Fullerton

Classroom Easy Ticket

Use this form to report an IT issue in the classroom.

Caller
wpeng

* Room number
LH700C

* Contact method
 Classroom Extension Alternate Number

* Permission to interrupt class
 Yes No

* Describe the issue you are experiencing

Equipment

Select Item(s)

<input type="checkbox"/> Apple TV	<input type="checkbox"/> Local Monitor
<input type="checkbox"/> Bluray Player	<input type="checkbox"/> Overhead Transparency Projector
<input type="checkbox"/> Button Panel Controller	<input type="checkbox"/> Podium Microphone
<input type="checkbox"/> Computer	<input type="checkbox"/> Program Audio
<input type="checkbox"/> Doc Camera	<input type="checkbox"/> Projector
<input type="checkbox"/> DVD Player	<input type="checkbox"/> Projector Screen
<input type="checkbox"/> Help Line Phone	<input type="checkbox"/> Touch Panel
<input type="checkbox"/> iBeacon	<input type="checkbox"/> TV
<input type="checkbox"/> iClicker	<input type="checkbox"/> VCR
<input type="checkbox"/> LAN	<input type="checkbox"/> Video Conference Camera
<input type="checkbox"/> Laptop Input HDMI	<input type="checkbox"/> Webcam
<input type="checkbox"/> Laptop Input VGA	<input type="checkbox"/> Wi-Fi
<input type="checkbox"/> Lectern	<input type="checkbox"/> Wireless Microphone
<input type="checkbox"/> Lecture Capture Camera	<input type="checkbox"/> Custom...
<input type="checkbox"/> Lighting Controls	

ACCESSIBLE TECHNOLOGY INITIATIVE (ATI)

CSU ATI Framework: Policy – EO 1111 and ATI Coded Memos – 3 Priority Areas Web, Procurement, Instructional Materials

**Capability Maturity Model: 24 Goals & 150+ Success Indicators
Continuous Process Improvement with
Strong Executive Support**

**Make a
Campus
Plan**

CSU The California State University
ACCESSIBLE TECHNOLOGY INITIATIVE

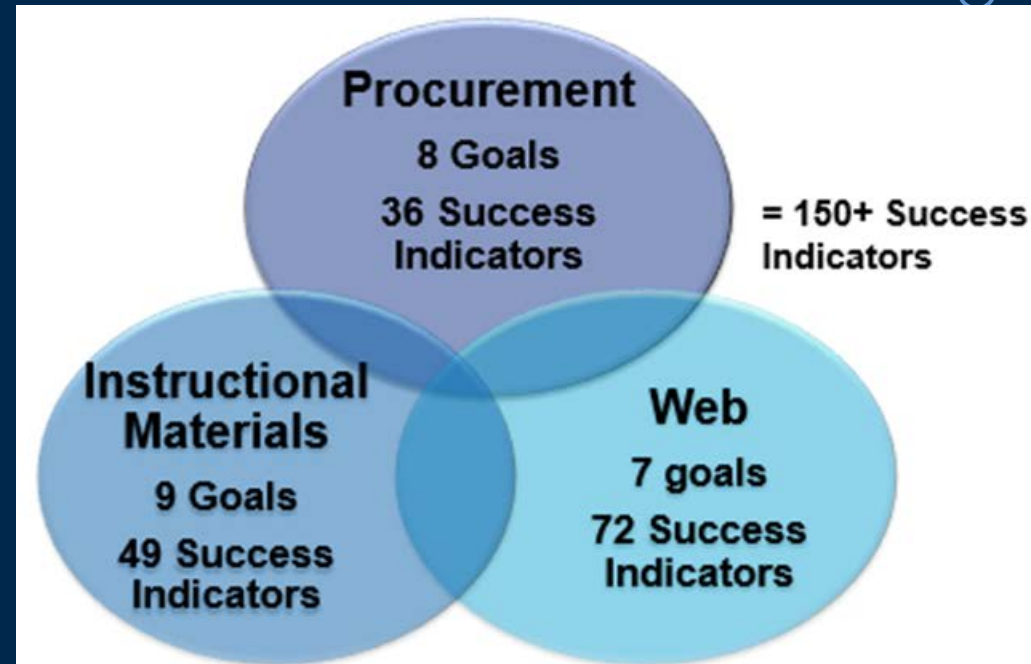
**Measure
Progress**

**Work the
Campus
Plan**

CSU Systemwide Audit and Business Services

ACCESSIBLE TECHNOLOGY INITIATIVE (ATI)

- CSUF state of ATI
- Governance
 - Steering Committee
 - Working Group
 - Web Accessibility
 - Instructional Material
 - Procurement
- New ATI Website



AWS EDUCATE

- Platform to learn AWS
- Free training + 75 AWS credits + 1 year AWS access
- Sign up via TITANium (contact Willie Peng)

The screenshot displays the AWS Educate platform interface, which is a grid of 12 learning path cards. Each card features an icon, a title, a brief description, and two buttons: 'START' and 'LEARN MORE'. The cards are arranged in three rows and four columns.

Learning Path	Description	Buttons
Cloud Computing 101 Icon: A lightning bolt and a checkmark with the text 'A GOOD PLACE TO START!'	Take a crash course on the cloud, its history, solutions, and why companies across the globe are looking for employees with AWS cloud expertise.	CONTINUE, LANGUAGE
Application Developer Icon: A computer monitor with a checkmark and an upward arrow	Curious how App Developers design, test, and improve engaging web and mobile applications in the cloud? Learn more about the skills you'll need.	START, LEARN MORE
Cloud Support Associate Icon: A speech bubble with an equals sign	If you're excited by the future of cloud computing and enjoy working directly with customers, learn more about becoming a Cloud Support Associate.	START, LEARN MORE
Cloud Support Engineer Icon: A wrench and a screwdriver	Interested in multiple technologies and working with companies to support AWS cloud solutions? Learn more about becoming a Cloud Support Engineer.	START, LEARN MORE
Cybersecurity Specialist Icon: A shield with a checkmark	Cybersecurity Specialists use expertise in networking, programming, and coding to protect customer data every day. Learn more about the skills they use.	START, LEARN MORE
Data Integration Specialist Icon: A funnel with data points	Excited about bringing data sources together to tell the story of a product's performance? Discover ways to build and improve products through data.	START, LEARN MORE
Data Scientist Icon: A cube with data points	Curious how discovering patterns in large data sets can translate into new business strategies? Learn more about how Data Scientists do this every day.	START, LEARN MORE
DevOps Engineer Icon: A gear with a checkmark	If you like working behind the scenes to tackle challenges and are curious about skills like scripting and coding, learn more about becoming a DevOps Engineer.	START, LEARN MORE
Machine Learning Scientist Icon: A brain with a gear	Curious how artificial intelligence and predictive modeling are used to create dynamic experiences? Learn more about becoming a Machine Learning Scientist.	START, LEARN MORE
Software Development Engineer Icon: A computer monitor with a gear and a checkmark	If you're a builder who wants to learn more about using software engineering principles to design original applications, explore the skills you'll need.	START, LEARN MORE
Solutions Architect Icon: A person with a cloud and a checkmark	Curious how Solutions Architects deliver strategic, scalable AWS cloud infrastructures to their customers? Learn more about the skills they use every day.	CONTINUE, LANGUAGE
Web Development Engineer Icon: A code editor with a checkmark	If you're interested in developing innovative web experiences through software design and programming, learn more about the skills you'll need.	START, LEARN MORE



ENTERPRISE RESOURCE PLANNING UPDATES

JOE LUZZI / RAMESH PUROHIT

TITAN ONLINE – PEOPLETOOLS UPGRADE

- PeopleTools 8.55 to PeopleTools 8.56
- Technical Upgrade - Mandated by CO
- No Functional Impact
- Status - Testing in Progress
- Go-Live Plan – Monday, June 17, 2019
- CMS Outage Start – June 14, 2019 at 5:00 PM
- Communication to Campus planned

CHRS RECRUIT UPDATE

- CHRS Recruit (PageUp)
 - Students, Staff, Faculty
- Integration with PeopleSoft HR (CHRS)
 - Data files
 - API – Future
- New Job Posting Site: <http://hr.fullerton.edu/career/>
- Security
 - Reports
 - Campus Isolation
- Training
 - CO Providing Training / User Guides

CHRS RECRUIT UPDATE

- Go-Live March 28th
 - Emergency Hires Only
- Go-Live April 28th
 - MPP, Staff, and Non-Represented Student Assistants
- Go-Live May 28th
 - Full Time and Tenure Faculty
- Go-Live June 30th
 - Part-Time Lecturers and represented student employees



TITAN DIGITAL SIGNAGE

ROMMEL HIDALGO

TITAN DIGITAL SIGNAGE

As part of the Division of Information Technology's Strategic goal of implementing technologies to proactively communicate with and engage the campus community, IT will commence an ongoing effort to install outdoor and indoor digital signage.

The content of the digital signage will be dynamic, pertinent to community of users of the area that the signage is installed in, and controllable by the academic and administrative units of those areas.

Note: These were the proposed locations at the time of the presentation.

IMPLEMENTATION FOR COLLEGES

- Indoor Lobby Areas to get 65” - 75” LED Displays
 - 20 Displays (65”- 75”) in building lobbies
 - Schools and Colleges will be able to upload and control content for their units
 - 55” Interactive Wayfinding Maps in main Lobbies

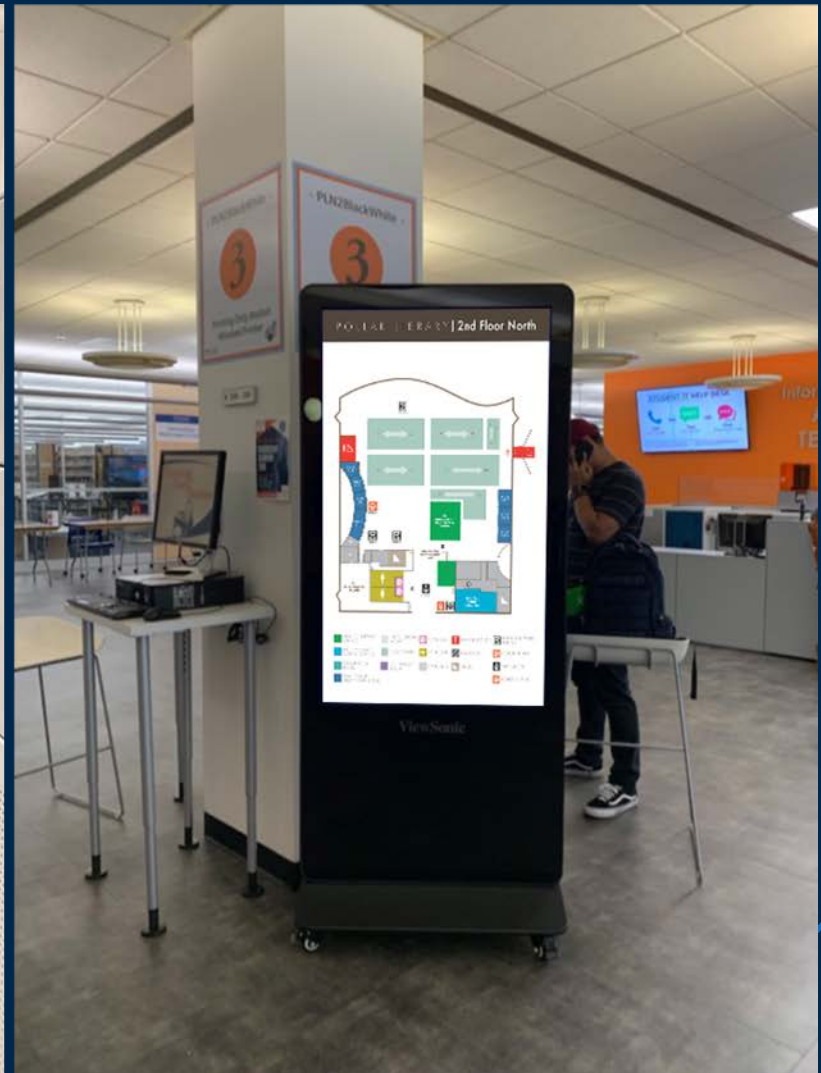
OUTDOOR LOCATIONS

- 4-6 on new promenade and Titan Walk
 - 85” Samsung Outdoor Displays
- 3 GEO Location Interactive Touchscreen Maps
- 4 Large LED Direct View Outdoor Displays

INDOOR LOCATIONS

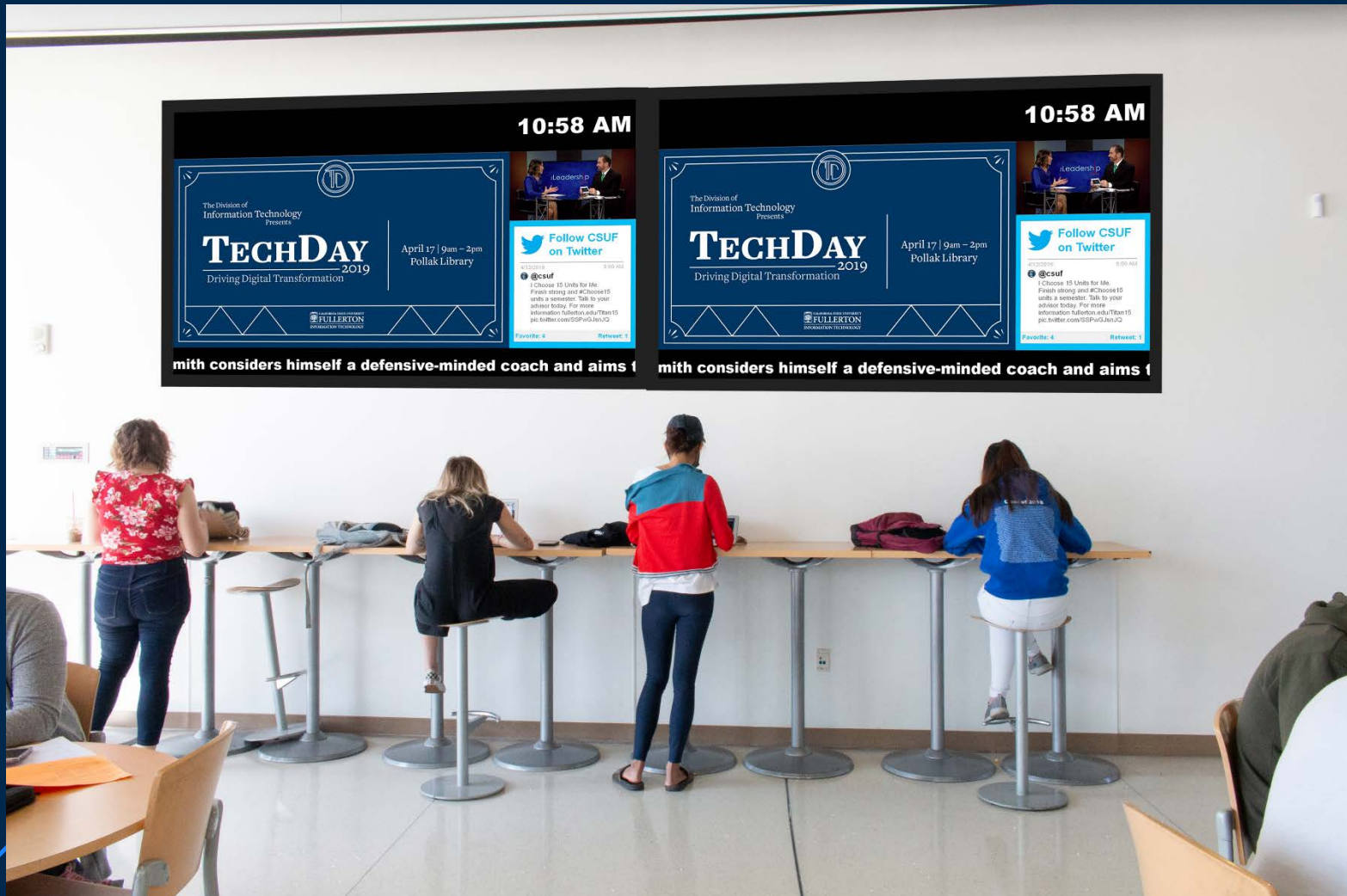
- We are planning for the following implementations of 65” - 75” Indoor Digital Displays
 - Two in the Lobbies of: College Park, SGMH, McCarthy Hall, Pollak Library
 - One in the Lobbies of: HSS, Langsdorf Hall, Gordon Hall, Education Classroom, Engineering, Kinesiology, Titan Gymnasium, Visual Arts, Dan Black Hall, Titan Bookstore
- For each of the above locations, an indoor interactive digital map will also be installed.

INTERACTIVE MAPS IN THE LOBBIES



STEVEN G. MIHAYLO HALL DIGITAL SIGNAGE

This wall is on the other side of the Starbucks front entrance at SGMH.



MCCARTHY HALL



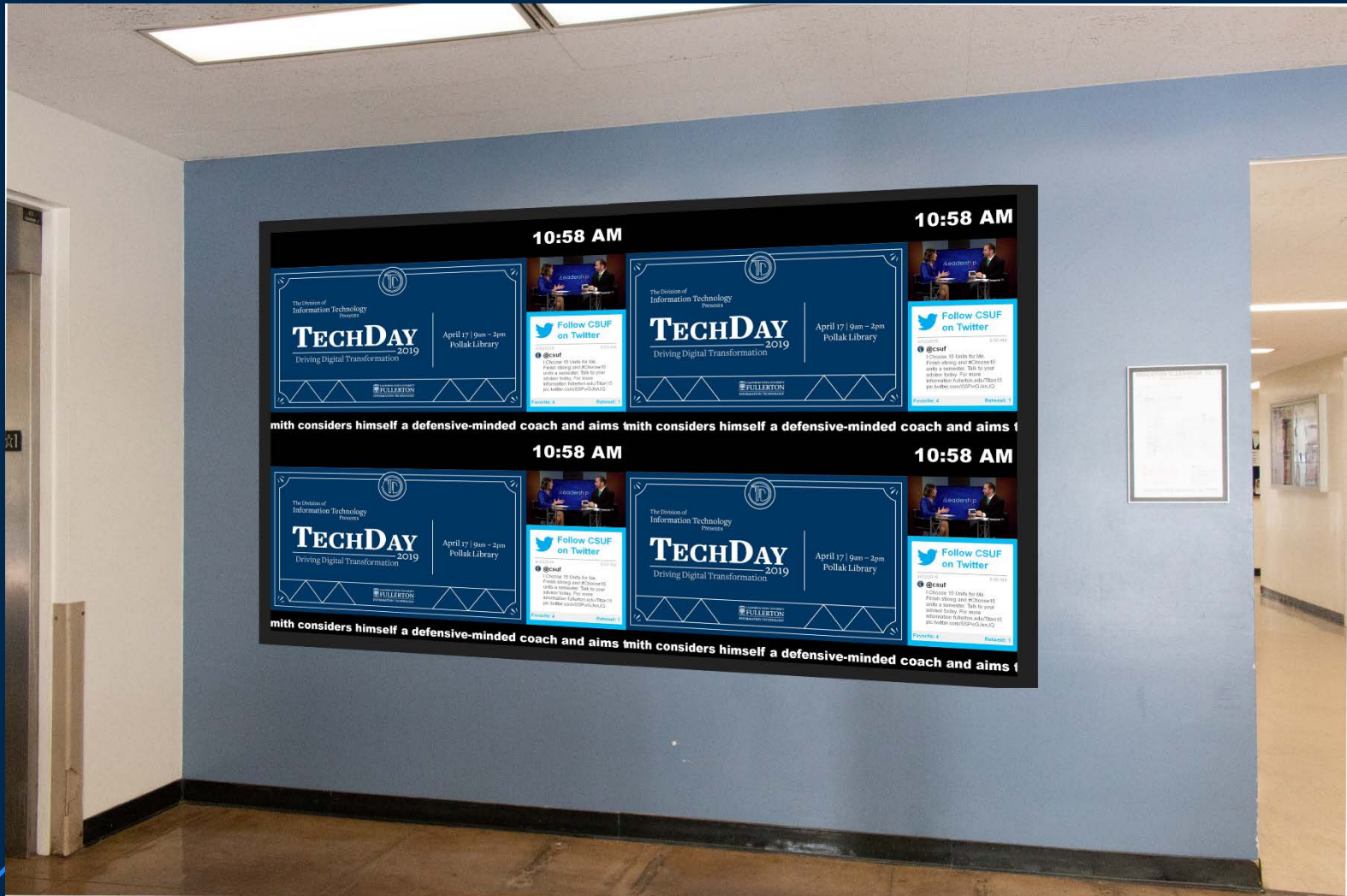
LANGSDORF HALL LOBBY

This is in front of the LH elevators.

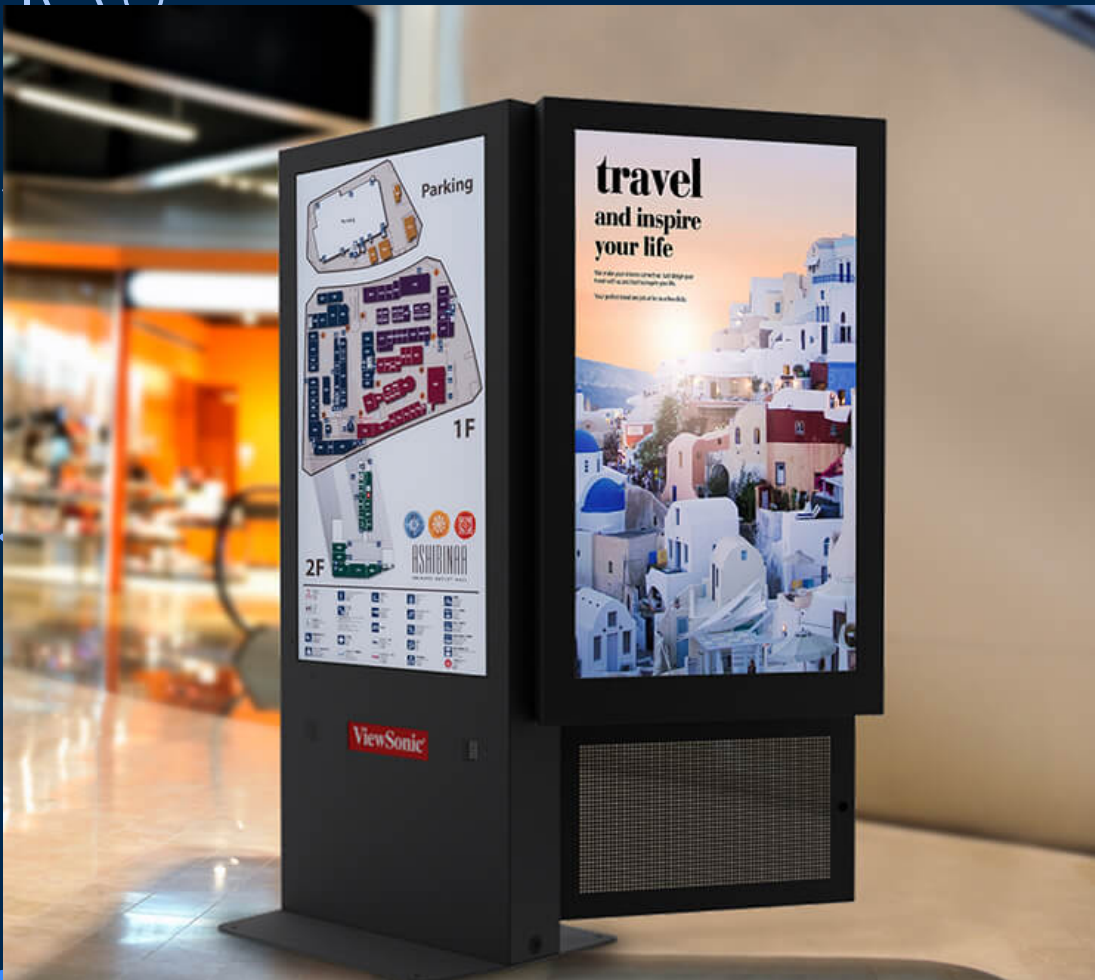


KINESIOLOGY LOBBY

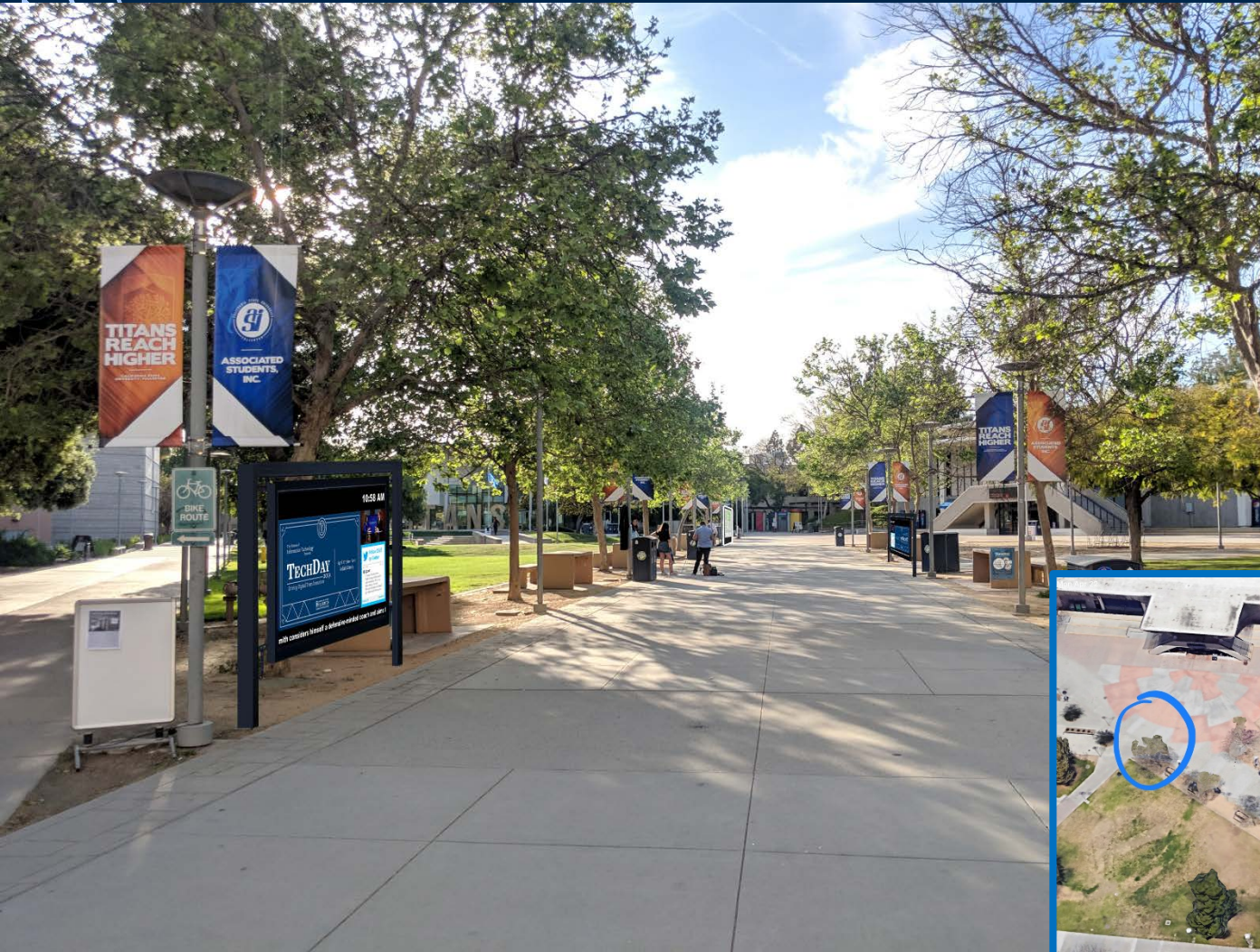
This display area is beside the Kinesiology lobby elevator.



INTERACTIVE MAPS



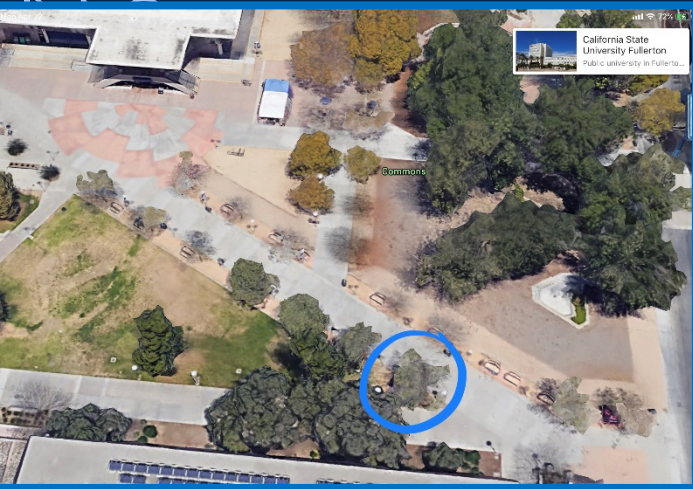
TITAN WALK SMALL OUTDOOR DIGITAL SIGNAGE



- 85” Samsung placed along Titan Walk
- Can be placed horizontally or vertically



TITAN WALK SMALL OUTDOOR DIGITAL SIGNAGE

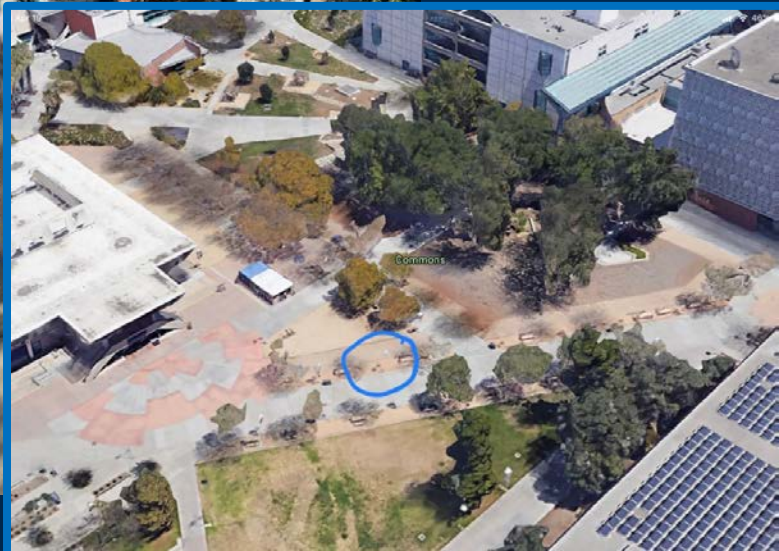


85" horizontally placed display with black metal



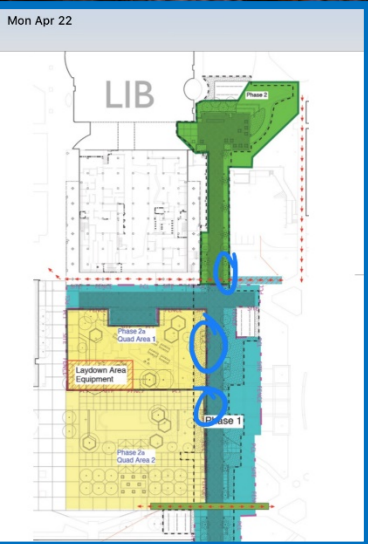
TITAN WALK SMALL OUTDOOR DIGITAL SIGNAGE

85" outdoor signage shown in white decorative casing



PROMENADE SMALL OUTDOOR DIGITAL SIGNAGE

This is the artist rendering for the completed promenade.



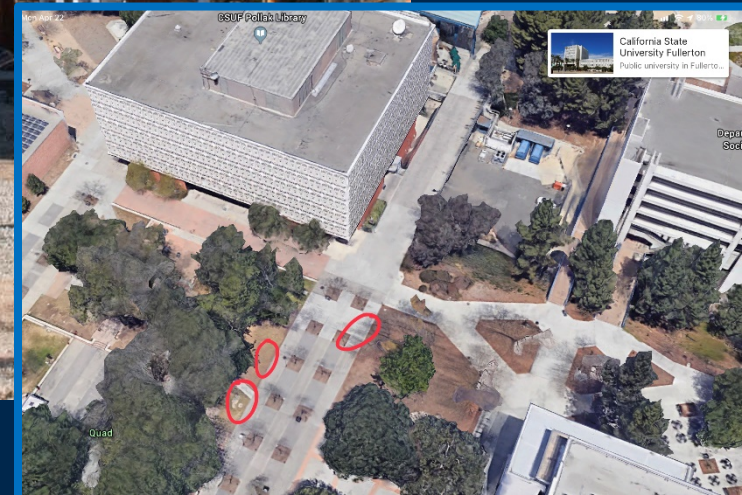
PROMENADE SMALL OUTDOOR DIGITAL SIGNAGE

This is the artist rendering for the completed promenade.

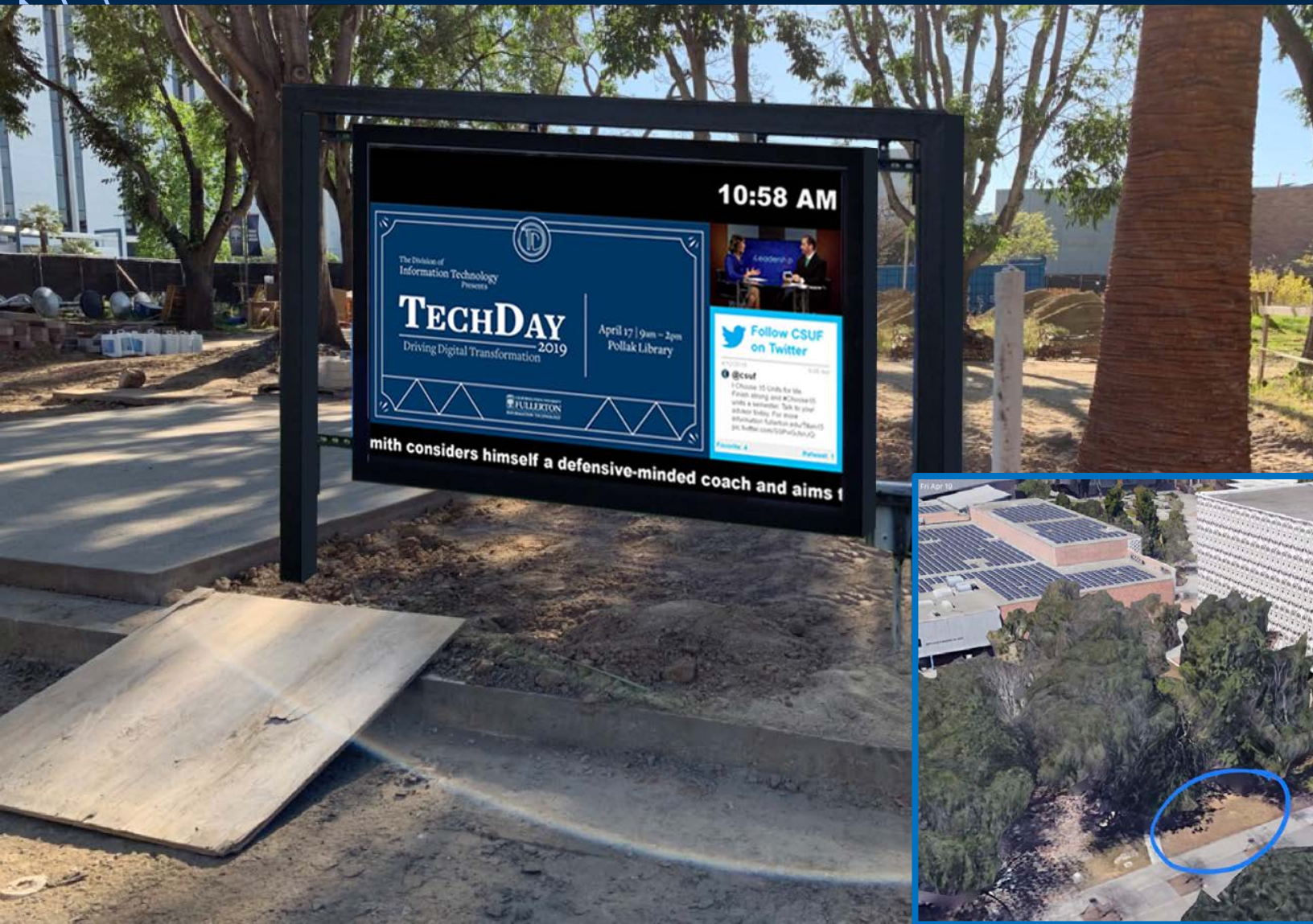


POSSIBLE LOCATIONS FOR PROMENADE DIGITAL SIGNAGE

- Signs need to be near lighting power source
- Signs will be seamlessly aligned with the proposed design of the Promenade



PROMENADE SMALL OUTDOOR DIGITAL SIGNAGE



LANGSDORF HALL SIDE ENTRANCE - BEHIND TITAN GATE



PROMENADE INTERACTIVE WAYFINDING MAP

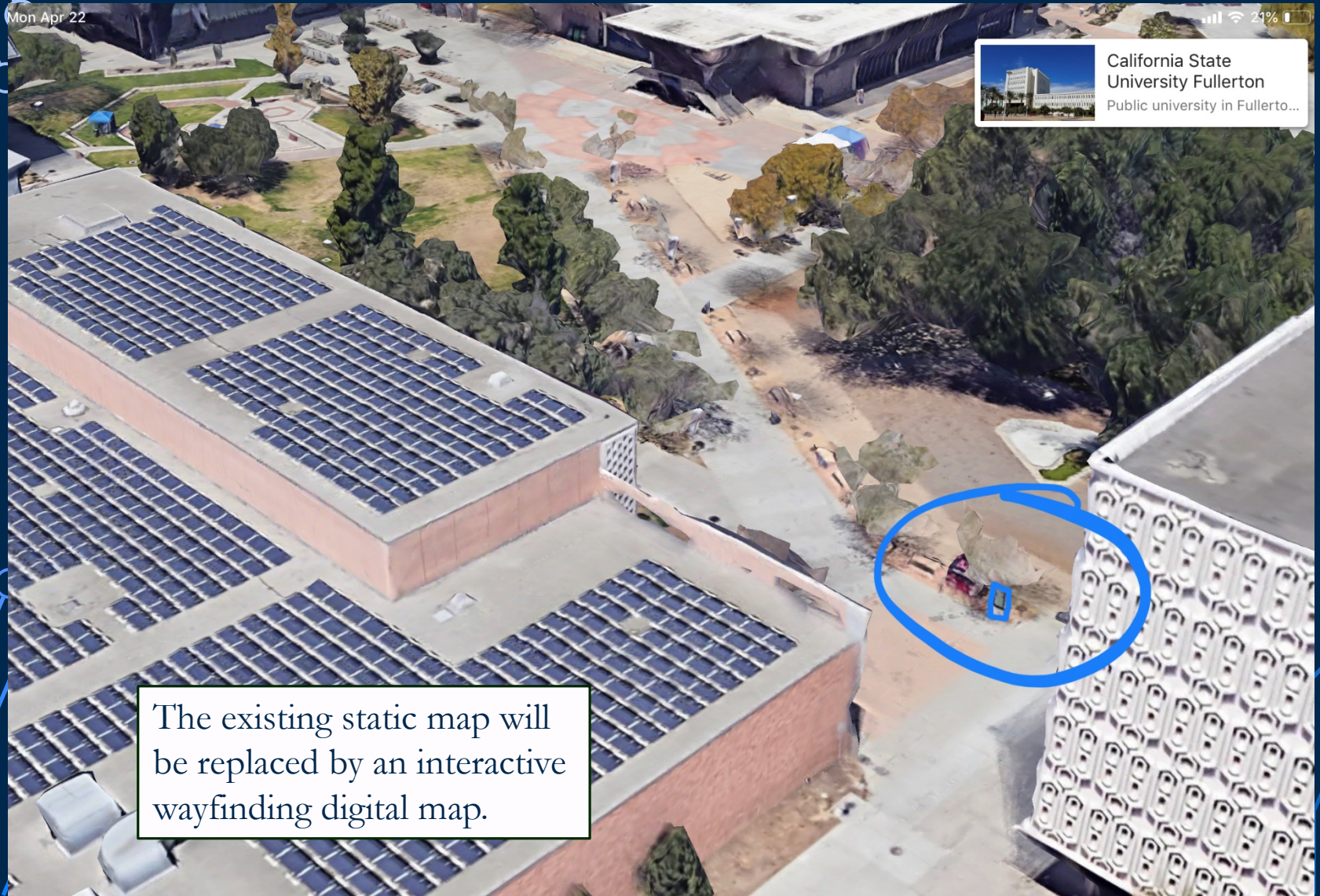
The map will be on the walkway between the Library and McCarthy Hall.



California State University Fullerton
Public university in Fullerton, California

TITAN WALK INTERACTIVE WAYFINDING MAP

Mon Apr 22



California State
University Fullerton
Public university in Fullerto...

The existing static map will be replaced by an interactive wayfinding digital map.

CAMPUS COMMUNICATIONS SCHEDULE

- Cabinet - Done
- Deans - Done
- ASI – Presentation in next 2 weeks
- Senate Exec – Presentation in next 2 weeks

IMPORTANT KEY DATES

- Week of May 1 – IT Annual Survey to Campus
- May 17-19 – Commencement
- May 25 – Disaster Recovery Site Test
- May 31 – Pulse Secure-CSUFVPNS Decommissioning
- Jun 18 – Microsoft SHA-1
- Oct 15 – Password Change Month for All Users /
Extended MFA Deadline
- Dec 31 – Old VCL Decommissioned
- Jan 14 – Windows Server 2008, 2008 R2 & Win7 EOL

SURVEY INSTRUCTIONS

- On your mobile device or laptop's browser, type <http://srs.campuslabs.com> or just scan the QR Code here:
- Enter your First Name, Last Name. You can use “Tuffy Titan” as your first and last name
- Enter the Connect ID (12244)
- Tap/Click on “Connect” button to join the session
- Once a question appears, answer the question and tap/click “Submit.” You may have to scroll down to access “Submit” button



QUESTIONS?



THANK YOU!