

ENROLLMENT AND FTES TARGETS

Enrollment and FTES

- Largest CSU in terms of FTES and Headcount (Fall 2010)
- We provide access to approximately 10,000 new undergraduates annually
 - CA Budget cuts in 2009-10 resulted in not being able to enroll the 2,000 UG transfers who normally would have enrolled in spring 2010
- #1 California Public University destination for California Community College Transfers for 12 consecutive years (CPEC data 1998-99 through 2009-10)
 - When 2010-11 data are available, we anticipated being #1 for a 13th year (CPEC defunding in CA Budget 2011-12 may make pathway dataset unavailable to validate rank versus UC data for 2010-11).

Enrollment and FTES

- All campus efforts during recent budget reductions have focused on maintaining the Academic Year (AY) FTES at recent levels
 - AY 2011-12 will be similar to AY 2010-11 which was similar to AY 2007-08
 - Rational:
 - Preserve and provide student access to courses required to progress to graduation
 - Limited course sections lost resulting from CA budget cuts to the CSU
 - Method:
 - Large portion of cuts taken through reduction in State Funded summer instruction (YRO) by transitioning Summer enrollments to Self-Support
 - Cost to students attending Self-Support Summer held at State Support Tuition levels with no State General Fund support for instruction
 - One-time monies used to support self-support summer instruction

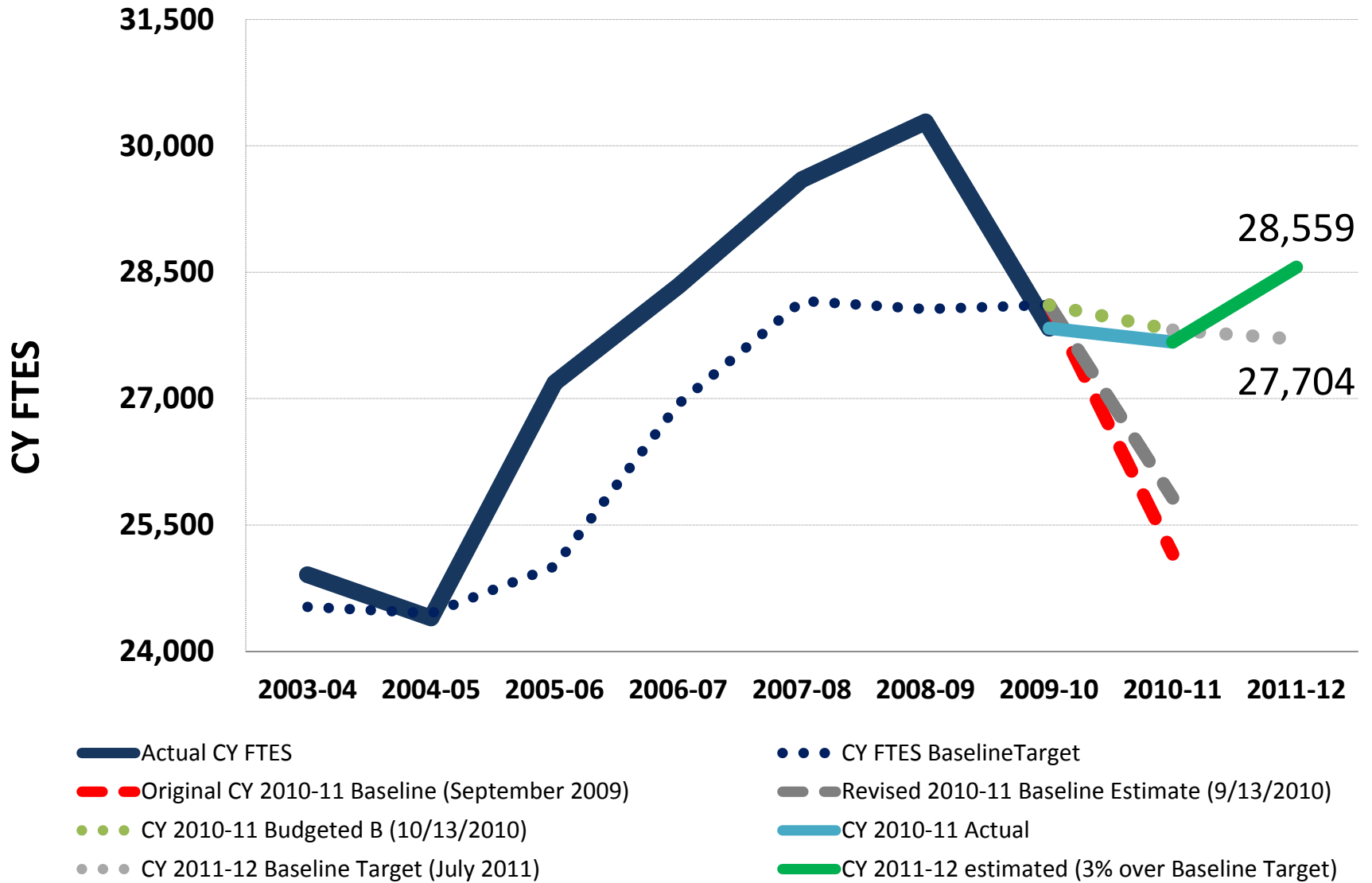
Enrollment and FTES

- All efforts during recent budget reductions have focused on maintaining the AY FTES at recent levels
 - Conversion of State-Support Summer YRO to Self-Support in YRO 2009 saved 993 AY FTES
 - 473 three unit sections spread across the fall 2009 and spring 2010
 - Conversion of State-Support Summer YRO to Self-Support in YRO 2010 saved 955 additional AY FTES
 - 455 three unit sections spread across the fall 2010 and spring 2011

Enrollment and FTES

- The inability to enroll 2,000 new UG transfers in spring 2010 due to CA Budget Cuts amplified UG transfer enrollment demand in fall 2010
 - Resulted in need to severely impact fall 2010 admission of non-local admissions area UG transfers to control enrollments to budgeted targets
 - Resulted in revamping of impactation for fall 2011 and beyond to include program level impactation for local admissions area students
- Caps of 15 units for students resulting from the CA budget cuts also reduced FTES fall 2009, spring 2010, and fall 2010.
 - Cap was waived for graduating seniors and high unit majors
 - The CA Budget signed on October 13th allowed the cap to be removed for spring 2011

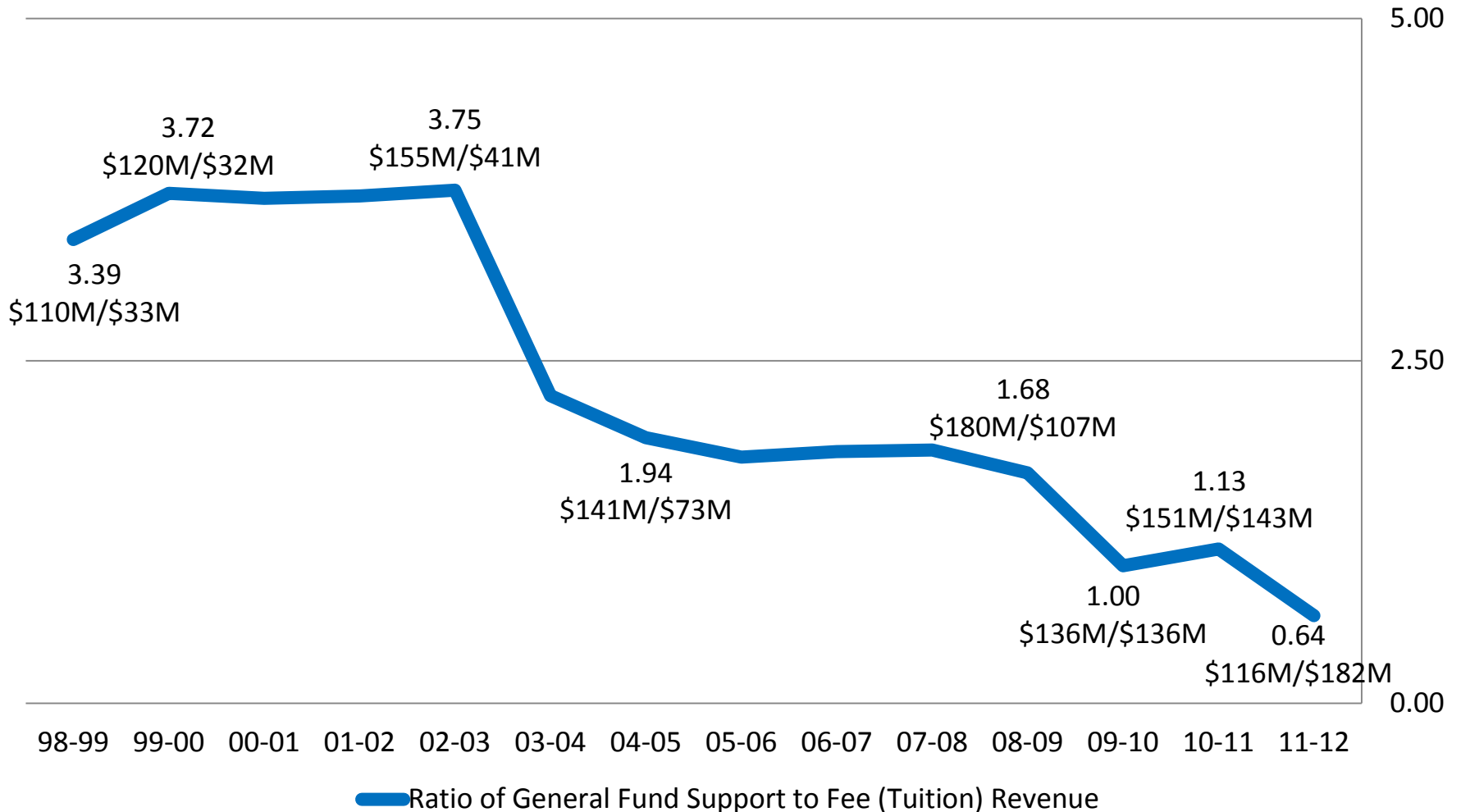
College Year FTES (Actual vs. Target)



CSU Budget Allocations for CSU Fullerton

General Fund Support to State University Fee (Tuition) Revenue Ratio

(source: <http://www.calstate.edu/budget/fybudget/coded-memos/>)



FTES History

	YRO	Fall	Spring	CY Actual	CY Target(s)
2005-06	3,346	25,975	25,054	27,187	25,010
2006-07	3,496	27,025	26,149	28,335	26,935
2007-08	3,967	28,132	27,100	29,600	28,161
2008-09	4,076	28,362	28,131	30,285	28,062
2009-10*	2,090	27,965	25,615	27,835	28,110
2010-11*	180	27,479	27,683	27,671	25,156 <i>(September 2009)</i>
					25,821 <i>(9/13/10)</i>
					26,509 <i>(9/27/10)</i>
					27,069 <i>(10/13/10 -A)</i>
					27,814 <i>(10/13/10 -B)</i>
2011-12*	193	28,428	28,496	28,559	27,704 <i>(July 2011)</i>

* The campus was required to reduce enrollment to budgeted target beginning in 2009-10. Campus reduced YRO to minimize impacts during the Academic Year. Self-Support summer instruction was made available for matriculated students and generated 92.2 FTES in summer 2009; 2,878.8 FTES in summer 2010; 2,947 FTES in summer 2011 (in addition to state support YRO figures above).

Headcount History

	YRO	Fall	Spring
2005-06	9,151	35,040	33,734
2006-07	9,402	35,921	34,927
2007-08	10,366	37,130	36,018
2008-09	10,482	36,996	37,765
2009-10*	6,247	36,262	32,611
2010-11**	405	35,590	34,912
2011-12**	457	36,507	35,552

*The campus was required to reduce enrollment to budgeted target beginning in 2009-10. Campus reduced YRO to minimize impacts during the Academic Year. Self-Support summer instruction was made available for 319 matriculated students in summer 2009 ; 7,706 matriculated students in summer 2010; 7,645 matriculated students in summer 2011 (in addition to state support YRO figures above).

** Target revisions October 2010 resulted in opportunities for spring 2011 transfers (very limited transfers in spring 2010)

**The campus is now fully impacted (all majors) at the undergraduate level.

New Undergraduates

	Fall		Spring	
	FTF	UGT	FTF	UGT
2005-06	3,943	3,659	30	1,905
2006-07	3,851	3,895	18	1,998
2007-08	4,154	4,008	22	2,019
2008-09	4,697	3,082	11	2,681
2009-10*	4,065	3,800	8	33
2010-11**	3,912	4,165	5	2,124
<i>2011-12***</i>	<i>4,200</i>	<i>3,600</i>	<i>5</i>	<i>1,400</i>

*The campus was required to reduce enrollment to budgeted target beginning in 2009-10 (very limited transfers in spring 2010).

** Target revisions October 2010 resulted in opportunities for spring 2011 transfers.

***The campus is now fully impacted (all majors) at the undergraduate level.

We have been the # 1 destination for California Community College transfers among all California public universities for twelve consecutive years

	98-99	99-00	00-01	01-02	02-03	03-04	04-05	05-06	06-07	07-08	08-09	09-10	10-11
CSU FULLERTON	4,126	4,318	4,436	4,761	4,877	4,280	6,094	5,113	5,412	5,495	5,351	3,521	5,975
CSU LONG BEACH	3,264	3,789	3,438	4,079	4,156	3,479	4,047	3,529	4,373	4,272	3,027	1,907	3,959
CSU NORTHRIDGE	3,388	3,915	4,299	4,562	4,312	3,991	4,360	4,750	4,820	4,861	4,524	3,437	4,677
CSU SACRAMENTO	3,664	3,929	3,970	4,074	3,841	3,771	4,398	3,986	4,249	4,109	4,172	3,249	4,788
SAN DIEGO STATE	3,746	3,666	4,150	3,565	3,414	3,347	3,360	4,648	4,324	4,382	2,854	2,408	4,688
SAN FRANCISCO STATE	3,508	3,498	3,212	3,289	3,786	3,979	4,040	3,901	4,103	3,906	3,721	2,868	4,493
SAN JOSE STATE	3,681	3,555	3,243	3,409	3,506	3,225	3,212	3,525	3,618	4,000	3,563	1,939	3,626
UC BERKELEY	1,653	1,682	1,548	1,745	1,851	1,767	1,870	2,024	2,018	2,080	2,097	2,274	Not Available
UC LOS ANGELES	2,054	2,430	2,488	2,780	2,555	2,965	2,847	2,951	3,065	3,048	2,967	2,934	
UC SAN DIEGO	1,108	1,253	1,333	1,445	1,690	1,767	1,645	1,760	1,797	1,979	2,226	2,359	

Source: CPEC Transfer Pathways <http://www.cpec.ca.gov/OnLineData/TransferPathway.asp>

2010-11 data available from CSU sources. UC data not currently available.

OPENING DAY

2011 Fall Opening Day Enrollment

(08/22/2011 -- Start of Day)

- 4,174 First time Freshmen
- 3,650 New and returning transfer students
- 1,957 New and returning graduate and second BA students
- 25,820 Continuing students (UG and Grad/PB)

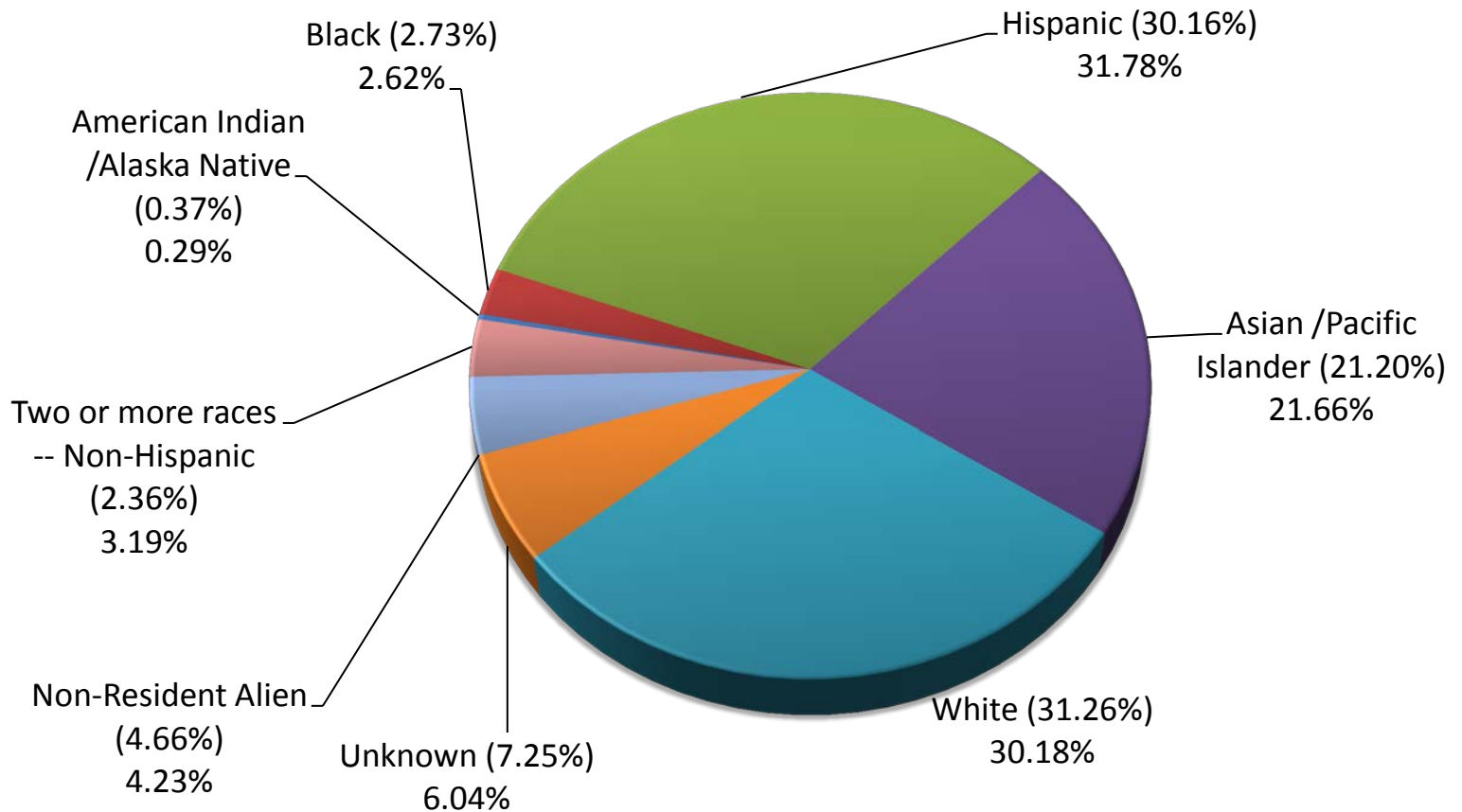
- 35,684 Students on opening day
- 28,553 FTES on opening day

**** 2,784** *Enrolled at Irvine campus*

**** 1,043** *International Students*

Fall 2011 Ethnic Distribution

(Start of First day of classes 8/22/2011)

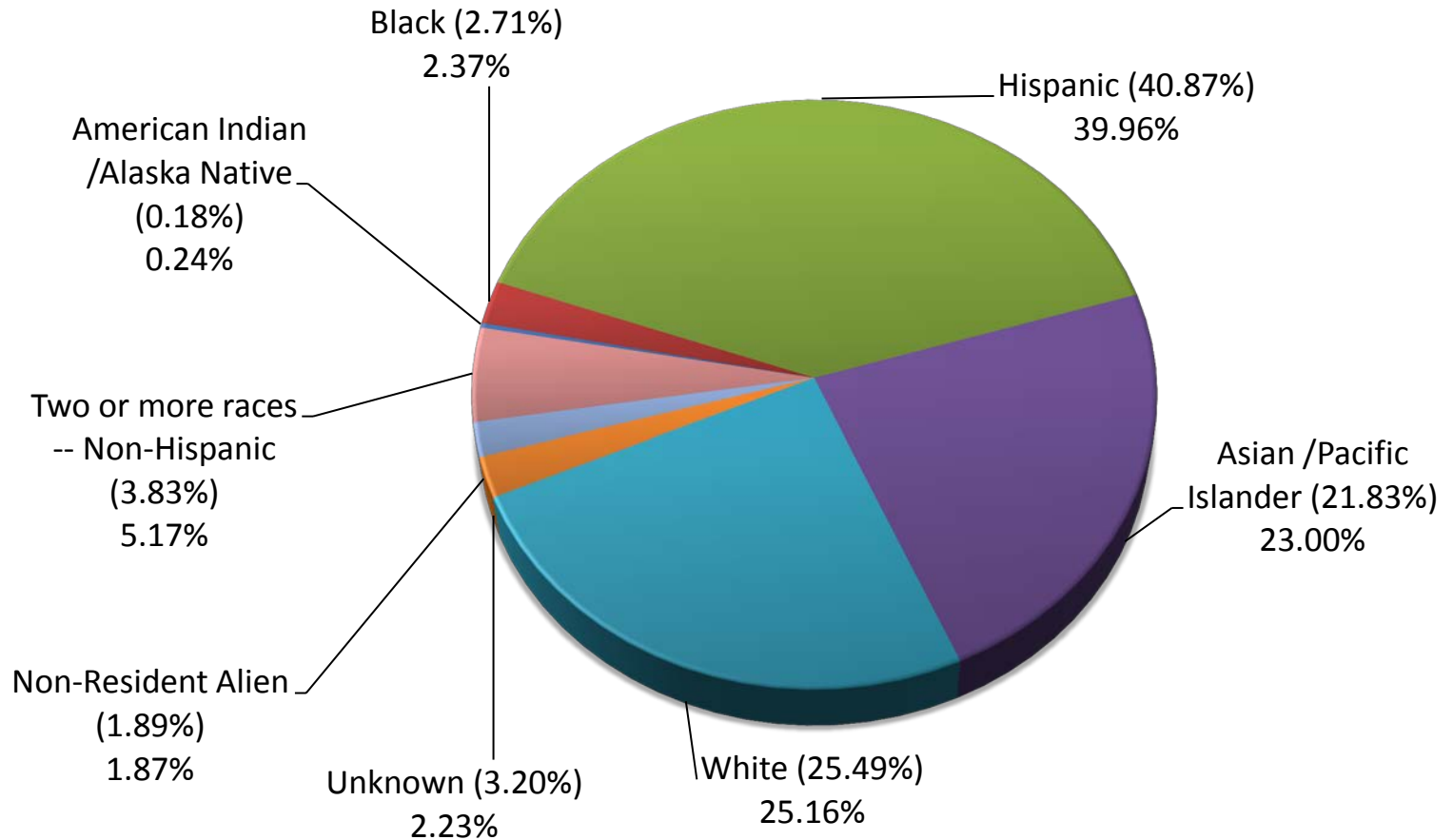


Beginning in Fall 2009 applicants were able to identify themselves as multi-racial. 221 of the 1138 Fall 2011 students reporting two or more races reported Black plus another race (0.6% of the university total).

Fall 2010 data are shown in parentheses

Fall 2011 FTF Ethnic Distribution

(Start of First day of classes 8/22/2011)



Beginning in Fall 2009 applicants were able to identify themselves as multi-racial. 49 of the 216 Fall 2011 students reporting two or more races reported Black plus another race (1.2% of the first-time freshman total).

Fall 2010 data are shown in parentheses

FTF High School Statistics

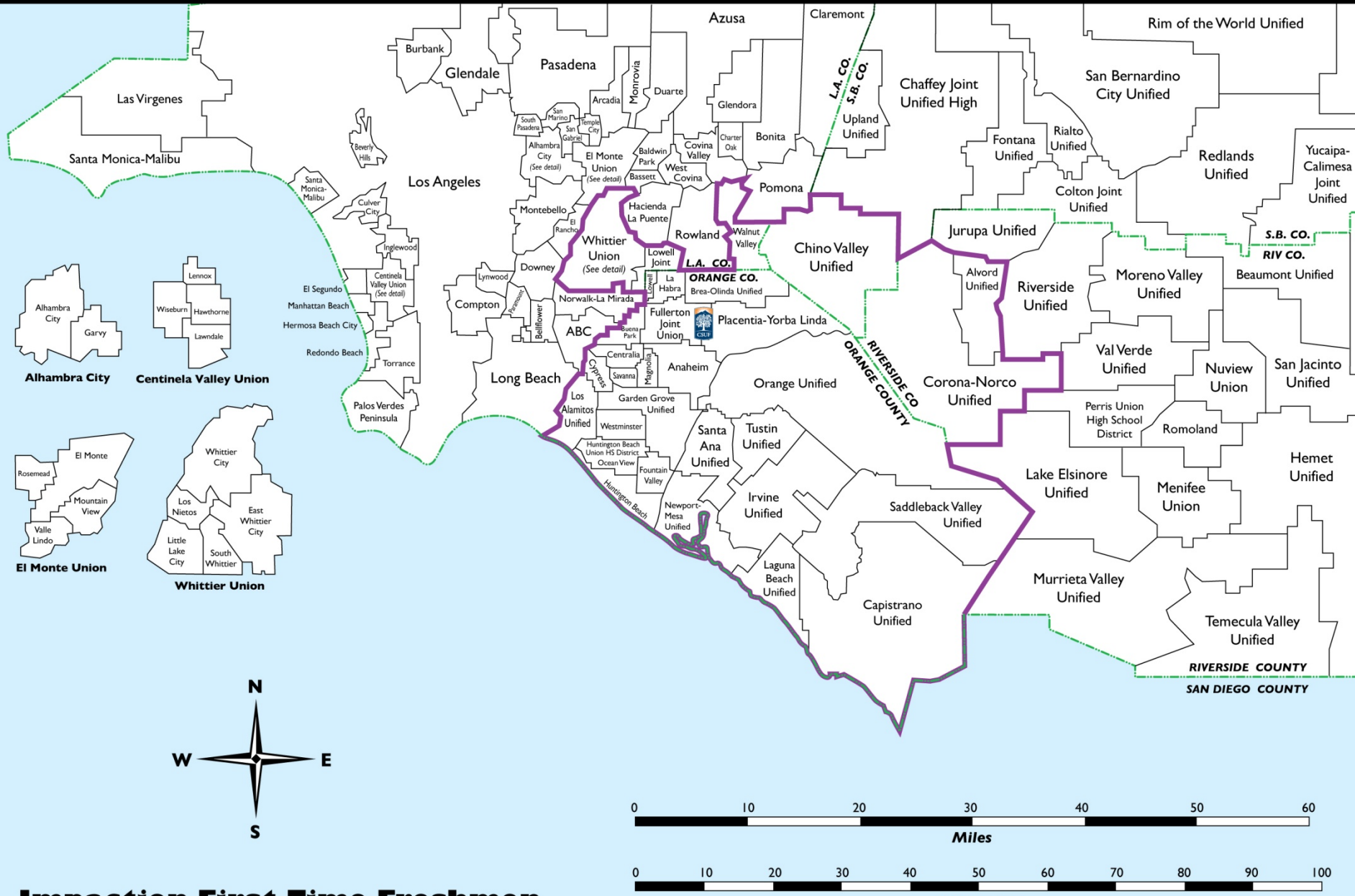
Fall 2011 (preliminary – opening day)

Impaction Zone	Headcount	HS GPA	SAT VERB	SAT MATH	SAT TOTAL	Eligibility Index
Local Area	2,392 (2,727)	3.30 (3.19)	500 (485)	520 (506)	1020 (991)	3657 (3540)
Outside Local Area	1,782 (1,185)	3.48 (3.47)	504 (505)	518 (523)	1022 (1028)	3803 (3808)
All First-Time Freshmen	4,174 (3,912)	3.37 (3.27)	501 (491)	519 (511)	1021 (1002)	3719 (3620)

Fall 2010 data are shown in parentheses

IMPACTION COMPARISONS

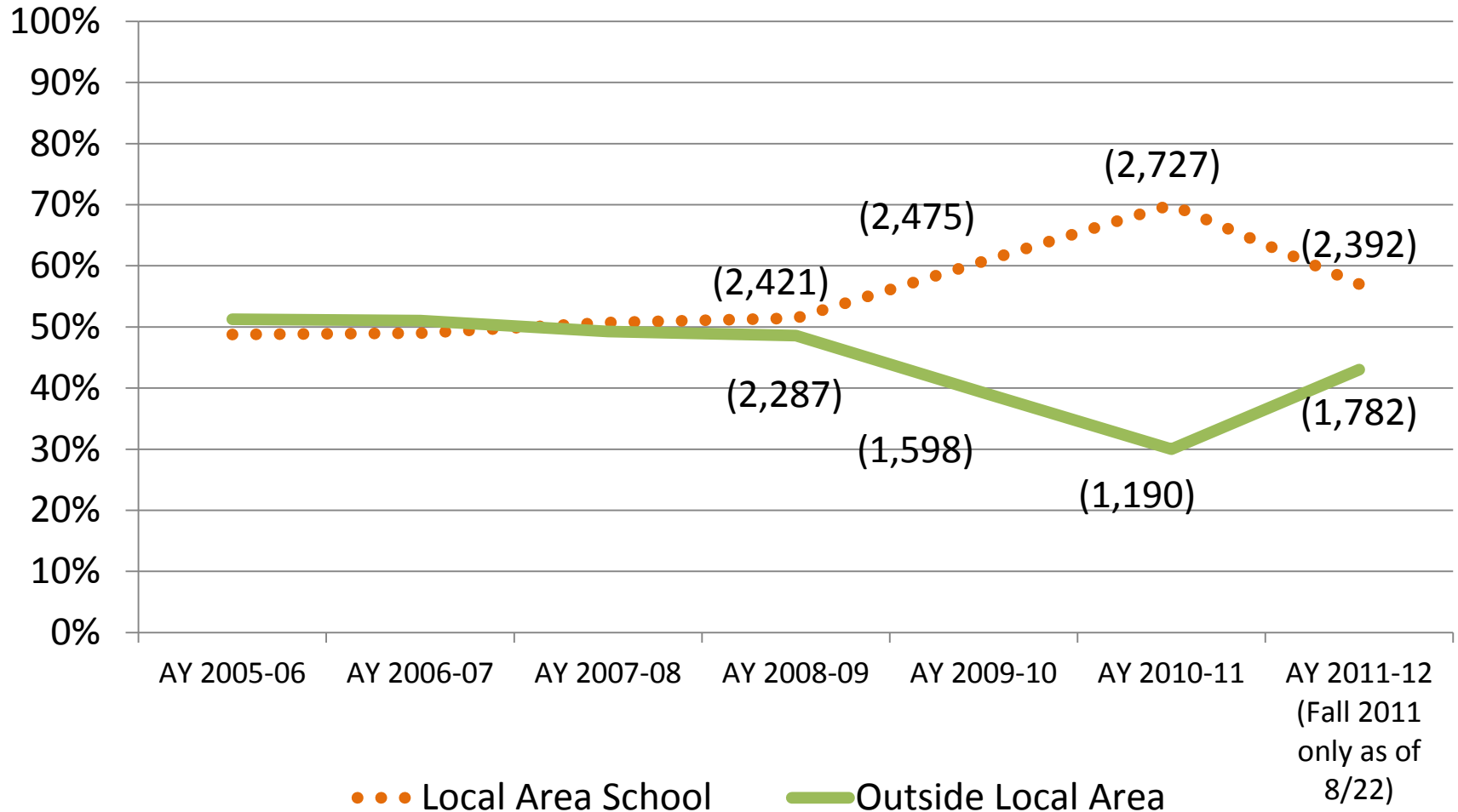
(FA11 DATA AS OF 8/27/11)



Impaction First-Time Freshmen

Effect of Impaction

First-time Freshmen

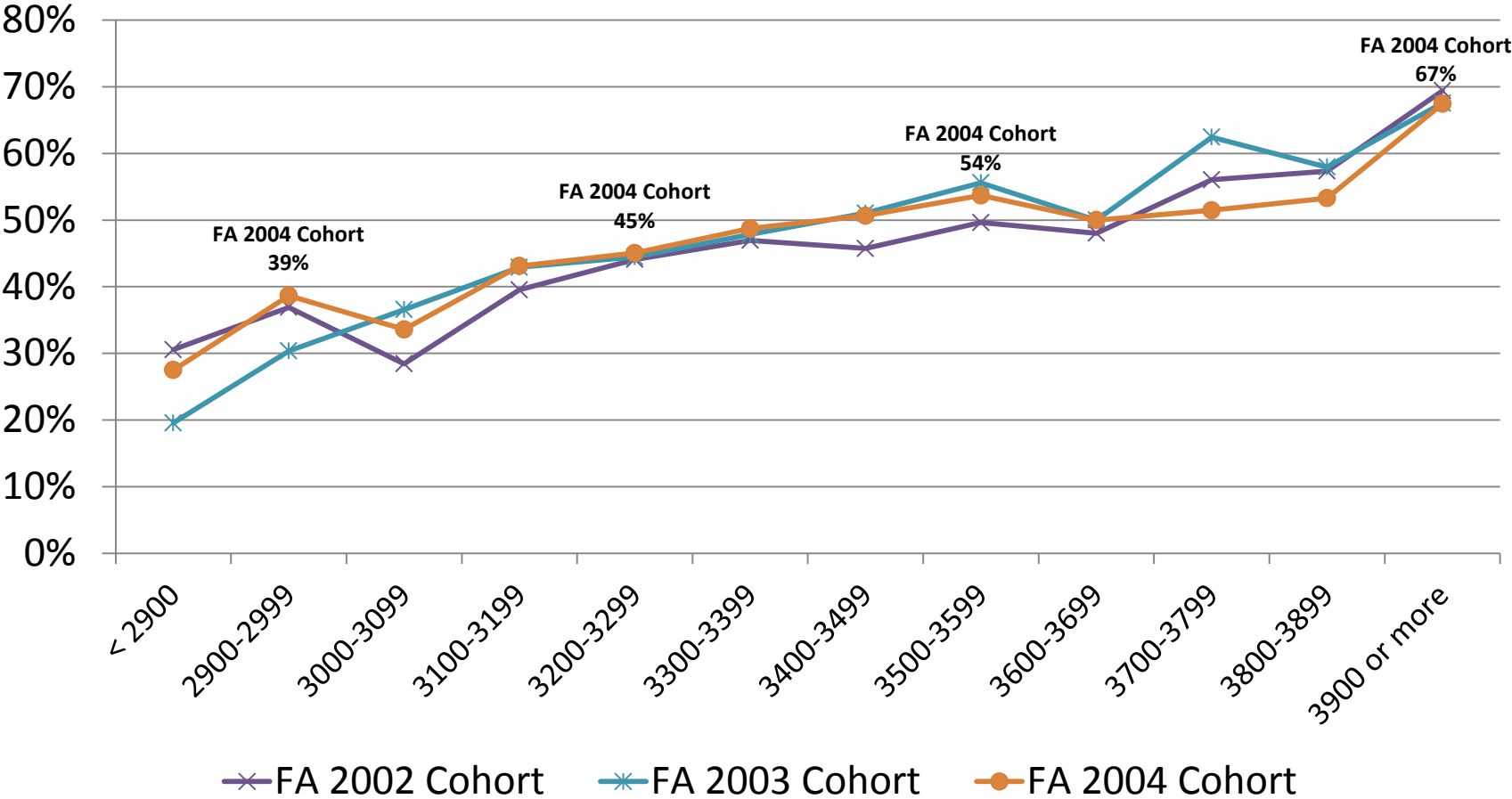


Freshman Impaction

	FA 10	FA 11
Admissions Standard (Local/non-Local)	EI \geq 2900/3600	EI \geq 3200/3500
% Local	70%	57%
Mean HS GPA (Local/non-Local)	3.19/3.47	3.29/3.47
Mean SAT (Local/non-Local)	991/1028	1020/1022
Black	2.7%	2.4%
Hispanic	40.9%	39.8%
Asian/PI	21.8%	22.9%
White	25.5%	25.0%
Unknown	3.2%	2.3%
International	1.9%	2.4%
Multiple Race	3.8%	5.2%

First-time Full-time Freshman Six-Year Graduation Rate by Eligibility Index Range

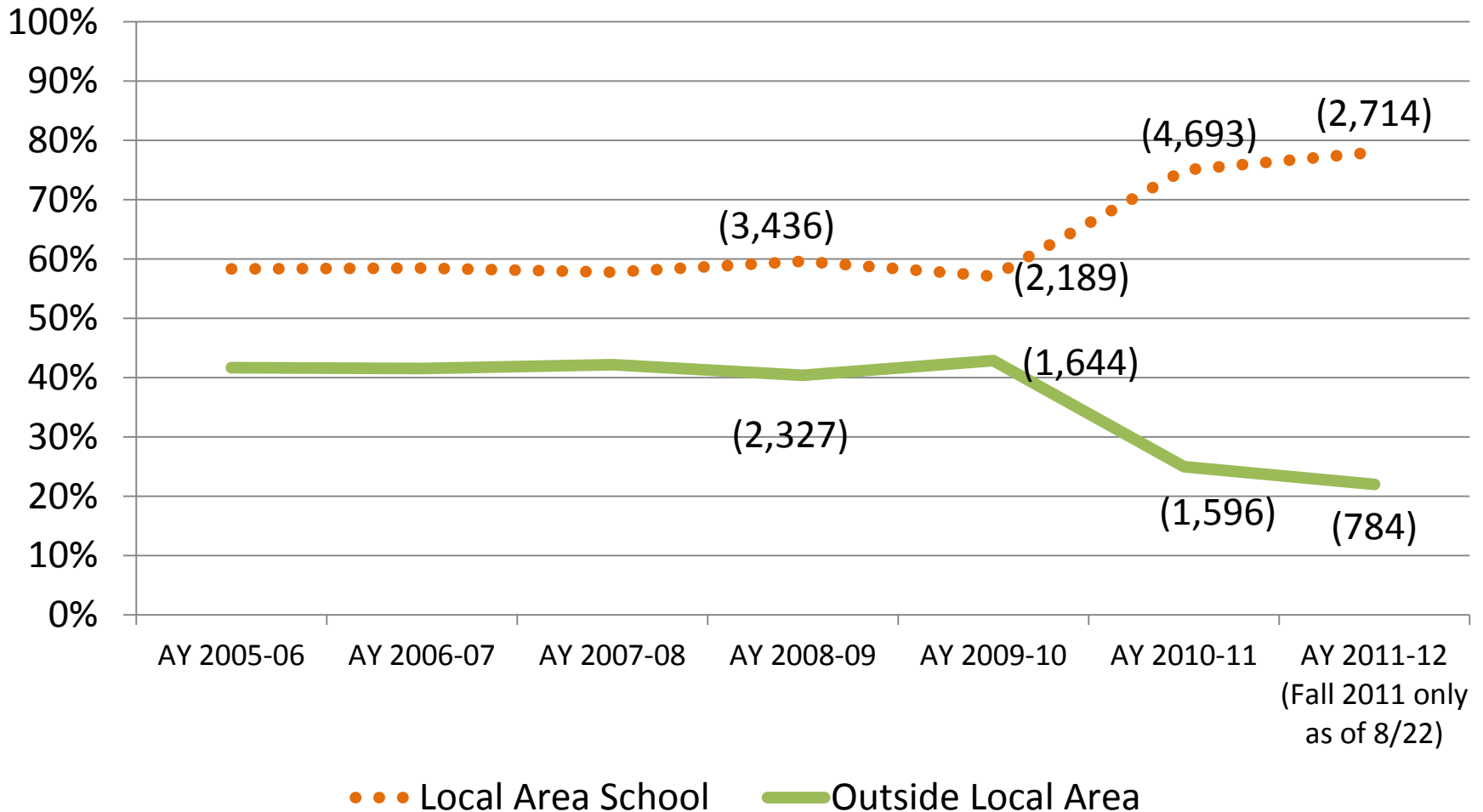
(three cohort average rate = 51%)





Effect of Impaction

New Undergraduate Transfers

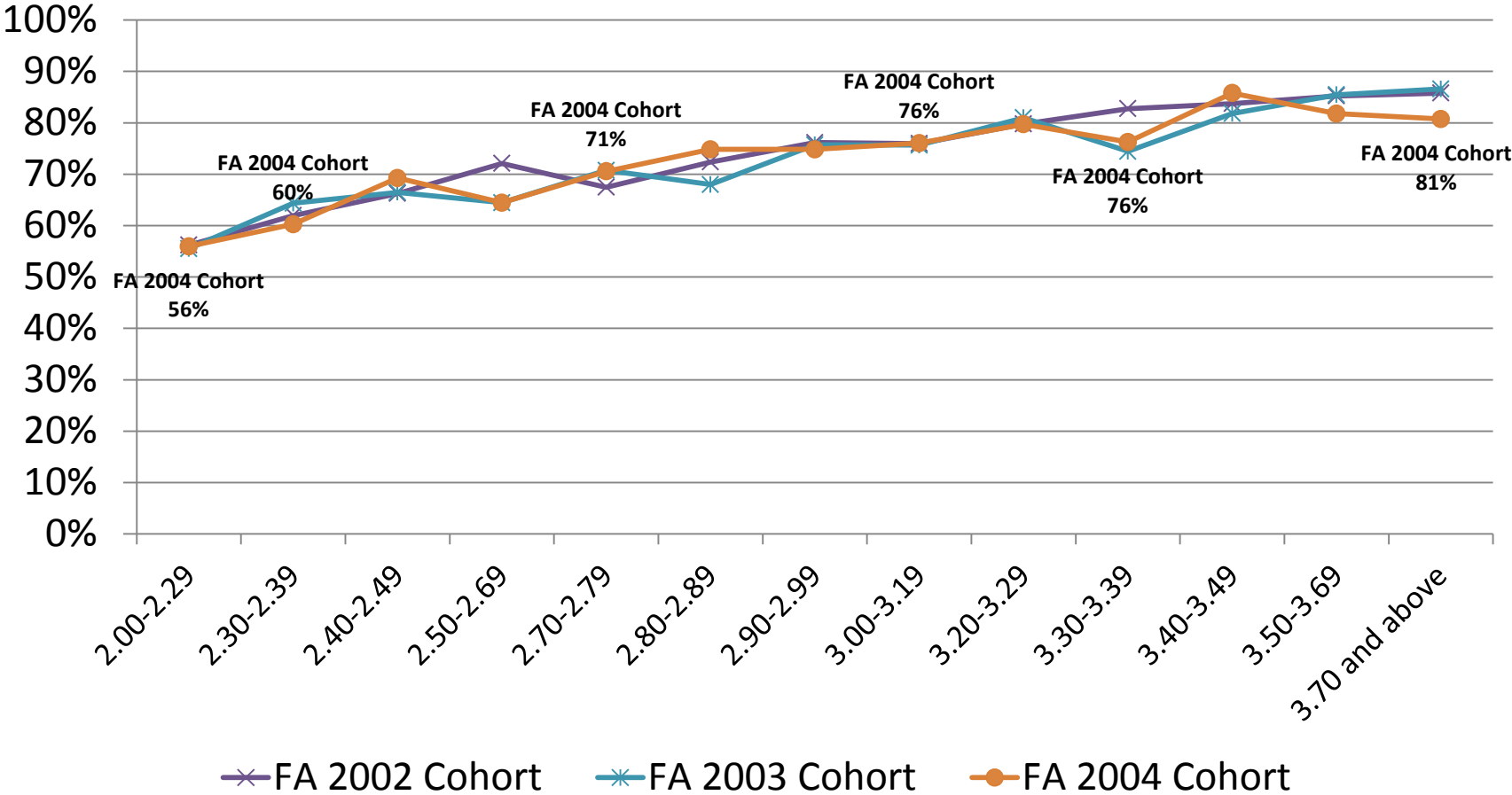


UG Transfer Impaction

	FA 10	FA 11
Admissions Standard (Local/non-Local)	TranGPA \geq 2.00/3.70	TranGPA \geq 2.30/3.30
% Local	90%	78%
Mean Transfer GPA (Local/non-Local)	2.98/3.47	3.03/3.37
Black	1.6%	1.9%
Hispanic	26.4%	29.0%
Asian/PI	19.7%	19.9%
White	35.1%	33.4%
Unknown	7.9%	5.5%
International	5.9%	6.2%
Multiple Race	3.3%	3.6%

New UG Transfer Six-Year Graduation Rate by Transfer GPA at Entry Range

(three cohort average rate = 72%)



GRADUATION RATES/DEGREES AWARDED

6-Year Graduation Rate Comparison

Fall 2004 First-time Full-time Freshmen

	Cohort Size	Average SAT	Graduated in 6 yrs or less	Not graduated, Enrolled Fall Yr 7	CSU Eventual Graduation Rate
San Diego	3,527	1103	66.2%	2.8%	69.0%
Long Beach	3,300	1013	54.0%	11.6%	65.6%
Systemwide	39,085	1016	52.4%	7.5%	59.9%
Fullerton	3,539	991	51.4%	8.2%	59.6%
San Jose	2,276	1003	48.0%	10.6%	58.6%
San Francisco	2,739	1007	48.0%	8.3%	56.3%
Northridge	2,871	942	47.9%	8.6%	56.5%
Sacramento	2,268	963	42.0%	11.5%	53.5%

Degrees Awarded 2010-11

Bachelor's Degrees Awarded	Master's Degrees Awarded	EDD Degrees Awarded	Total Degrees Awarded
6,875	1,562	11	8,448

One of five “Low net-price institutions with a graduation rate of at least 50 percent and at least 30 percent Pell enrollment” based on data from The Education Trust. *Priced Out: How the Wrong Financial-Aid Policies Hurt Low-Income Students* (June 2011)

Ninth in the nation in terms of baccalaureate degrees awarded to minority students based on data from the U.S. Department of Education. *Diverse Issues in Higher Education* (June 2011)

No. 1 in California and fifth in the nation among top colleges and universities awarding bachelor's degrees to Hispanics based on data from the U.S. Department of Education. *Hispanic Outlook in Higher Education* (May 2011)