

# Profile of Transfers to CSU Fullerton

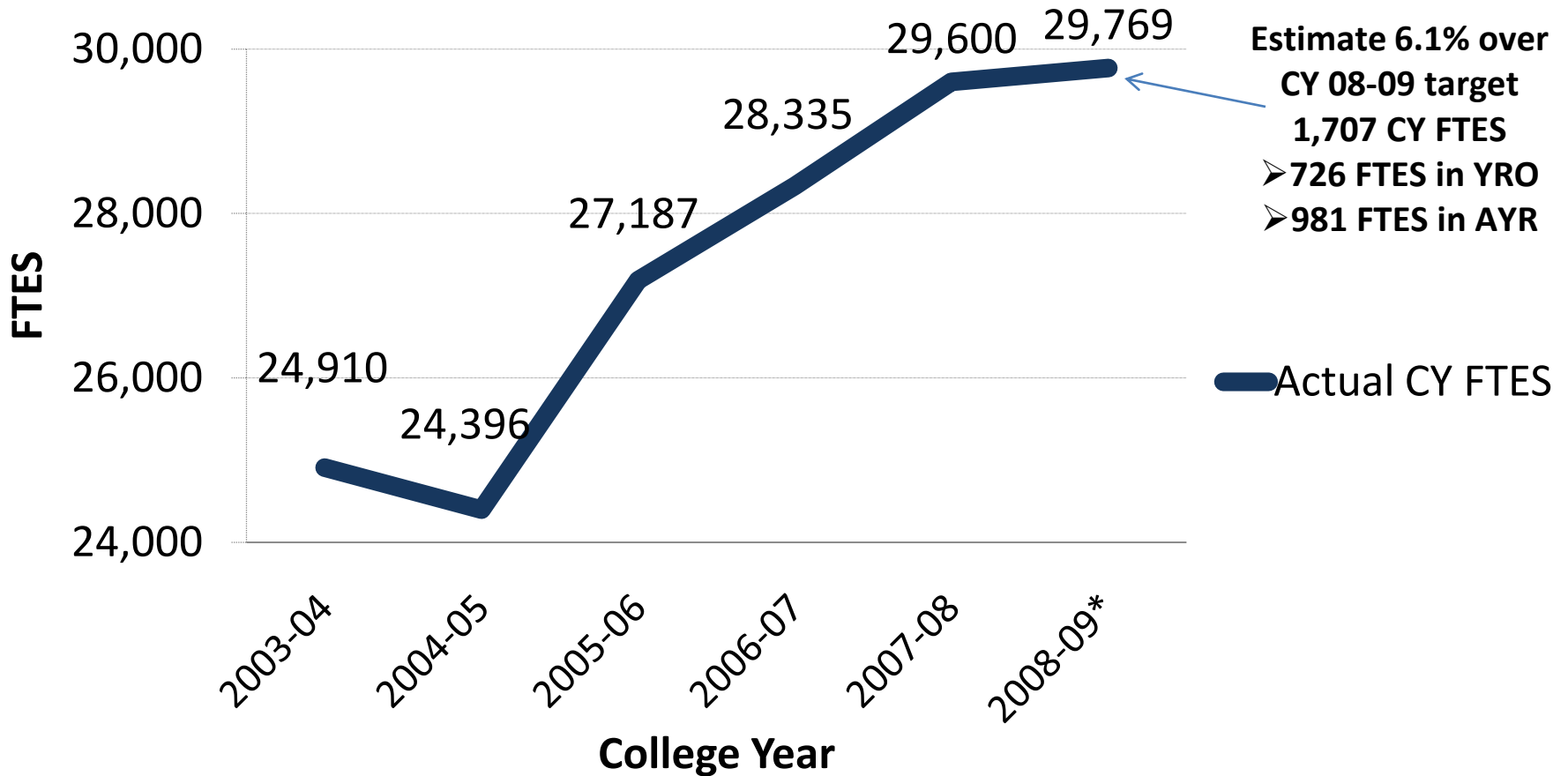
Presentation at 5<sup>th</sup> Annual TEPAC Conference  
October 21, 2008

Edward Sullivan  
Acting Assistant Vice President  
Institutional Research and Analytical Studies  
[esullivan@fullerton.edu](mailto:esullivan@fullerton.edu)  
October 21, 2008

# **COLLEGE YEAR ENROLLMENTS**

# College Year FTES Comparisons

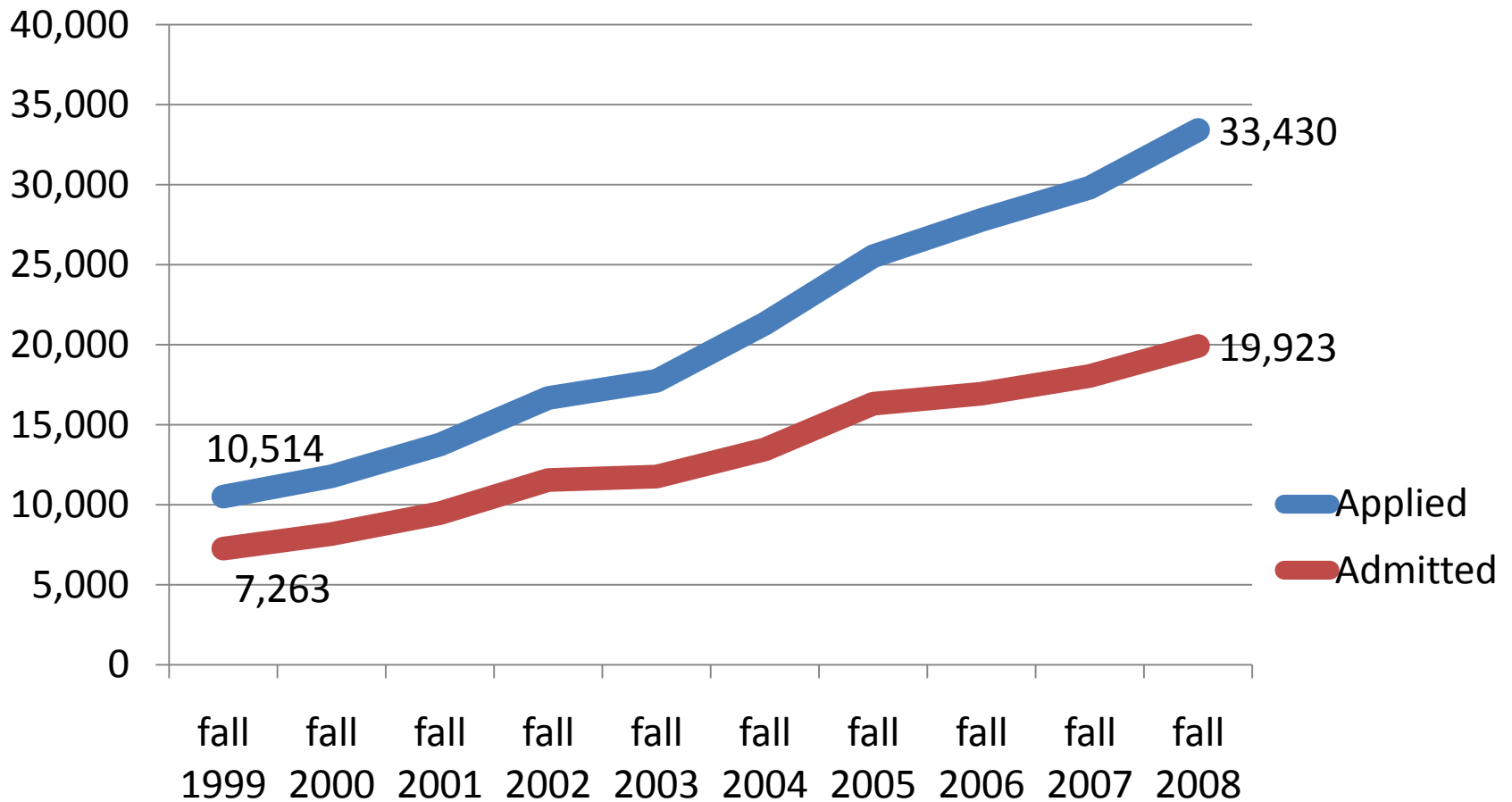
CY 2003-04, CY 2004-05, CY 2005-06 FTES totals do not include the graduate student FTES differential  
 CY 2006-07, CY 2007-08, CY 2008-09 FTES totals include the graduate student FTES differential



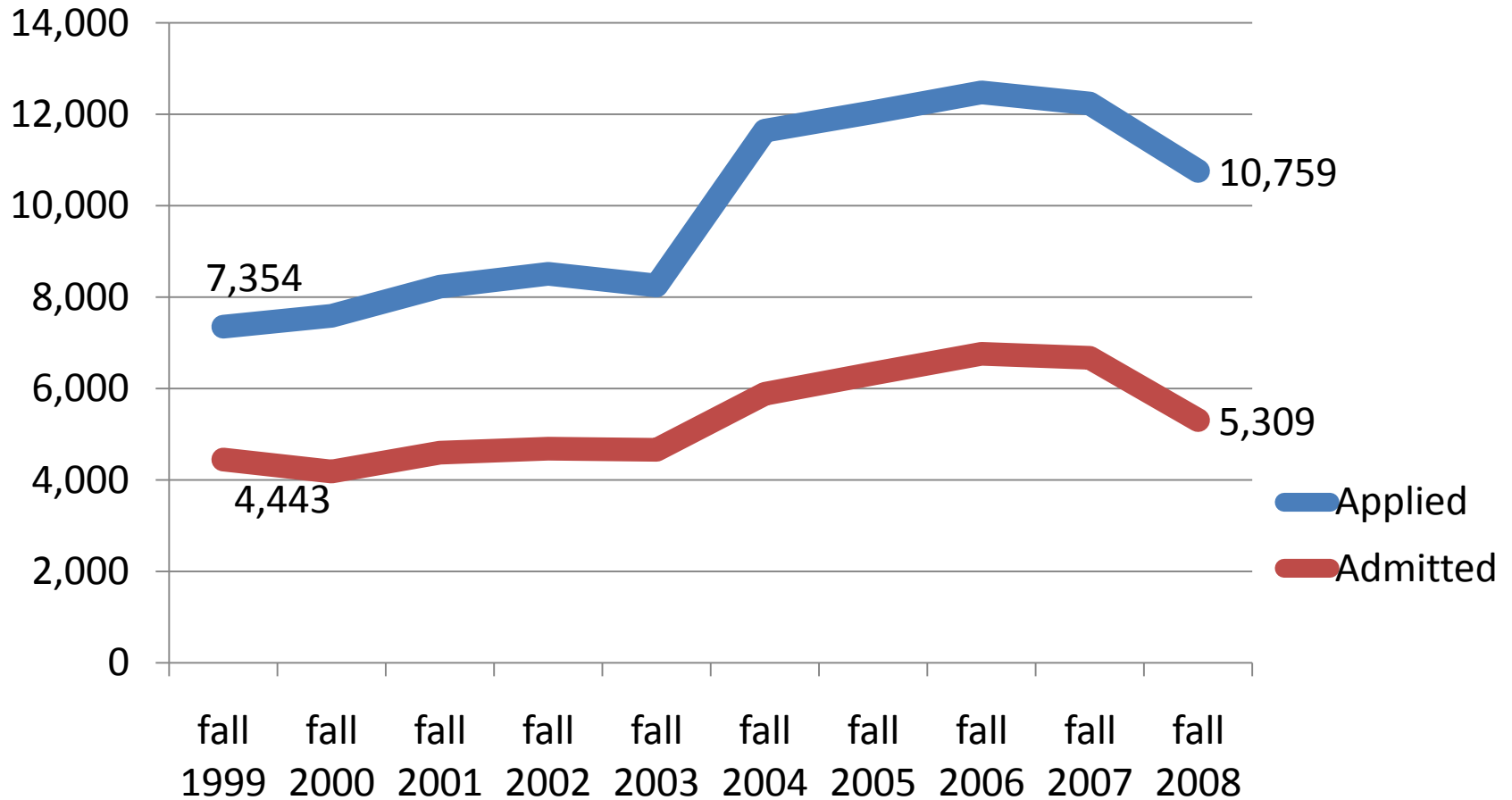
Effective 2006-07, the California State Legislature approved inclusion of a graduate student differential in CSU report FTES totals. Masters and EDD student FTES is computed as Units Attempted/12. For all other student FTES is computed as units attempted/15. Prior to CY2006-07, FTES was computed for all students as 1 FTES = 15 units attempted.

**FALL 2008**

# Trends in Freshman Applications and Admits



# Trends in Undergraduate Transfer Applications and Admits



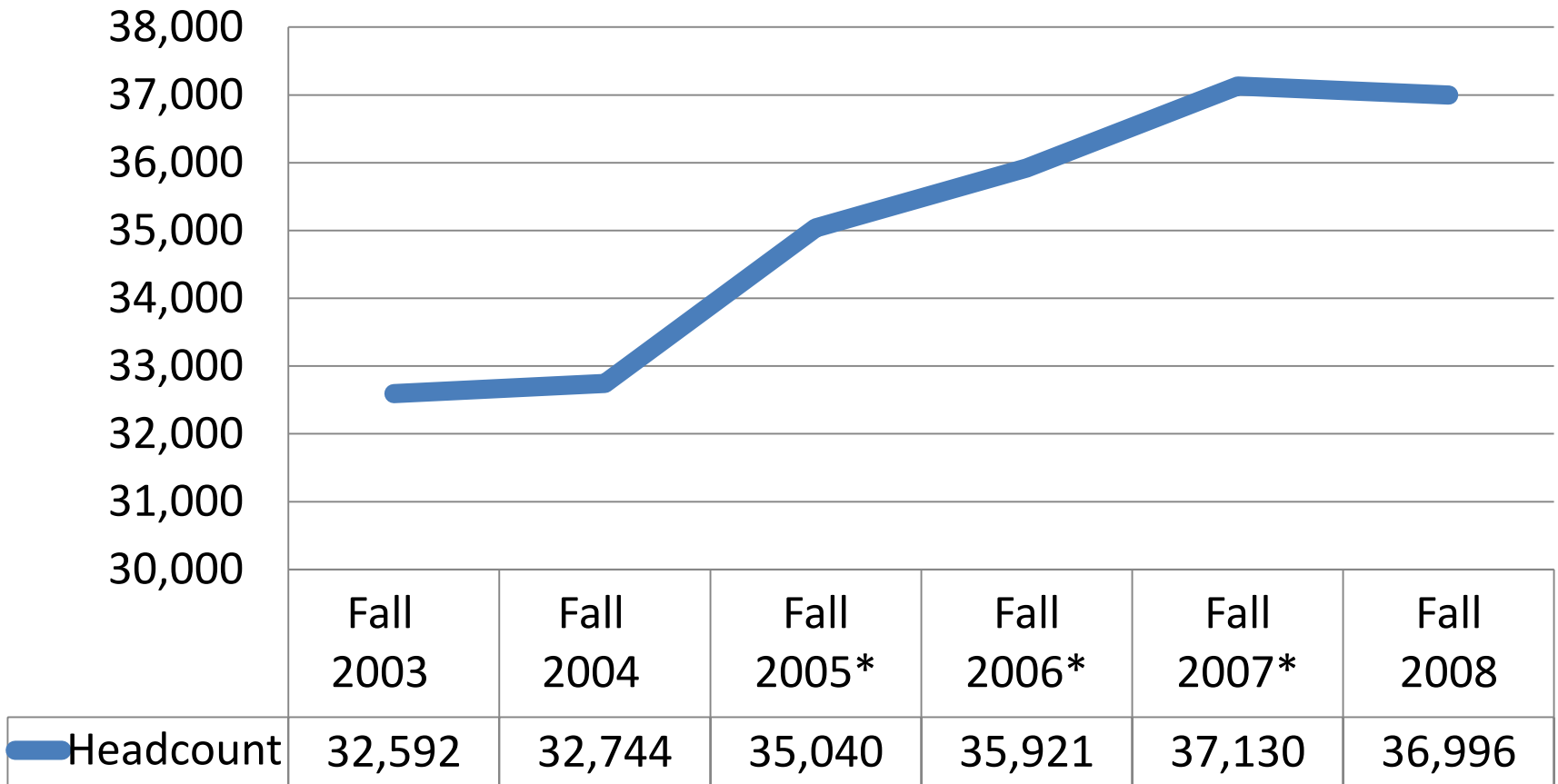
# New Student Estimate to Actual Comparisons

## Key Categories

As of Fall 2008 Census

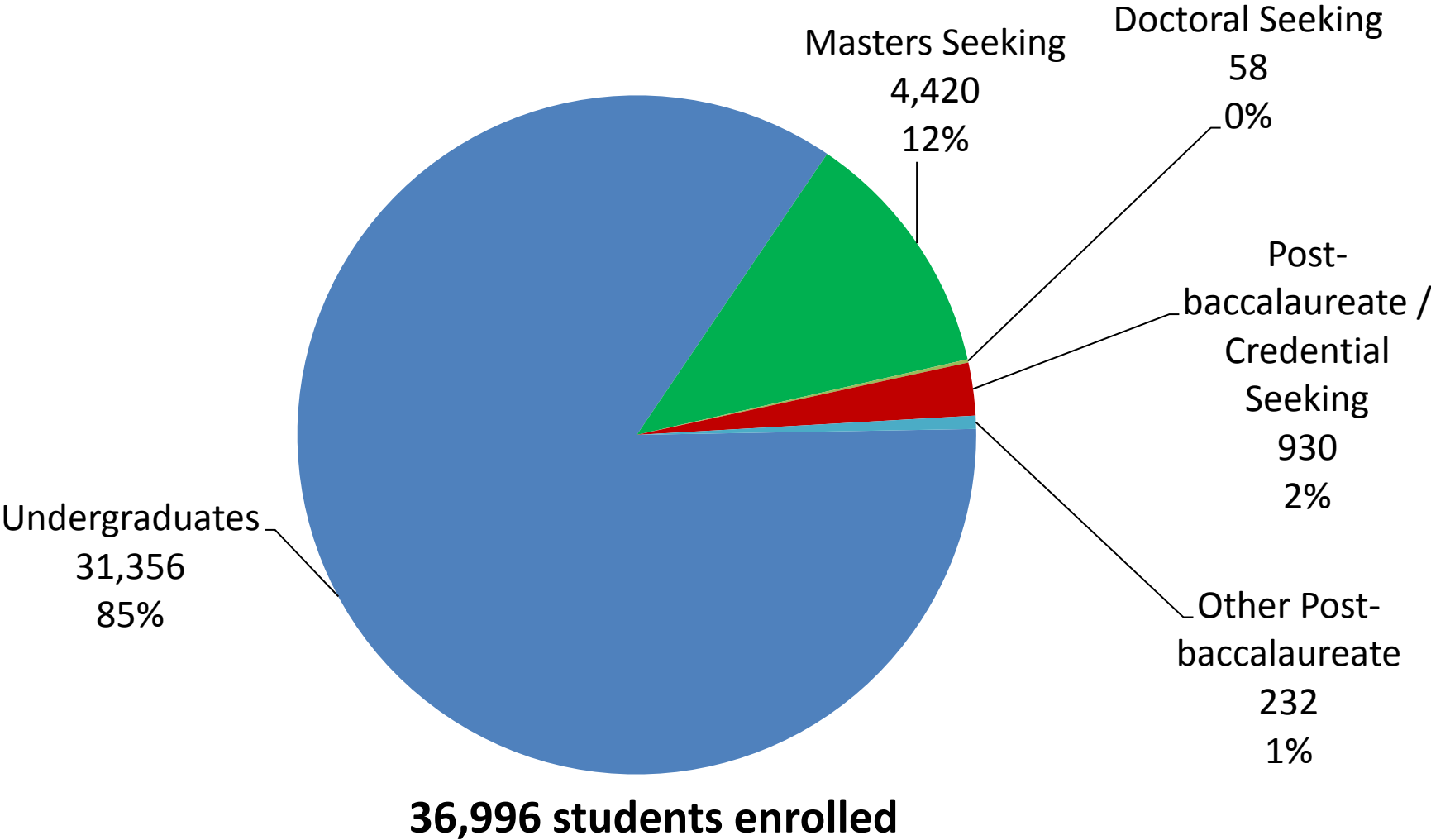
Category	Projected		Registered		Difference	
	2007	2008	2007	2008	2007	2008
<b>First-Time Freshmen</b>	3,900	<b>4,100</b>	4,154	<b>4,697</b>	254	<b>597</b>
<b>Undergraduate Transfers</b>	3,900	<b>3,900</b>	4,008	<b>3,082</b>	108	<b>-818</b>
<b>New Masters Seeking</b>	1,500	<b>1,437</b>	1,451	<b>1,465</b>	-49	<b>28</b>
<b>Credentials only</b>	550	<b>400</b>	405	<b>418</b>	-145	<b>18</b>
<b>Key Categories Totals</b>	9,850	<b>9,837</b>	10,018	<b>9,662</b>	168	<b>-175</b>

# Fall Headcount Comparisons



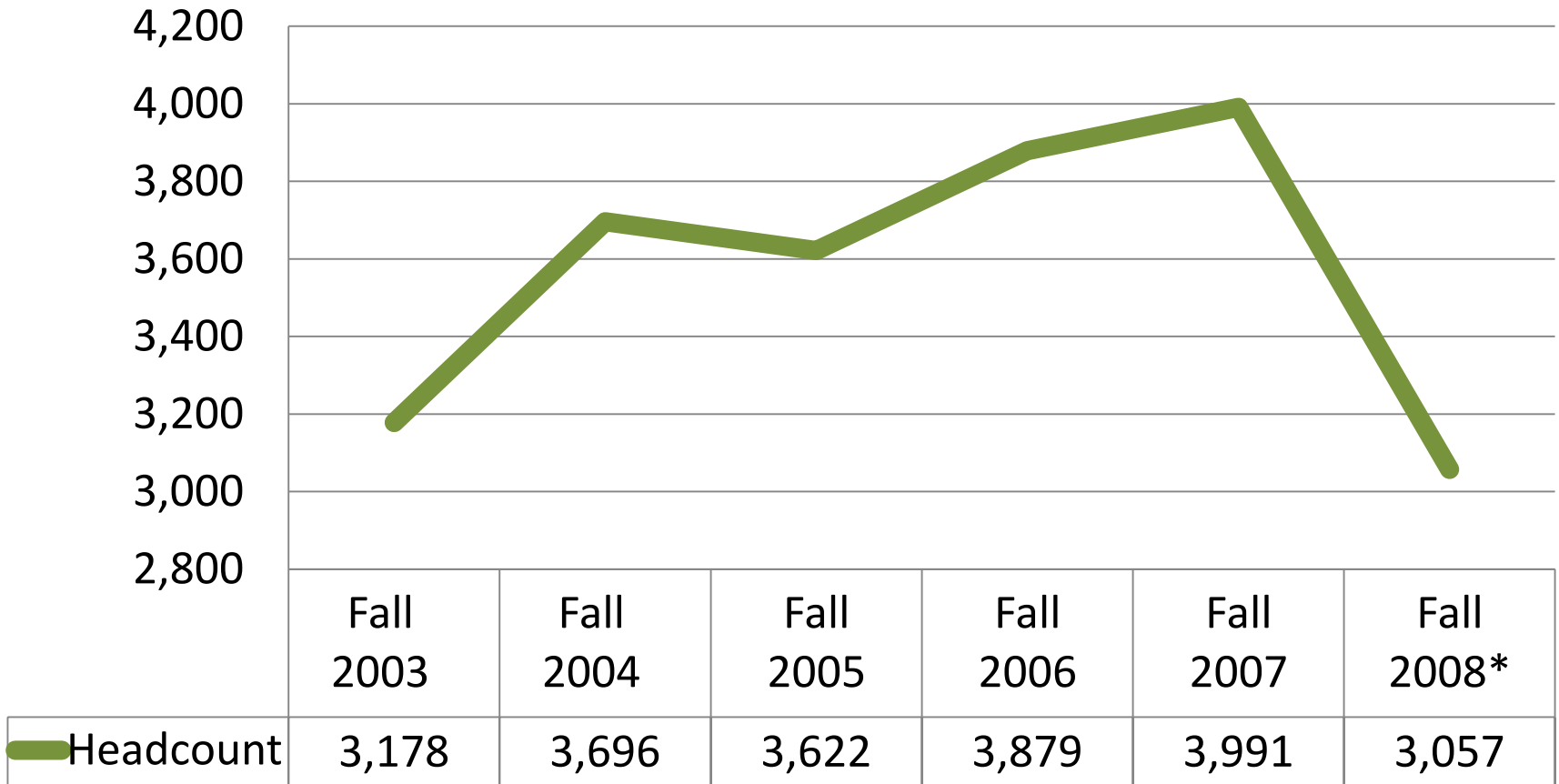
\*We had the largest headcount enrollment of all CSUs in Fall 2005, 2006, 2007

# Fall 2008 Student Body Composition



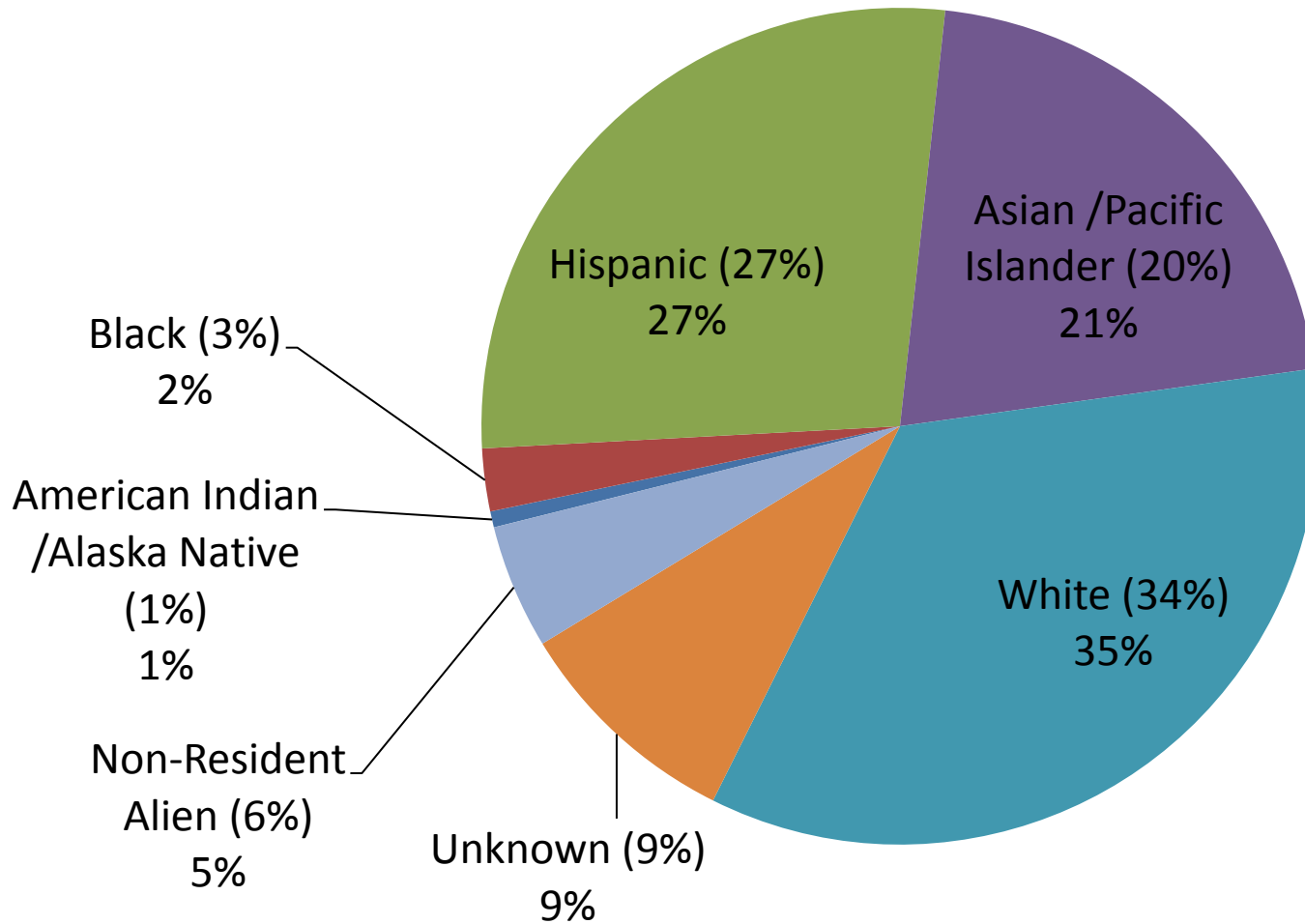
**FALL 2008**  
**NEW UPPER DIVISION TRANSFERS**

# New Upper Division Transfer Headcount Comparisons



\* Due to budget crisis, transfer applications were closed in mid-February 2008 creating a shorter application period for new upper division transfers than previous years

# Fall 2008 New Upper Division Transfer Ethnic Distribution



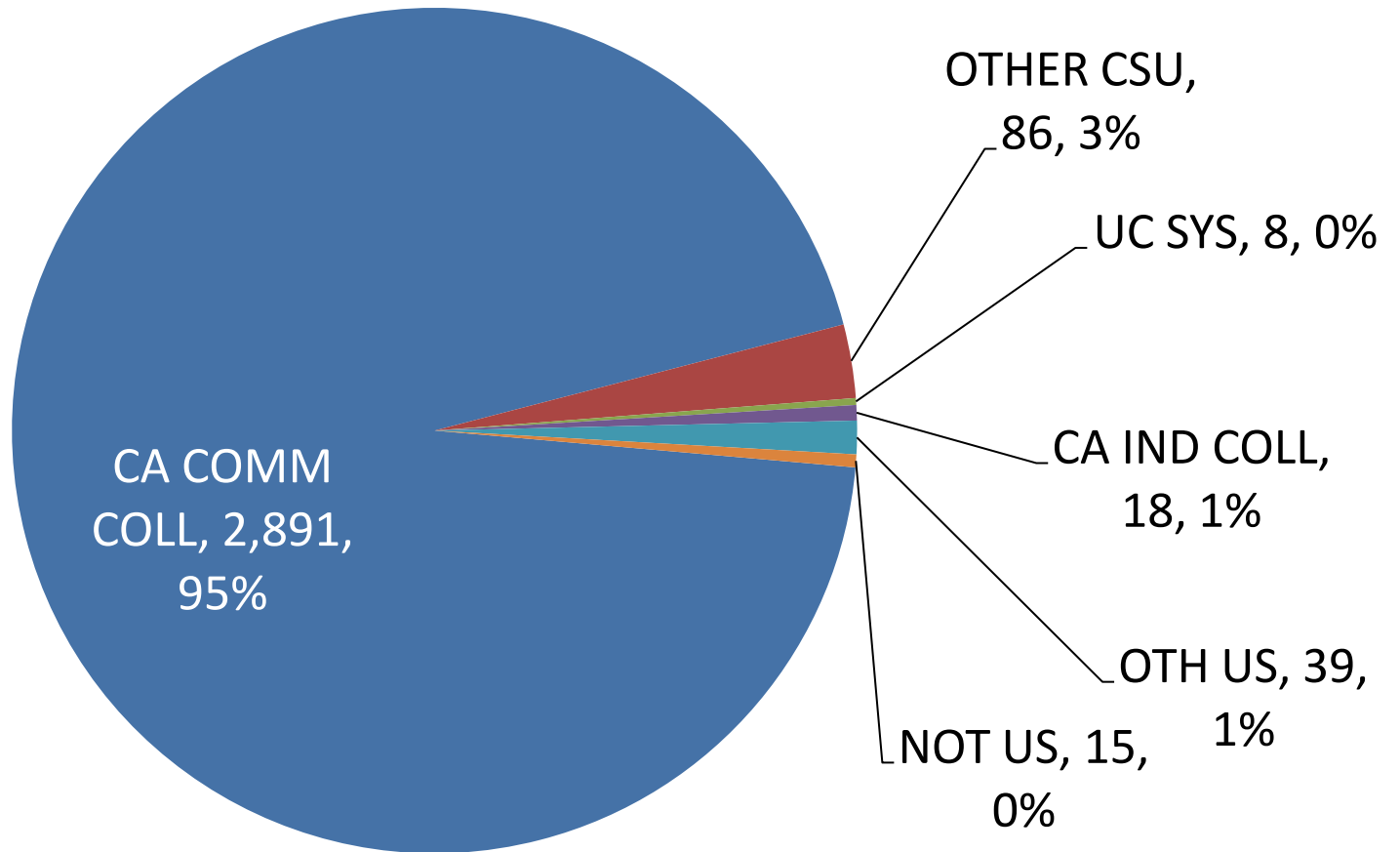
Fall 2007 percentages are shown in parentheses

# Major Choices of Our New Upper Division Transfers

Fall 2008

<b>Major Choice</b>	<b>Enrolled</b>
<b>Business Administration</b>	<b>644</b>
<b>Communications</b>	<b>307</b>
<b>Psychology</b>	<b>233</b>
<b>Liberal Studies</b>	<b>172</b>
<b>Child and Adolescent Studies</b>	<b>128</b>
<b>Human Services</b>	<b>120</b>
<b>Art</b>	<b>118</b>
<b>Kinesiology</b>	<b>102</b>
<b>Sociology</b>	<b>101</b>
<b>History</b>	<b>99</b>

Prior Institution Type  
New Fall 2008 Upper Division Transfers  
(3,057 students)



**We have been the # 1 destination  
for California Community College transfers  
among all California public universities  
for ten consecutive years**

	1998-99	1999-00	2000-01	2001-02	2002-03	2003-04	2004-05	2005-06	2006-07	2007-08
<b>CSU FULLERTON</b>	<b>4,126</b>	<b>4,318</b>	<b>4,436</b>	<b>4,761</b>	<b>4,877</b>	<b>4,280</b>	<b>6,094</b>	<b>5,113</b>	<b>5,412</b>	<b>5,495</b>
CSU LONG BEACH	3,264	3,789	3,438	4,079	4,156	3,479	4,047	3,529	4,373	4,272
CSU NORTHRIDGE	3,388	3,915	4,299	4,562	4,312	3,991	4,360	4,750	4,820	4,861
CSU SACRAMENTO	3,664	3,929	3,970	4,074	3,841	3,771	4,398	3,986	4,249	4,109
SAN DIEGO STATE	3,746	3,666	4,150	3,565	3,414	3,347	3,360	4,648	4,324	4,382
SAN FRANCISCO STATE	3,508	3,498	3,212	3,289	3,786	3,979	4,040	3,901	4,103	3,906
SAN JOSE STATE	3,681	3,555	3,243	3,409	3,506	3,225	3,212	3,525	3,618	4,000
UC BERKELEY	1,653	1,682	1,548	1,745	1,851	1,767	1,870	2,024	2,018	2,080
UC LOS ANGELES	2,054	2,430	2,488	2,780	2,555	2,965	2,847	2,951	3,065	3,048
UC SAN DIEGO	1,108	1,253	1,333	1,445	1,690	1,767	1,645	1,760	1,797	1,979

Source: CPEC Transfer Pathways <http://www.cpec.ca.gov/OnLineData/TransferPathway.asp>

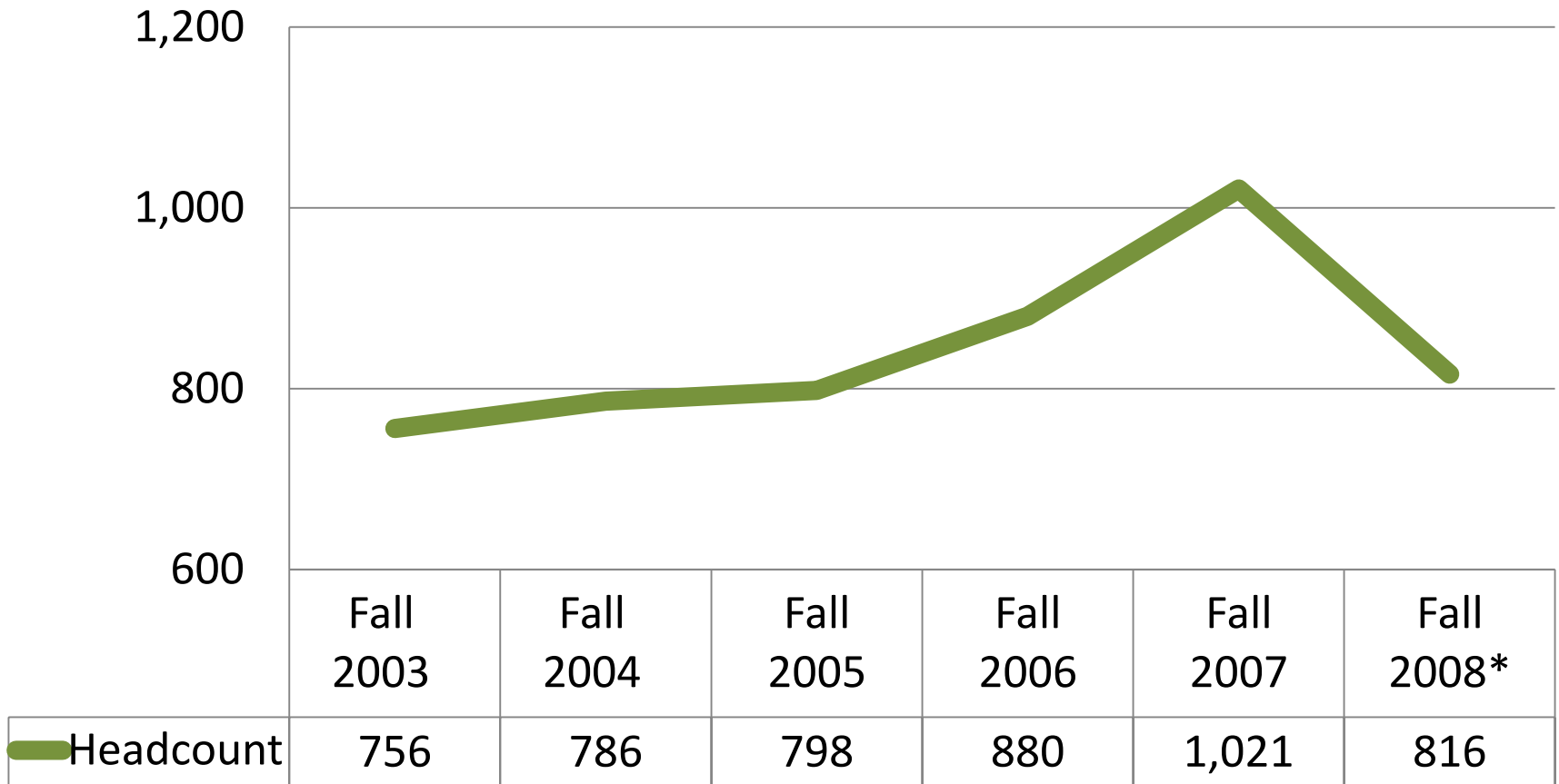
# Top 10 Prior Institutions of New Upper Division Transfers

Fall 2008

<b>Transfer Institution</b>	<b>Enrolled</b>
<b>Fullerton College</b>	<b>545</b>
<b>Orange Coast College</b>	<b>329</b>
<b>Mount San Antonio College</b>	<b>241</b>
<b>Santa Ana College</b>	<b>222</b>
<b>Saddleback College</b>	<b>218</b>
<b>Cypress College</b>	<b>154</b>
<b>Santiago Canyon College</b>	<b>128</b>
<b>Irvine Valley College</b>	<b>125</b>
<b>Golden West College</b>	<b>124</b>
<b>Cerritos Community College</b>	<b>96</b>

**FALL 2008**  
**NEW UPPER DIVISION TRANSFERS FROM**  
**CALIFORNIA COMMUNITY COLLEGES**  
**EXPRESSING INTENT TO PURSUE A CREDENTIAL**

# New Upper Division Transfers from California Community Colleges Expressing Intent to Pursue a Credential



\* Due to budget crisis, transfer applications were closed in mid-February 2008 creating a shorter application period for new upper division transfers than previous years

## Fall 2008 New Upper Division Transfers from California Community Colleges Expressing Intent to Pursue a Credential

	<b>MULT SUBJ</b>	<b>SPEC ED</b>	<b>SINGLE SUBJ</b>	<b>OTH SPEC</b>	<b>SERVICE</b>	<b>CLIN REHAB</b>	<b>Total</b>
<b>Fullerton College</b>	<b>50</b>	<b>10</b>	<b>74</b>	<b>1</b>	<b>12</b>	<b>3</b>	<b>150</b>
<b>Santa Ana College</b>	<b>42</b>	<b>13</b>	<b>32</b>	<b>0</b>	<b>4</b>	<b>3</b>	<b>94</b>
<b>Orange Coast College</b>	<b>29</b>	<b>6</b>	<b>35</b>	<b>2</b>	<b>2</b>	<b>0</b>	<b>74</b>
<b>Mount San Antonio College</b>	<b>24</b>	<b>4</b>	<b>38</b>	<b>0</b>	<b>2</b>	<b>3</b>	<b>71</b>
<b>Saddleback College</b>	<b>30</b>	<b>4</b>	<b>21</b>	<b>0</b>	<b>3</b>	<b>1</b>	<b>59</b>
<b>Santiago Canyon College</b>	<b>22</b>	<b>5</b>	<b>20</b>	<b>1</b>	<b>0</b>	<b>1</b>	<b>49</b>
<b>Cypress College</b>	<b>23</b>	<b>2</b>	<b>14</b>	<b>0</b>	<b>4</b>	<b>1</b>	<b>44</b>
<b>Cerritos Community College</b>	<b>14</b>	<b>4</b>	<b>17</b>	<b>1</b>	<b>4</b>	<b>0</b>	<b>40</b>
<b>Irvine Valley College</b>	<b>12</b>	<b>2</b>	<b>14</b>	<b>0</b>	<b>2</b>	<b>2</b>	<b>32</b>
<b>Golden West College</b>	<b>9</b>	<b>2</b>	<b>12</b>	<b>0</b>	<b>1</b>	<b>1</b>	<b>25</b>
<b>Citrus Community College</b>	<b>8</b>	<b>0</b>	<b>15</b>	<b>0</b>	<b>0</b>	<b>1</b>	<b>24</b>
<b>Riverside Community College</b>	<b>13</b>	<b>0</b>	<b>7</b>	<b>0</b>	<b>1</b>	<b>2</b>	<b>23</b>

## Fall 2008 New Upper Division Transfers from California Community Colleges Expressing Intent to Pursue a Credential (cont.)

	<b>MULT SUBJ</b>	<b>SPEC ED</b>	<b>SINGLE SUBJ</b>	<b>OTH SPEC</b>	<b>SERVICE</b>	<b>CLIN REHAB</b>	<b>Total</b>
<b>Rio Hondo Community College</b>	<b>6</b>	<b>2</b>	<b>8</b>	<b>0</b>	<b>3</b>	<b>1</b>	<b>20</b>
<b>Chaffey Community College</b>	<b>6</b>	<b>4</b>	<b>5</b>	<b>0</b>	<b>1</b>	<b>0</b>	<b>16</b>
<b>El Camino College</b>	<b>3</b>	<b>2</b>	<b>7</b>	<b>0</b>	<b>1</b>	<b>0</b>	<b>13</b>
<b>Coastline Community College</b>	<b>1</b>	<b>2</b>	<b>5</b>	<b>0</b>	<b>2</b>	<b>0</b>	<b>10</b>
<b>Long Beach City College</b>	<b>1</b>	<b>0</b>	<b>6</b>	<b>0</b>	<b>2</b>	<b>0</b>	<b>9</b>
<b>Palomar College</b>	<b>3</b>	<b>0</b>	<b>5</b>	<b>0</b>	<b>0</b>	<b>0</b>	<b>8</b>
<b>Pasadena City College</b>	<b>4</b>	<b>0</b>	<b>3</b>	<b>0</b>	<b>1</b>	<b>0</b>	<b>8</b>
<b>East Los Angeles College</b>	<b>3</b>	<b>0</b>	<b>0</b>	<b>0</b>	<b>2</b>	<b>0</b>	<b>5</b>
<b>Victor Valley Community College</b>	<b>3</b>	<b>1</b>	<b>1</b>	<b>0</b>	<b>0</b>	<b>0</b>	<b>5</b>
<b>Mount San Jacinto College</b>	<b>1</b>	<b>0</b>	<b>3</b>	<b>0</b>	<b>0</b>	<b>0</b>	<b>4</b>
<b>Other California Community Colleges</b>	<b>12</b>	<b>1</b>	<b>20</b>	<b>0</b>	<b>0</b>	<b>0</b>	<b>33</b>
<b>Total</b>	<b>319</b>	<b>64</b>	<b>362</b>	<b>5</b>	<b>47</b>	<b>19</b>	<b>816</b>

# **COMMUNITY COLLEGE TRANSFER 4-YEAR GRADUATION RATES**

**FALL 2003 COMMUNITY COLLEGE TRANSFERS**

## Fall 2003 Community College Transfer 4 Year Graduation Rate Comparison Seven Large CSU Campuses and Systemwide

	Headcount	% Part-time	Graduated in 4 Yrs or less	Enrolled Fall yr 5
San Diego	2,931	28.5%	72.0%	5.3%
Northridge	2,490	29.3%	67.2%	7.6%
<b>Fullerton</b>	<b>3,015</b>	<b>36.0%</b>	<b>66.4%</b>	<b>7.9%</b>
San Francisco	2,783	21.6%	65.9%	6.7%
Sacramento	2,617	25.5%	64.7%	8.4%
<b><i>Systemwide</i></b>	<b><i>32,198</i></b>	<b><i>26.5%</i></b>	<b><i>64.4%</i></b>	<b><i>7.9%</i></b>
Long Beach	2,714	30.2%	59.7%	11.1%
San Jose	1,642	36.5%	57.7%	11.9%

# **DEGREES AWARDED**

# Bachelor's Degrees Awarded 2007-08 by Student Entry Type

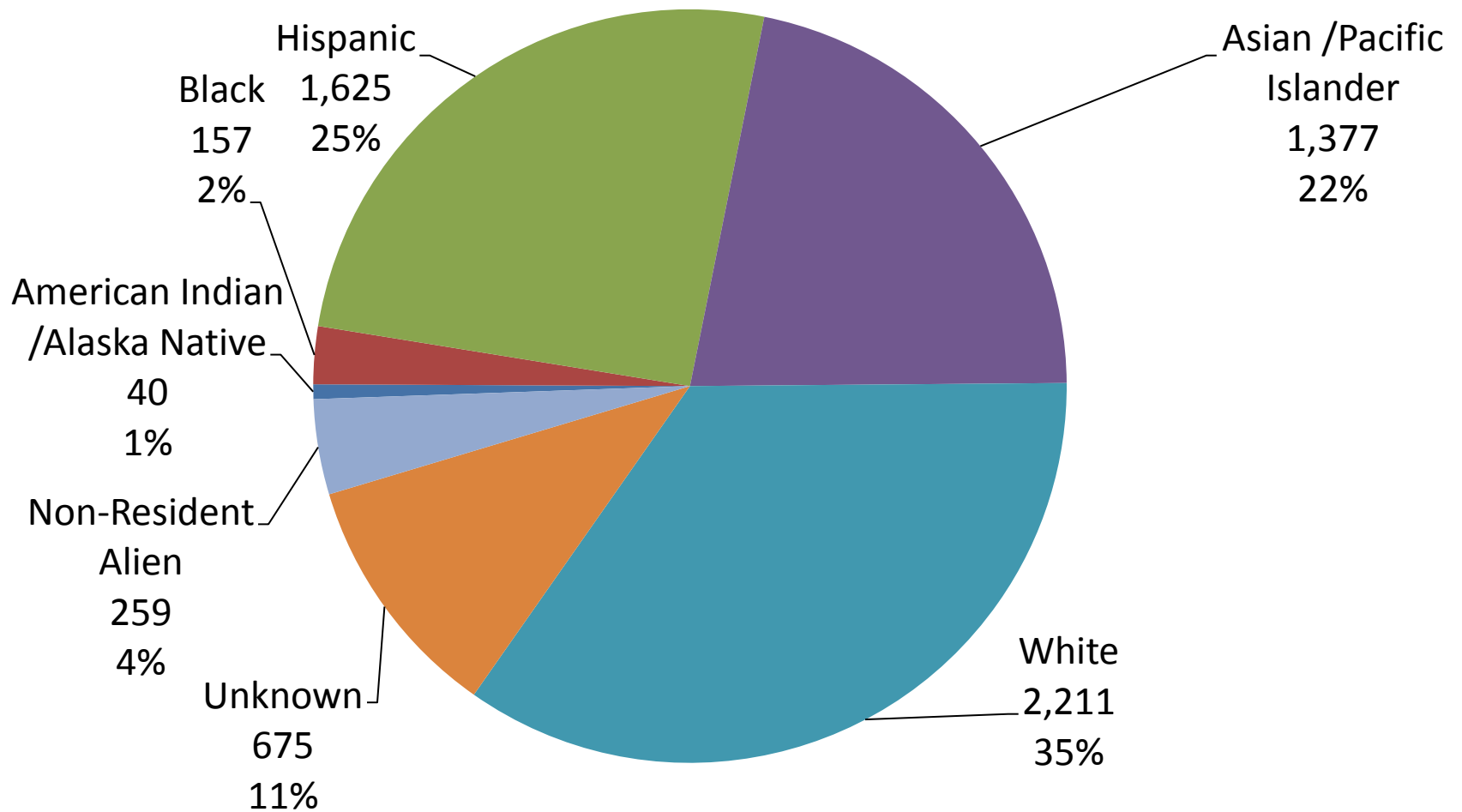
First-time Freshmen	New Transfers	2 <sup>nd</sup> BA Seeking	Total Bachelors Degrees Awarded
1,924 (30%)	4,404 (69%)	16 (0%)	6,344

Top Five Degree Awarding Majors for Students Entering as:

## New Transfers:

- Business (1,042);
- Communications (489)
- **Liberal Studies (284)**
- Psychology (274)
- **Child Adolescent Studies (270)**

# Ethnic Distribution of 2007-08 Bachelor's Degree Recipients



Bachelors (6,344 degrees)

**FALL 2008**  
**NEW POST BACCALAUREATE**  
**CREDENTIAL-SEEKING**

# Fall 2008 New Post-Baccalaureate Credential-Seeking Students

- 418 New Credential Students
- 84% Women
- Average Age 28.4
- Median Age 25
- Modal Age 22
- 42% Underrepresented
- 1% International Visa Students
- 65% Reside in Orange County
- 20% Reside in Los Angeles County
- 83% Full-time (12+ units)

Credential Program Enrollments		Top 5 Last Institution Attended	
Multiple Subject Instruction	<b>187</b>	California State University, Fullerton	<b>282</b>
Single Subject	<b>104</b>	University of California, Irvine	<b>13</b>
Special Education	<b>92</b>	University of California, Los Angeles	<b>11</b>
Clinical Rehabilitation	<b>24</b>	University of California, Riverside	<b>9</b>
Administrative Services	<b>5</b>	San Diego State University	<b>9</b>

## Top 10 Community College Initial Institutions of New Post-Baccalaureate Credential-Seeking Students

	MULT SUBJ	SPEC ED	SINGL SUBJ	SERVICE	CLIN REHAB	NO-TCH- PB-CERT	Total
Fullerton College	20	4	7	0	0	0	31
Mount San Antonio College	13	3	6	0	0	0	22
Orange Coast College	10	5	5	0	0	0	20
Santa Ana College	6	5	6	0	0	0	17
Saddleback College	12	0	3	0	1	0	16
Cypress College	9	4	2	0	0	0	15
Santiago Canyon College	8	3	4	0	0	0	15
Golden West College	6	2	3	0	0	0	11
Irvine Valley College	5	0	2	0	0	0	7
Rio Hondo Community College	3	1	3	0	0	0	7
Initially transferred to CSUF from California Community College	106	29	50	0	1	0	186
Initially attended Other College/University	81	63	54	5	23	6	232
<b>Total</b>	<b>187</b>	<b>92</b>	<b>104</b>	<b>5</b>	<b>24</b>	<b>6</b>	<b>418</b>

**CREDENTIALS RECOMMENDED FOR STUDENTS INITIALLY  
ENROLLING FROM CALIFORNIA COMMUNITY COLLEGES**

# Credentials recommended for students initially enrolling from California Community Colleges

	2002-03	2003-04	2004-05	2005-06	2006-07	Total
<b>Multiple Subjects Instruction</b>	<b>298</b> (34%)	<b>338</b> (37%)	<b>317</b> (37%)	<b>281</b> (44%)	<b>192</b> (37%)	<b>1,426</b> (37%)
<b>Special Education</b>	<b>40</b> (18%)	<b>71</b> (27%)	<b>60</b> (24%)	<b>89</b> (29%)	<b>83</b> (29%)	<b>343</b> (26%)
<b>Single Subject</b>	<b>98</b> (22%)	<b>121</b> (27%)	<b>124</b> (30%)	<b>98</b> (28%)	<b>118</b> (36%)	<b>559</b> (28%)
<b>Other Specialist instruction</b>	<b>4</b>	<b>6</b>	<b>7</b>	<b>7</b>	<b>5</b>	<b>29</b>
<b>Clinical Rehabilitation</b>	<b>2</b>	<b>6</b>	<b>6</b>	<b>4</b>	<b>6</b>	<b>24</b>
<b>Administrative Services</b>	<b>1</b>	<b>4</b>	<b>5</b>	<b>7</b>	<b>4</b>	<b>21</b>
<b>Total</b>	<b>443</b>	<b>546</b>	<b>519</b>	<b>486</b>	<b>408</b>	<b>2,402</b>

Percent of all credentials recommended in a given category and period for students initially enrolling from California Community Colleges are shown in parentheses.

2006-07 Credentials recommended for students  
initially enrolling from California Community Colleges

	<b>MULT SUBJ</b>	<b>SPEC ED</b>	<b>SINGLE SUBJ</b>	<b>OTH SPEC</b>	<b>SERVICE</b>	<b>CLIN REHAB</b>	<b>Total</b>
Fullerton College	<b>47</b>	<b>16</b>	<b>29</b>	<b>0</b>	<b>1</b>	<b>1</b>	<b>94</b>
Saddleback College	<b>31</b>	<b>16</b>	<b>12</b>	<b>1</b>	<b>1</b>	<b>1</b>	<b>62</b>
Santa Ana College	<b>19</b>	<b>9</b>	<b>7</b>	<b>1</b>	<b>1</b>	<b>0</b>	<b>37</b>
Orange Coast College	<b>17</b>	<b>6</b>	<b>13</b>	<b>0</b>	<b>0</b>	<b>1</b>	<b>37</b>
Mount San Antonio College	<b>15</b>	<b>3</b>	<b>13</b>	<b>0</b>	<b>0</b>	<b>1</b>	<b>32</b>
Cypress College	<b>12</b>	<b>6</b>	<b>7</b>	<b>0</b>	<b>0</b>	<b>0</b>	<b>25</b>
Santiago Canyon College	<b>8</b>	<b>5</b>	<b>4</b>	<b>0</b>	<b>0</b>	<b>0</b>	<b>17</b>
Golden West College	<b>9</b>	<b>4</b>	<b>3</b>	<b>1</b>	<b>0</b>	<b>0</b>	<b>17</b>
Riverside Community College	<b>5</b>	<b>3</b>	<b>5</b>	<b>1</b>	<b>0</b>	<b>1</b>	<b>15</b>
Irvine Valley College	<b>10</b>	<b>3</b>	<b>1</b>	<b>0</b>	<b>0</b>	<b>1</b>	<b>15</b>
Citrus Community College	<b>3</b>	<b>4</b>	<b>3</b>	<b>0</b>	<b>0</b>	<b>0</b>	<b>10</b>
Cerritos Community College	<b>2</b>	<b>3</b>	<b>3</b>	<b>1</b>	<b>1</b>	<b>0</b>	<b>10</b>

2006-07 Credentials recommended for students  
initially enrolling from California Community Colleges

	MULT SUBJ	SPEC ED	SINGLE SUBJ	OTH SPEC	SERVICE	CLIN REHAB	Total
Chaffey Community College	3	2	3	0	0	0	8
Rio Hondo Community College	3	0	4	0	0	0	7
Long Beach City College	1	1	3	0	0	0	5
Coastline Community College	3	1	1	0	0	0	5
Palomar College	1	1	1	0	0	0	3
City College of San Francisco	0	0	2	0	0	0	2
Santa Rosa Junior College	1	0	0	0	0	0	1
San Diego Miramar College	1	0	0	0	0	0	1
San Bernardino Valley College	0	0	1	0	0	0	1
Mount San Jacinto College	0	0	1	0	0	0	1
Moorpark College	1	0	0	0	0	0	1
Fresno City College	0	0	1	0	0	0	1
Antelope Valley College	0	0	1	0	0	0	1
<b>Total</b>	<b>192</b>	<b>83</b>	<b>118</b>	<b>5</b>	<b>4</b>	<b>6</b>	<b>408</b>

Presentation will be made available at:

[www.fullerton.edu/cct](http://www.fullerton.edu/cct)

In CCT Links Section