

# Tableaux d'une Exposition

Pictures at an Exhibition  
Trumpet 1 in C Excerpt  
(Beginning to 2)

de M. Moussorgsky

Orchestration de  
Maurice RAVEL

**TROMBE I II**  
en Ut

## Promenade

Entire Page  
1st Trumpet in C

Allegro giusto, nel modo russo; senza allegrezza, ma poco sostenuto.

Measures 1-2 of the musical score. The upper voice begins with a piano (*f*) dynamic. The bass line is in the lower voice.

Measures 3-4 of the musical score. The upper voice begins with a circled 1. The bass line is in the lower voice.

Measures 5-6 of the musical score. The upper voice begins with a circled 2. The bass line is in the lower voice.

Measures 7-8 of the musical score. The upper voice begins with a circled 3. The bass line is in the lower voice.

Measures 9-10 of the musical score. The upper voice begins with a circled 4. The bass line is in the lower voice.

# MUSIC FOR PRAGUE 1968

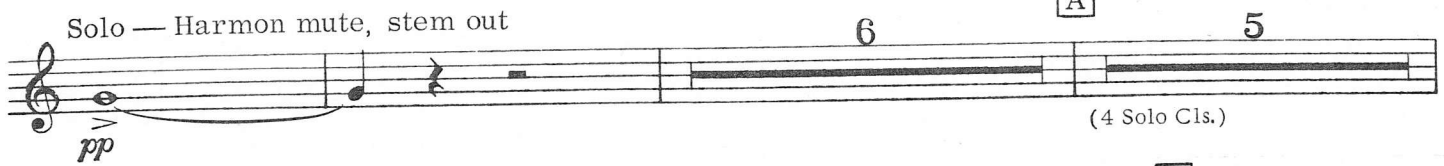
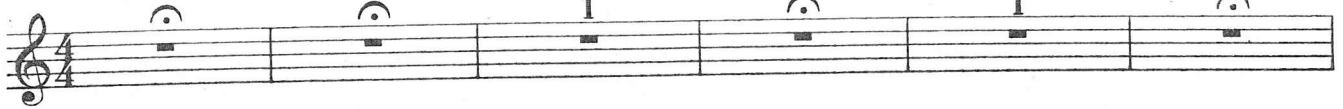
for Concert Band

KAREL HUSA

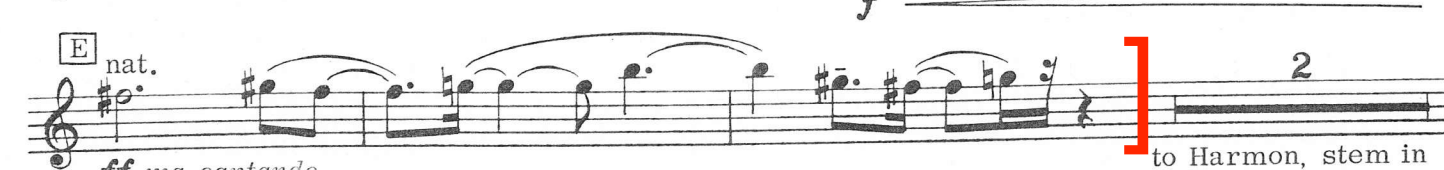
1st B♭ Trumpet/Cornet (*div.*)

## I. Introduction and Fanfare

Adagio



top divisi





# IV. Toccata and Chorale

1st B $\flat$  Trumpet/Cornet

Husa - Music for Prague 1968

Vivace

St. mute

*ff*

*ff* *p* Solo

*p* *p*

**A** 17 **B** 7 **C** 11 Solo *mf*

(Cl.) (Obs., Bns.) (Tbns.)

*mf*

*f*

*f*

*f* *dim. poco a poco* (mp) **D**

*p* 10 **E** 3 9 Tutti, unis. *f*

(Low Wws.) (+Saxes, Hns.)

**F** 1 **G** 13 5

(Tbn. Hns.)

# OVERTURE TO "COLAS BREUGNON"

Play on Bb trumpet if you do not have access to a fluegelhorn  
1st & 2nd Fluegelhorns

DMITRI KABALEVSKY  
Transcribed by Donald Hunsberger

Allegro

ff

6

Fast. One beat per bar. half note = 116-120

1

Presto

3

p

2

p

p

3

a2

p

4

cresc.

3

5

pp

pp