

# Orange County Boundary and Annexation Report 2007-2008 (January 1)



1. West Santa Ana Heights Reorganization to the City of Newport Beach (RO 06-43)
2. Manchester Walk Reorganization (RO 06-43) and SOI
3. Talega Annexation No. 34 to the City of San Clemente (CA 05-07)
4. Talega Annexation No. 39 to the City of San Clemente (CA 05-12)
5. Talega Annexation No. 39 to the City of San Clemente (CA 05-10)
6. Talega Annexation No. 33 to the City of San Clemente (CA 05-06)
7. Talega Annexation No. 31 to the City of San Clemente (CA 05-04)
8. Signal Landmark Reorganization to the City of Huntington Beach (RO 05-60)

	January 1, 2008 Jurisdictions
	January 1, 2007 Jurisdictions

Source: OC Geomatics, 2007 & 2008  
 Note: Coastal boundary represents mean high tide circa 2015. Coastal boundary approximated by CDR GIS staff.

**Orange County Boundary and Annexation Report 2007-2008**

Jurisdiction	Total Area (Square Miles)*		Area Change 2007-2008**	Annexation Reference #
	January 1, 2007	January 1, 2008		
Aliso Viejo	6.921	6.921	0	
Anaheim	50.872	50.872	-0.000001	2
Brea	12.221	12.221	0	
Buena Park	10.550	10.550	0	
Costa Mesa	15.827	15.827	0	
Cypress	6.622	6.622	0	
Dana Point	6.604	6.604	0	
Fountain Valley	9.048	9.048	0	
Fullerton	22.447	22.447	0	
Garden Grove	17.923	17.923	0	
Huntington Beach	27.370	27.376	0.0055	8
Irvine	65.976	65.976	0	
Laguna Beach	8.919	8.919	0	
Laguna Hills	6.641	6.641	0	
Laguna Niguel	14.787	14.787	0	
Laguna Woods	3.038	3.038	0	
La Habra	7.360	7.360	0	
Lake Forest	16.785	16.785	0	
La Palma	1.804	1.804	0	
Los Alamitos	4.089	4.089	0	
Mission Viejo	17.933	17.933	0	
Newport Beach	25.874	25.984	0.1100	1
Orange	25.783	25.783	0.000001	2
Placentia	6.621	6.621	0	
Rancho Santa Margarita	12.937	12.937	0	
San Clemente	18.127	18.355	0.2278	3,4,5,6,7
San Juan Capistrano	14.177	14.177	0	
Santa Ana	27.352	27.352	0	
Seal Beach	11.991	11.991	0	
Stanton	3.087	3.087	0	
Tustin	11.137	11.137	0	
Villa Park	2.078	2.078	0	
Westminster	10.070	10.070	0	
Yorba Linda	19.867	19.867	0	
Unincorporated	277.080	276.737	-0.3433	1,3,4,5,6,7,8
<b>Orange County</b>	<b>799.920</b>	<b>799.920</b>	<b>0</b>	

Source: O.C. Geomatics, 2007 & 2008

\*Area calculated in ArcGIS by CDR.

\*\*Annual area change totals may not match detailed annexation information due to rounding.

**Detailed Annexation List:**

- 1) West Santa Ana Heights Reorganization to the City of Newport Beach (RO 06-25)  
Effective: 9/17/2007  
From Unincorporated Orange County to Newport Beach  
Inhabited  
70.6 acres (0.110 sq. miles)
- 2) Manchester Walk Reorganization (RO 06-43) and SOI  
Effective: 10/4/2007  
From Anaheim to Orange  
Uninhabited  
0.008 acres (0.00000125 sq. miles)
- 3) Talega Annexation No. 34 to the City of San Clemente (CA 05-07)  
Effective: 10/31/2007  
From Unincorporated Orange County to San Clemente  
Inhabited  
6.997 acres (0.0109 sq. miles)
- 4) Talega Annexation No. 39 to the City of San Clemente (CA 05-12)  
Effective: 10/31/2007  
From Unincorporated Orange County to San Clemente  
Inhabited  
96.525 acres (0.150 sq. miles)
- 5) Talega Annexation No. 37 to the City of San Clemente (CA 05-10)  
Effective: 10/31/2007  
From Unincorporated Orange County to San Clemente  
Inhabited  
11.202 acres (0.0175 sq. miles)

Additional annexations listed on next page.

**Notes:**

Benchmark 2015.

Some jurisdictions' legal boundary extends three miles off the coast.

A fixed boundary line at the coast was created in November 2014 based on high-resolution county-wide aerial imagery that was captured on June 19, 2013, to approximate the ocean waterline and to eliminate artificial land area changes to jurisdictions adjacent to the Orange County coast. This coast line does not define any vertical datum such as mean high tide, mean sea level, or mean lower low tide. This reference line was developed through a collaboration of OC Public Works, OC LAFCO, and CDR; it has no legal value; and its purpose is for CDR's use in reporting population density and jurisdictional annexations.

For official legal boundaries, contact the County of Orange Surveyor's office <http://ocpublicworks.com/survey/>

## Orange County Boundary and Annexation Report 2007-2008

### Detailed Annexation List (Continued):

- 6) Talega Annexation No. 33 to the City of San Clemente (CA 05-06)  
Effective: 10/31/2007  
From Unincorporated Orange County to San Clemente  
Inhabited  
25.484 acres (0.0398 sq. miles)
- 7) Talega Annexation No. 31 to the City of San Clemente (CA 05-04)  
Effective: 10/31/2007  
From Unincorporated Orange County to San Clemente  
Inhabited  
6.165 acres (0.00963 sq. miles)
- 8) Signal Landmark Reorganization to the City of Huntington Beach (RO 05-60)  
Effective: 12/17/2007  
From Unincorporated Orange County to Huntington Beach  
Uninhabited  
3.495 acres (0.00546 sq. miles)

### Notes:

Benchmark 2015.

Some jurisdictions' legal boundary extends three miles off the coast.

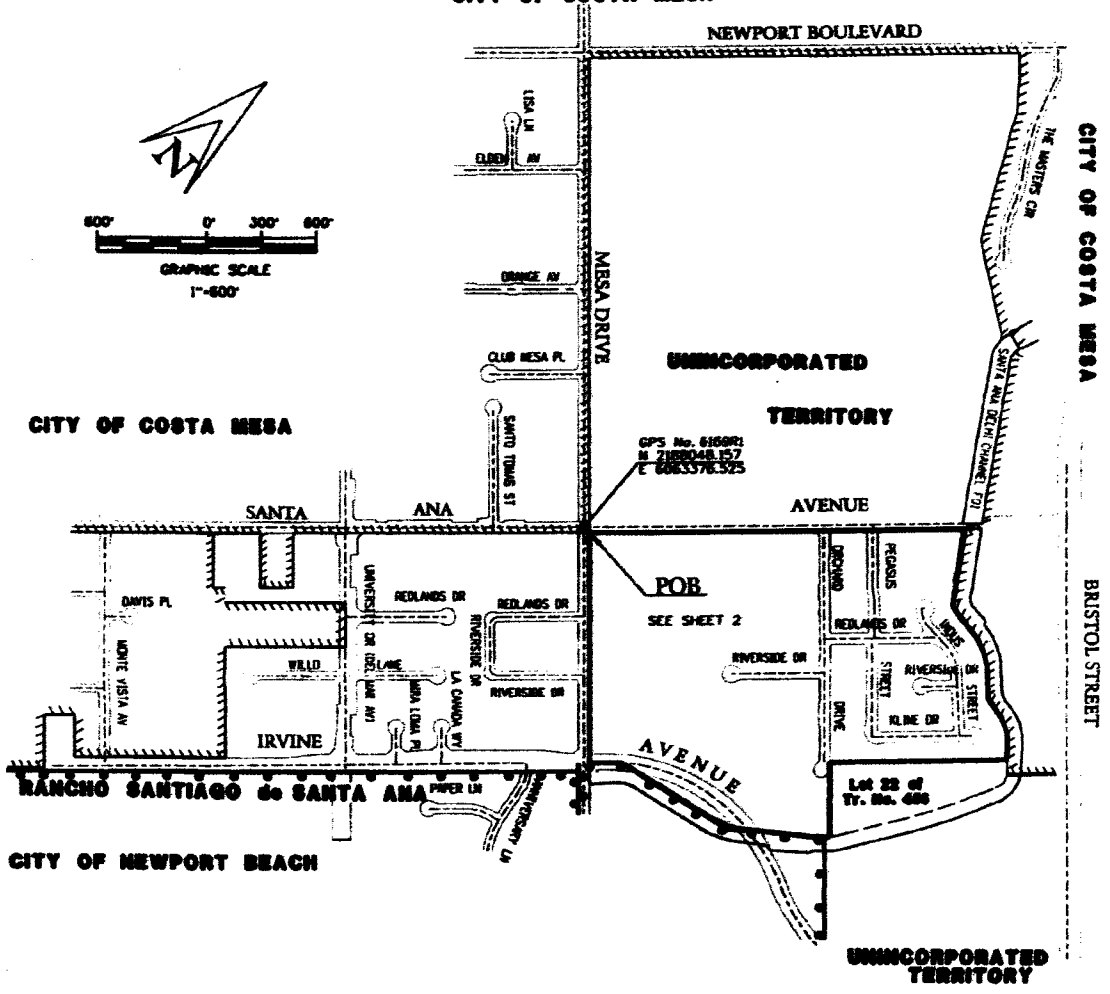
A fixed boundary line at the coast was created in November 2014 based on high-resolution county-wide aerial imagery that was captured on June 19, 2013, to approximate the ocean waterline and to eliminate artificial land area changes to jurisdictions adjacent to the Orange County coast. This coast line does not define any vertical datum such as mean high tide, mean sea level, or mean lower low tide. This reference line was developed through a collaboration of OC Public Works, OC LAFCO, and CDR; it has no legal value; and its purpose is for CDR's use in reporting population density and jurisdictional annexations.

For official legal boundaries, contact the County of Orange Surveyor's office <http://ocpublicworks.com/survey/>

# WEST SANTA ANA HEIGHTS REORGANIZATION TO THE CITY OF NEWPORT BEACH NO. RO 06-25

## LOCATION MAP

CITY OF COSTA MESA



THIS PROPOSAL WAS PREPARED BY ME OR UNDER MY DIRECTION.

*Wanda Bale*  
 WANDA BALE, L.S. 7695  
 MY LICENSE EXPIRES 12/31/08



THIS PARCEL OF LAND CONTAINS  
 70.6 ACRES ±.

THIS PROPOSAL DOES MEET THE APPROVAL OF THE  
 ORANGE COUNTY SURVEYORS OFFICE  
 DATED THIS 12 DAY OF Dec 2007.

*Raymond L. Mathe*  
 RAYMOND L. MATHE, COUNTY SURVEYOR, L.S. 6185  
 MY LICENSE EXPIRES 3/31/08



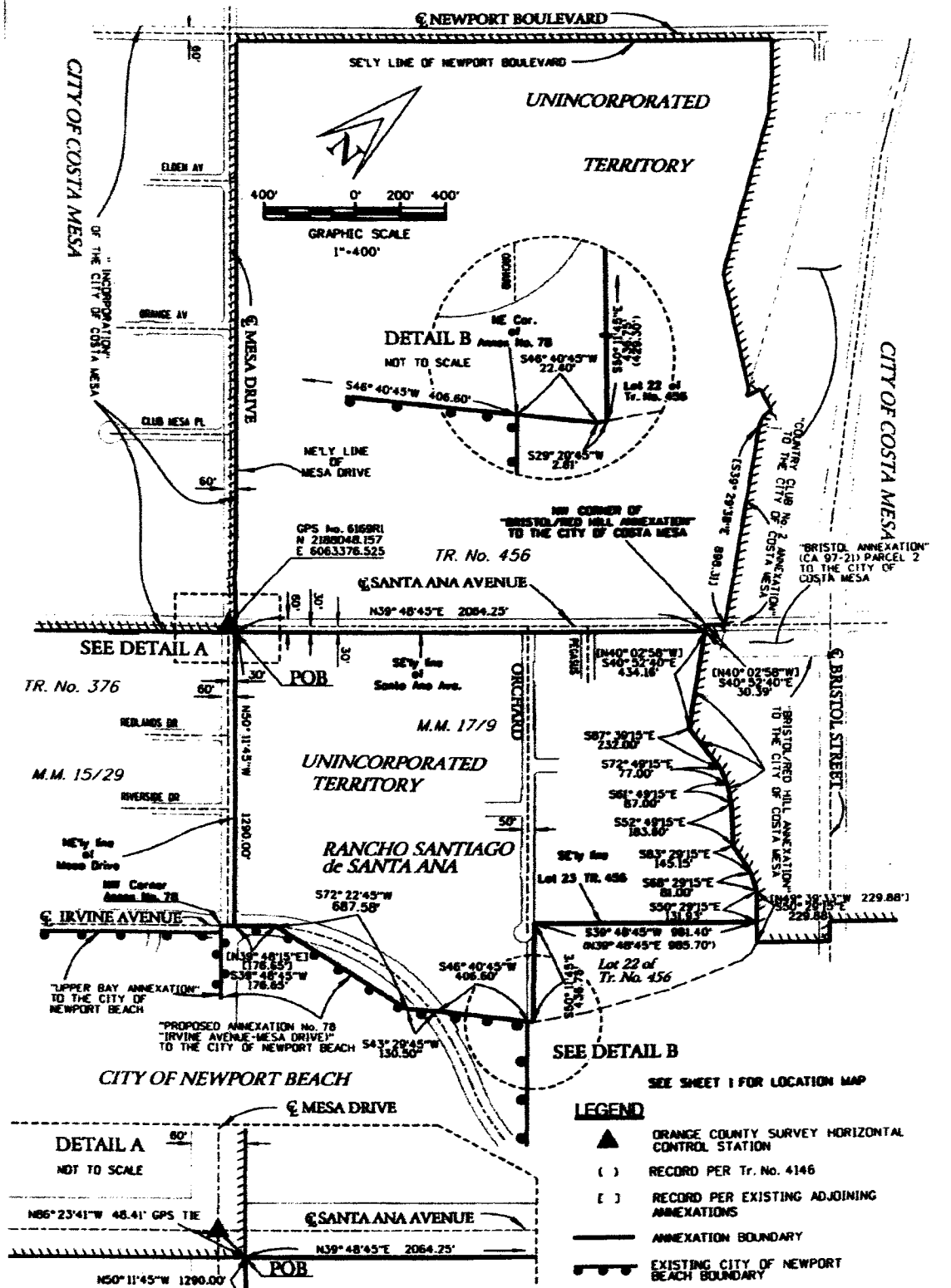
### LEGEND

- ANNEXATION BOUNDARY
- EXISTING CITY OF NEWPORT BEACH BOUNDARY
- EXISTING CITY OF COSTA MESA BOUNDARY
- ORANGE COUNTY SURVEY HORIZONTAL CONTROL STATION

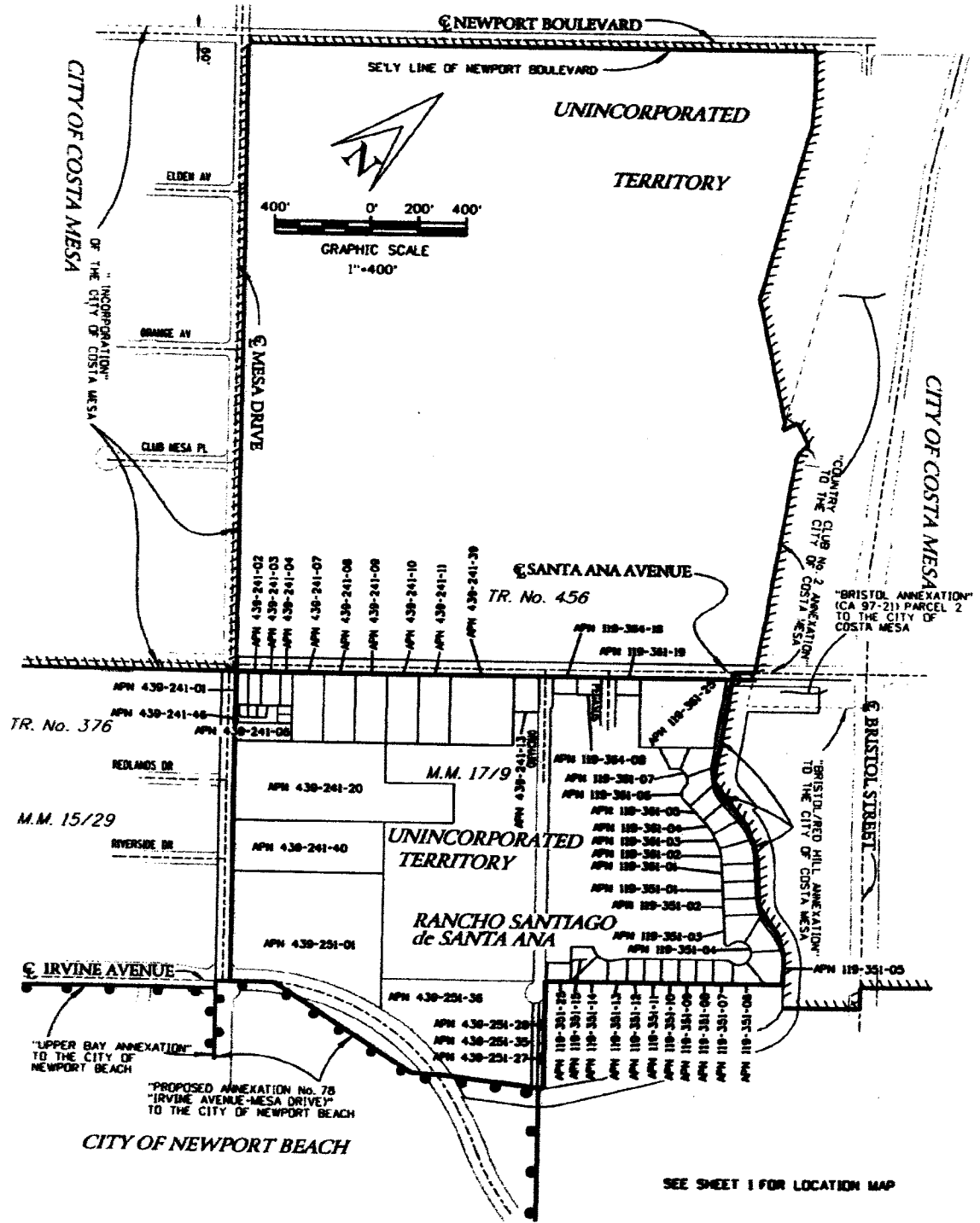
UNLESS OTHERWISE NOTED, ALL BEARINGS AND DISTANCES ON THIS MAP ARE GROUND AND ARE BASED UPON THE CALIFORNIA COORDINATE SYSTEM (CCS83), ZONE VI, 1983 MAD (1991.35 EPOCH DCS GPS ADJUSTMENT).

# EXHIBIT "A"

## WEST SANTA ANA HEIGHTS REORGANIZATION TO THE CITY OF NEWPORT BEACH NO. RO 06-25



# EXHIBIT "P" WEST SANTA ANA HEIGHTS REORGANIZATION TO THE CITY OF NEWPORT BEACH NO. RO 06-25



SEE SHEET 1 FOR LOCATION MAP

### LEGEND

- APN      ASSESSORS PARCEL MAP NUMBER
- ANNEXATION BOUNDARY
- EXISTING CITY OF NEWPORT BEACH BOUNDARY

**EXHIBIT "B"**  
 TO ACCOMPANY LEGAL DESCRIPTION  
**ANNEXATION NO. RO 06-43 TO THE CITY OF ORANGE**

**COUNTY SURVEYOR'S STATEMENT**

THIS PROPOSAL DOES MEET THE APPROVAL OF THE  
 ORANGE COUNTY SURVEYOR'S OFFICE  
 DATED THIS 9<sup>TH</sup> DAY OF APRIL, 2007.  
 BY: *Raymond L. Matre*, DEPUTY  
 RAYMOND L. MATRE, COUNTY SURVEYOR, L.S. 6186  
 MY LICENSE EXPIRES 03/31/2008



**ENGINEER'S STATEMENT**

THIS DOCUMENT HAS BEEN PREPARED BY ME OR  
 UNDER MY DIRECTION.

*Vincent W. Scarpati*  
 VINCENT W. SCARPATI, P.E. 30880  
 LICENSE EXPIRES 08/30/2008

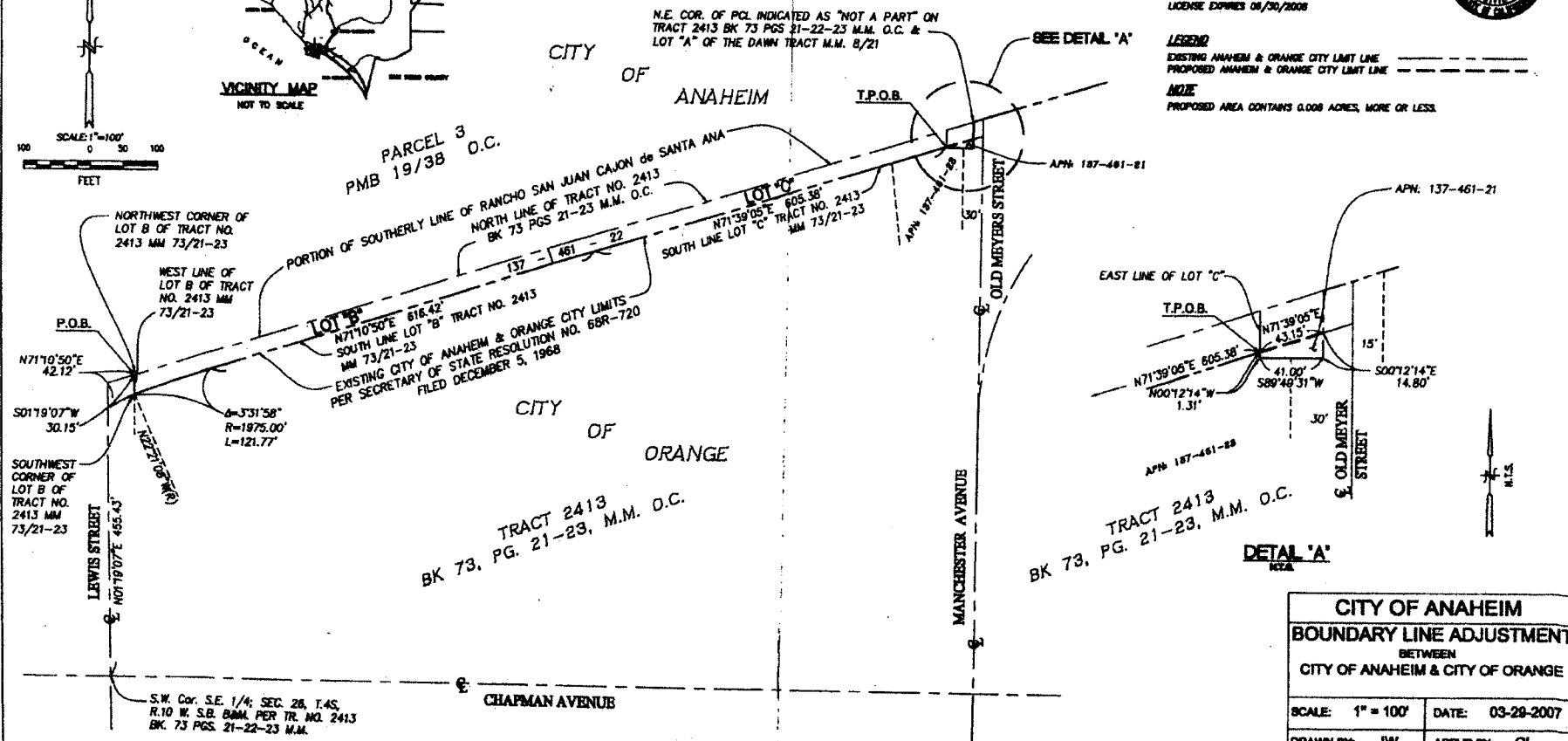
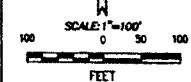
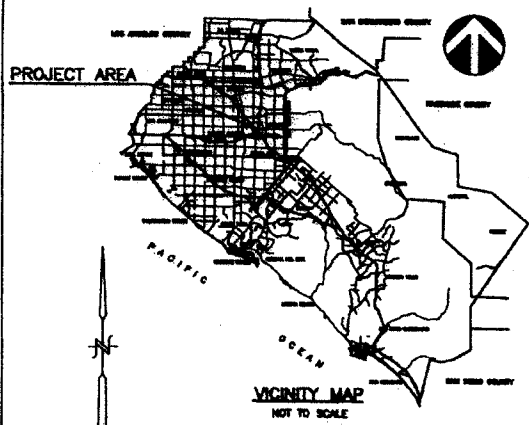


**LEGEND**

EXISTING ANAHEIM & ORANGE CITY LIMIT LINE  
 PROPOSED ANAHEIM & ORANGE CITY LIMIT LINE



**NOTE**

PROPOSED AREA CONTAINS 0.008 ACRES, MORE OR LESS.



CITY OF ANAHEIM	
BOUNDARY LINE ADJUSTMENT	
BETWEEN	
CITY OF ANAHEIM & CITY OF ORANGE	
SCALE: 1" = 100'	DATE: 03-29-2007
DRAWN BY: JW	APPROV BY: GL

**LEGEND**

-  EXISTING CITY OF SAN CLEMENTE BOUNDARY PER ANNEXATION NO. 11, ORDINANCE NO. 414, APRIL 19, 1963
-  ANNEXATION BOUNDARY.

**NOTE**

THIS ANNEXATION CONTAINS 6.997 ACRES.

UNLESS OTHERWISE NOTED, ALL DISTANCES ON THIS MAP ARE GROUND MEASUREMENTS. TO OBTAIN THE GRID DISTANCE BASED ON THE CALIFORNIA COORDINATE SYSTEM, (CCS83) ZONE VI NAD 1983 (1981.35 EPOCH O.C.S. GPS ADJUSTMENT), MULTIPLY GROUND DISTANCE BY 0.99994960.

APR 708-041-07

PREPARED BY ME OR UNDER MY DIRECT SUPERVISION



*Gregory A. Helmer*  
 GREGORY A. HELMER, L.S. 5134

THIS PROPOSAL DOES MEET THE APPROVAL OF THE ORANGE COUNTY SURVEYOR'S OFFICE.

DATED THIS 4th DAY OF May, 2005

RAYMOND L. MATHE, COUNTY SURVEYOR  
 L.S. 6185, EXPIRATION DATE MARCH 31, 2006



**EXHIBIT 'B'**  
 CA05-07  
 TALEGA ANNEXATION NO. 34  
 TO THE CITY OF SAN CLEMENTE

SHEET 1 OF 1 SHEET



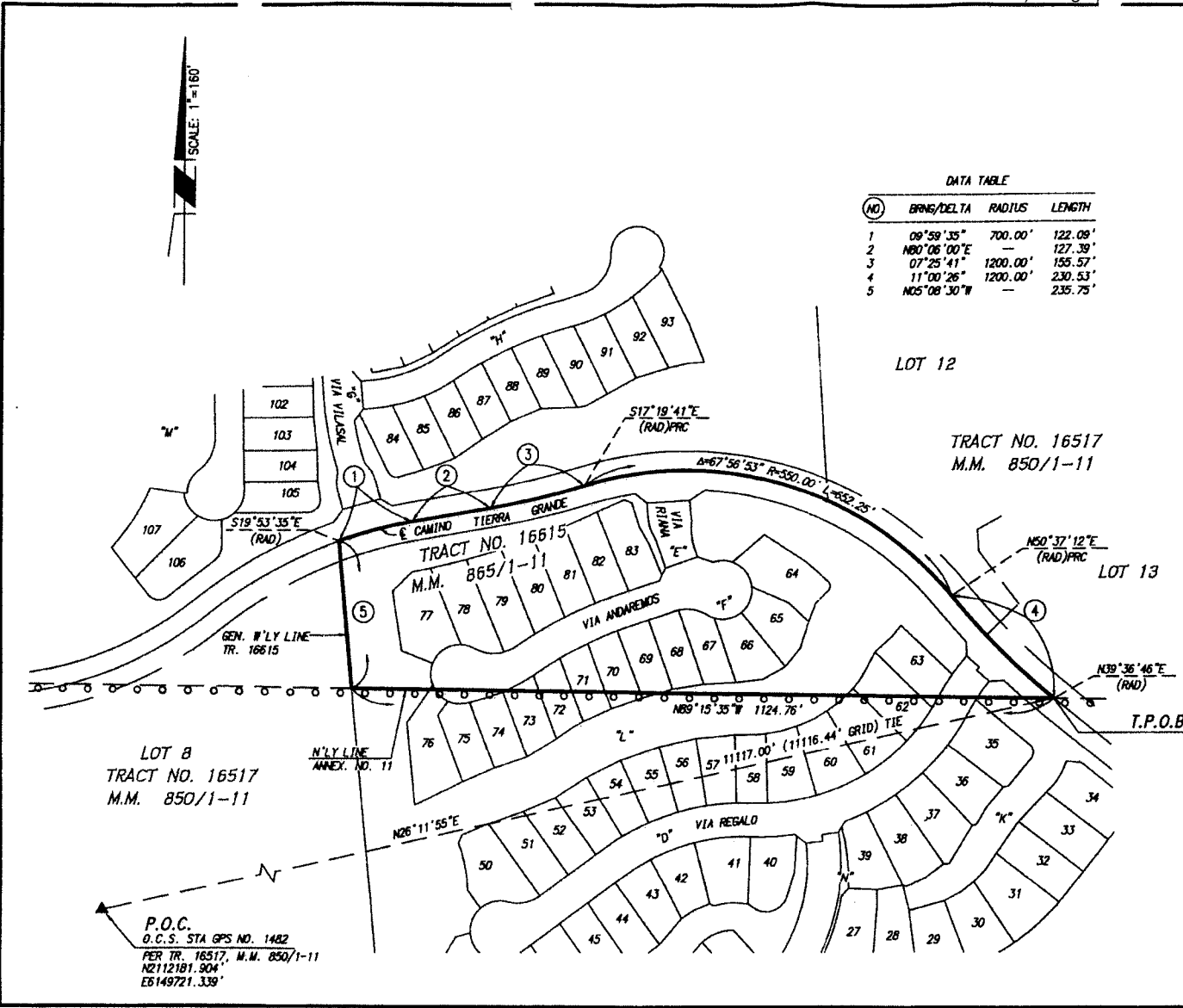
CONSULTING  
 REV. MAY 2, 2005  
 FEBRUARY 26, 2005

NOTE: ALTERN PHOTOS  
 DATE: CALIFORNIA 0505-2007  
 949.473806 • FAX 949.473807 • WWW.RBF.COM

J.N. 10-103698

DATA TABLE

NO.	Bearing/Delta	RADIUS	LENGTH
1	09°59'35"	700.00'	122.08'
2	N80°06'00"E	—	127.39'
3	07°25'41"	1200.00'	155.57'
4	11°00'26"	1200.00'	230.53'
5	N05°08'30"W	—	235.75'





**NOTE**

THIS ANNEXATION CONTAINS 96.525 ACRES.

UNLESS OTHERWISE NOTED, ALL DISTANCES ON THIS MAP ARE GROUND MEASUREMENTS. TO OBTAIN THE GRID DISTANCE BASED ON THE CALIFORNIA COORDINATE SYSTEM, (CCS83) ZONE VI MAD 1983 (1991.35 EPOCH O.C.S. GPS ADJUSTMENT), MULTIPLY GROUND DISTANCE BY 0.99994960.

APN: POR. 708-041-15 AND 708-041-13

PREPARED BY ME OR UNDER MY DIRECT SUPERVISION

*Kurt R. Troxell*  
 KURT R. TROXELL, L.S. 7854



**LEGEND**

- EXISTING CITY OF SAN CLEMENTE BOUNDARY
- ANNEXATION BOUNDARY.
- ( ) INDICATES RECORD DATA PER ANNEXATION NO. 11

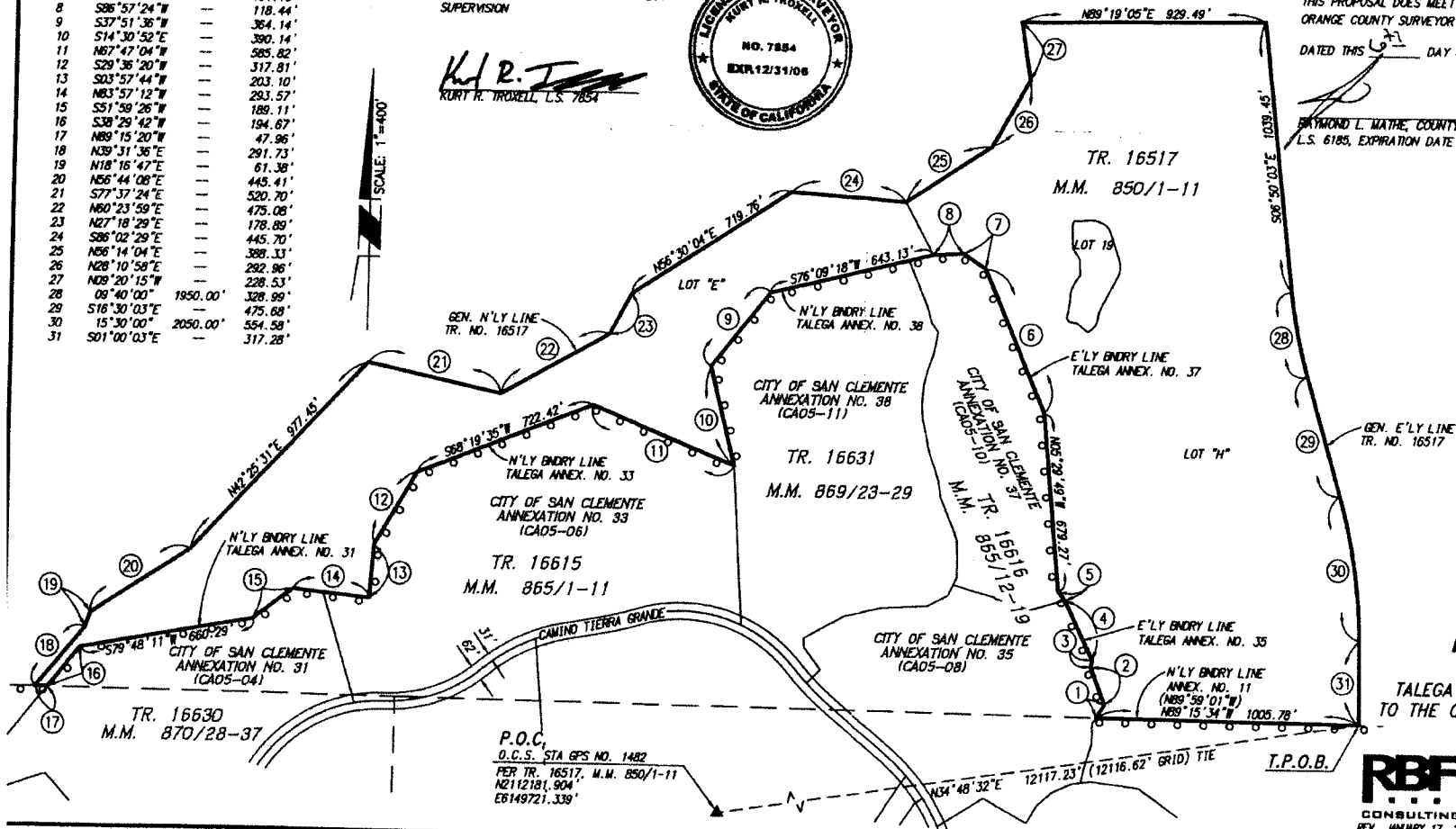
DATA TABLE

NO.	BRNG/DELTA	RADIUS	LENGTH
1	N32°12'18"E	--	56.69'
2	N21°11'38"W	--	153.21'
3	N12°31'44"E	--	26.42'
4	N25°52'34"W	--	249.95'
5	N38°22'03"W	--	41.92'
6	N22°54'38"W	--	595.66'
7	N55°41'28"W	--	101.10'
8	S86°57'24"W	--	118.44'
9	S37°51'36"W	--	364.14'
10	S14°30'52"E	--	390.14'
11	N67°47'04"W	--	585.82'
12	S29°36'20"W	--	317.81'
13	S03°57'44"W	--	203.10'
14	N83°57'12"W	--	293.57'
15	S51°58'26"W	--	189.11'
16	S38°29'42"W	--	194.67'
17	N89°15'20"W	--	47.96'
18	N39°31'36"E	--	291.73'
19	N18°16'47"E	--	61.38'
20	N56°44'08"E	--	445.41'
21	S77°37'24"E	--	520.70'
22	N60°23'59"E	--	475.08'
23	N27°18'29"E	--	178.89'
24	S86°02'29"E	--	445.70'
25	N56°14'04"E	--	388.33'
26	N28°10'58"E	--	292.96'
27	N09°20'15"W	--	228.53'
28	09°40'00"	1950.00'	328.99'
29	S18°30'03"E	--	475.68'
30	15°30'00"	2050.00'	554.58'
31	S01°00'03"E	--	317.28'

SCALE 1"=400'

THIS PROPOSAL DOES MEET THE APPROVAL OF THE ORANGE COUNTY SURVEYOR'S OFFICE.  
 DATED THIS 6<sup>TH</sup> DAY OF February, 2006

RAYMOND L. MATHE, COUNTY SURVEYOR  
 L.S. 6185, EXPIRATION DATE MARCH 31, 2006



**EXHIBIT 'B'**  
 CA05-12  
 TALEGA ANNEXATION NO. 39  
 TO THE CITY OF SAN CLEMENTE

SHEET 1 OF 1 SHEET  
 RBF PLANNING & DESIGN & CONSTRUCTION  
 CONSULTING  
 REV. JANUARY 17, 2006  
 AUGUST 22, 2005  
 J.N. 10-103698

**LEGEND**

— — — — — EXISTING CITY OF SAN CLEMENTE BOUNDARY  
 PER ANNEXATION NO. 35 CA05-08

— — — — — ANNEXATION BOUNDARY.

**NOTE**

THIS ANNEXATION CONTAINS 11.202 ACRES±.

UNLESS OTHERWISE NOTED, ALL DISTANCES ON THIS MAP ARE GROUND MEASUREMENTS. TO OBTAIN THE GRID DISTANCE BASED ON THE CALIFORNIA COORDINATE SYSTEM, (CCSR3) ZONE VI HAD 1983 (1991.35 EPOCH O.C.S. GPS ADJUSTMENT), MULTIPLY GROUND DISTANCE BY 0.99994960.

APN: POC. 708-041-10

PREPARED BY ME OR UNDER MY DIRECT SUPERVISION

*Gregory A. Helmer*  
 GREGORY A. HELMER, L.S. 5134



THIS PROPOSAL DOES MEET THE APPROVAL OF THE ORANGE COUNTY SURVEYOR'S OFFICE.

DATED THIS 4<sup>TH</sup> DAY OF MARCH, 2005

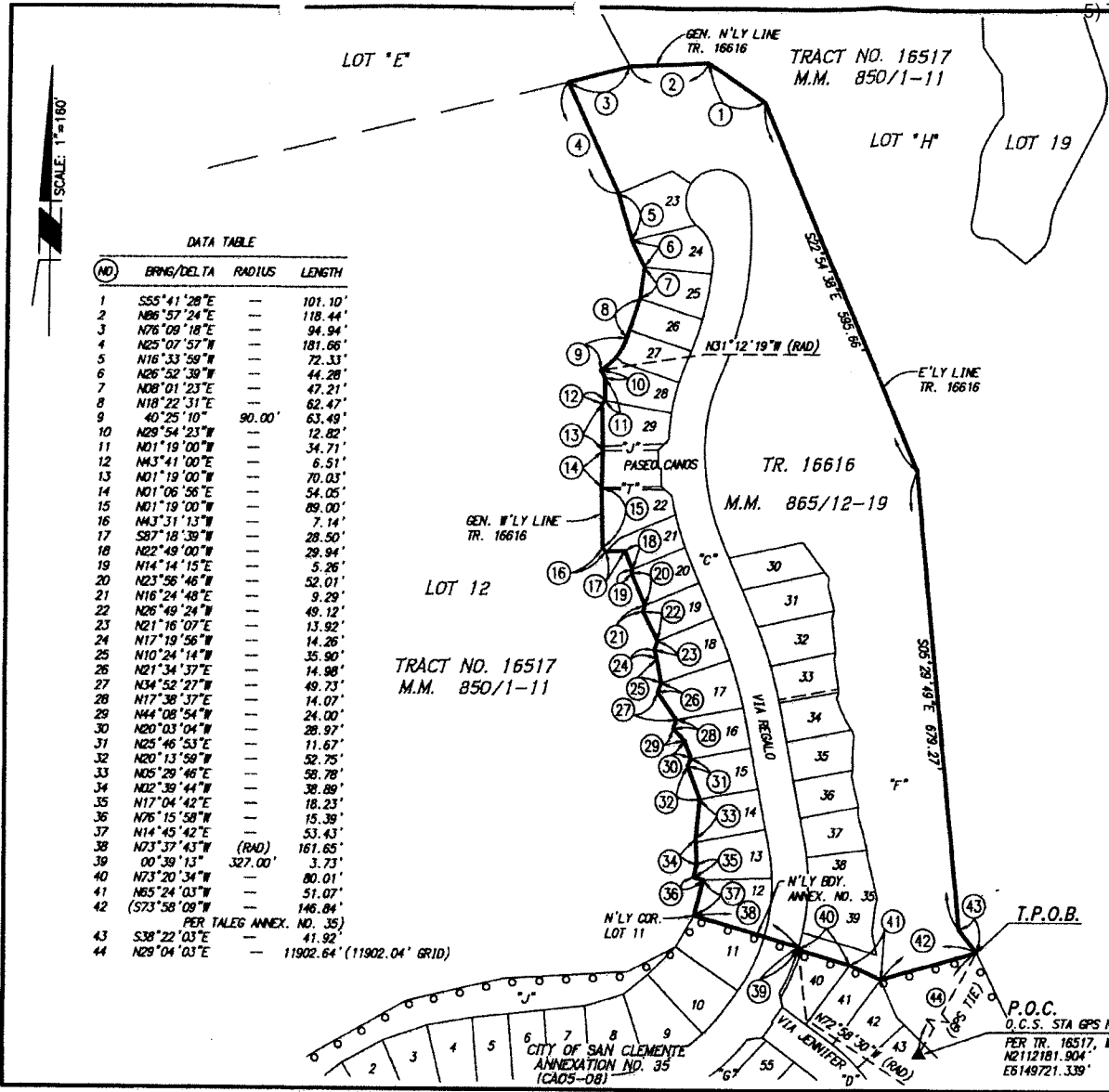
*Raymond L. Mathe*  
 RAYMOND L. MATHE, COUNTY SURVEYOR  
 L.S. 6185, EXPIRATION DATE MARCH 31, 2006



**EXHIBIT 'B'**  
 CA05-10  
 TALEGA ANNEXATION NO. 37  
 TO THE CITY OF SAN CLEMENTE

SHEET 1 OF 1 SHEET

**RBF** PLANNING & DESIGN & CONSTRUCTION  
 REGINA ALONSO PERRY  
 LICENSED PROFESSIONAL ENGINEER  
 CIVIL ENGINEER (0000-0007)  
 REV. MAY 2, 2005  
 FEBRUARY 28, 2005  
 J.N. 10-103698



**DATA TABLE**

NO	Bearing/Delta	RADIUS	LENGTH
1	S55°41'28"E	—	101.10'
2	N86°57'24"E	—	118.44'
3	N76°09'18"E	—	94.94'
4	N25°07'57"W	—	181.66'
5	N16°33'59"W	—	72.33'
6	N26°52'39"W	—	44.28'
7	N08°01'23"E	—	47.21'
8	N18°22'31"E	—	62.47'
9	40°25'10"	90.00'	63.49'
10	N29°54'23"W	—	12.82'
11	N01°19'00"W	—	34.71'
12	N43°41'00"E	—	6.51'
13	N01°19'00"W	—	70.03'
14	N01°06'56"E	—	54.05'
15	N01°19'00"W	—	89.00'
16	N43°31'13"W	—	7.14'
17	S87°18'39"W	—	28.50'
18	N22°49'00"W	—	29.94'
19	N14°14'15"E	—	5.26'
20	N23°56'46"W	—	52.01'
21	N16°24'48"E	—	9.29'
22	N26°49'24"W	—	49.12'
23	N21°16'07"E	—	13.92'
24	N17°19'56"W	—	14.26'
25	N10°24'14"W	—	35.90'
26	N21°34'37"E	—	14.98'
27	N34°52'27"W	—	49.73'
28	N17°38'37"E	—	14.07'
29	N44°08'54"W	—	24.00'
30	N20°03'04"W	—	28.97'
31	N25°46'53"E	—	11.67'
32	N20°13'59"W	—	52.75'
33	N05°29'46"E	—	58.78'
34	N02°39'44"W	—	38.89'
35	N17°04'42"E	—	18.23'
36	N76°15'58"W	—	15.39'
37	N14°45'42"E	—	53.43'
38	N03°37'43"W (RAD)	161.65'	3.73'
39	00°39'13"	327.00'	80.01'
40	N73°20'34"W	—	51.07'
41	N65°24'03"W	—	146.84'
42	(S73°58'09"W PER TALEG ANNEX. NO. 35)	—	41.92'
43	S38°22'03"E	—	11902.64' (11902.04' GRID)
44	N29°04'03"E	—	

**DATA TABLE**

(NO)	BPMS/Delta	RADIUS	LENGTH
1	N03°57'44"E	---	203.10'
2	S03°57'12"E	---	176.41'
3	N89°15'30"W	---	160.41'
4	N89°15'35"W	---	108.06'
5	S5°24'48"	360.00'	248.39'
6	S80°08'00"W	---	127.39'
7	07°25'41"	1200.00'	185.57'
8	N18°27'11"E	---	10537.05' (10536.52' GRID)



LOT 'E'  
TRACT NO. 16517  
M.M. 850/1-11

**LEGEND**

--- EXISTING CITY OF SAN CLEMENTE BOUNDARY PER ANNEXATION NO. 11, ORDINANCE NO. 414, APRIL 19, 1963  
--- ANNEXATION BOUNDARY.

**NOTE**

THIS ANNEXATION CONTAINS 25,484 ACRES.  
UNLESS OTHERWISE NOTED, ALL DISTANCES ON THIS MAP ARE GROUND MEASUREMENTS. TO OBTAIN THE GRID DISTANCE BASED ON THE CALIFORNIA COORDINATE SYSTEM, (CCS83) ZONE VI MAD 1983 (1981.35 EPOCH O.C.S. GPS ADJUSTMENT), MULTIPLY GROUND DISTANCE BY 0.99994960.

APN FOR: 708-041-06

PREPARED BY ME OR UNDER MY DIRECT SUPERVISION



*Gregory A. Helmer*  
GREGORY A. HELMER, L.S. 5134

THIS PROPOSAL DOES MEET THE APPROVAL OF THE ORANGE COUNTY SURVEYOR'S OFFICE

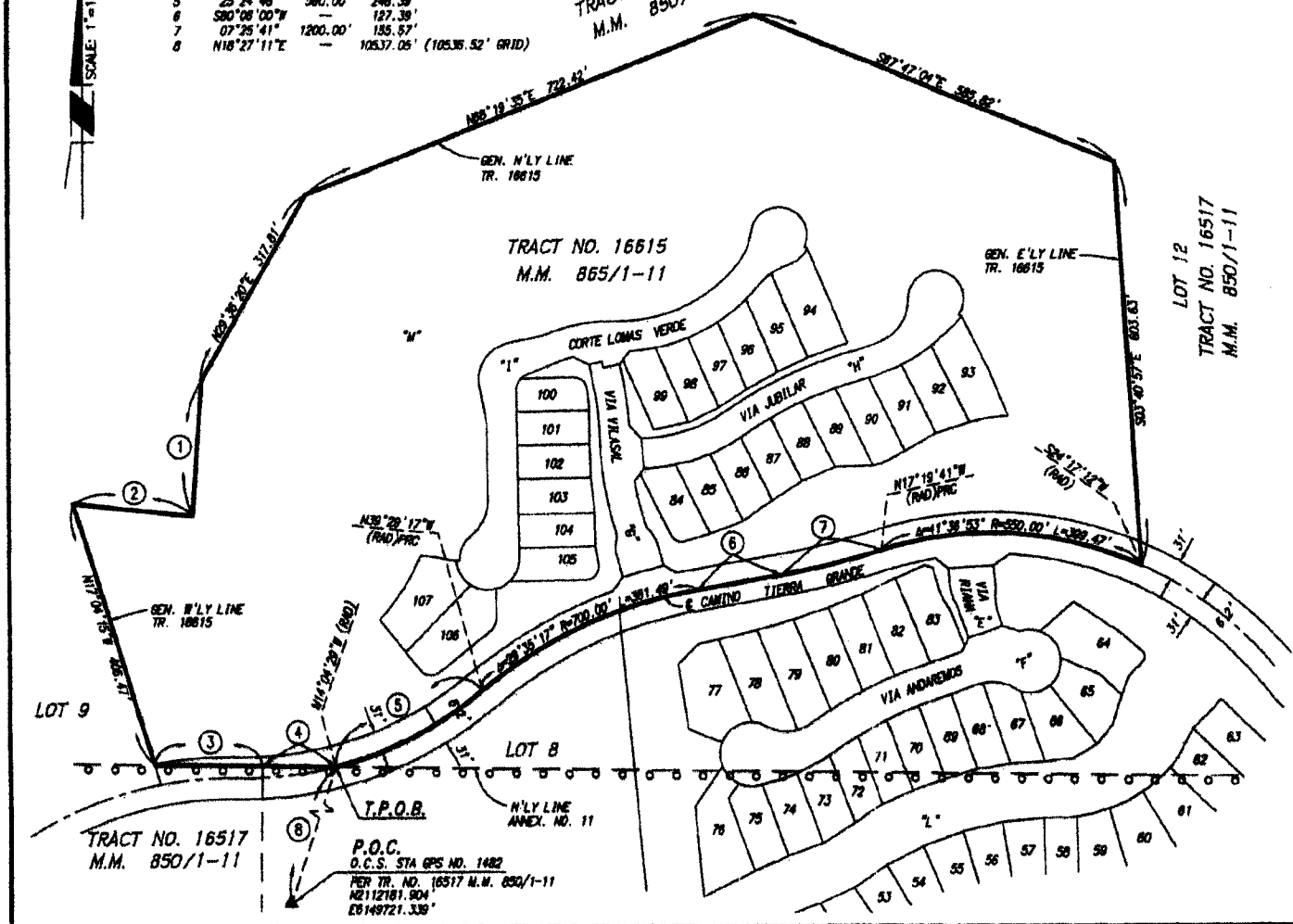
DATED THIS 25<sup>th</sup> DAY OF May, 2005

*Raymond L. Matve*  
RAYMOND L. MATVE, COUNTY SURVEYOR  
S/ 6185, EXPIRATION DATE MARCH 31, 2006



**EXHIBIT 'B'**  
CA05-06  
TALEGA ANNEXATION NO. 33  
TO THE CITY OF SAN CLEMENTE

SHEET 1 OF 1 SHEET



**LEGEND**

— — — — — EXISTING CITY OF SAN CLEMENTE BOUNDARY  
 PER ANNEXATION NO. 11, ORDINANCE NO. 414,  
 APRIL 19, 1963  
 — — — — — ANNEXATION BOUNDARY.

**NOTE**

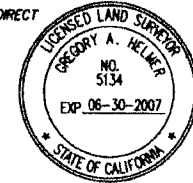
THIS ANNEXATION CONTAINS 6.165 ACRES.

UNLESS OTHERWISE NOTED, ALL DISTANCES ON THIS MAP ARE GROUND MEASUREMENTS. TO OBTAIN THE GRID DISTANCE BASED ON THE CALIFORNIA COORDINATE SYSTEM, (CCS83) ZONE VI MAD 1983 (1981.35 EPOCH O.C.S. GPS ADJUSTMENT), MULTIPLY GROUND DISTANCE BY 0.99994960.

APR 708-041-01

PREPARED BY ME OR UNDER MY DIRECT SUPERVISION

*Gregory A. Helmer*  
 GREGORY A. HELMER, L.S. 5134



THIS PROPOSAL DOES MEET THE APPROVAL OF THE ORANGE COUNTY SURVEYOR'S OFFICE.

DATED THIS 10<sup>th</sup> DAY OF OCTOBER, 2005

*Raymond L. Mathe*  
 RAYMOND L. MATHE, COUNTY SURVEYOR  
 L.S. 6185, EXPIRATION DATE MARCH 31, 2006



**EXHIBIT 'B'**  
 CA05-04  
 TALEGA ANNEXATION NO. 31  
 TO THE CITY OF SAN CLEMENTE

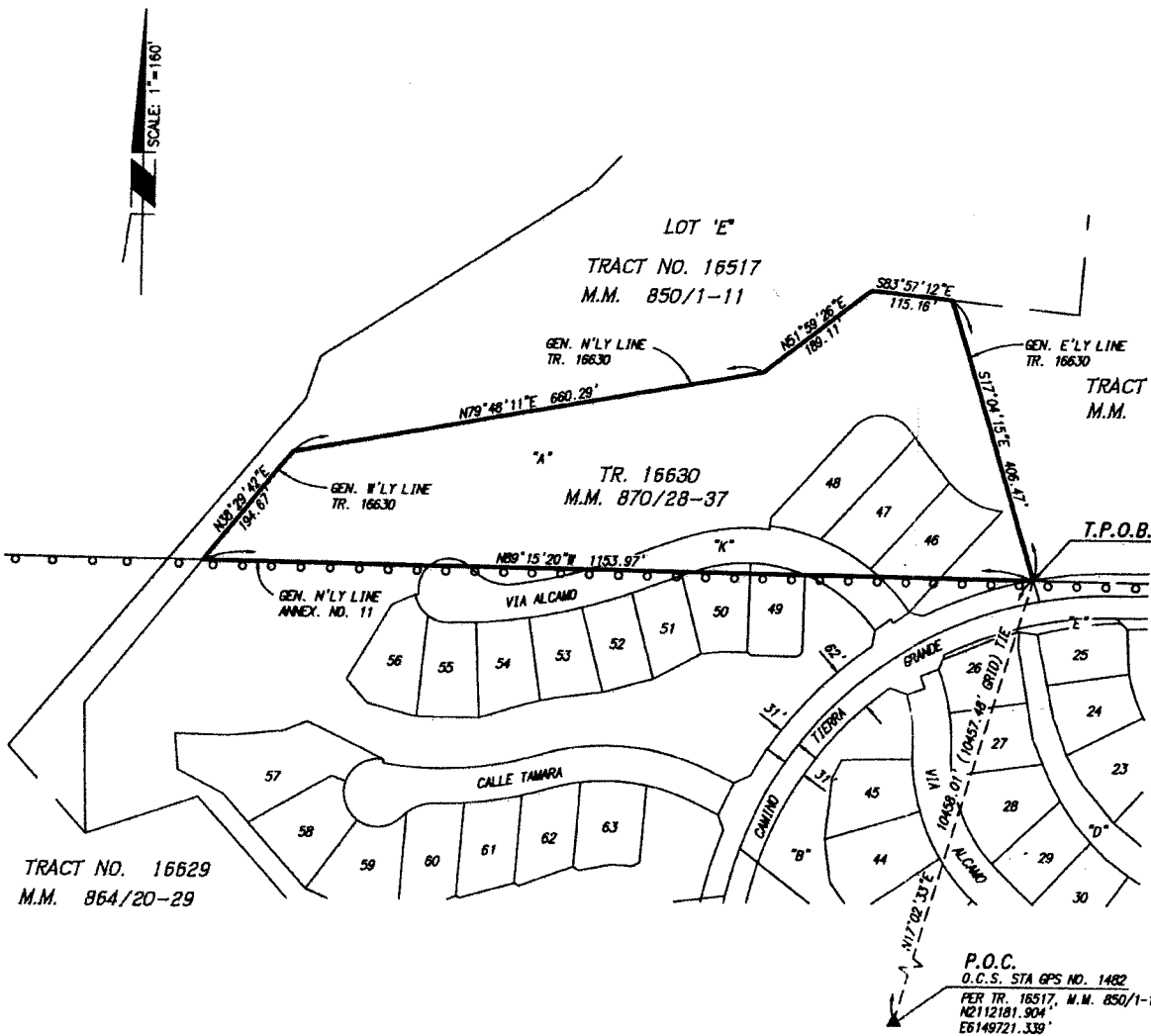
SHEET 1 OF 1 SHEET

**RBF** CONSULTING  
 REV. OCTOBER 11, 2005  
 MARCH 30, 2005

PLANNING • DESIGN • CONSTRUCTION

1076 ALICIA PARKWAY  
 ORANGE, CALIFORNIA 92667-0907  
 949.472.0000 • FAX 949.472.0001 • WWW.RBF.COM

J.N. 10-103698



SHEET 1 OF 3 SHEETS

**EXHIBIT "B"**  
**ANNEXATION NO. RO 05-60 TO THE CITY OF HUNTINGTON BEACH**  
**( BRIGHTWATER - PHASE 1 )**

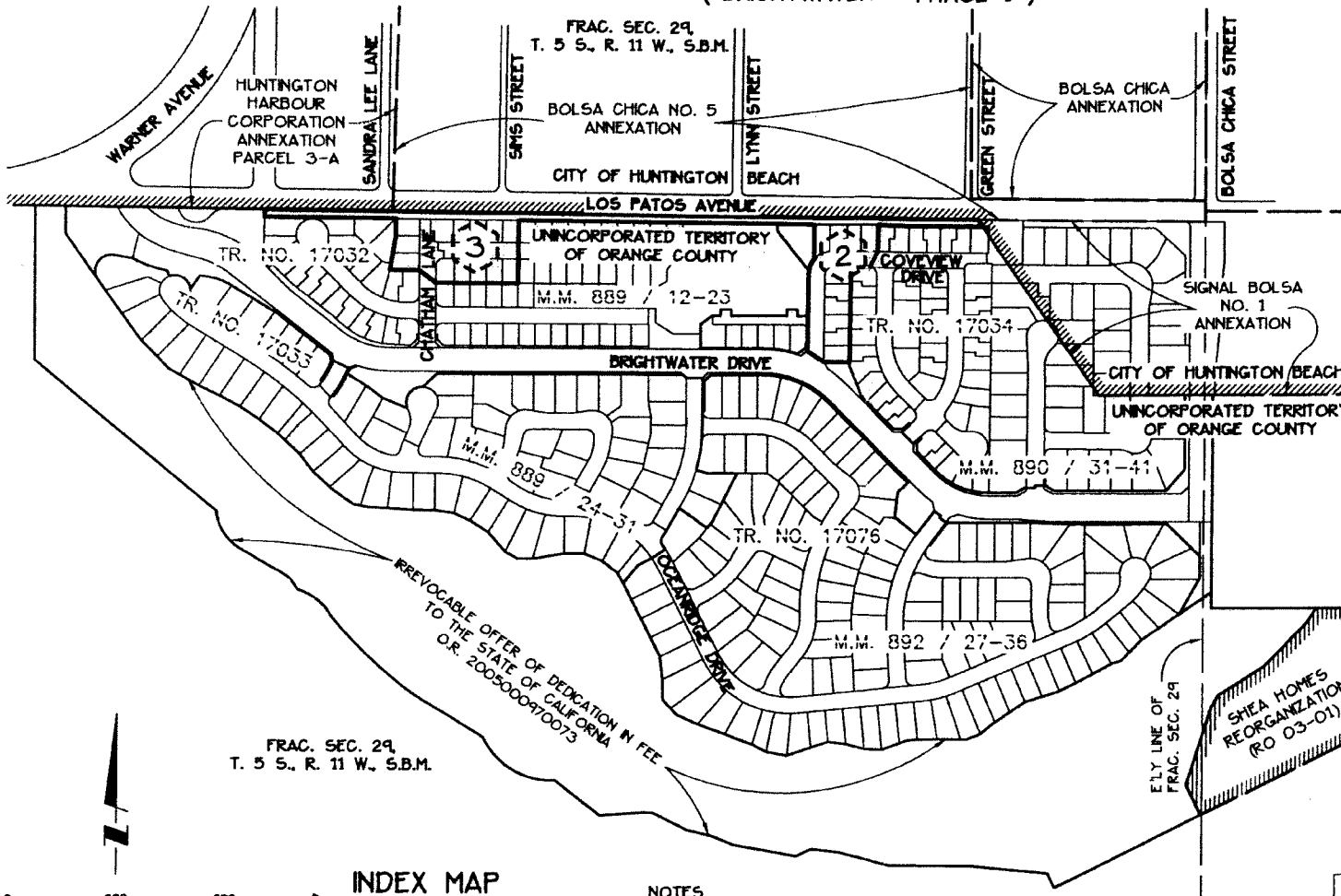
**SURVEYOR'S STATEMENT**

THIS DOCUMENT WAS PREPARED BY ME OR UNDER MY DIRECTION.  
 DATED THIS 11th DAY OF October, 2007.  
*James O. Steines*  
 JAMES O. STEINES, P.L.S. 6086  
 REGISTRATION EXPIRES 12/31/07



**COUNTY SURVEYOR'S STATEMENT**

THIS PROPOSAL DOES MEET THE APPROVAL OF THE ORANGE COUNTY SURVEYOR'S OFFICE.  
 DATED THIS 22nd DAY OF OCTOBER, 2007.  
 BY: *Raymond L. Mathe* DEPUTY  
 RAYMOND L. MATHE, L.S. 6185  
 EXPIRATION DATE 3/31/08  
 COUNTY SURVEYOR



**LEGEND**

- BOUNDARY OF ANNEXATION NO. RO 05-60 (BRIGHTWATER - PHASE 1)
- EXISTING CITY OF HUNTINGTON BEACH BOUNDARY

FRAC. SEC. 29,  
T. 5 S., R. 11 W., S.B.M.

**INDEX MAP**



INDICATES SHEET NO.

**NOTES**

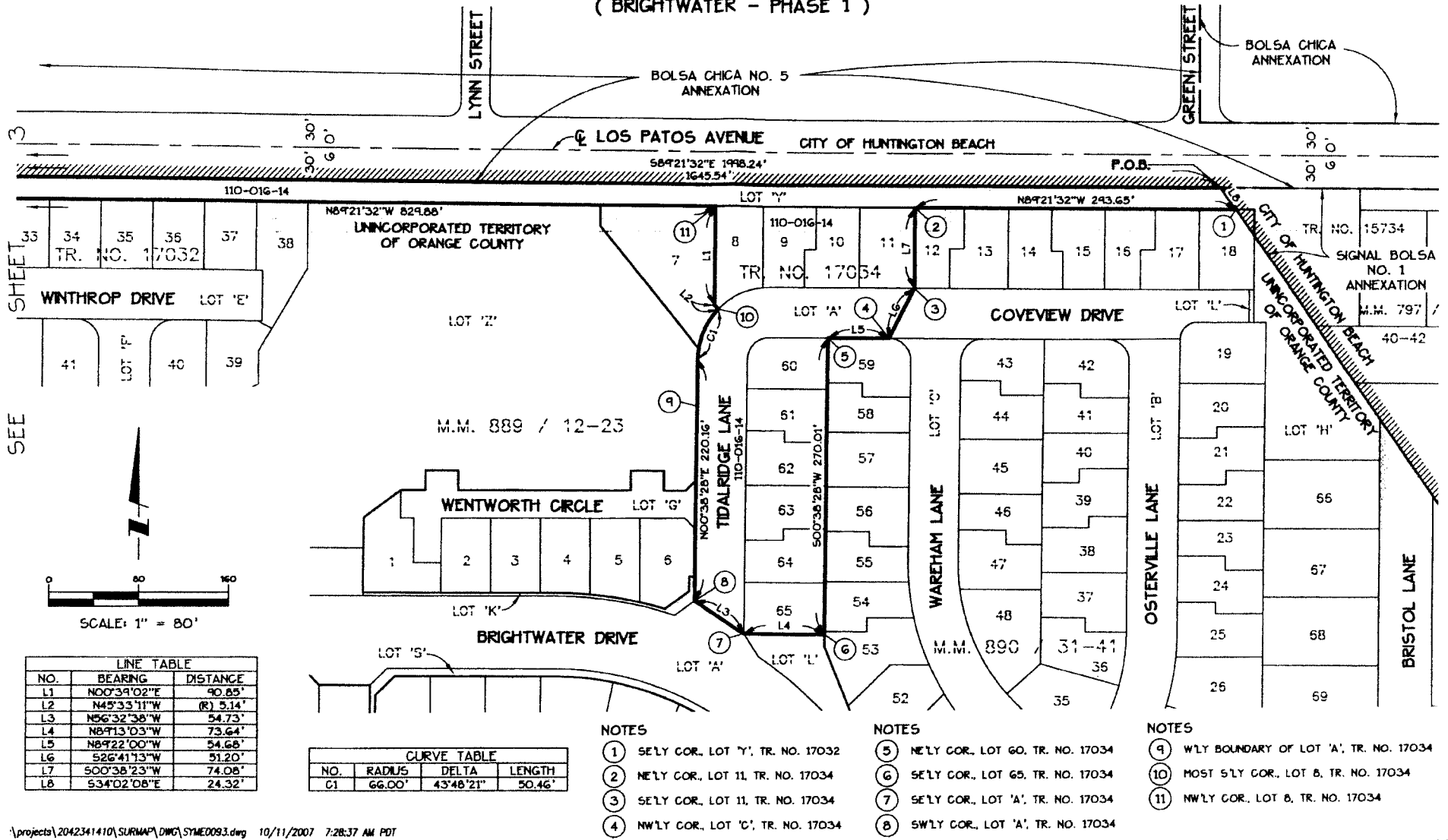
THIS ANNEXATION CONTAINS 3.495 ACRES +/-.  
 101-016-14 = ASSESSORS PARCEL NUMBER (TYPICAL)

**STANTEC CONSULTING INC.**  
 19 TECHNOLOGY DRIVE  
 IRVINE, CA 92618  
 949.923.6000

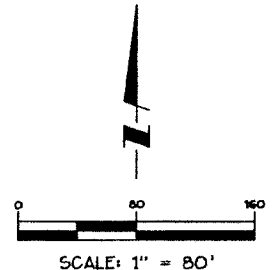
J.N. 2042 341410 | DATE: 10/11/07

SHEET 2 OF 3 SHEETS

**EXHIBIT "B"**  
ANNEXATION NO. RO 05-60 TO THE CITY OF HUNTINGTON BEACH  
( BRIGHTWATER - PHASE 1 )



SEE SHEET



LINE TABLE		
NO.	BEARING	DISTANCE
L1	N00°39'02"E	90.65'
L2	N45°33'11"W	(R) 5.14'
L3	N56°32'38"W	54.73'
L4	N8°13'03"W	73.64'
L5	N8°22'00"W	54.68'
L6	S26°41'13"W	51.20'
L7	S00°38'23"W	74.08'
L8	S34°02'08"E	24.32'

CURVE TABLE			
NO.	RADIUS	DELTA	LENGTH
C1	66.00'	43°48'21"	50.46'

- NOTES**
- ① SE'LY COR., LOT 'Y', TR. NO. 17032
  - ② NE'LY COR., LOT 11, TR. NO. 17034
  - ③ SE'LY COR., LOT 11, TR. NO. 17034
  - ④ NW'LY COR., LOT 'C', TR. NO. 17034

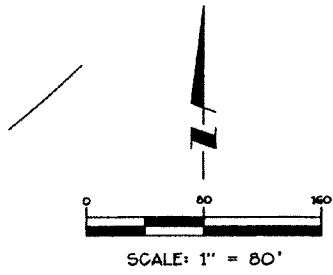
- NOTES**
- ⑤ NE'LY COR., LOT 60, TR. NO. 17034
  - ⑥ SE'LY COR., LOT 65, TR. NO. 17034
  - ⑦ SE'LY COR., LOT 'A', TR. NO. 17034
  - ⑧ SW'LY COR., LOT 'A', TR. NO. 17034

- NOTES**
- ⑨ W'LY BOUNDARY OF LOT 'A', TR. NO. 17034
  - ⑩ MOST S'LY COR., LOT 8, TR. NO. 17034
  - ⑪ NW'LY COR., LOT 8, TR. NO. 17034

SHEET 3 OF 3 SHEETS

# EXHIBIT "B"

## ANNEXATION NO. RO 05-60 TO THE CITY OF HUNTINGTON BEACH ( BRIGHTWATER - PHASE 1 )

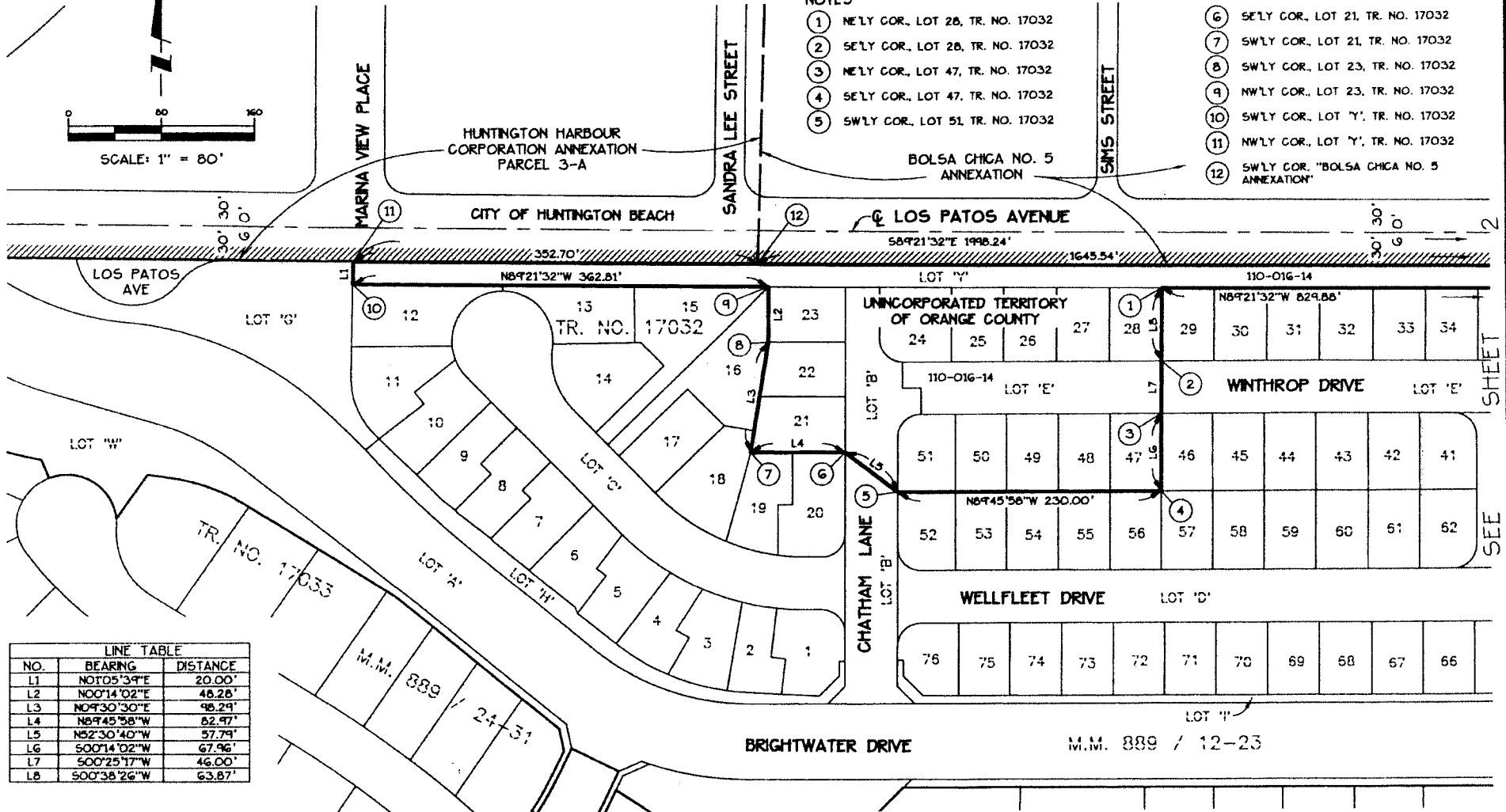


**NOTES**

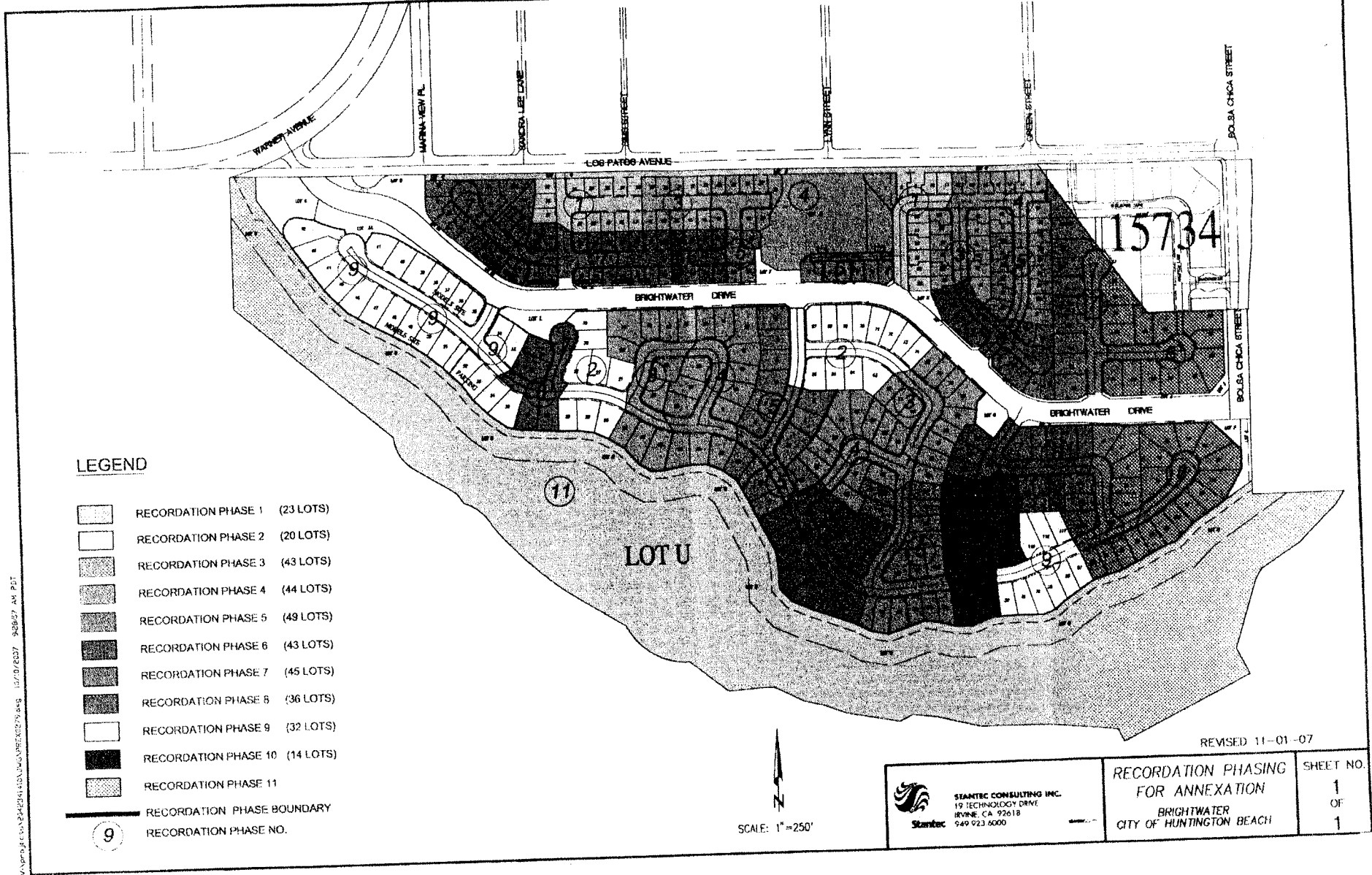
- ① NE'LY COR., LOT 28, TR. NO. 17032
- ② SE'LY COR., LOT 28, TR. NO. 17032
- ③ NE'LY COR., LOT 47, TR. NO. 17032
- ④ SE'LY COR., LOT 47, TR. NO. 17032
- ⑤ SW'LY COR., LOT 51, TR. NO. 17032

**NOTES**

- ⑥ SE'LY COR., LOT 21, TR. NO. 17032
- ⑦ SW'LY COR., LOT 21, TR. NO. 17032
- ⑧ SW'LY COR., LOT 23, TR. NO. 17032
- ⑨ NW'LY COR., LOT 23, TR. NO. 17032
- ⑩ SW'LY COR., LOT 'Y', TR. NO. 17032
- ⑪ NW'LY COR., LOT 'Y', TR. NO. 17032
- ⑫ SW'LY COR., "BOLSA CHICA NO. 5 ANNEXATION"



LINE TABLE		
NO.	BEARING	DISTANCE
L1	N0°05'39"E	20.00'
L2	N00°14'02"E	48.28'
L3	N09°30'30"E	98.29'
L4	N8°45'58"W	82.97'
L5	N52°30'40"W	57.74'
L6	S00°14'02"W	67.96'
L7	S00°25'17"W	46.00'
L8	S00°38'26"W	63.87'



V:\projects\11242424\11242424.dwg 11/10/2007 9:58:57 AM PBT

**EXHIBIT B**