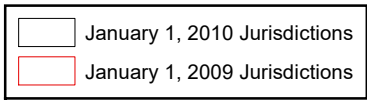


Orange County Boundary and Annexation Report 2009-2010 (January 1)



1. Lower Rosan Ranch Reorganization to San Juan Capistrano (RO 08-02)



Source: OC Geomatics, 2009 & 2010
 Note: Coastal boundary represents mean high tide circa 2015. Coastal boundary approximated by CDR GIS staff.

Orange County Boundary and Annexation Report 2009-2010

Jurisdiction	Total Area (Square Miles)*		Area Change 2009-2010**	Annexation Reference #
	January 1, 2009	January 1, 2010		
Aliso Viejo	6.921	6.921	0	
Anaheim	50.872	50.872	0	
Brea	12.221	12.221	0	
Buena Park	10.550	10.550	0	
Costa Mesa	15.827	15.827	0	
Cypress	6.622	6.622	0	
Dana Point	6.604	6.602	-0.0018	1
Fountain Valley	9.048	9.048	0	
Fullerton	22.447	22.447	0	
Garden Grove	17.923	17.923	0	
Huntington Beach	27.402	27.402	0	
Irvine	65.969	65.969	0	
Laguna Beach	8.932	8.932	0	
Laguna Hills	6.647	6.647	0	
Laguna Niguel	14.787	14.787	0	
Laguna Woods	3.306	3.306	0	
La Habra	7.360	7.360	0	
Lake Forest	16.785	16.785	0	
La Palma	1.804	1.804	0	
Los Alamitos	4.089	4.089	0	
Mission Viejo	17.933	17.933	0	
Newport Beach	25.984	25.984	0	
Orange	25.783	25.783	0	
Placentia	6.621	6.621	0	
Rancho Santa Margarita	12.937	12.937	0	
San Clemente	18.357	18.357	0	
San Juan Capistrano	14.199	14.201	0.0018	1
Santa Ana	27.352	27.352	0	
Seal Beach	11.991	11.991	0	
Stanton	3.087	3.087	0	
Tustin	11.137	11.137	0	
Villa Park	2.078	2.078	0	
Westminster	10.070	10.070	0	
Yorba Linda	19.867	19.867	0	
Unincorporated	276.404	276.404	0	
Orange County	799.920	799.920	0	

Source: O.C. Geomatics, 2009 & 2010

*Area calculated in ArcGIS by CDR.

**Annual area change totals may not match detailed annexation information due to rounding.

Detailed Annexation List:

- 1) Lower Rosan Ranch Reorganization (RO 08-02)
 Effective: 10/13/2009
 From Dana Point to San Juan Capistrano
 Uninhabited
 1.161 acres (0.0018 sq. miles)

Notes:

Benchmark 2015.

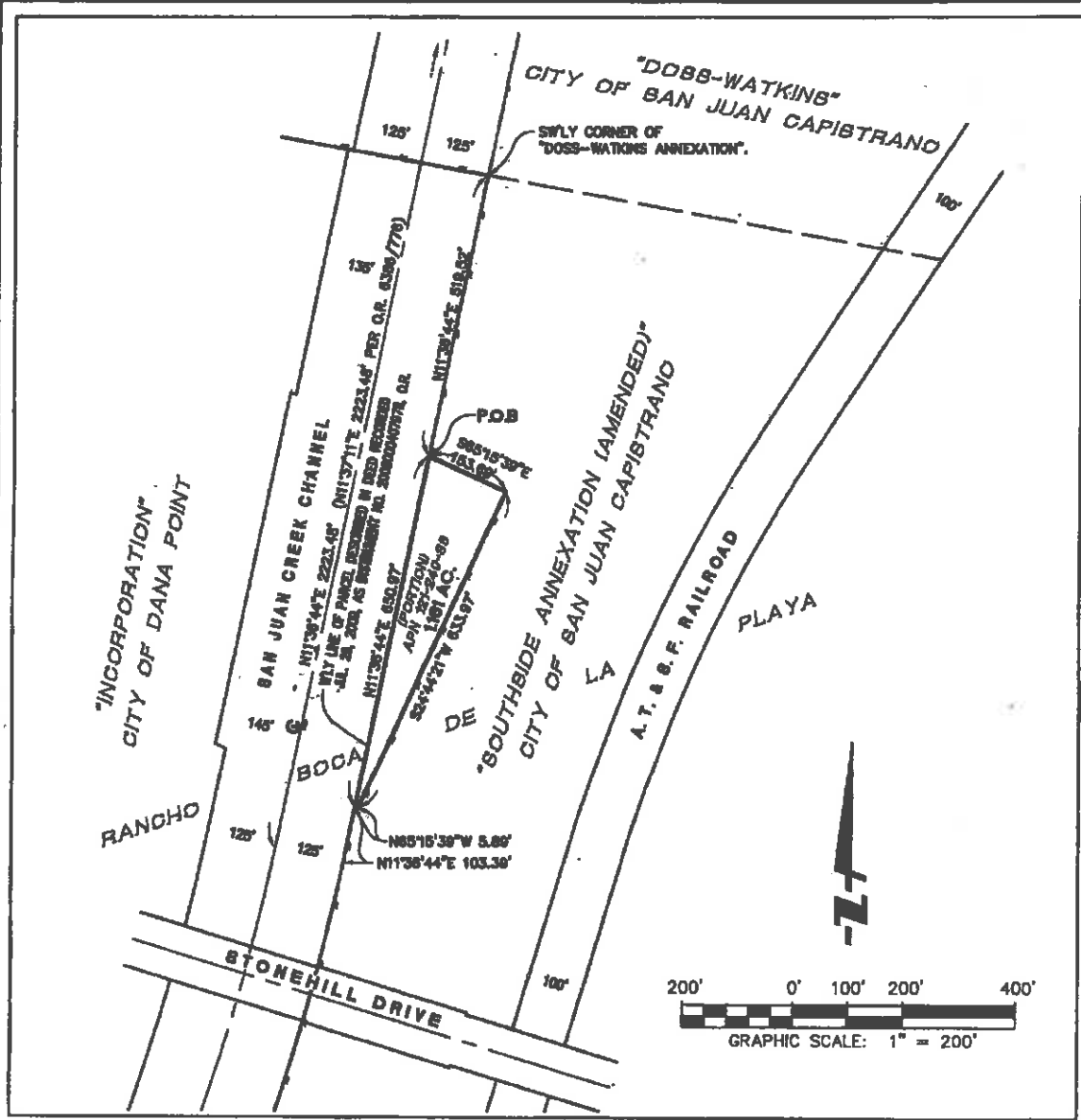
Some jurisdictions' legal boundary extends three miles off the coast.

A fixed boundary line at the coast was created in November 2014 based on high-resolution county-wide aerial imagery that was captured on June 19, 2013, to approximate the ocean waterline and to eliminate artificial land area changes to jurisdictions adjacent to the Orange County coast. This coast line does not define any vertical datum such as mean high tide, mean sea level, or mean lower low tide. This reference line was developed through a collaboration of OC Public Works, OC LAFCO, and CDR; it has no legal value; and its purpose is for CDR's use in reporting population density and jurisdictional annexations.

For official legal boundaries, contact the County of Orange Surveyor's office <http://ocpublicworks.com/survey/>

EXHIBIT "B"
 REORGANIZATION No. RO 08-02
 DETACHMENT FROM THE CITY OF DANA POINT AND
 ANNEXATION TO THE CITY OF SAN JUAN CAPISTRANO

SHEET 1 OF 1



LEGEND:

- EXISTING COMMON BOUNDARY LINE BETWEEN THE CITIES OF DANA POINT AND SAN JUAN CAPISTRANO.
- AREA OF REORGANIZATION

CONTAINING 1.181 ACRES, MORE OR LESS.

SURVEYOR'S STATEMENT:

THIS PROPOSAL WAS PREPARED BY ME OR UNDER MY DIRECTION

DATED THIS 15th DAY OF August, 2008.

JERRY L. USELSON
 L.S. 5347, LICENSE EXPIRATION DATE 12/31/08



THIS DOCUMENT DOES MEET THE APPROVAL OF THE ORANGE COUNTY SURVEYOR'S OFFICE.

DATED THIS 15th DAY OF August, 2008.

BY:
 RAYMOND C. DAVIS, COUNTY SURVEYOR
 L.S. 6185, MY LICENSE EXPIRES 03/31/10



FUSCOE
 ENGINEERS
 14798 Van Ness Avenue, Suite 100, San Francisco, California 94140
 Tel: 415.474.1940 • Fax: 415.474.3215 • www.fuscoe.com