

# Orange County Boundary and Annexation Report 2012-2013 (January 1)



1. County Boundary Reorganization for the City of Seal Beach (RO 11-03)
2. County Boundary Reorganization for the City of Los Alamitos (RO 11-02)
3. Kermore Island Annexation to the City of Stanton (IA 12-03)

	January 1, 2013 Jurisdictions
	January 1, 2012 Jurisdictions

Source: OC Geomatics, 2012 & 2013  
 Note: Coastal boundary represents mean high tide circa 2015. Coastal boundary approximated by CDR GIS staff.

**Orange County Boundary and Annexation Report 2012-2013**

Jurisdiction	Total Area (Square Miles)*		Area Change 2012-2013**	Annexation Reference #
	January 1, 2012	January 1, 2013		
Aliso Viejo	6.921	6.921	0	
Anaheim	50.872	50.872	0	
Brea	12.221	12.221	0	
Buena Park	10.550	10.550	0	
Costa Mesa	15.827	15.827	0	
Cypress	6.622	6.622	0	
Dana Point	6.602	6.602	0	
Fountain Valley	9.065	9.065	0	
Fullerton	22.447	22.447	0	
Garden Grove	17.923	17.923	0	
Huntington Beach	27.612	27.612	0	
Irvine	65.969	65.969	0	
Laguna Beach	8.932	8.932	0	
Laguna Hills	6.647	6.647	0	
Laguna Niguel	14.787	14.787	0	
Laguna Woods	3.306	3.306	0	
La Habra	7.369	7.369	0	
Lake Forest	16.785	16.785	0	
La Palma	1.804	1.804	0	
Los Alamitos	4.089	4.091	0.002	2
Mission Viejo	17.933	17.933	0	
Newport Beach	25.984	25.984	0	
Orange	25.783	25.783	0	
Placentia	6.621	6.621	0	
Rancho Santa Margarita	12.937	12.937	0	
San Clemente	18.357	18.357	0	
San Juan Capistrano	14.407	14.407	0	
Santa Ana	27.352	27.352	0	
Seal Beach	11.991	11.880	-0.111	1
Stanton	3.087	3.105	0.018	3
Tustin	11.137	11.137	0	
Villa Park	2.078	2.078	0	
Westminster	10.070	10.070	0	
Yorba Linda	19.867	19.867	0	
Unincorporated	275.965	275.947	-0.018	3
<b>Orange County</b>	<b>799.920</b>	<b>799.811</b>	<b>-0.109</b>	<b>1, 2</b>

Source: O.C. Geomatics, 2012 & 2013

\*Area calculated in ArcGIS by CDR.

\*\*Annual area change totals may not match detailed annexation information due to rounding.

**Detailed Annexation List:**

- 1) County Boundary Reorganization for the City of Seal Beach (RO 11-03)  
Effective: 2/16/2012  
From Seal Beach to Long Beach (Los Angeles County)  
Uninhabited  
71.24 acres (0.11131 sq. miles)
  
- 2) County Boundary Reorganization for the City of Los Alamitos (RO 11-02)  
Effective: 2/16/2012  
From Long Beach (Los Angeles County) to Los Alamitos  
Uninhabited (neighborhood park)  
1.28 acres (0.002 sq. miles)
  
- 3) Kermore Island Annexations to the City of Stanton (IA 12-03)  
Effective: 6/11/2012  
From Unincorporated Orange County to Stanton  
Inhabited: SFD & MF  
11.47 acres (0.01792 sq. miles)

**Notes:**

Benchmark 2015.

Some jurisdictions' legal boundary extends three miles off the coast.

A fixed boundary line at the coast was created in November 2014 based on high-resolution county-wide aerial imagery that was captured on June 19, 2013, to approximate the ocean waterline and to eliminate artificial land area changes to jurisdictions adjacent to the Orange County coast. This coast line does not define any vertical datum such as mean high tide, mean sea level, or mean lower low tide.

This reference line was developed through a collaboration of OC Public Works, OC LAFCO, and CDR; it has no legal value; and its purpose is for CDR's use in reporting population density and jurisdictional annexations.

For official legal boundaries, contact the County of Orange Surveyor's office

<http://ocpublicworks.com/survey/>

## EXHIBIT "B"

### COUNTY BOUNDARY ADJUSTMENT AREA 1 FROM ORANGE COUNTY TO LOS ANGELES COUNTY

COUNTY BOUNDARY REORGANIZATION FOR THE  
 CITY OF SEAL BEACH (NO 11-03)

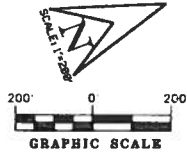
CITY OF LONG BEACH REORGANIZATION NO. 2011-13  
 (COUNTY BOUNDARY ADJUSTMENT)

DETACH FROM

ANNEX TO

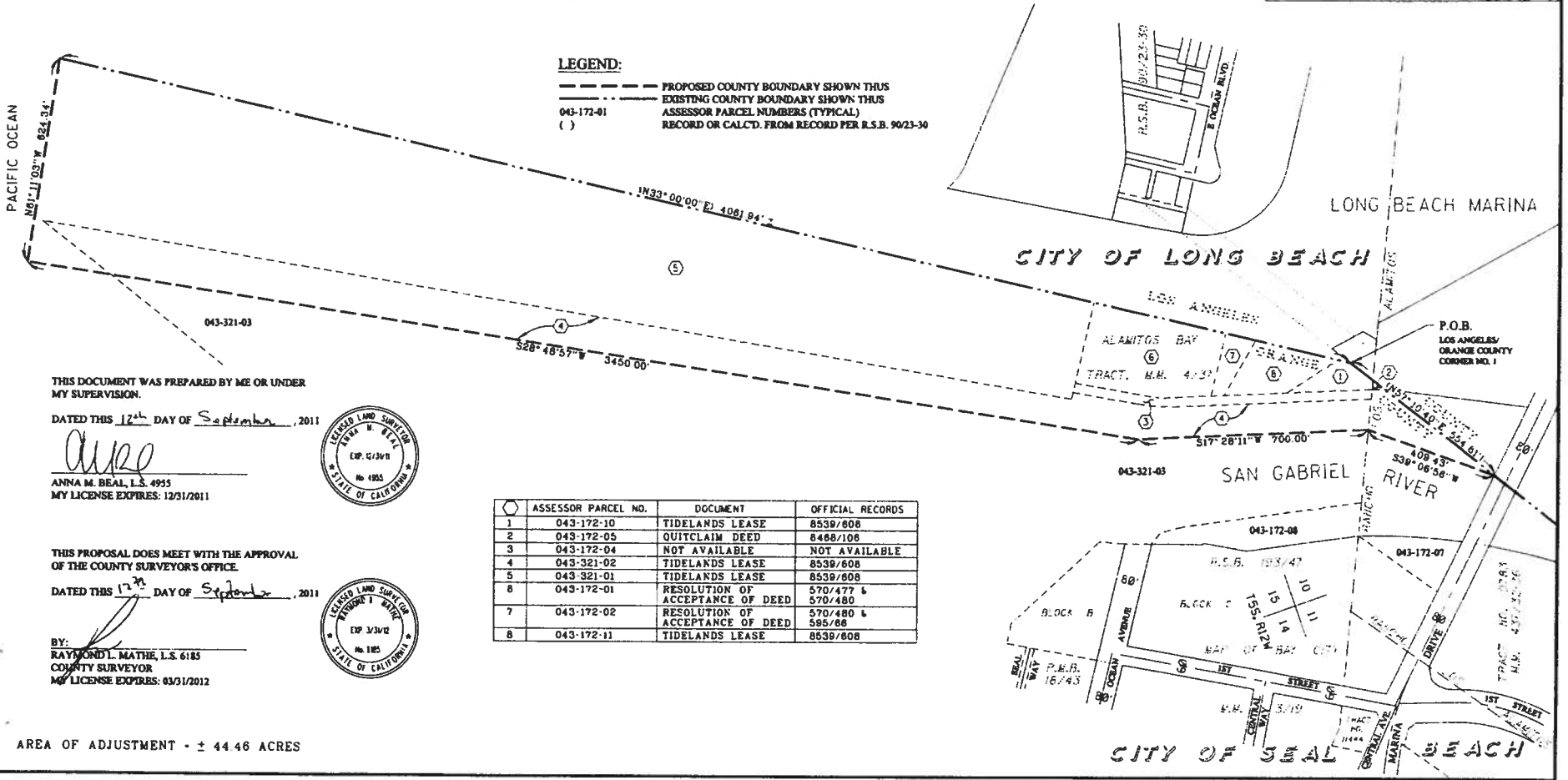
CITY OF SEAL BEACH  
 ORANGE COUNTY VECTOR CONTROL DISTRICT  
 ORANGE COUNTY CEMETERY DISTRICT  
 ORANGE COUNTY PARKS (CSA 26)  
 ORANGE COUNTY SANITATION DISTRICT  
 ORANGE COUNTY WATER DISTRICT  
 MUNICIPAL WATER DISTRICT OF ORANGE COUNTY

CITY OF LONG BEACH  
 LOS ANGELES COUNTY SANITATION DISTRICT NO. 3  
 WATER REPLENISHMENT DISTRICT OF SOUTHERN CALIFORNIA



**LEGEND:**

- PROPOSED COUNTY BOUNDARY SHOWN THUS
- - - EXISTING COUNTY BOUNDARY SHOWN THUS
- 043-172-01 ASSESSOR PARCEL NUMBERS (TYPICAL)
- ( ) RECORD OR CALCD. FROM RECORD PER R.S.B. 9023-30



THIS DOCUMENT WAS PREPARED BY ME OR UNDER MY SUPERVISION.

DATED THIS 12<sup>th</sup> DAY OF September, 2011

*Anna M. Beal*  
 ANNA M. BEAL, L.S. 4955  
 MY LICENSE EXPIRES: 12/31/2011



THIS PROPOSAL DOES MEET WITH THE APPROVAL OF THE COUNTY SURVEYOR'S OFFICE.

DATED THIS 17<sup>th</sup> DAY OF September, 2011

BY:  
 RAYMOND L. MATHIE, L.S. 6185  
 COUNTY SURVEYOR  
 MY LICENSE EXPIRES: 03/31/2012



ASSESSOR PARCEL NO.	DOCUMENT	OFFICIAL RECORDS
1 043-172-10	TIDELANDS LEASE	8539/808
2 043-172-05	QUITCLAIM DEED	8468/108
3 043-172-04	NOT AVAILABLE	NOT AVAILABLE
4 043-321-02	TIDELANDS LEASE	8539/608
5 043-321-01	TIDELANDS LEASE	8539/608
8 043-172-01	RESOLUTION OF ACCEPTANCE OF DEED	570/477 & 570/480
7 043-172-02	RESOLUTION OF ACCEPTANCE OF DEED	570/480 & 585/68
8 043-172-11	TIDELANDS LEASE	8539/608

AREA OF ADJUSTMENT - ± 44.46 ACRES

Exhibit B

THIS DOCUMENT WAS PREPARED BY ME OR UNDER MY SUPERVISION.

DATED THIS 24 DAY OF August, 2011

*Anna M. Heil*  
 ANNA M. HEIL, L.S. 4955  
 MY LICENSE EXPIRES: 12/31/2011



THIS PROPOSAL DOES MEET WITH THE APPROVAL OF THE COUNTY SURVEYOR'S OFFICE.

DATED THIS 24<sup>th</sup> DAY OF August, 2011

BY:  
 RAYMOND LEMATHE, L.S. 6185  
 COUNTY SURVEYOR  
 MY LICENSE EXPIRES: 03/31/2012



## EXHIBIT "B"

### COUNTY BOUNDARY ADJUSTMENT AREA 4 FROM ORANGE COUNTY TO LOS ANGELES COUNTY

COUNTY BOUNDARY REORGANIZATION FOR THE CITY OF SEAL BEACH (RO 11-03)

CITY OF LONG BEACH REORGANIZATION NO. 2011-13 (COUNTY BOUNDARY ADJUSTMENT)

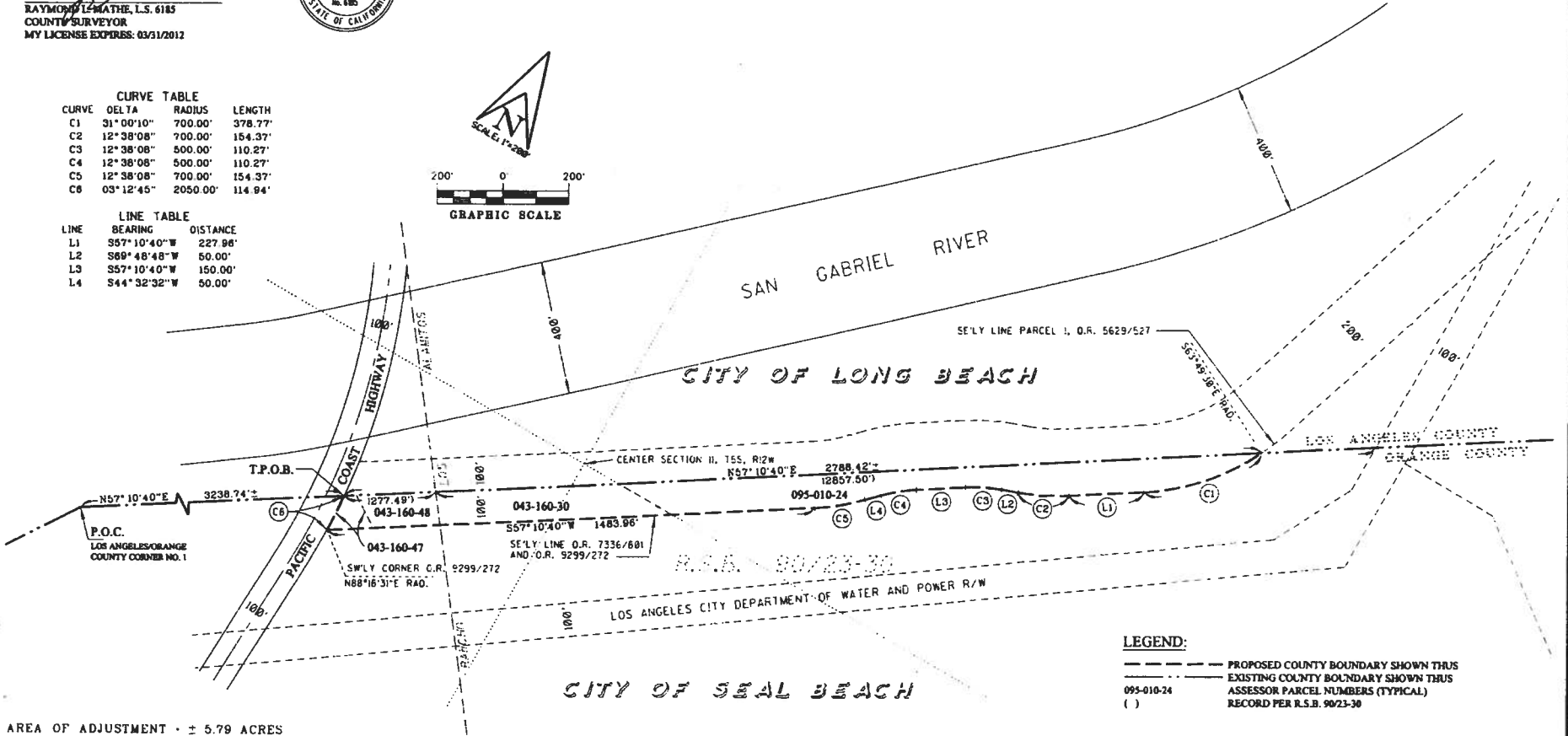
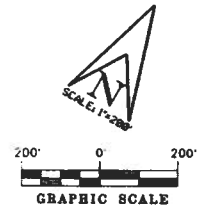
**DETACH FROM**  
 CITY OF SEAL BEACH  
 ORANGE COUNTY VECTOR CONTROL DISTRICT  
 ORANGE COUNTY CEMETERY DISTRICT  
 ORANGE COUNTY PARKS (CSA 26)  
 ORANGE COUNTY SANITATION DISTRICT  
 ORANGE COUNTY WATER DISTRICT  
 MUNICIPAL WATER DISTRICT OF ORANGE COUNTY

**ANNEX TO**  
 CITY OF LONG BEACH  
 GREATER LOS ANGELES COUNTY VECTOR CONTROL DISTRICT  
 LOS ANGELES COUNTY SANITATION DISTRICT NO. 3  
 WATER REPLENISHMENT DISTRICT OF SOUTHERN CALIFORNIA



CURVE TABLE			
CURVE	DELTA	RADIUS	LENGTH
C1	31°00'10"	700.00'	378.77'
C2	12°38'08"	700.00'	154.37'
C3	12°38'08"	500.00'	110.27'
C4	12°38'08"	500.00'	110.27'
C5	12°38'08"	700.00'	154.37'
C8	05°12'45"	2050.00'	114.94'

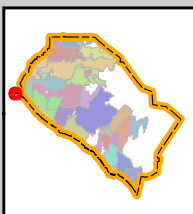
LINE TABLE		
LINE	BEARING	DISTANCE
L1	S57°10'40"W	227.96'
L2	S89°48'48"W	50.00'
L3	S57°10'40"W	150.00'
L4	S44°32'32"W	50.00'



AREA OF ADJUSTMENT ± 5.79 ACRES

**LEGEND:**  
 - - - - - PROPOSED COUNTY BOUNDARY SHOWN THUS  
 \_\_\_\_\_ EXISTING COUNTY BOUNDARY SHOWN THUS  
 095-010-24 ASSESSOR PARCEL NUMBERS (TYPICAL)  
 ( ) RECORD PER R.S.B. 90/23-30

## Exhibit 2 - Area 1 Vicinity Map



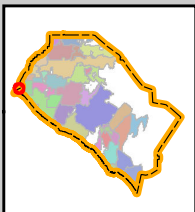
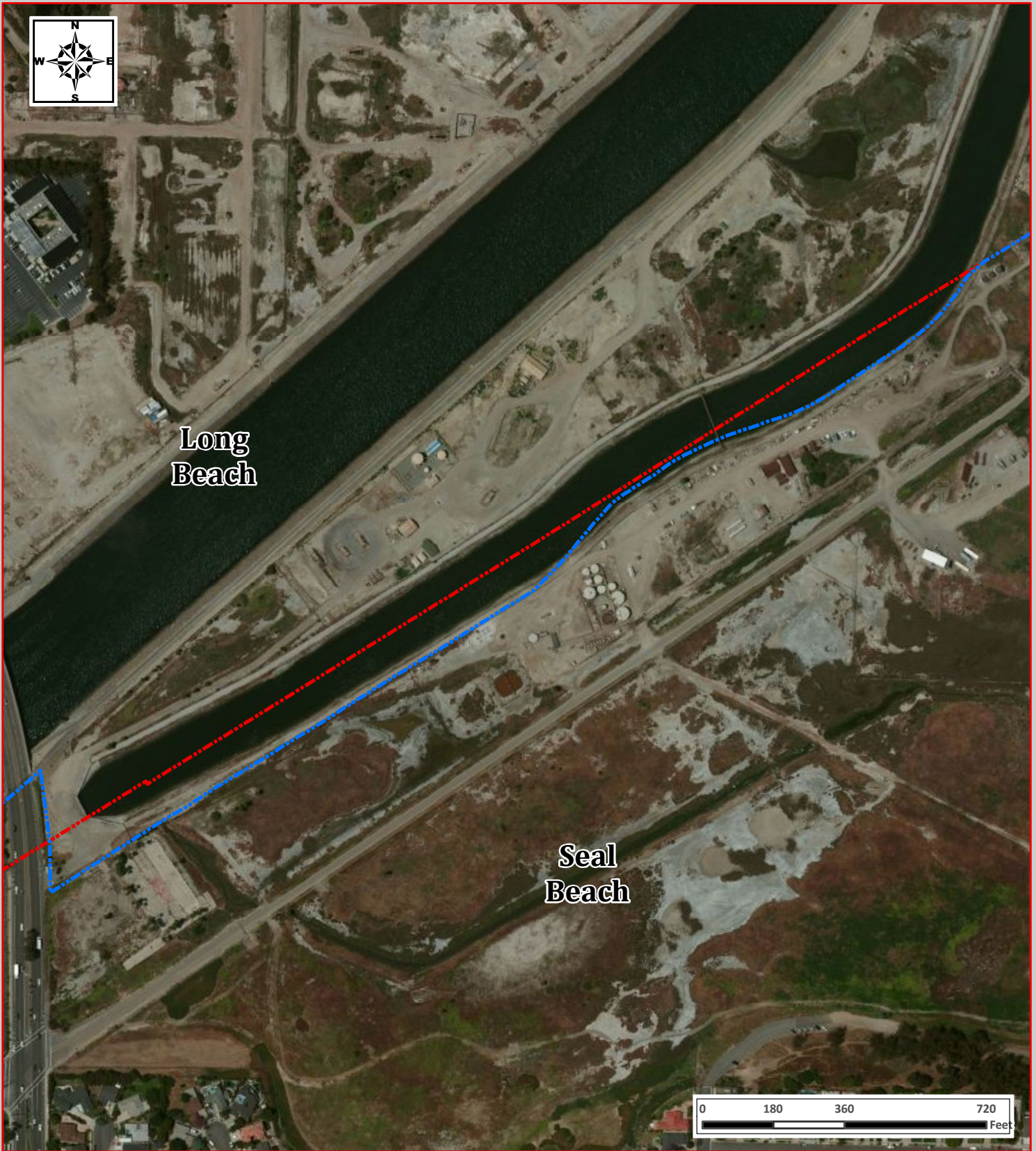
### County Boundary Adjustment for the City of Seal Beach (RO 11-03)

*Detachment from the City of Seal Beach, OC Vector Control District, OC Cemetery District, OC Parks (CSA 26), Orange County Sanitation District, Orange County Water District, and the Municipal Water District of Orange County*

#### Legend



- Proposed Boundary
- Existing Boundary
- Area 1 Parcels

# Exhibit 3 - Area 4 Vicinity Map

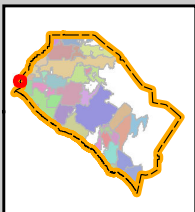
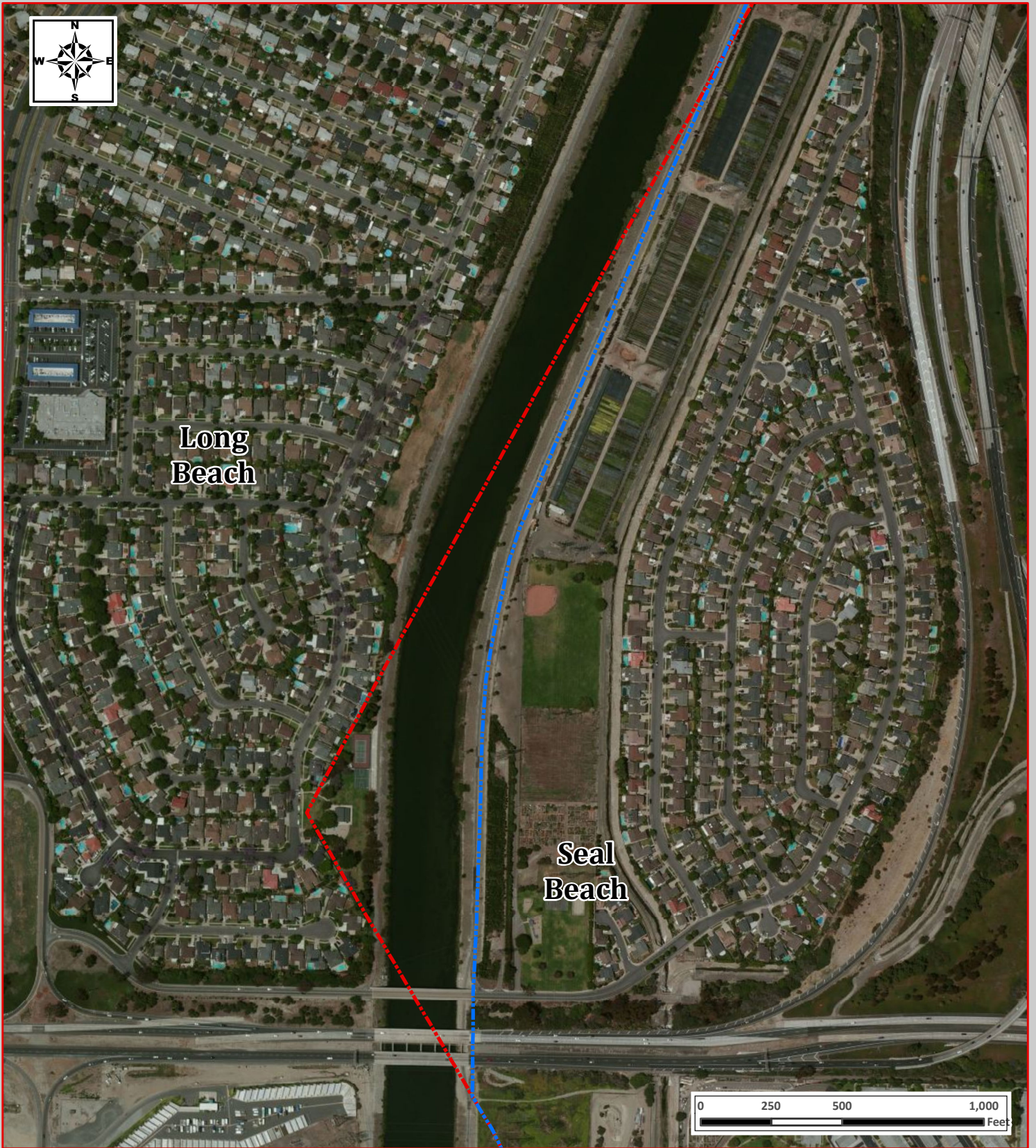


## County Boundary Adjustment for the City of Seal Beach (RO 11-03)

*Annexation to the City of Los Alamitos, OC Vector Control District, OC Cemetery District, OC Parks (CSA 26), Orange County Sanitation District, Orange County Water District, and the Municipal Water District of Orange County*

Legend	
	Proposed Boundary
	Existing Boundary

# Exhibit 4 - Area 5 Vicinity Map



## County Boundary Adjustment for the City of Seal Beach (RO 11-03)

*Annexation to the City of Los Alamitos, OC Vector Control District, OC Cemetery District, OC Parks (CSA 26), Orange County Sanitation District, Orange County Water District, and the Municipal Water District of Orange County*

**Legend**



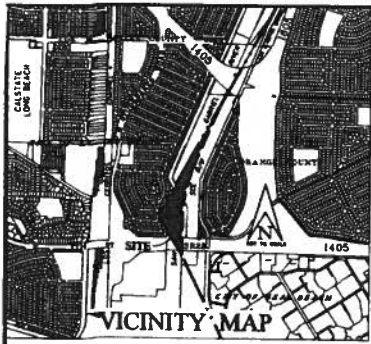
-  Proposed Boundary
-  Existing Boundary

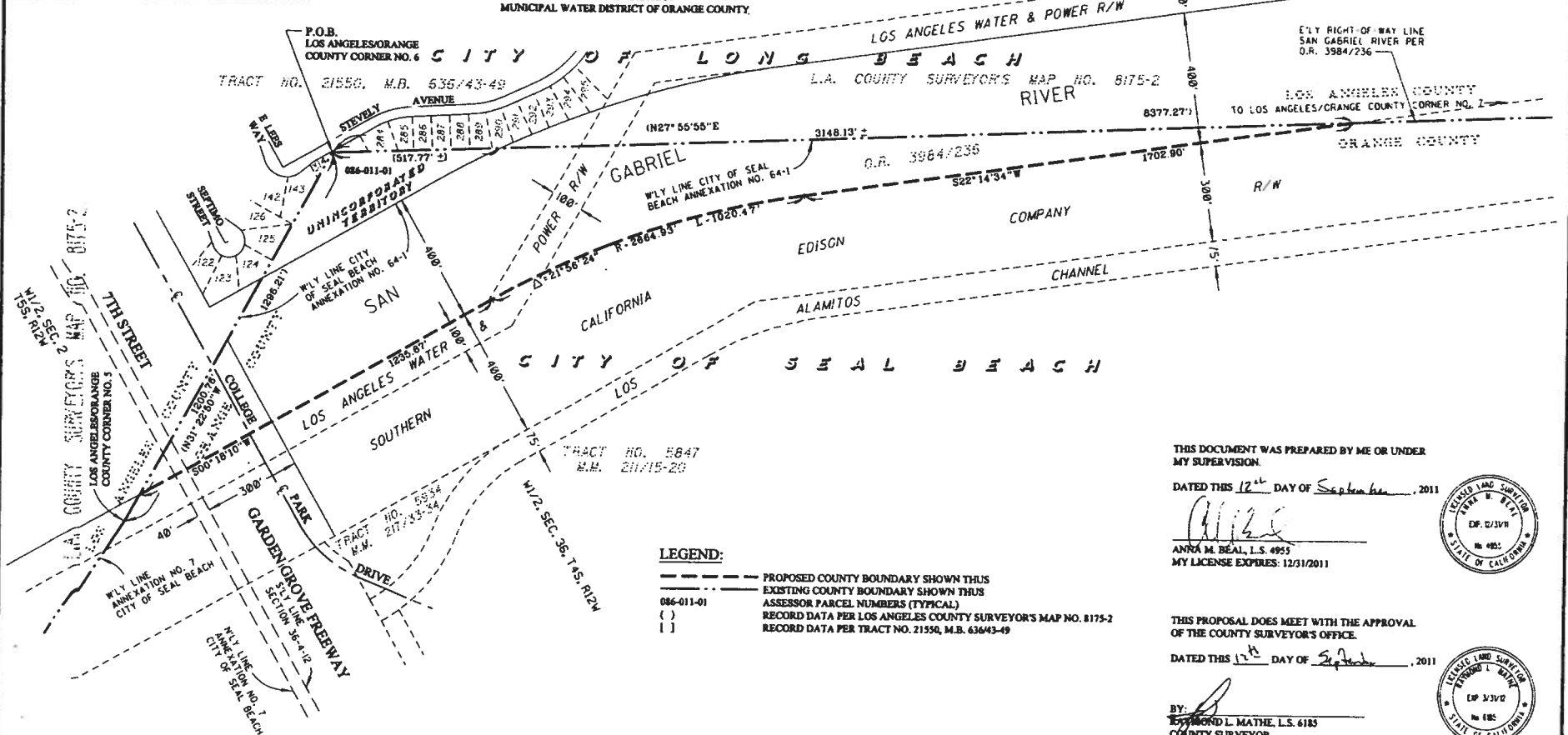
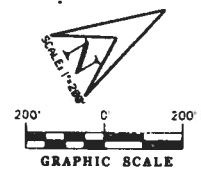
Exhibit B



### EXHIBIT "B" COUNTY BOUNDARY ADJUSTMENT AREA 5 FROM ORANGE COUNTY TO LOS ANGELES COUNTY

COUNTY BOUNDARY REORGANIZATION FOR THE CITY OF SEAL BEACH (RO 11-03)  
 DETACH FROM  
 CITY OF SEAL BEACH  
 UNINCORPORATED TERRITORY OF ORANGE COUNTY  
 ORANGE COUNTY VECTOR CONTROL DISTRICT  
 ORANGE COUNTY CEMETERY DISTRICT  
 ORANGE COUNTY PARKS (CSA 26)  
 ORANGE COUNTY SANITATION DISTRICT  
 ORANGE COUNTY WATER DISTRICT  
 MUNICIPAL WATER DISTRICT OF ORANGE COUNTY.

CITY OF LONG BEACH REORGANIZATION NO. 2011-13 (COUNTY BOUNDARY ADJUSTMENT)  
 ANNEX TO  
 CITY OF LONG BEACH  
 GREATER LOS ANGELES COUNTY VECTOR CONTROL DISTRICT  
 LOS ANGELES COUNTY SANITATION DISTRICT NO. 19  
 WATER REPLENISHMENT DISTRICT OF SOUTHERN CALIFORNIA



AREA OF ADJUSTMENT - ± 21.02 ACRES

- LEGEND:**
- PROPOSED COUNTY BOUNDARY SHOWN THIS
  - EXISTING COUNTY BOUNDARY SHOWN THIS
  - 086-011-01 ASSESSOR PARCEL NUMBERS (TYPICAL)
  - ( ) RECORD DATA PER LOS ANGELES COUNTY SURVEYOR'S MAP NO. 8175-2
  - [ ] RECORD DATA PER TRACT NO. 21550, M.B. 63643-49

THIS DOCUMENT WAS PREPARED BY ME OR UNDER MY SUPERVISION.

DATED THIS 12<sup>th</sup> DAY OF September, 2011

*Anna M. Beal*  
 ANNA M. BEAL, L.S. 4955  
 MY LICENSE EXPIRES: 12/31/2011



THIS PROPOSAL DOES MEET WITH THE APPROVAL OF THE COUNTY SURVEYOR'S OFFICE.

DATED THIS 1<sup>st</sup> DAY OF September, 2011

BY: *Ward L. Mathe*  
 WARD L. MATHE, L.S. 6185  
 COUNTY SURVEYOR  
 MY LICENSE EXPIRES: 03/31/2012





## EXHIBIT "B" COUNTY BOUNDARY ADJUSTMENT AREA 7 FROM LOS ANGELES COUNTY TO ORANGE COUNTY

CITY OF LONG BEACH REORGANIZATION NO. 2011-13  
 (COUNTY BOUNDARY ADJUSTMENT)

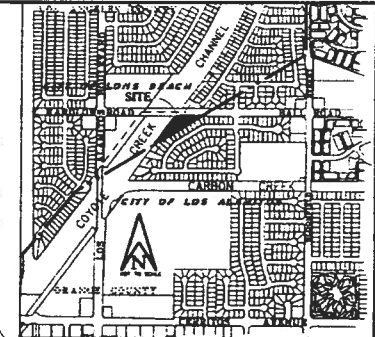
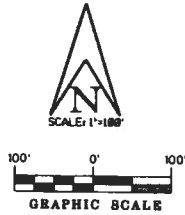
COUNTY BOUNDARY REORGANIZATION FOR THE  
 CITY OF LOS ALAMITOS (NO. 11-02)

DETACH FROM

ANNEX TO

CITY OF LONG BEACH  
 GREATER LOS ANGELES COUNTY VECTOR CONTROL DISTRICT  
 LOS ANGELES COUNTY SANITATION DISTRICT NO. 19  
 WATER REPLENISHMENT DISTRICT OF SOUTHERN CALIFORNIA

CITY OF LOS ALAMITOS  
 ORANGE COUNTY VECTOR CONTROL DISTRICT  
 ORANGE COUNTY CEMETERY DISTRICT  
 ORANGE COUNTY PARKS (CSA 26)  
 ORANGE COUNTY WATER DISTRICT  
 MUNICIPAL WATER DISTRICT OF ORANGE COUNTY  
 ROSSMOOR/LOS ALAMITOS AREA SEWER DISTRICT



F.O.C.  
 LOS ANGELES/ORANGE  
 COUNTY CORNER NO. 10

COURSE DATA	
A	N49°01'15"E 42.40
B	N75°48'10"E 89.45

ASSESSOR PARCEL NO.	DOCUMENT	INSTRUMENT NO.
1 7078-019-005	GRANT DEED	95-1821402
2 7078-019-006	QUITCLAIM DEED	2712/BK D5123, PG 629
3 7078-019-007	GRANT DEED	03-3515114
4 7078-019-011	GRANT DEED	94-1696223
5 7078-019-009	GRANT DEED	77-1147996
6 7078-019-010	GRANT DEED	06-1424512
7 7078-019-906	QUITCLAIM DEED	4828/BK D5548, PG. 879

THIS DOCUMENT WAS PREPARED BY ME OR UNDER  
 MY SUPERVISION.

DATED THIS 2<sup>nd</sup> DAY OF September, 2011

*Anna M. Beal*  
 ANNA M. BEAL, L.S. 4993  
 MY LICENSE EXPIRES: 12/31/2011



THIS PROPOSAL DOES MEET WITH THE APPROVAL  
 OF THE COUNTY SURVEYOR'S OFFICE.

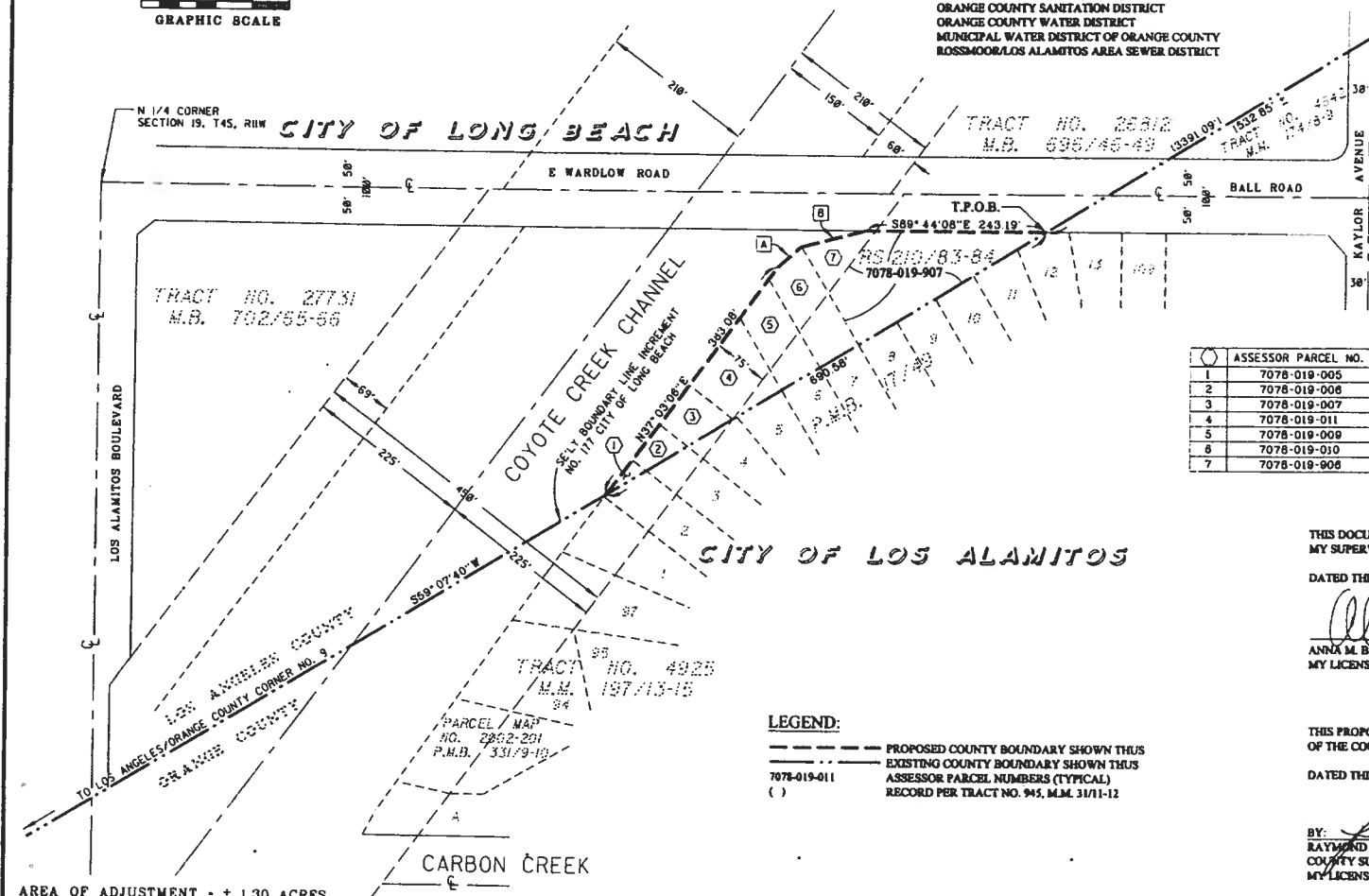
DATED THIS 1<sup>st</sup> DAY OF September, 2011

BY: *Raymond L. Mathe*  
 RAYMOND L. MATHE, L.S. 6185  
 COUNTY SURVEYOR  
 MY LICENSE EXPIRES: 03/31/2012



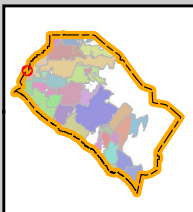
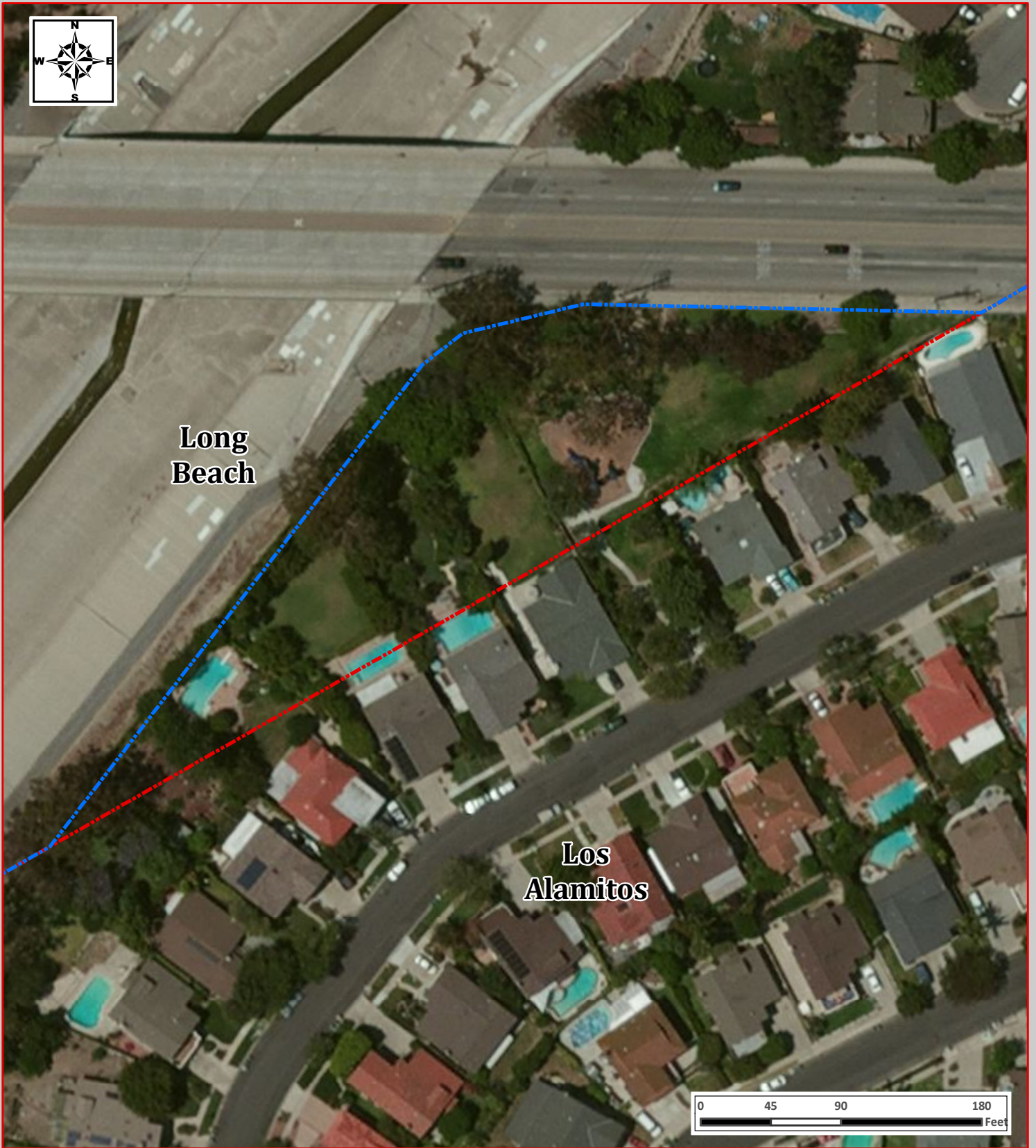
**LEGEND:**

- PROPOSED COUNTY BOUNDARY SHOWN THUS
- EXISTING COUNTY BOUNDARY SHOWN THUS
- 7078-019-011 ASSESSOR PARCEL NUMBERS (TYPICAL)
- ( ) RECORD PER TRACT NO. 945, M.M. 31/11-12



AREA OF ADJUSTMENT - ± 1.30 ACRES

# Exhibit 5 - Area 7 Vicinity Map



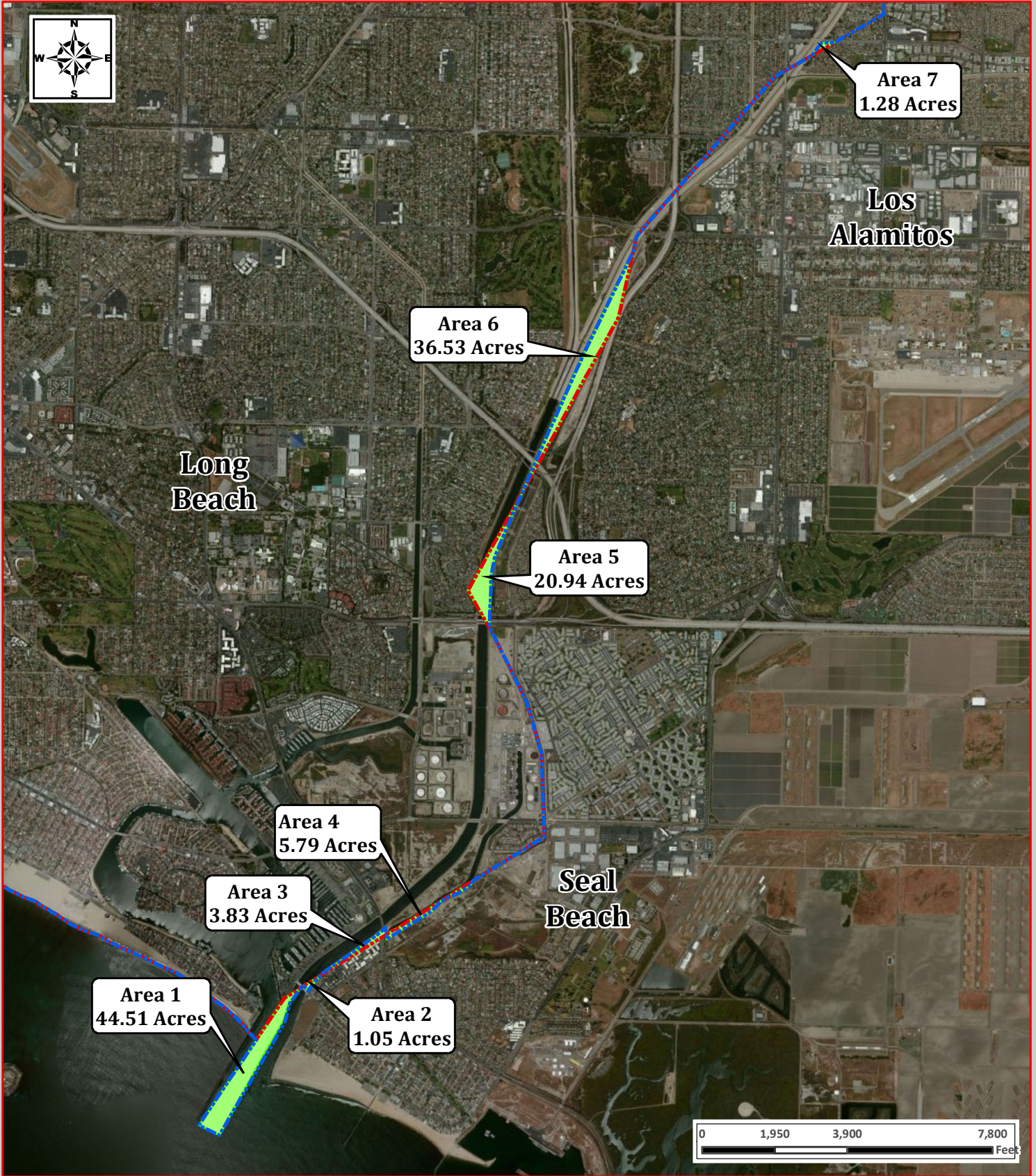
## County Boundary Adjustment for the City of Los Alamitos (RO 11-02)

*Annexation to the City of Los Alamitos, OC Vector Control District, OC Cemetery District, OC Parks (CSA 26), Orange County Sanitation District, Orange County Water District, Municipal Water District of Orange County, and the Rossmoor-Los Alamitos Area Sewer District*

### Legend

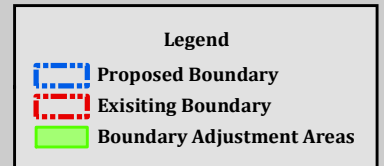
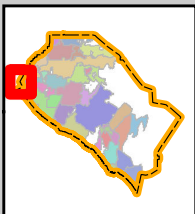
-  Proposed Boundary
-  Existing Boundary

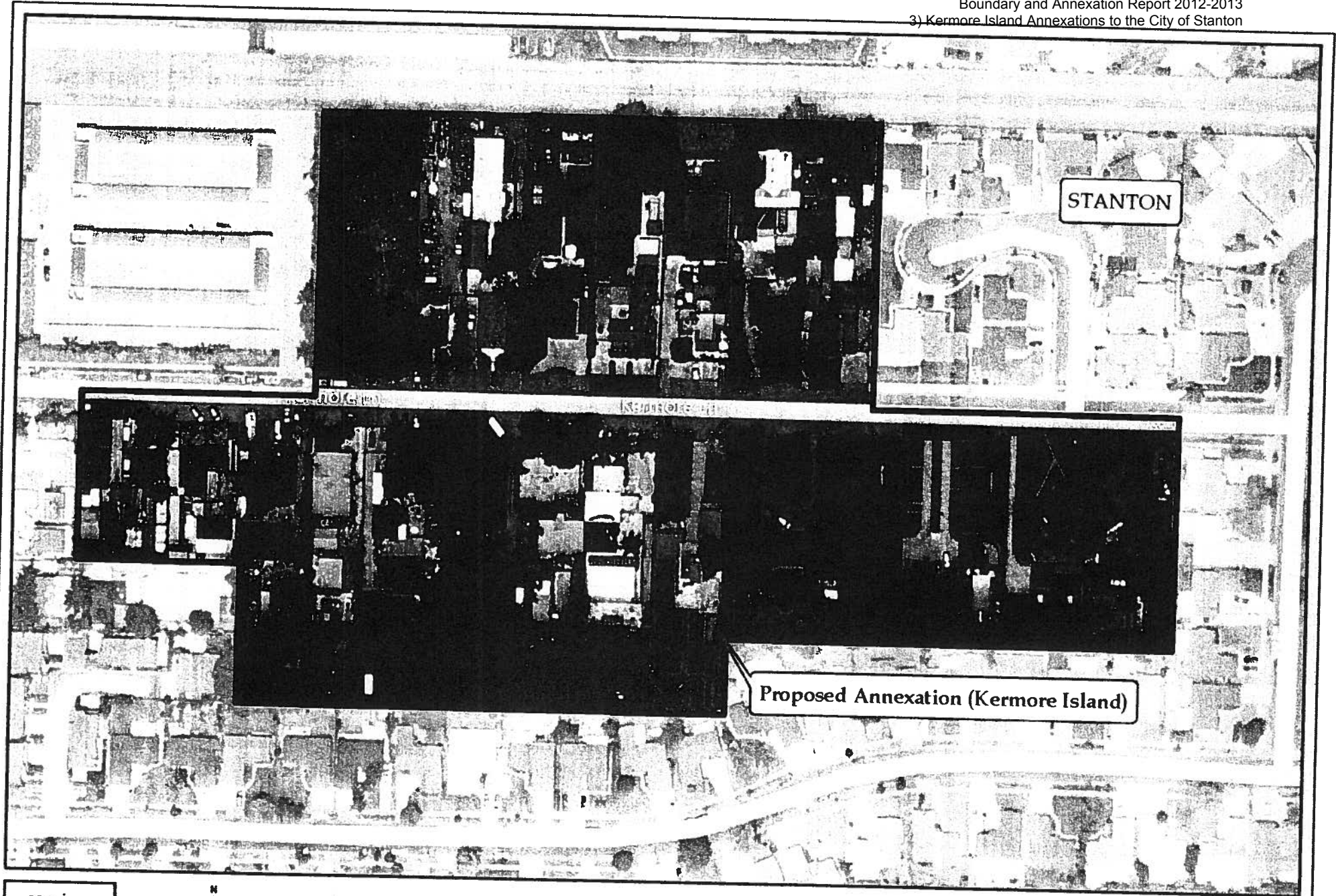
# Exhibit 1 - Vicinity Map



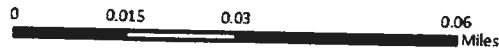
## Proposed County Boundary Adjustments

*Orange & Los Angeles Counties  
Cities of Long Beach, Los Alamitos, and Seal Beach*





**Kermore Island Annexation to the City of Stanton - Island #2 (IA 12-03)  
Vicinity Map**



 Kermore Island  
 Stanton