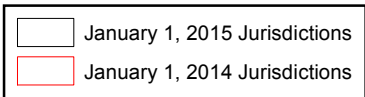


# Orange County Boundary and Annexation Report 2014-2015 (January 1)



1. Mission Viejo Dog Park Reorganization to the City of Mission Viejo (RO 12-05)
2. Carmel/Lampson Reorganization to the City of Garden Grove (RO 12-09)
3. Santa Ana/Colleen Island Annexation to the City of Costa Mesa (IA 13-16)



Source: OC Geomatics, 2014 & 2015  
 Note: Coastal boundary represents mean high tide circa 2015. Coastal boundary approximated by CDR GIS staff.

**Orange County Boundary and Annexation Report 2014-2015**

Jurisdiction	Total Area (Square Miles)*		Area Change 2014-2015**	Annexation Reference #
	January 1, 2014	January 1, 2015		
Aliso Viejo	6.921	6.921	0	
Anaheim	50.872	50.872	0	
Brea	12.221	12.221	0	
Buena Park	10.550	10.550	0	
Costa Mesa	15.827	15.849	0.022	3
Cypress	6.622	6.622	0	
Dana Point	6.602	6.602	0	
Fountain Valley	9.065	9.065	0	
Fullerton	22.447	22.447	0	
Garden Grove	17.923	17.924	0.002	2
Huntington Beach	27.612	27.612	0	
Irvine	65.969	65.969	0	
Laguna Beach	8.932	8.932	0	
Laguna Hills	6.647	6.647	0	
Laguna Niguel	14.787	14.787	0	
Laguna Woods	3.306	3.306	0	
La Habra	7.369	7.369	0	
Lake Forest	16.785	16.785	0	
La Palma	1.804	1.804	0	
Los Alamitos	4.091	4.091	0	
Mission Viejo	18.003	18.009	0.006	1a, 1b
Newport Beach	25.987	25.987	0	
Orange	25.783	25.783	0	
Placentia	6.621	6.621	0	
Rancho Santa Margarita	12.937	12.935	-0.002	1a
San Clemente	18.357	18.357	0	
San Juan Capistrano	14.407	14.407	0	
Santa Ana	27.352	27.352	0	
Seal Beach	11.880	11.880	0	
Stanton	3.105	3.105	0	
Tustin	11.137	11.137	0	
Villa Park	2.078	2.078	0	
Westminster	10.070	10.070	0	
Yorba Linda	19.867	19.867	0	
Unincorporated	275.874	275.847	-0.028	1b, 2, 3
<b>Orange County</b>	<b>799.811</b>	<b>799.811</b>	<b>0.000</b>	

Source: O.C. Geomatics, 2014 & 2015

\*Area calculated in ArcGIS by CDR.

\*\*Annual area change totals may not match detailed annexation information due to rounding.

**Detailed Annexation List:**

- 1) a) Mission Viejo Dog Park Reorganization to the City of Mission Viejo (RO 12-05)  
Effective: 7/21/2014  
From Rancho Santa Margarita to Mission Viejo  
Uninhabited: Dog Park  
1.27 acres (0.00198 sq. miles)
  
- 1) b) Mission Viejo Dog Park Reorganization to the City of Mission Viejo (RO 12-05)  
Effective: 7/21/2014  
From Unincorporated County to Mission Viejo  
Uninhabited: Dog Park  
2.67 acres (0.00417 sq. miles)
  
- 2) Carmel/Lampson Reorganization to the City of Garden Grove (RO 12-09)  
Effective: 10/06/2014  
From Unincorporated Orange County to Garden Grove  
Inhabited  
1.01 acres (0.00157 sq. miles)
  
- 3) Santa Ana/Colleen Island Annexation to the City of Costa Mesa (IA 13-16)  
Effective: 12/16/2014  
From Unincorporated Orange County to Costa Mesa  
Inhabited  
14 acres (0.02186 sq. miles)

**Notes:**

Benchmark 2015.

Some jurisdictions' legal boundary extends three miles off the coast.

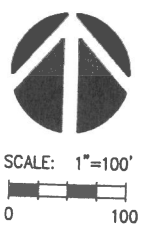
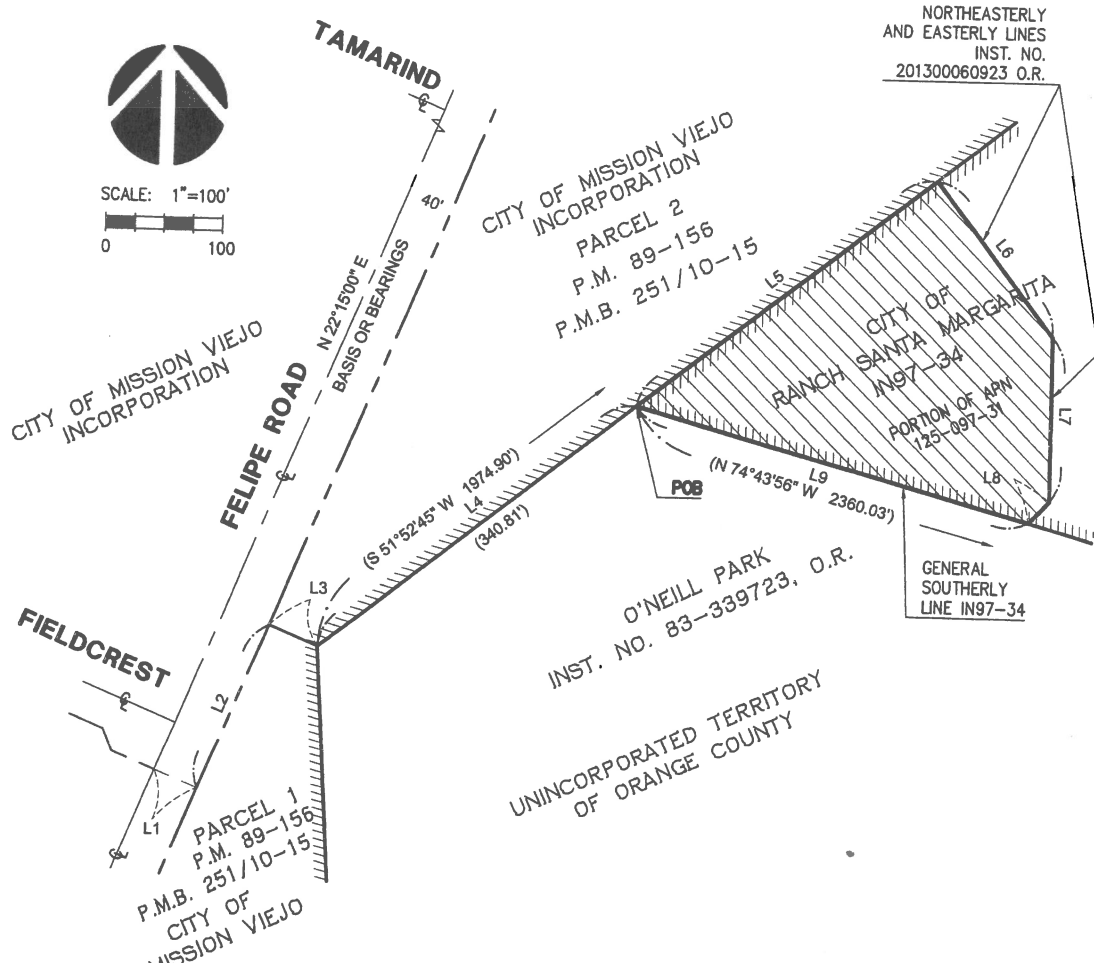
A fixed boundary line at the coast was created in November 2014 based on high-resolution county-wide aerial imagery that was captured on June 19, 2013, to approximate the ocean waterline and to eliminate artificial land area changes to jurisdictions adjacent to the Orange County coast. This coast line does not define any vertical datum such as mean high tide, mean sea level, or mean lower low tide.

This reference line was developed through a collaboration of OC Public Works, OC LAFCO, and CDR; it has no legal value; and its purpose is for CDR's use in reporting population density and jurisdictional annexations.

For official legal boundaries, contact the County of Orange Surveyor's office

<http://ocpublicworks.com/survey/>

**EXHIBIT "B"**  
**REORGANIZATION NO. RO 12-05**  
**MISSION VIEJO DOG PARK REORGANIZATION TO THE CITY OF MISSION VIEJO**  
**(CITY OF MISSION VIEJO RESOLUTION 13-23 - RANCHO SANTA MARGARITA)**



NORTHEASTERLY  
 AND EASTERLY LINES  
 INST. NO.  
 201300060923 O.R.

This proposal was prepared under my supervision.

Dated this 10<sup>th</sup> day of August 2013.

*Richard A. Moore*  
 Richard A. Moore, RCE 23971  
 My license expires 12/31/13



This description and map of proposed reorganization does meet the approval of the Orange County Surveyor's Office.

Dated this 22<sup>nd</sup> day of August, 2013

By: *Kevin R. Hills*  
 Kevin R. Hills, County Surveyor,  
 L.S. 6617  
 My license expires 12/31/13



- LEGEND**
- ( ) RECORD PER EXISTING CITY INCORPORATIONS
  - AREA OF REORGANIZATION
  - POB** POINT OF BEGINNING
  - EXISTING CITY BOUNDARY LINES

Containing 1.27 acres, more or less.

THE BEARINGS SHOWN HEREON ARE BASED ON THE CENTERLINE OF FELIPE ROAD BEING NORTH 22°15'00" EAST AS SHOWN ON PARCEL MAP 89-156, BOOK 251/10-15, O.R.

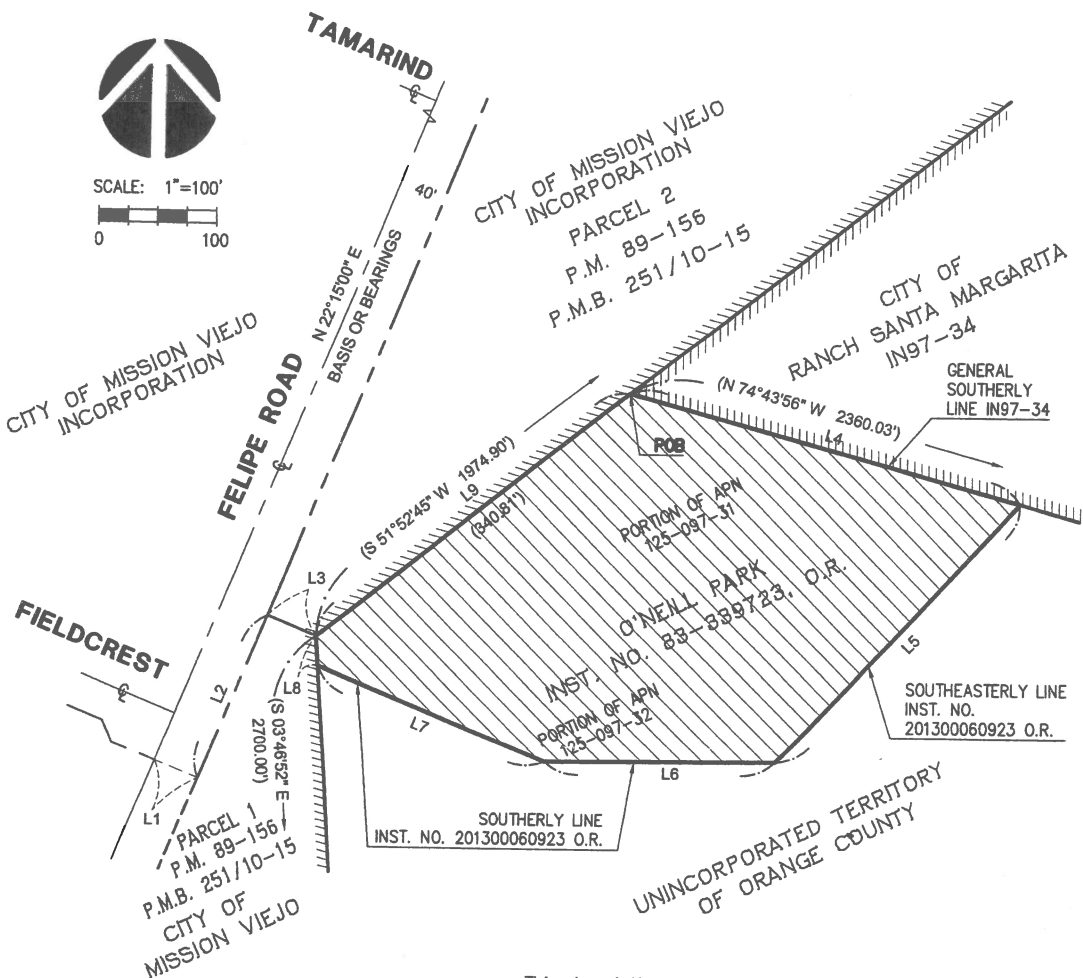
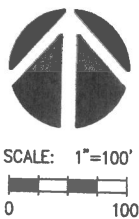
LINE TABLE			
LINE	LENGTH	BEARING	
L1	40.00'	N67°45'00"W	
L2	153.73'	N22°15'00"E	
L3	44.87'	N67°45'00"W	
L4	340.81'	N51°50'25"E	
L5	319.85'	N51°50'25"E	COURSE 1
L6	165.73'	S38°09'35"E	COURSE 2
L7	140.19'	S00°20'49"E	COURSE 3
L8	25.97'	S43°04'09"W	COURSE 4
L9	349.30'	N74°45'16"W	COURSE 5

**MCE CONSULTANTS**

**CIVIL ENGINEERING  
 LAND SURVEYING**

111 CORPORATE DR., #210  
 LADERA RANCH, CA 92694  
 PHONE: 949-542-7220  
 FAX: 949-542-7230

**EXHIBIT "B"**  
**REORGANIZATION NO. RO 12-05**  
**MISSION VIEJO DOG PARK REORGANIZATION TO THE CITY OF MISSION VIEJO**  
**(CITY OF MISSION VIEJO RESOLUTION 13-24 - COUNTY OF ORANGE)**



This proposal was prepared under my supervision.

Dated this 20<sup>th</sup> day of August, 2013.

*Richard A. Moore*  
 Richard A. Moore, RCE 23971  
 My license expires 12/31/13



This description and map of proposed reorganization does meet the approval of the Orange County Surveyor's Office.

Dated this 22<sup>nd</sup> day of August, 2013.

By: *Kevin R. Hills*  
 Kevin R. Hills, County Surveyor,  
 L.S. 6617  
 My license expires 12/31/13



**LEGEND**

- ( ) RECORD PER EXISTING CITY INCORPORATIONS
- AREA OF REORGANIZATION
- POINT OF BEGINNING
- EXISTING CITY BOUNDARY LINES

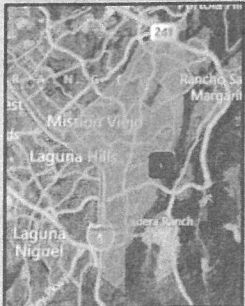
Containing 2.67 acres, more or less.

THE BEARINGS SHOWN HEREON ARE BASED ON THE CENTERLINE OF FELIPE ROAD BEING NORTH 22°15'00" EAST AS SHOWN ON PARCEL MAP 89-156, BOOK 251/10-15, O.R.

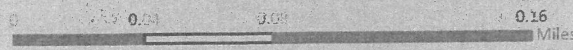
LINE TABLE		
LINE	LENGTH	BEARING
L1	40.00'	N67°45'00"W
L2	153.73'	N22°15'00"E
L3	44.87'	N67°45'00"W
L4	349.30'	S74°45'16"E
L5	305.77'	S43°04'09"W
L6	198.19'	S89°30'22"W
L7	212.07'	N67°45'00"W
L8	26.11'	N03°46'06"W
L9	340.81'	N51°50'25"E



**CIVIL ENGINEERING  
 LAND SURVEYING**  
 111 CORPORATE DR., #210  
 LADERA RANCH, CA 92694  
 PHONE: 949-542-7220  
 FAX: 949-542-7230



### Mission Viejo Dog Park Reorganization to the City of Mission Viejo (RO 12-05)



- Proposed Reorganization (RO 12-05)
- City of Mission Viejo
- City of Rancho Santa Margarita

EXHIBIT C

RO 12-09

VICINITY MAP



Exhibit A

