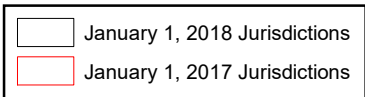


Orange County Boundary and Annexation Report 2017-2018 (January 1)



1. Plano Trabuco/Dove Canyon Annexation to the City of Rancho Santa Margarita (CA 13-11)



Source: OC Geomatics, 2017 & 2018
 Note: Coastal boundary represents mean high tide circa 2015. Coastal boundary approximated by CDR GIS staff.

Orange County Boundary and Annexation Report 2017-2018

Jurisdiction	Total Area (Square Miles)*		Area Change 2017-2018**	Annexation Reference #
	January 1, 2017	January 1, 2018		
Aliso Viejo	6.921	6.921	0	
Anaheim	50.872	50.872	0	
Brea	12.221	12.221	0	
Buena Park	10.550	10.550	0	
Costa Mesa	15.849	15.849	0	
Cypress	6.622	6.622	0	
Dana Point	6.602	6.602	0	
Fountain Valley	9.065	9.065	0	
Fullerton	22.447	22.447	0	
Garden Grove	17.924	17.924	0	
Huntington Beach	27.612	27.612	0	
Irvine	65.969	65.969	0	
Laguna Beach	8.932	8.932	0	
Laguna Hills	6.647	6.647	0	
Laguna Niguel	14.787	14.787	0	
Laguna Woods	3.306	3.306	0	
La Habra	7.369	7.369	0	
Lake Forest	16.785	16.785	0	
La Palma	1.804	1.804	0	
Los Alamitos	4.091	4.091	0	
Mission Viejo	18.009	18.009	0	
Newport Beach	25.987	25.987	0	
Orange	25.783	25.783	0	
Placentia	6.621	6.621	0	
Rancho Santa Margarita	12.935	12.938	0	1
San Clemente	18.357	18.357	0	
San Juan Capistrano	14.407	14.407	0	
Santa Ana	27.352	27.352	0	
Seal Beach	11.880	11.880	0	
Stanton	3.105	3.105	0	
Tustin	11.137	11.137	0	
Villa Park	2.078	2.078	0	
Westminster	10.070	10.070	0	
Yorba Linda	19.867	19.867	0	
Unincorporated	275.847	275.844	0	1
Orange County	799.811	799.811	0.000	

Source: O.C. Geomatics, 2017 & 2018

*Area calculated in ArcGIS by CDR.

**Annual area change totals may not match detailed annexation information due to rounding.

Detailed Annexation List:

- 1) Plano Trabuco/Dove Canyon Annexation (CA 13-11)
Effective: 2/07/2017
From the County of Orange to the City of Rancho Santa Margarita
Uninhabited
1.7 acres (0.0026 sq. miles)

Notes:

Benchmark 2015.

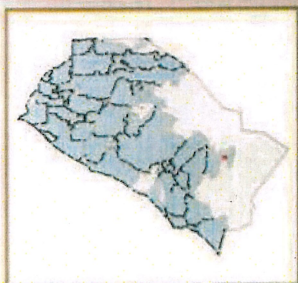
Some jurisdictions' legal boundary extends three miles off the coast.

A fixed boundary line at the coast was created in November 2014 based on high-resolution county-wide aerial imagery that was captured on June 19, 2013, to approximate the ocean waterline and to eliminate artificial land area changes to jurisdictions adjacent to the Orange County coast. This coast line does not define any vertical datum such as mean high tide, mean sea level, or mean lower low tide. This reference line was developed through a collaboration of OC Public Works, OC LAFCO, and CDR; it has no legal value; and its purpose is for CDR's use in reporting population density and jurisdictional annexations.

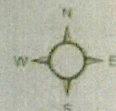
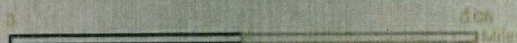
For official legal boundaries, contact the County of Orange Surveyor's office <http://ocpublicworks.com/survey/>

Attachment 1

EXHIBIT A



Plano Trabuco Road/Dove Canyon Drive
Annexation to the City of Rancho Santa Margarita
(CA 13-11)
Vicinity Map



Attachment 1

EXHIBIT B



Plano Trabuco Road Dove Canyon Drive Annexation to the City of Rancho Santa Margarita (CA 13-11)



- Annexation
- RANCHO SANTA MARGARITA
- UNINCORPORATED
- County Trails



Exhibit B

SHEET 1 OF 1

EXHIBIT "B"

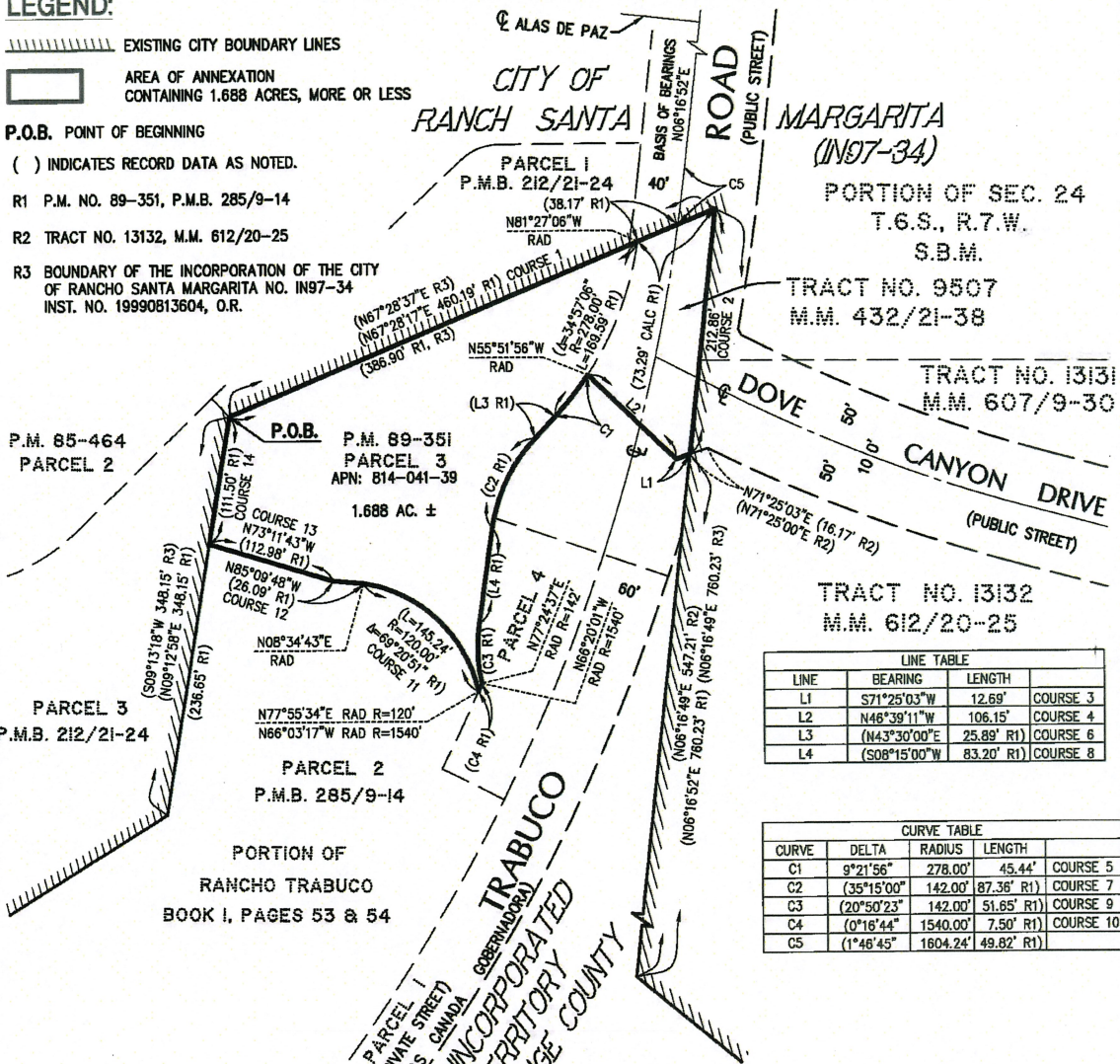
**PLANO TRABUCO ROAD/DOVE CANYON DRIVE ANNEXATION
 TO THE CITY OF RANCHO SANTA MARGARITA (CA 13-11)**

LEGEND:

-  EXISTING CITY BOUNDARY LINES
-  AREA OF ANNEXATION
CONTAINING 1.688 ACRES, MORE OR LESS

P.O.B. POINT OF BEGINNING

- () INDICATES RECORD DATA AS NOTED.
- R1 P.M. NO. 89-351, P.M.B. 285/9-14
- R2 TRACT NO. 13132, M.M. 612/20-25
- R3 BOUNDARY OF THE INCORPORATION OF THE CITY
OF RANCHO SANTA MARGARITA NO. IN97-34
INST. NO. 19990813604, O.R.



LINE TABLE			
LINE	BEARING	LENGTH	
L1	S71°25'03"W	12.69'	COURSE 3
L2	N46°39'11"W	106.15'	COURSE 4
L3	(N43°30'00"E	25.89' (R1)	COURSE 6
L4	(S08°15'00"W	83.20' (R1)	COURSE 8

CURVE TABLE				
CURVE	DELTA	RADIUS	LENGTH	
C1	9°21'56"	278.00'	45.44'	COURSE 5
C2	(35°15'00"	142.00'	87.36' (R1)	COURSE 7
C3	(20°50'23"	142.00'	51.65' (R1)	COURSE 9
C4	(0°18'44"	1540.00'	7.50' (R1)	COURSE 10
C5	(1°46'45"	1604.24'	49.82' (R1)	

THE BEARINGS SHOWN HEREON ARE BASED ON THE CENTERLINE OF PLANO TRABUCO ROAD BEING N06°16'52"E AS SHOWN ON PARCEL MAP 89-351, P.M.B. 285/9-14

THIS MAP WAS MADE BY ME OR UNDER MY DIRECTION

[Signature] 11/14/15
 ROBERT L. WHEELER IV DATE
 L.S. NO. 8639



THIS DESCRIPTION AND MAP OF PROPOSED ANNEXATION DOES MEET THE APPROVAL OF THE ORANGE COUNTY SURVEYOR'S OFFICE.

DATED THIS *14th* DAY OF *November*, 2015.

KEVIN R. HILLS, COUNTY SURVEYOR
 L.S. 6617, EXPIRATION DATE: 12-31-15



[Signature]
 BY: CRAIG S. WEHRMAN, CHIEF DEPUTY SURVEYOR

PREPARED BY:

HUNSAKER & ASSOCIATES
 IRVINE, INC.
 PLANNING • ENGINEERING • SURVEYING
 Three Hughes • Irvine, CA 92618 • Ft: (949) 583-1010 • Fx: (949) 583-0759