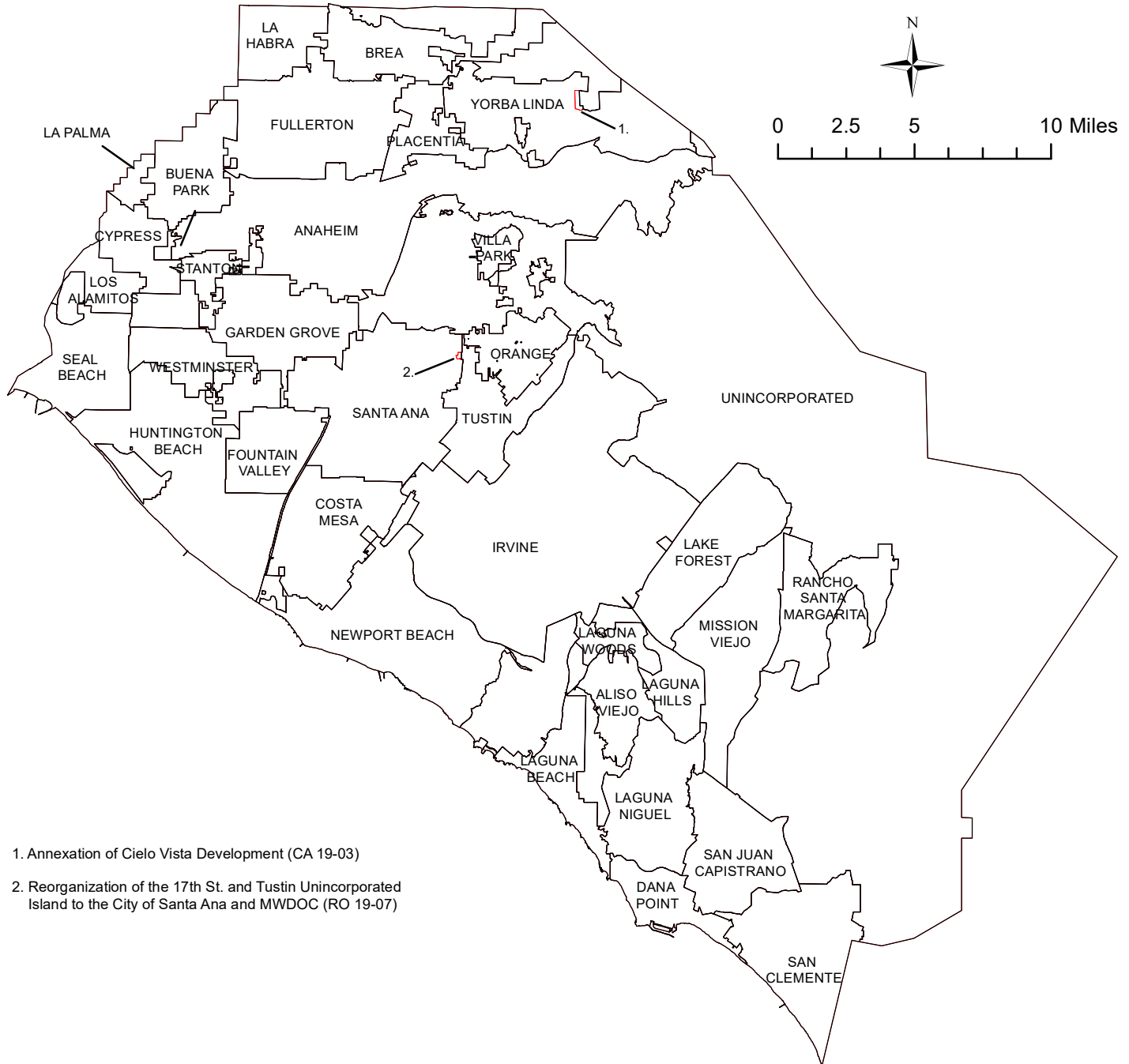


Orange County Boundary and Annexation Report 2019-2020 (January 1)



1. Annexation of Cielo Vista Development (CA 19-03)
2. Reorganization of the 17th St. and Tustin Unincorporated Island to the City of Santa Ana and MWDOC (RO 19-07)

	January 1, 2020 Jurisdictions
	January 1, 2019 Jurisdictions

Source: OC Geomatics, 2019 & 2020
 Note: Coastal boundary represents mean high tide circa 2015. Coastal boundary approximated by CDR GIS staff.

Orange County Boundary and Annexation Report 2019-2020

Jurisdiction	Total Area (Square Miles)*		Area Change 2019-2020**	Annexation Reference #
	January 1, 2019	January 1, 2020		
Aliso Viejo	6.921	6.921	0	
Anaheim	50.872	50.872	0	
Brea	12.221	12.221	0	
Buena Park	10.550	10.550	0	
Costa Mesa	15.849	15.849	0	
Cypress	6.622	6.622	0	
Dana Point	6.602	6.602	0	
Fountain Valley	9.065	9.065	0	
Fullerton	22.447	22.447	0	
Garden Grove	17.924	17.924	0	
Huntington Beach	27.612	27.612	0	
Irvine	65.969	65.969	0	
Laguna Beach	8.932	8.932	0	
Laguna Hills	6.647	6.647	0	
Laguna Niguel	14.787	14.787	0	
Laguna Woods	3.306	3.306	0	
La Habra	7.369	7.369	0	
Lake Forest	16.785	16.785	0	
La Palma	1.804	1.804	0	
Los Alamitos	4.091	4.091	0	
Mission Viejo	18.009	18.009	0	
Newport Beach	25.987	25.987	0	
Orange	25.783	25.783	0	
Placentia	6.621	6.621	0	
Rancho Santa Margarita	12.938	12.938	0	
San Clemente	18.357	18.357	0	
San Juan Capistrano	14.407	14.407	0	
Santa Ana	27.352	27.390	0.038	2
Seal Beach	11.880	11.880	0	
Stanton	3.105	3.105	0	
Tustin	11.137	11.137	0	
Villa Park	2.078	2.078	0	
Westminster	10.070	10.070	0	
Yorba Linda	19.867	20.000	0.133	1
Unincorporated	275.844	275.674	-0.171	1,2
Orange County	799.811	799.811	0	

Detailed Annexation List:

- Annexation of Cielo Vista Development (CA 19-03)
Effective: 12/20/2019
From the County of Orange to the City of Yorba Linda
Uninhabited
84.812 Acres (0.13251875 sq. miles)
- Reorganization of the 17th St. and Tustin Unincorporated Island (RO 19-07)
From Unincorporated to the City of Santa Ana and MWDOC
Effective: 12/31/2019
Inhabited
24.79 Acres (0.038734375 sq. miles)

Notes:
Benchmark 2015.
Some jurisdictions' legal boundary extends three miles off the coast.
A fixed boundary line at the coast was created in November 2014 based on high-resolution county-wide aerial imagery that was captured on June 19, 2013, to approximate the ocean waterline and to eliminate artificial land area changes to jurisdictions adjacent to the Orange County coast. This coast line does not define any vertical datum such as mean high tide, mean sea level, or mean lower low tide. This reference line was developed through a collaboration of OC Public Works, OC LAFCO, and CDR; it has no legal value; and its purpose is for CDR's use in reporting population density and jurisdictional annexations.
For official legal boundaries, contact the County of Orange Surveyor's office <http://ocpublicworks.com/survey/>

Source: O.C. Geomatics, 2019 & 2020

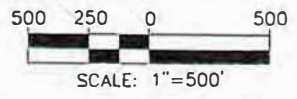
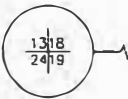
*Area calculated in ArcGIS by CDR.

**Annual area change totals may not match detailed annexation information due to rounding.

SHEET 1 OF 1

CITY OF YORBA LINDA

NORTHEAST BOUNDARY CORNER (B)
 SECTION 18
 SECTION 19
 T3S, R8W
 S.B.M.
 RANCHO CAÑON DE SANTA ANA LINE OF OCCUPATION
 S87°05'05"E 583.21'
 S86°47'07"E 281.78'



CITY OF YORBA LINDA

PORTION OF THE CARRILLO RANCH PROPERTY

P.M. NO. 2016-156 P.M.B. 400/23-30

UNINCORPORATED TERRITORY OF THE COUNTY OF ORANGE

BOUNDARY REFERENCE NOTES:

- (A) ANNEXATION NO. 78-02, BOOK 12810, PAGE 389, O.R.
 - (B) ANNEXATION NO. 75-2, BOOK 11535, PAGE 462, O.R.
 - (C) ANNEXATION NO. 80-01, BOOK 14294, PAGE 505, O.R. AND BOOK 14294, PAGE 510, O.R.
 - (D) PARCEL MAP NO. 2016-156 P.M.B. 400/23-30
 - () RECORD PER EXISTING CITY BOUNDARY (A)
- XXX-XXX-XX ASSESSOR PARCEL NUMBER



LEGEND:

- PROPOSED ANNEXATION BOUNDARY
- EXISTING CITY OF YORBA LINDA BOUNDARY

P.O.B. (S77°50'17"E 880.17')
 N77°52'29"W 880.23'
 N00°56'08"W 25.66'
 N77°52'29"W 119.29'
 L=380.00' R=550.00' Δ=39°35'11"
 N15°20'27"W (RAD) Δ=12°07'13" R=450.00' L=95.19'
 S62°32'20"W 113.62'

CITY OF YORBA LINDA

EXHIBIT "B"

CITY OF YORBA LINDA ANNEXATION OF CIELO VISTA DEVELOPMENT (CA 19-03)

NOTE:

THIS ANNEXATION IS COMPRISED OF 84.812 ACRES
 BEARINGS AND DISTANCES SHOWN HEREON ARE BASED ON PARCEL MAP NO. 2016-156 P.M.B. 400/23-30

PREPARED BY ME OR UNDER MY DIRECT SUPERVISION:

Kurt R. Troxell
 KURT R. TROXELL, L.S. 7854

7/10/2019



THIS DESCRIPTION AND MAP OF PROPOSED ANNEXATION DOES MEET THE APPROVAL OF THE ORANGE COUNTY SURVEYOR'S OFFICE.

DATED THIS 12TH DAY OF JULY 2019

KEVIN R. HILLS, COUNTY SURVEYOR
 L.S. 6617

BY: *Lily M. N. Sandberg*
 LILY M. N. SANDBERG, DEPUTY SURVEYOR
 P.L.S. 8402



EXHIBIT B

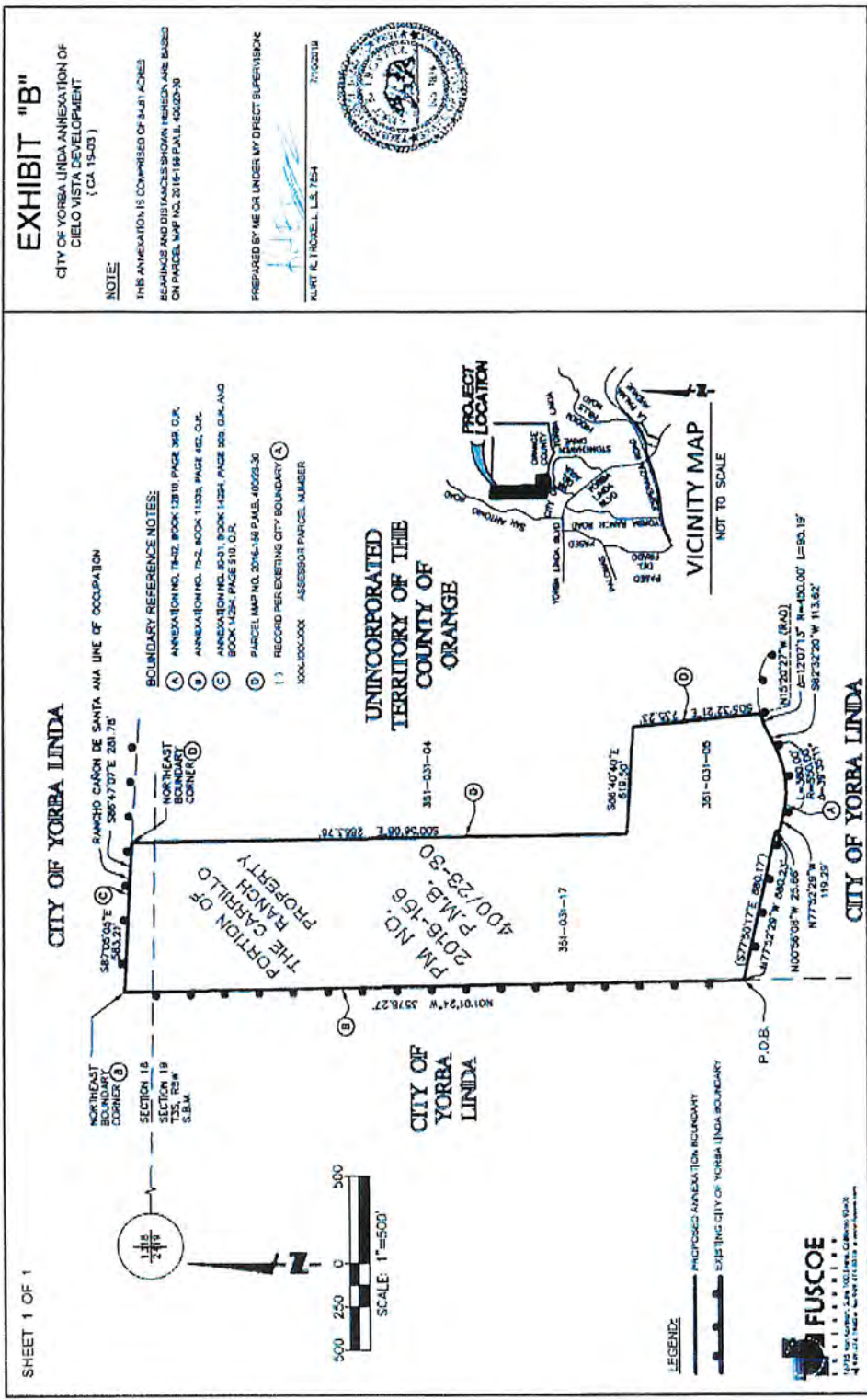


EXHIBIT "B" TRAIL ALIGNMENTS

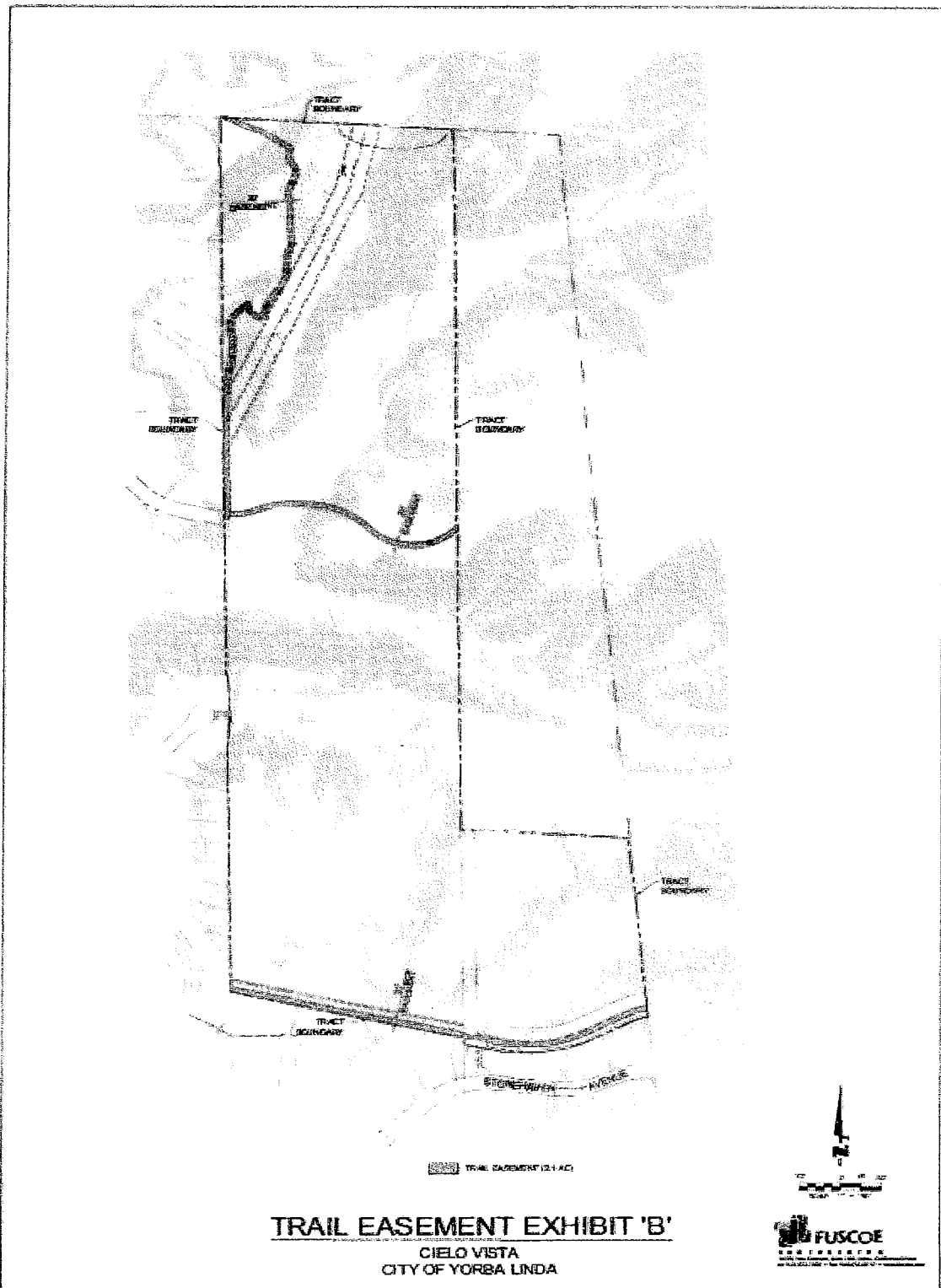
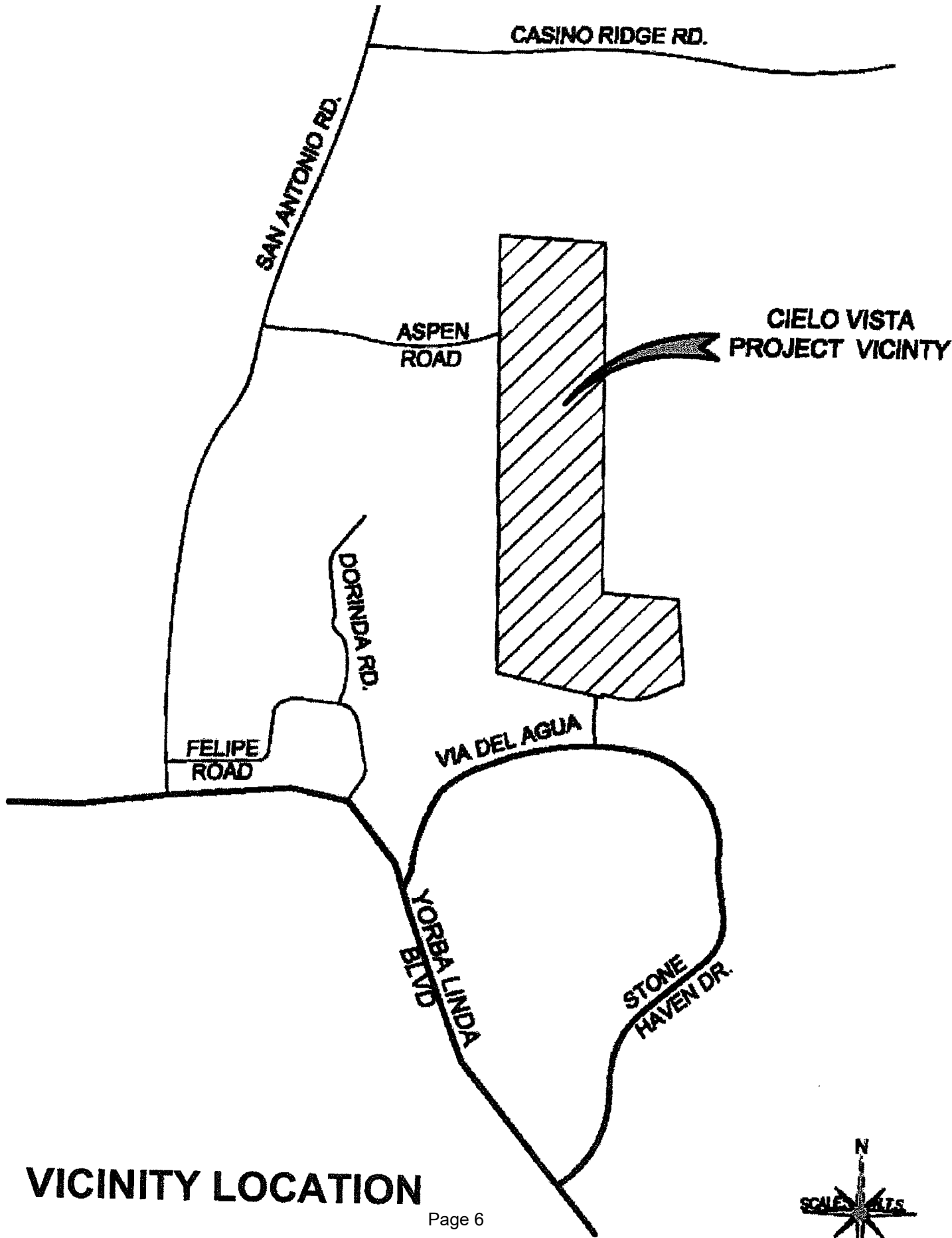


EXHIBIT "A"



VICINITY LOCATION



EXHIBIT "D"

IMPERIAL HWY

Fairmont Reservoir
Fairmont BPS

NOT TO SCALE

Highland Reservoir
Highland BPS

Yorba Linda BPS

YORBA LINDA BLVD

RICHFIELD ROAD

LAKEVIEW AVE

FAIRMONT BLVD

ORANGETHORPE AVE

LA PALMA AVE

Well 20

EXISTING WATER FACILITIES EXHIBIT

YORBA LINDA WATER DISTRICT

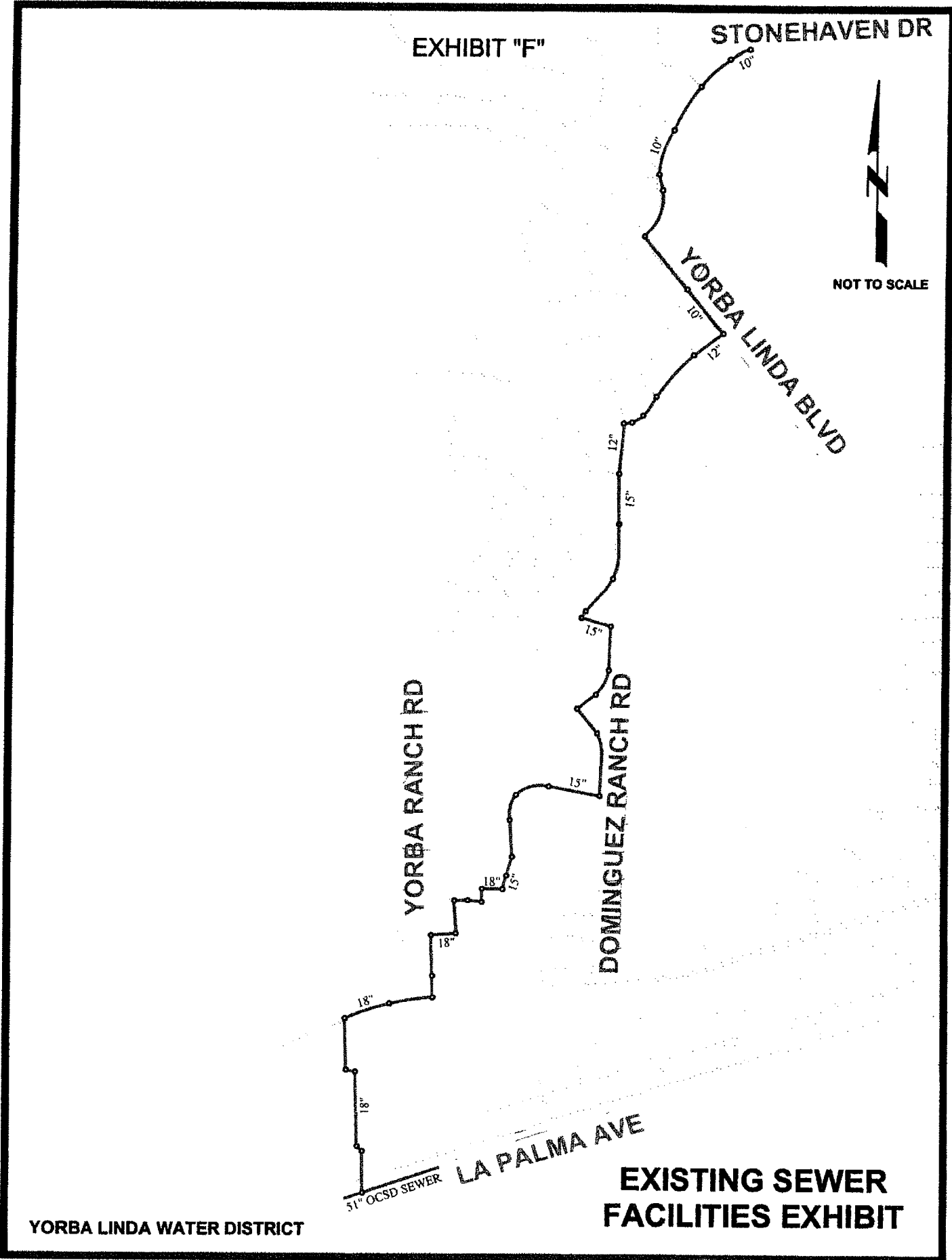


EXHIBIT "F"

STONEHAVEN DR

YORBA LINDA BLVD

YORBA RANCH RD

DOMINGUEZ RANCH RD

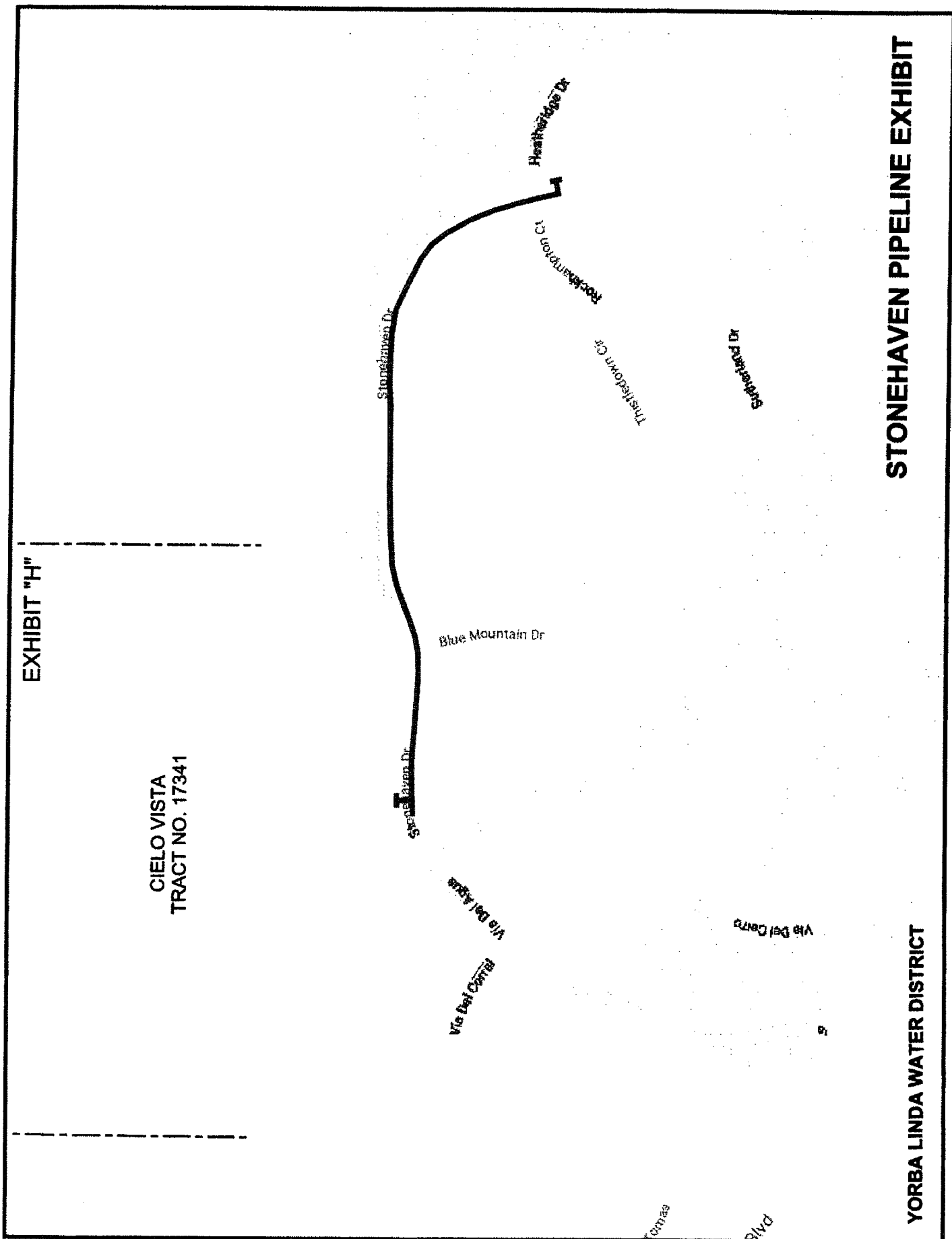
LA PALMA AVE

51" OCSD SEWER

NOT TO SCALE

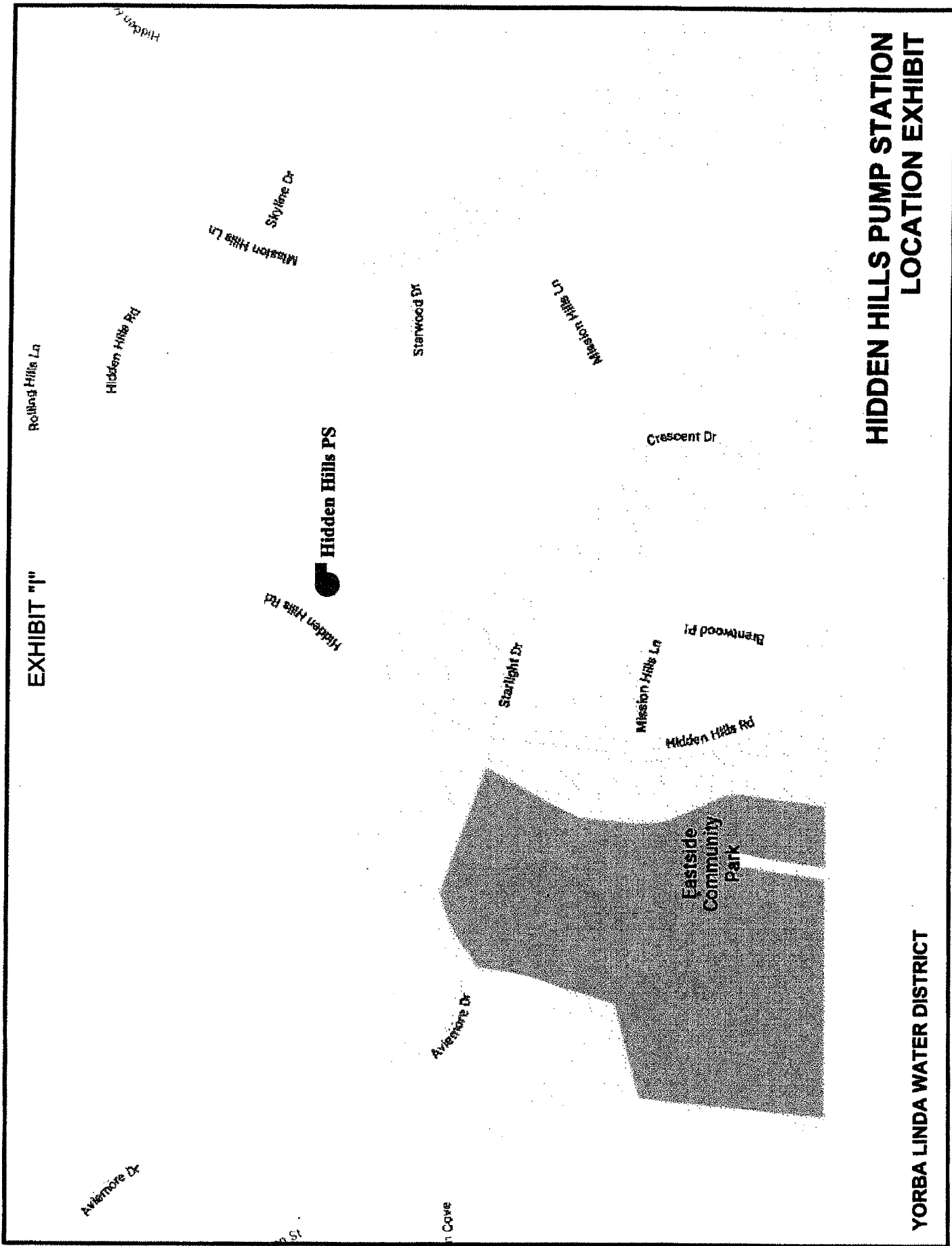
**EXISTING SEWER
FACILITIES EXHIBIT**

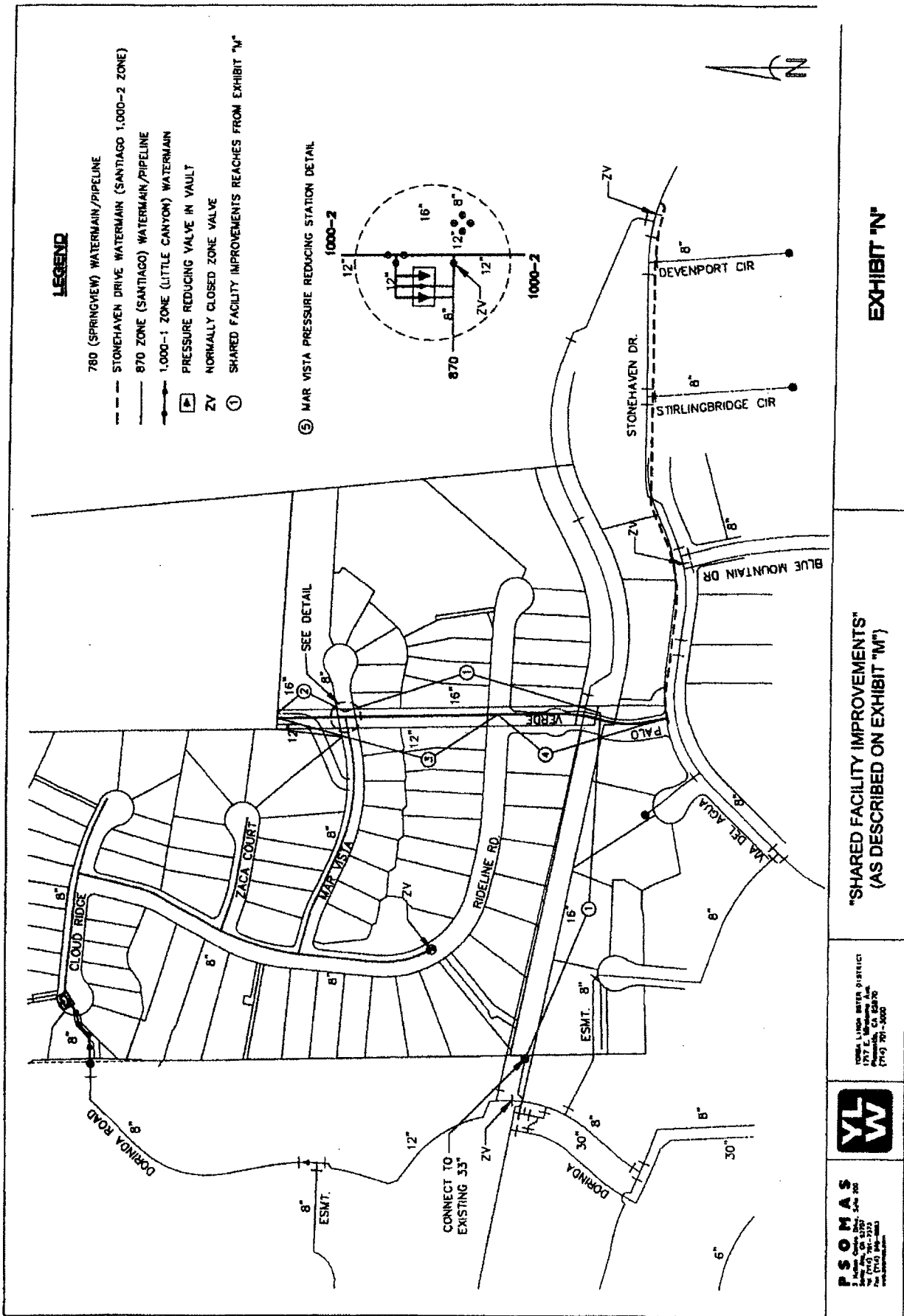
YORBA LINDA WATER DISTRICT



STONEHAVEN PIPELINE EXHIBIT

YORBA LINDA WATER DISTRICT





LEGEND

- 780 (SPRINGVIEW) WATERMAIN/PIPELINE
- STONEHAVEN DRIVE WATERMAIN (SANTIAGO 1,000-2 ZONE)
- 870 ZONE (SANTIAGO) WATERMAIN/PIPELINE
- 1,000-1 ZONE (LITTLE CANYON) WATERMAIN
- PRESSURE REDUCING VALVE IN VAULT
- NORMALLY CLOSED ZONE VALVE
- ① SHARED FACILITY IMPROVEMENTS REACHES FROM EXHIBIT "M"

⑤ MAR VISTA PRESSURE REDUCING STATION DETAIL

EXHIBIT "N"

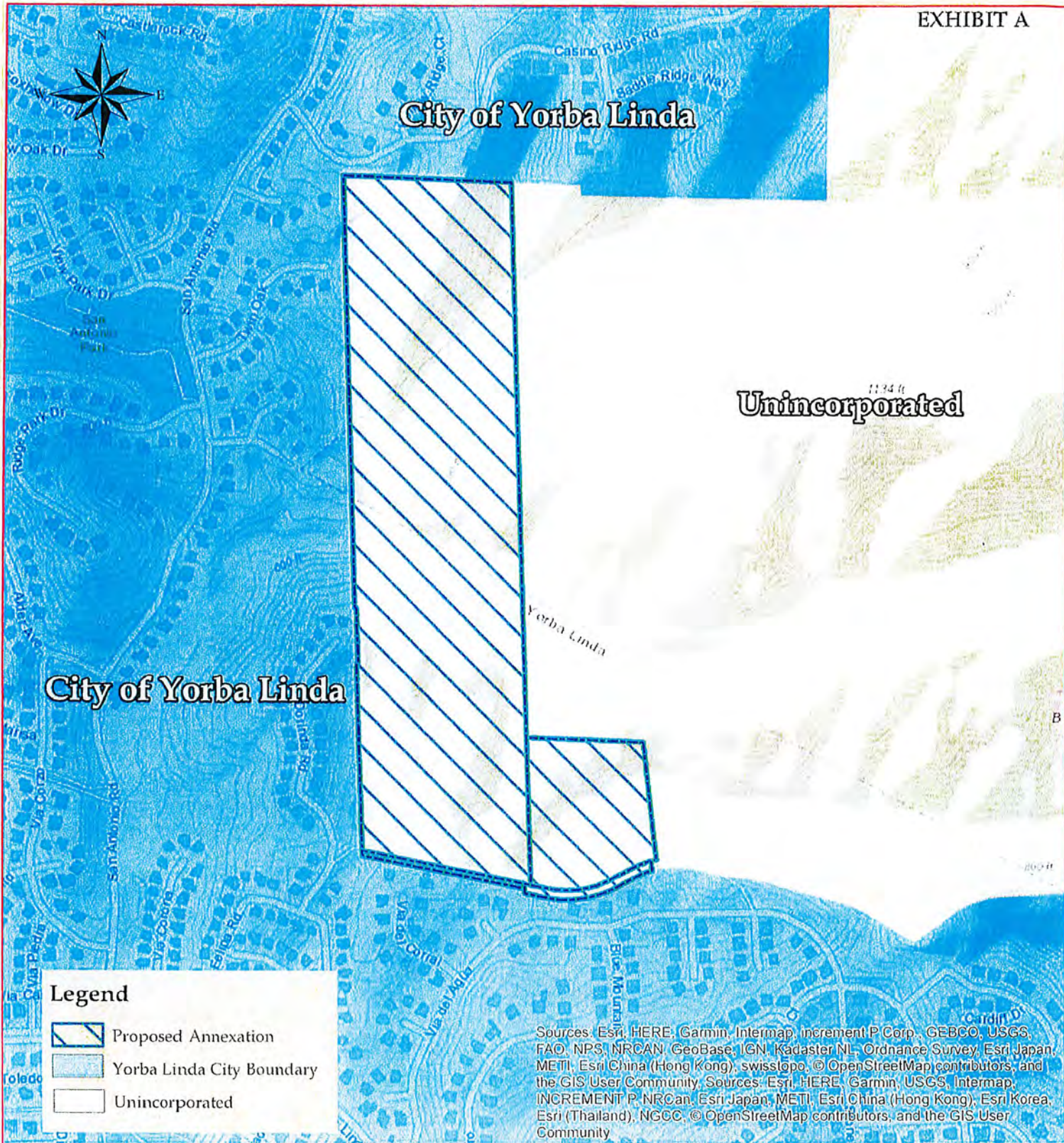
"SHARED FACILITY IMPROVEMENTS"
 (AS DESCRIBED ON EXHIBIT "M")

YVES LINDA WATER DISTRICT
 1747 E. 15th Ave.
 P.O. Box 1000
 (714) 781-3000



P S O M A S
 1400 S. Bascom Ave. Suite 200
 San Jose, CA 95128
 (408) 938-2000
 www.psomasonline.com

EXHIBIT A



City of Yorba Linda Annexation of
 Cielo Vista Development (CA 19-03)



EXHIBIT C

EXHIBIT "B"
TRAIL ALIGNMENTS

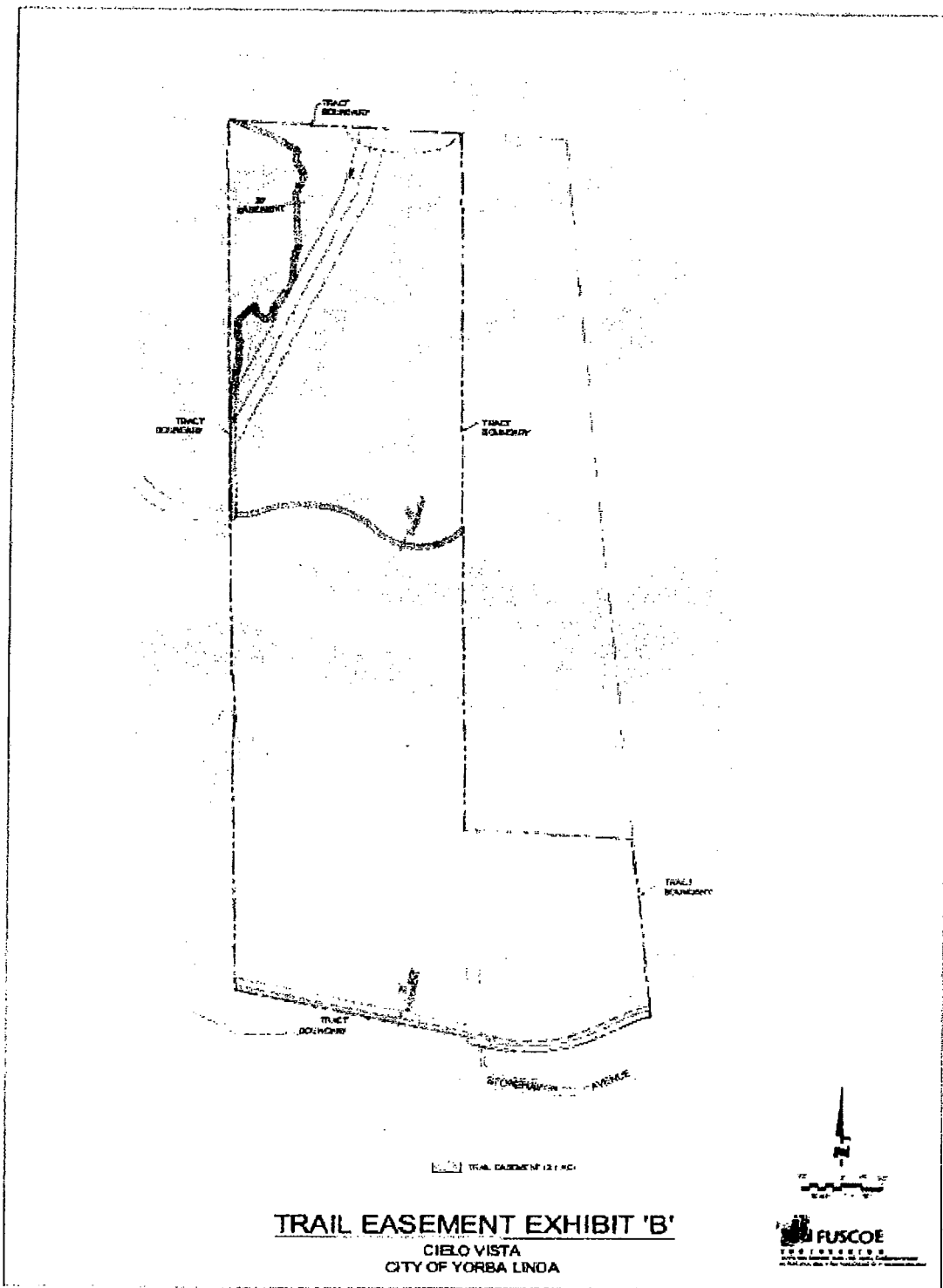


EXHIBIT B

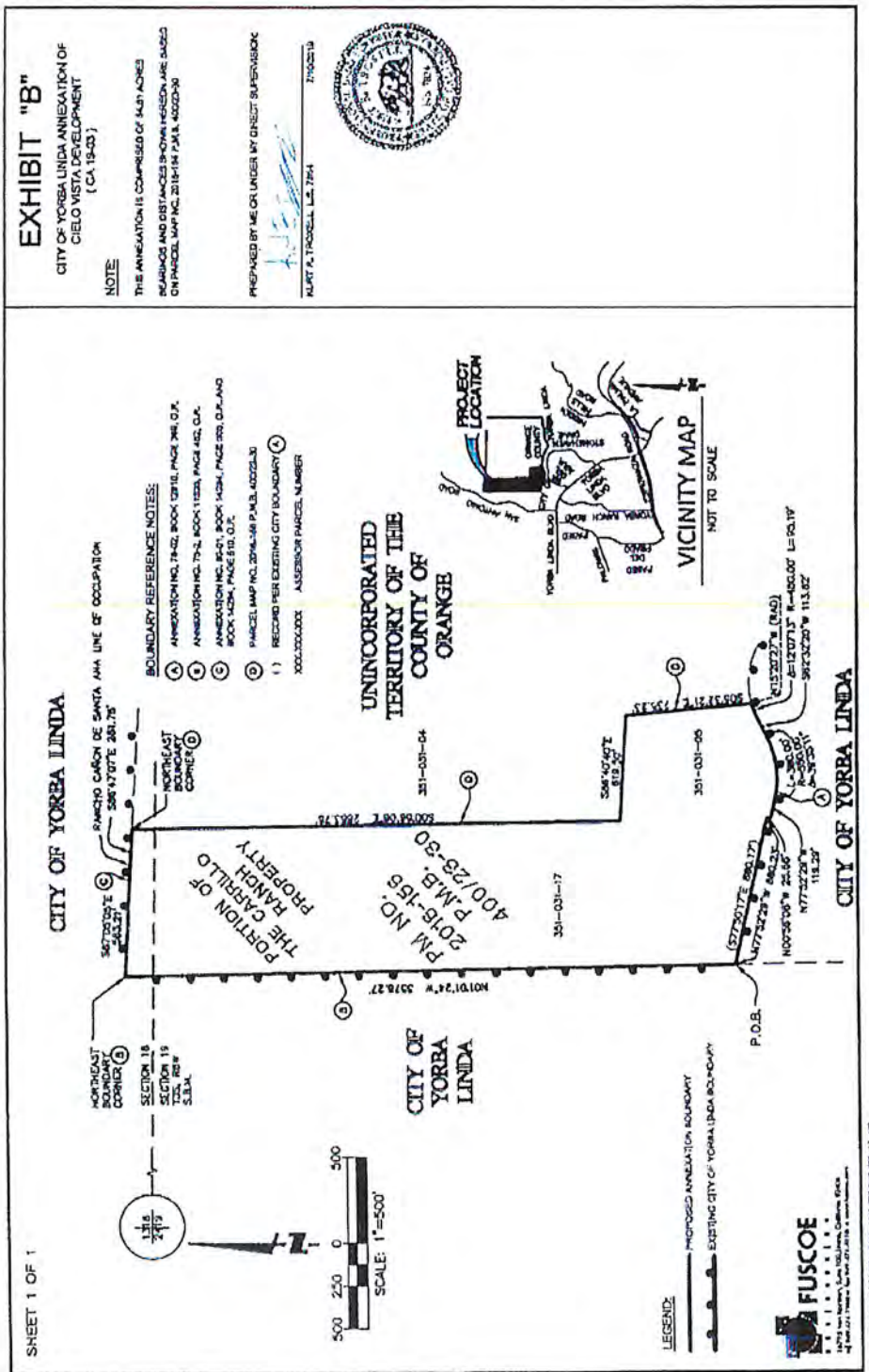
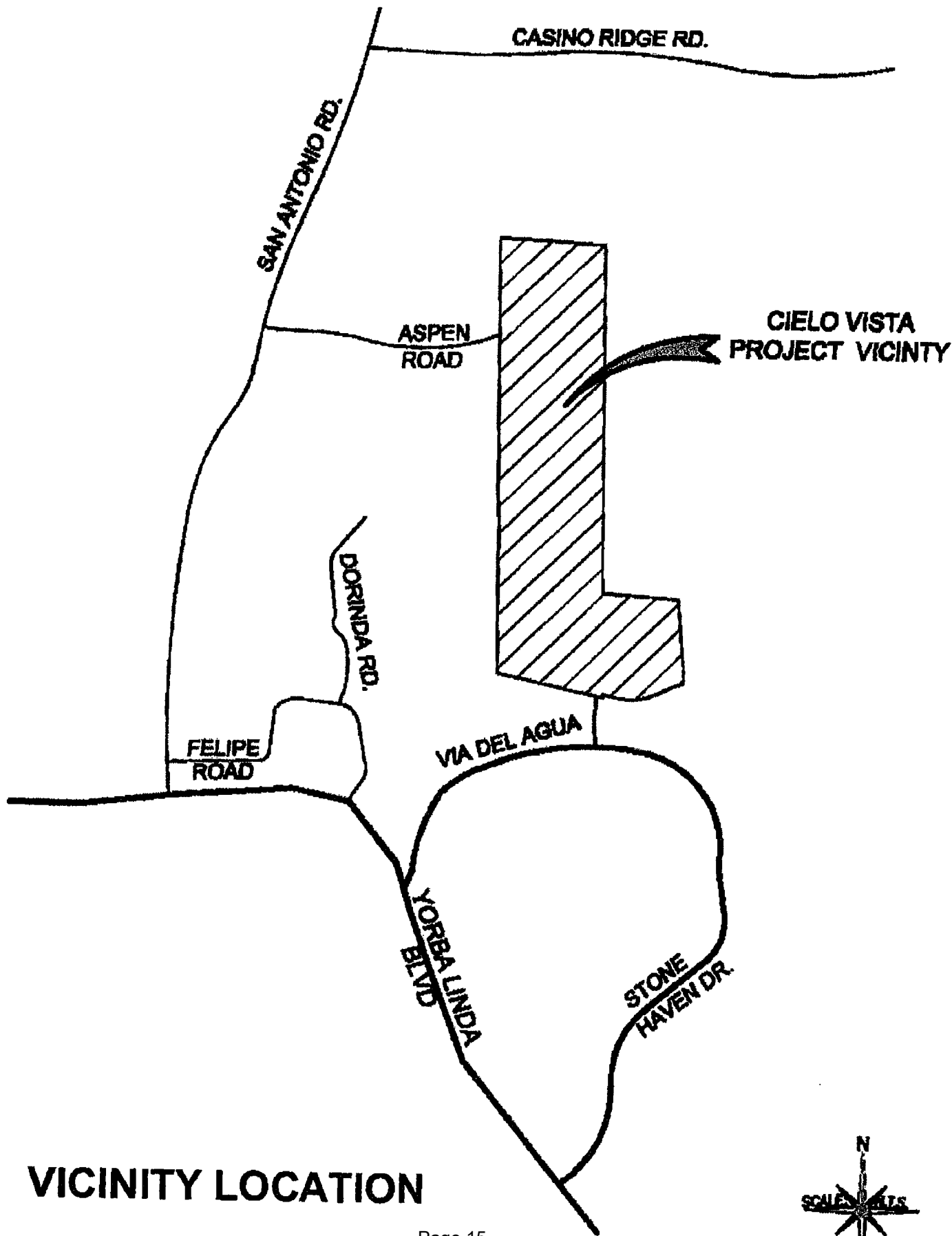


EXHIBIT "A"

EXHIBIT E



VICINITY LOCATION



EXHIBIT E

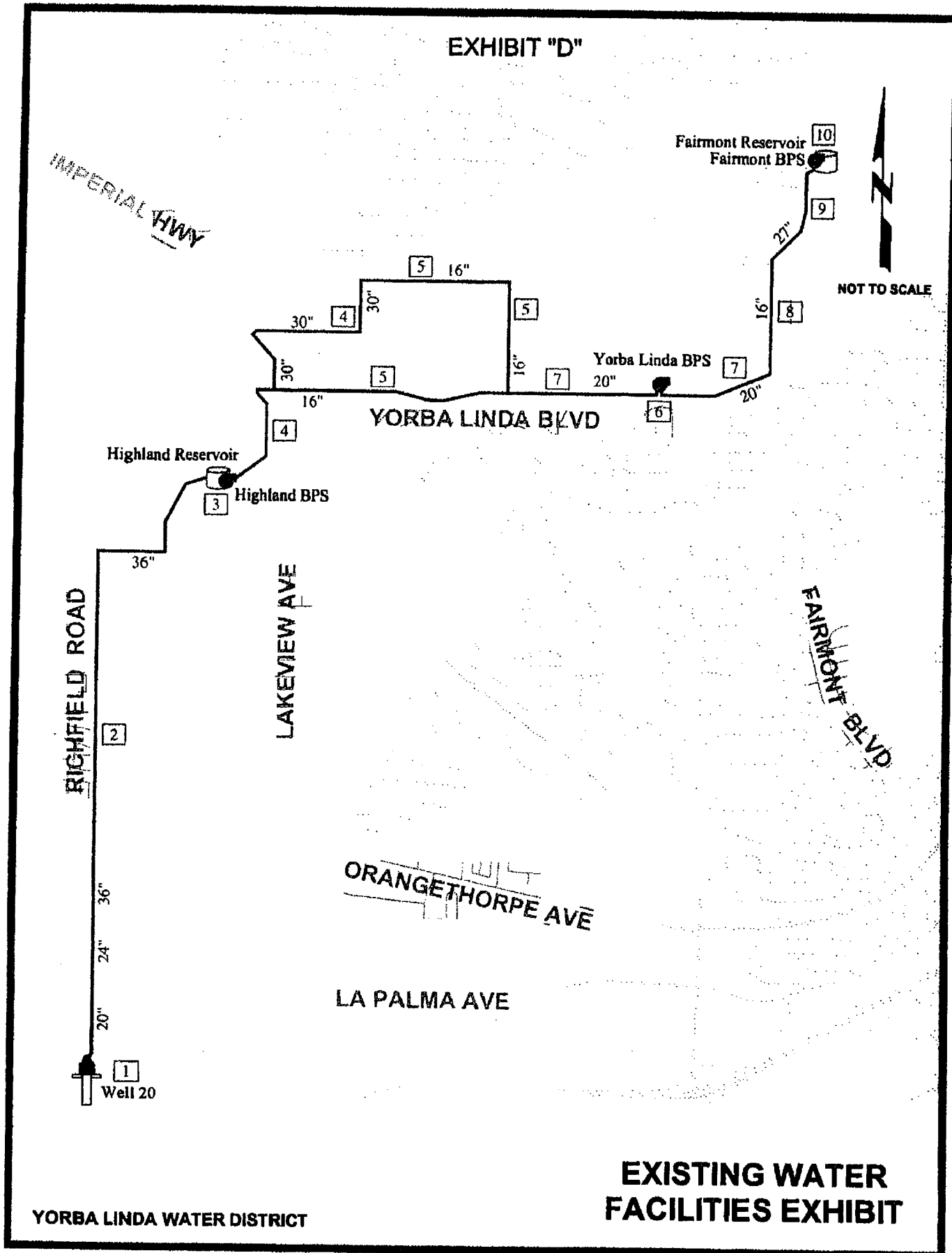


EXHIBIT E

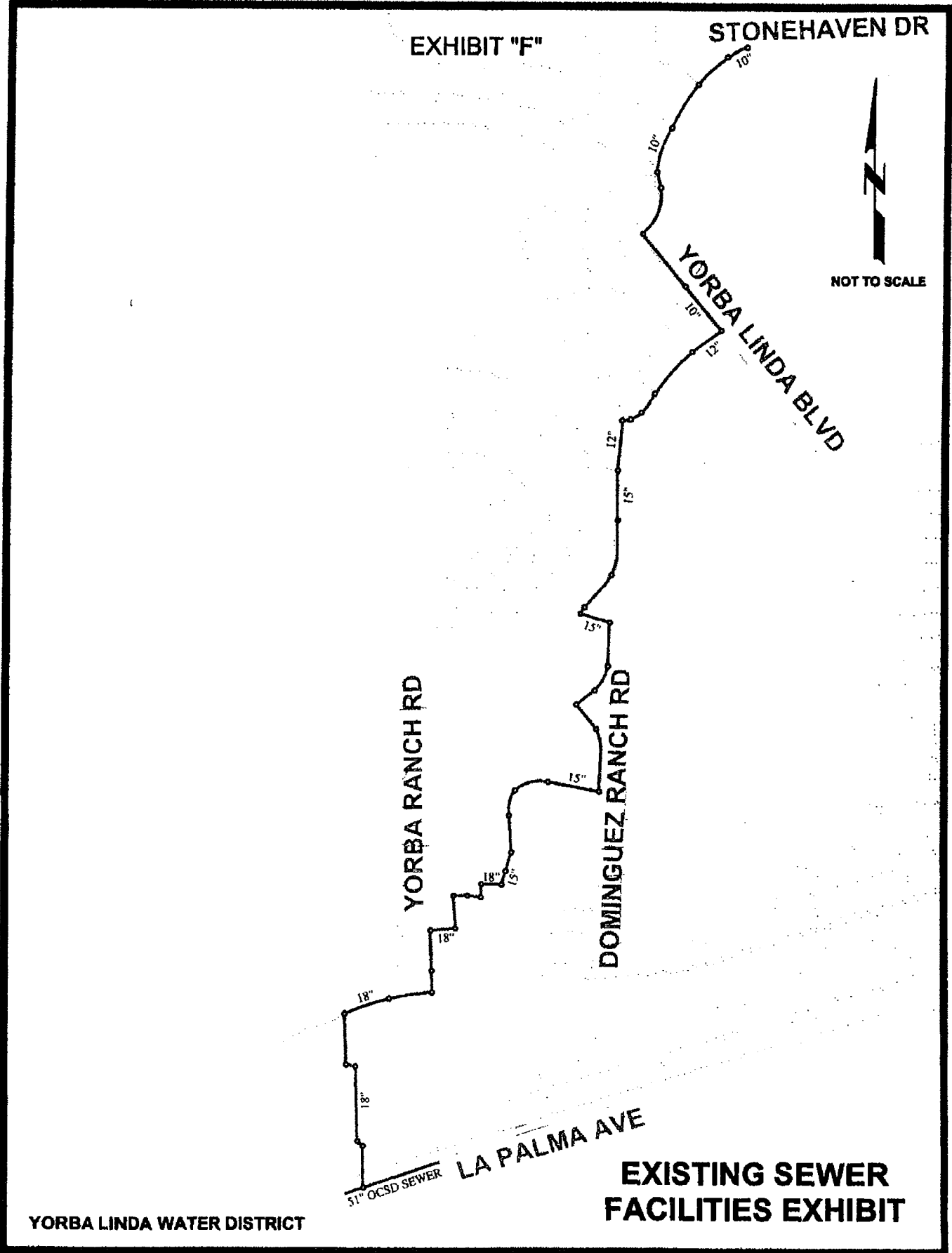


EXHIBIT E

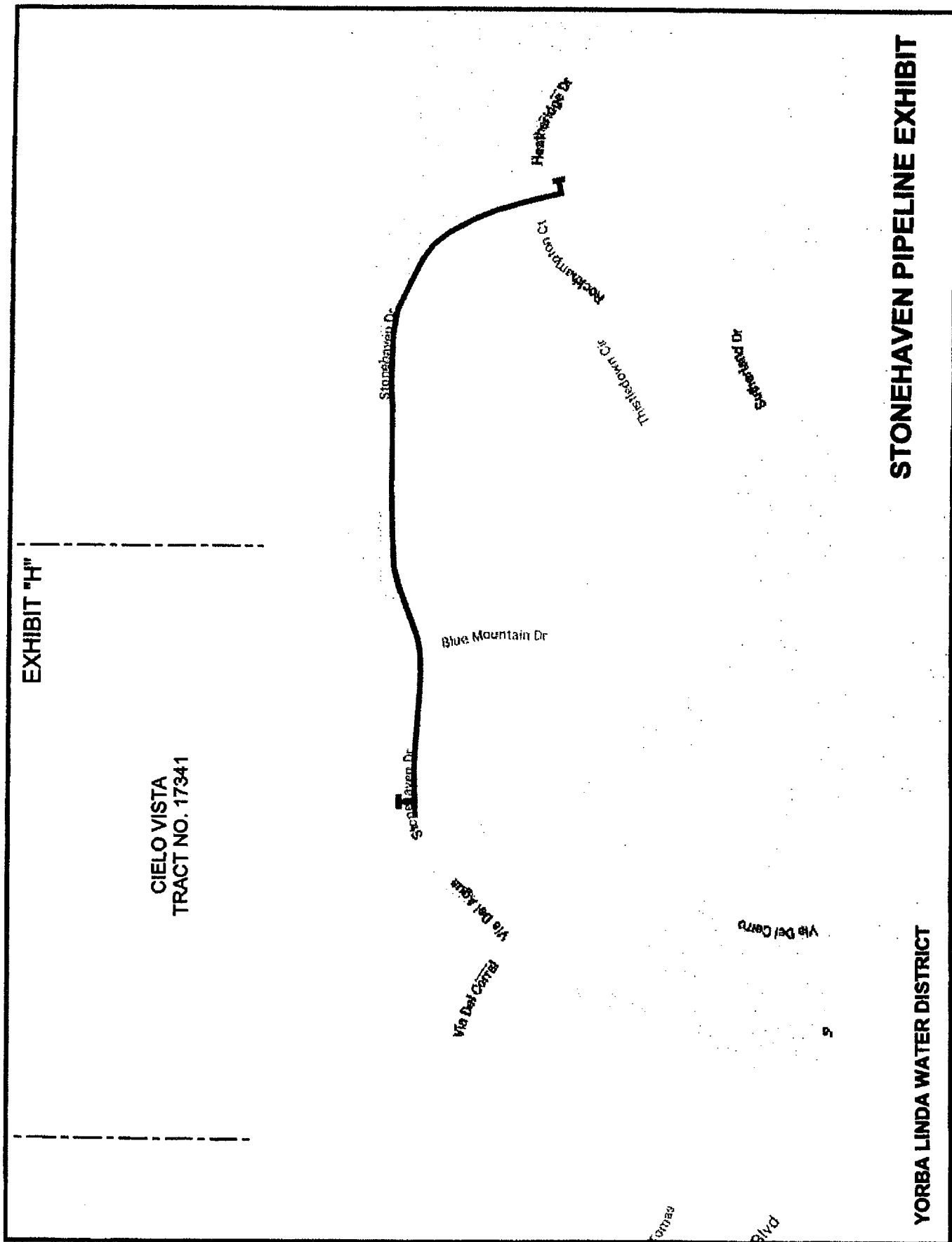


EXHIBIT E

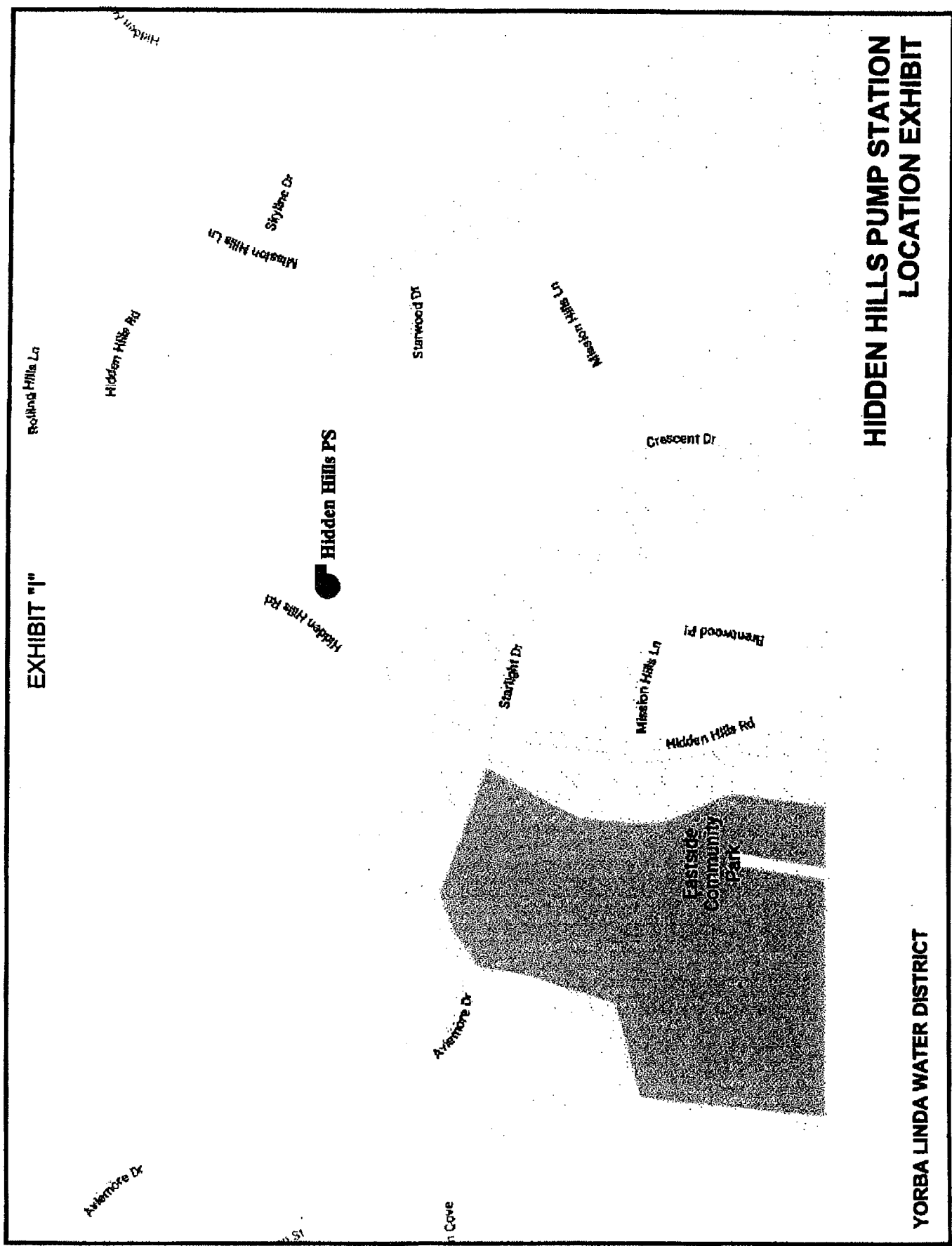
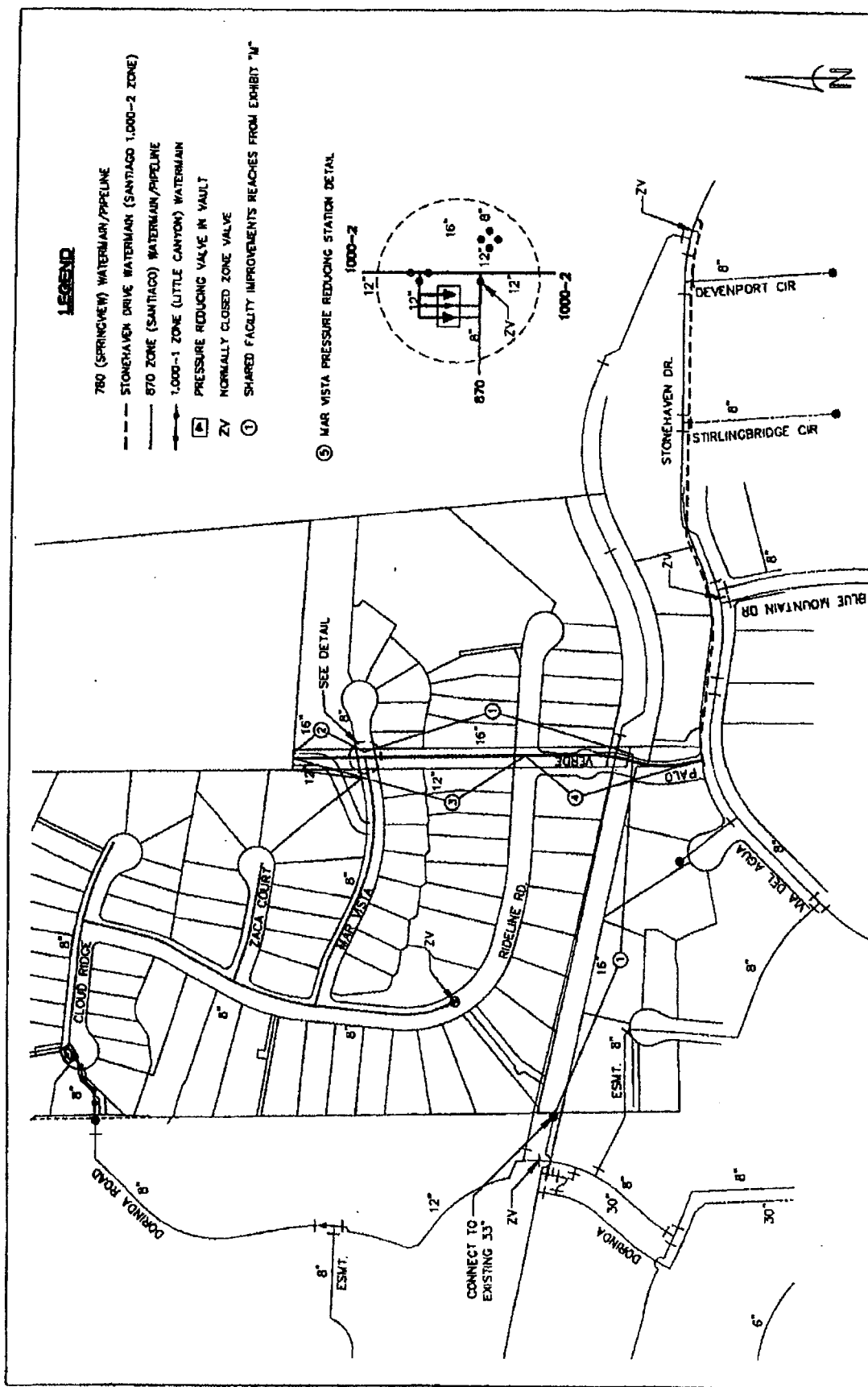


EXHIBIT E



LEGEND

- 780 (SPRINGVIEW) WATERMAIN/PIPELINE
- STONEHAVEN DRIVE WATERMAIN (SANTIAGO 1,000-2 ZONE)
- 870 ZONE (SANTIAGO) WATERMAIN/PIPELINE
- 1,000-1 ZONE (LITTLE CANYON) WATERMAIN
- PRESSURE REDUCING VALVE IN VAULT
- NORMALLY CLOSED ZONE VALVE
- ① SHARED FACILITY IMPROVEMENTS REACHES FROM EXHIBIT "M"

⑤ MAR VISTA PRESSURE REDUCING STATION DETAIL

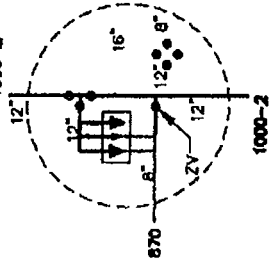


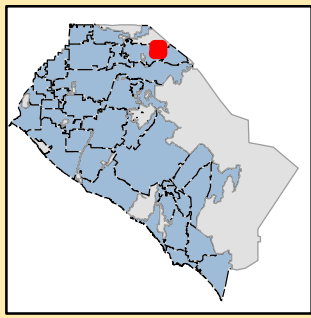
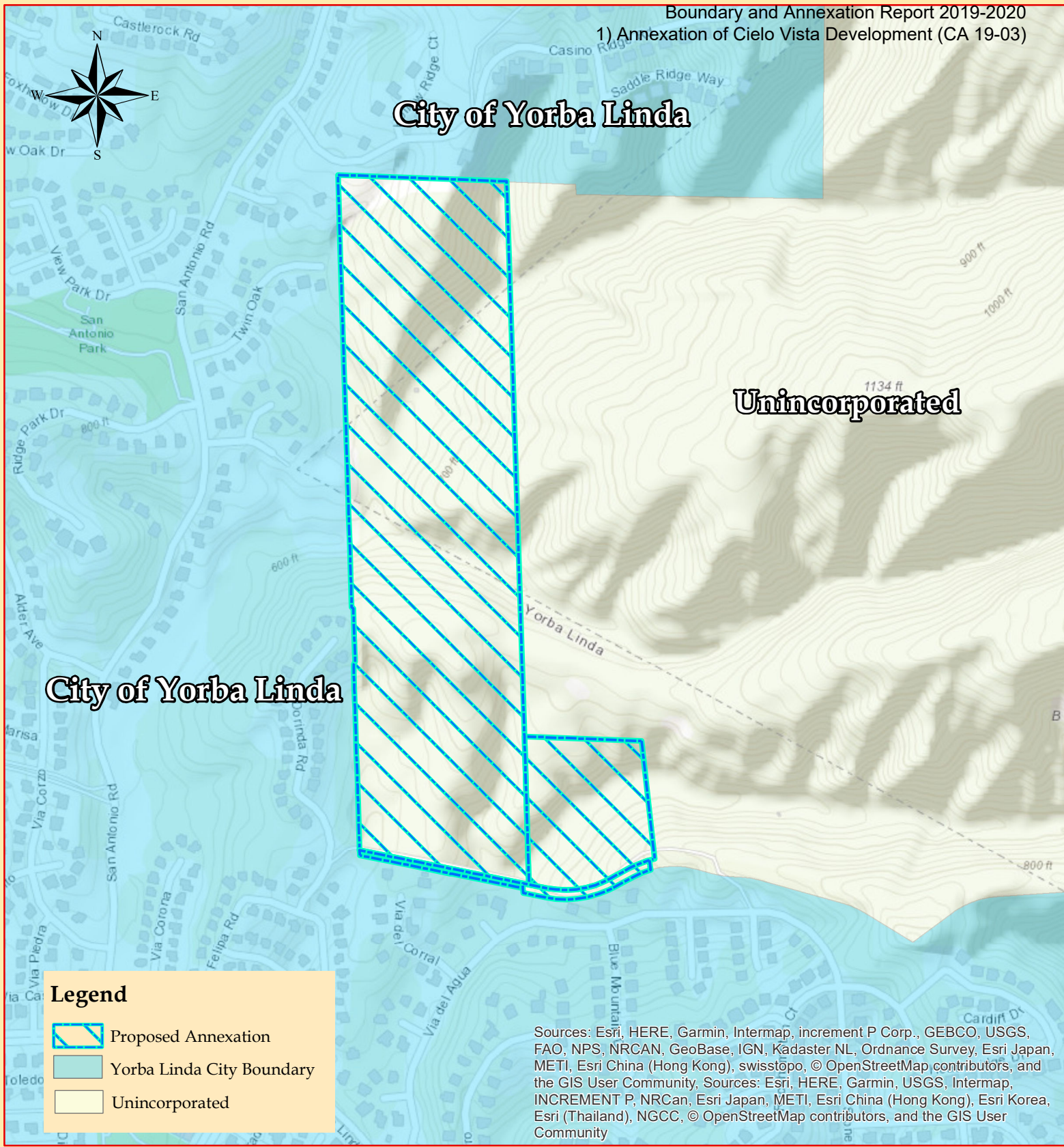
EXHIBIT "N"

"SHARED FACILITY IMPROVEMENTS"
 (AS DESCRIBED ON EXHIBIT "M")

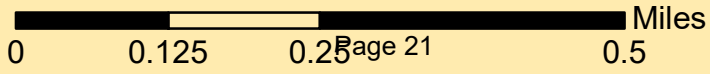
WATER LINE WITH PATENT
 1977 L. W. WATSON, JR.
 1977 U.S. PATENT NO. 4,011,000
 (PH) 704-388-1000



P S O M A S
 ENGINEERS
 1000 S. GARDEN AVENUE
 SUITE 100
 ANAHEIM, CALIFORNIA 92810
 (714) 933-8888

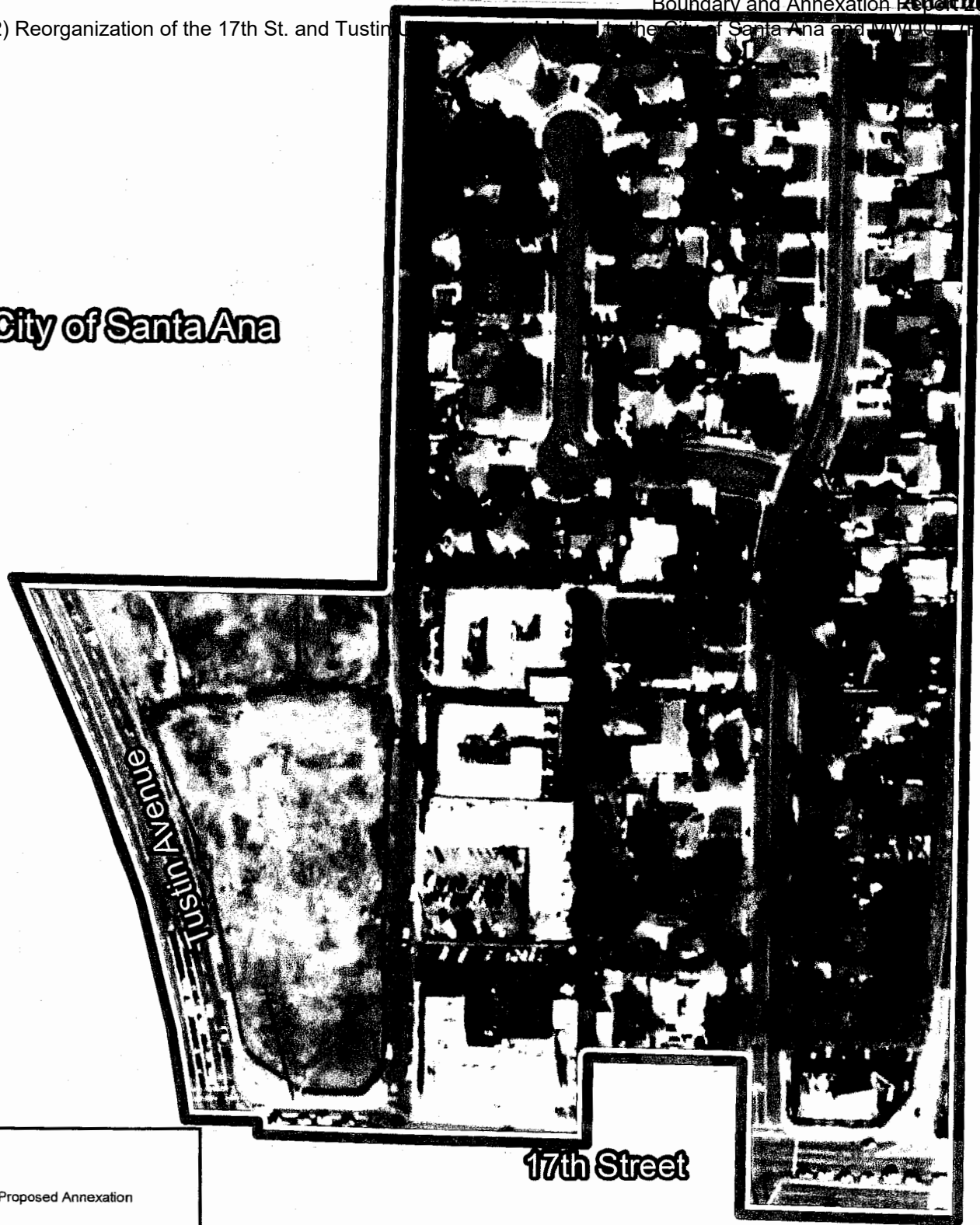


City of Yorba Linda Annexation of Cielo Vista Development (CA 19-03)


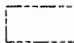



City of Santa Ana

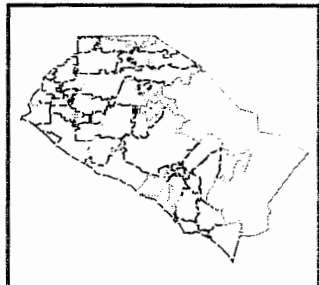
City of Tustin



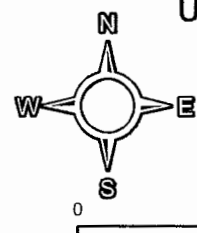
Legend

-  Proposed Annexation
-  SANTA ANA
-  TUSTIN

Source: Esri, DigitalGlobe, GeoEye, Earthstar Geographics, CNES/Airbus DS, USDA, USGS, AeroGRID, IGN, and the GIS User Community



Reorganization of 17th Street and Tustin
Unincorporated Island to the City of Santa Ana
and Municipal Water District of
Orange County (RO 19-07)



Vicinity Map
Page 21 0.08
Miles



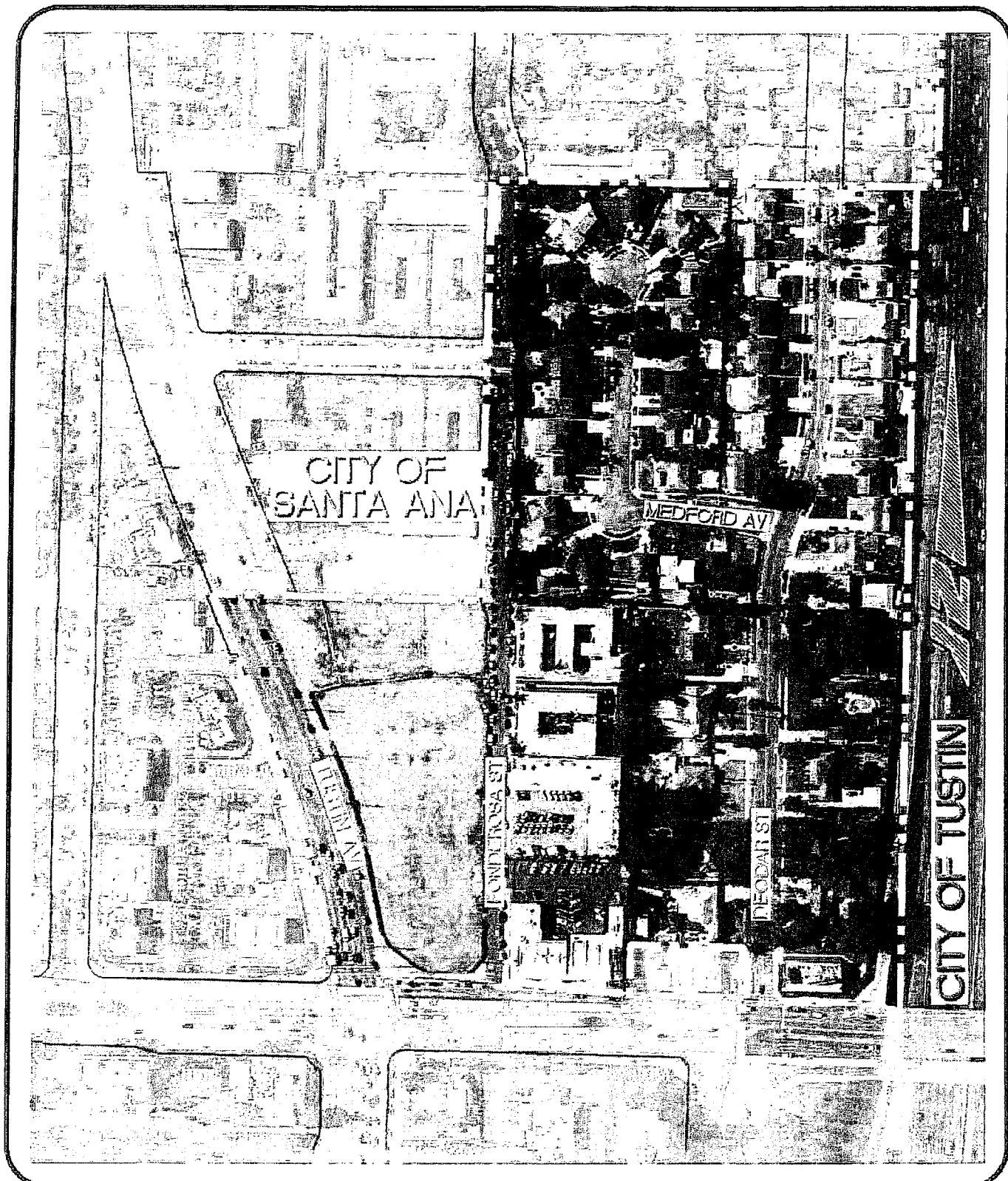


EXHIBIT 2
CITY OF SANTA ANA 17TH STREET ISLAND - VICINITY MAP

2) Reorganization of the 17th St. and Tustin Unincorporated Island to the City of Santa Ana and MWDOC (RO 19-07)

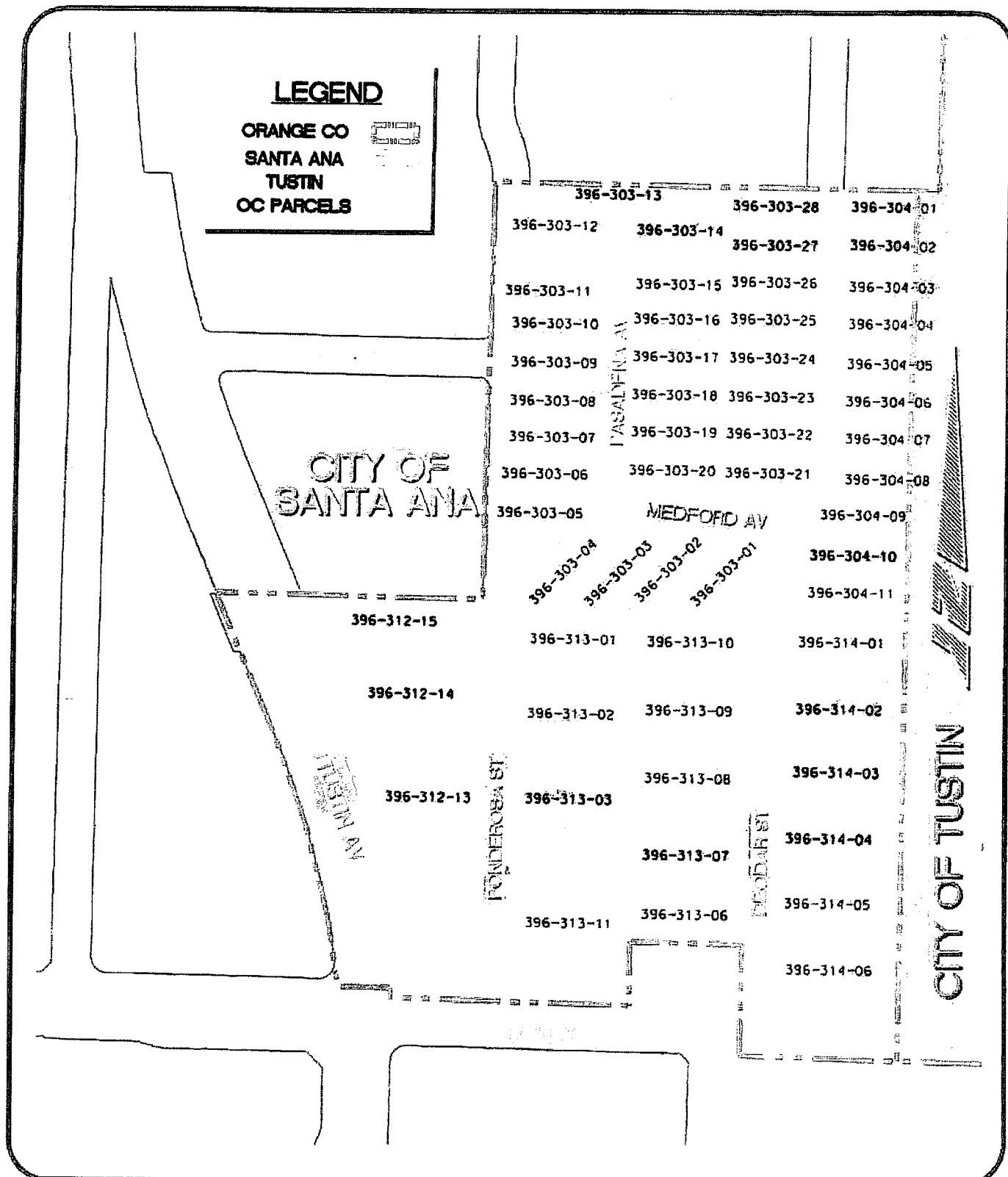
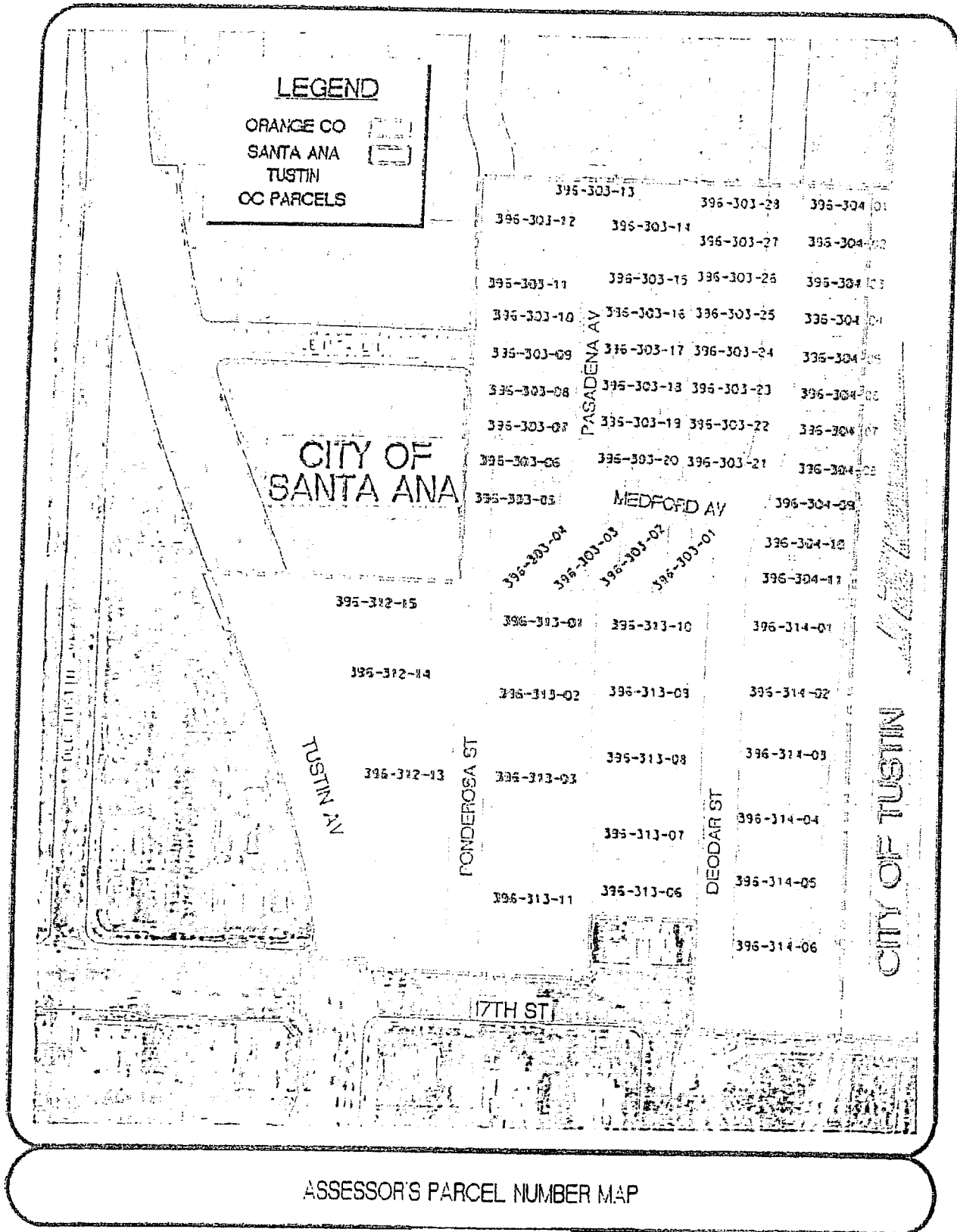
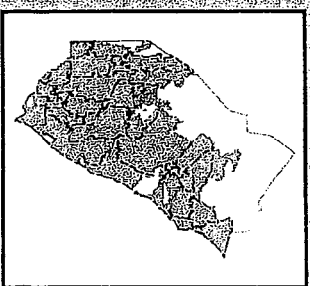
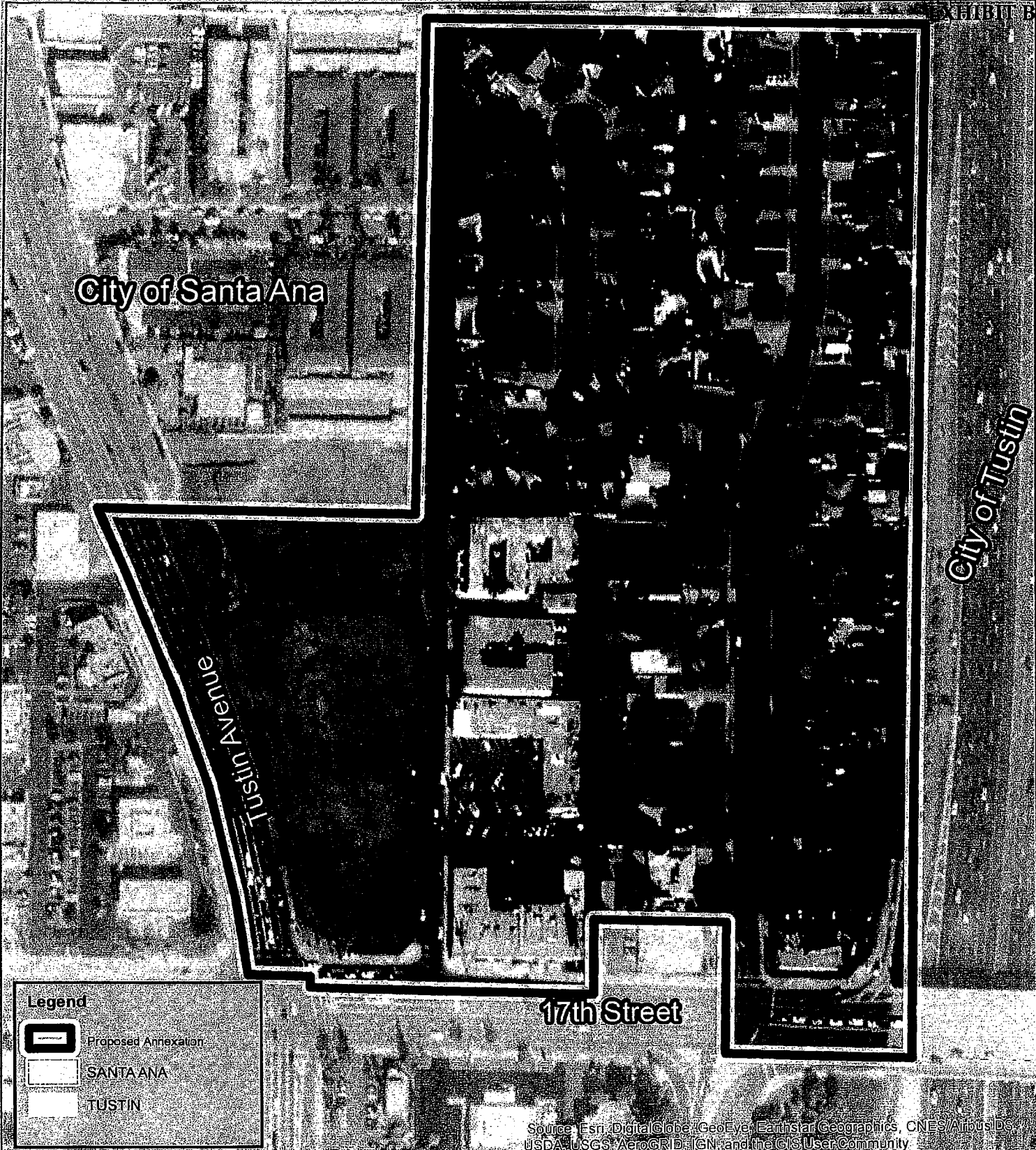


EXHIBIT 3
ASSESSOR'S PARCEL NUMBER MAP

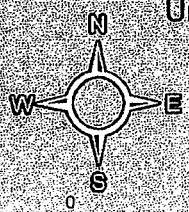


2) Reorganization of the 17th St. and Tustin Unincorporated Island to the City of Santa Ana and MWD of Orange County (RO 19-07)

EXHIBIT B



Reorganization of 17th Street and Tustin
Unincorporated Island to the City of Santa Ana
and Municipal Water District of
Orange County (RO 19-07)



Vicinity Map
0 0.08
Page 25 1 Miles



EXHIBIT C

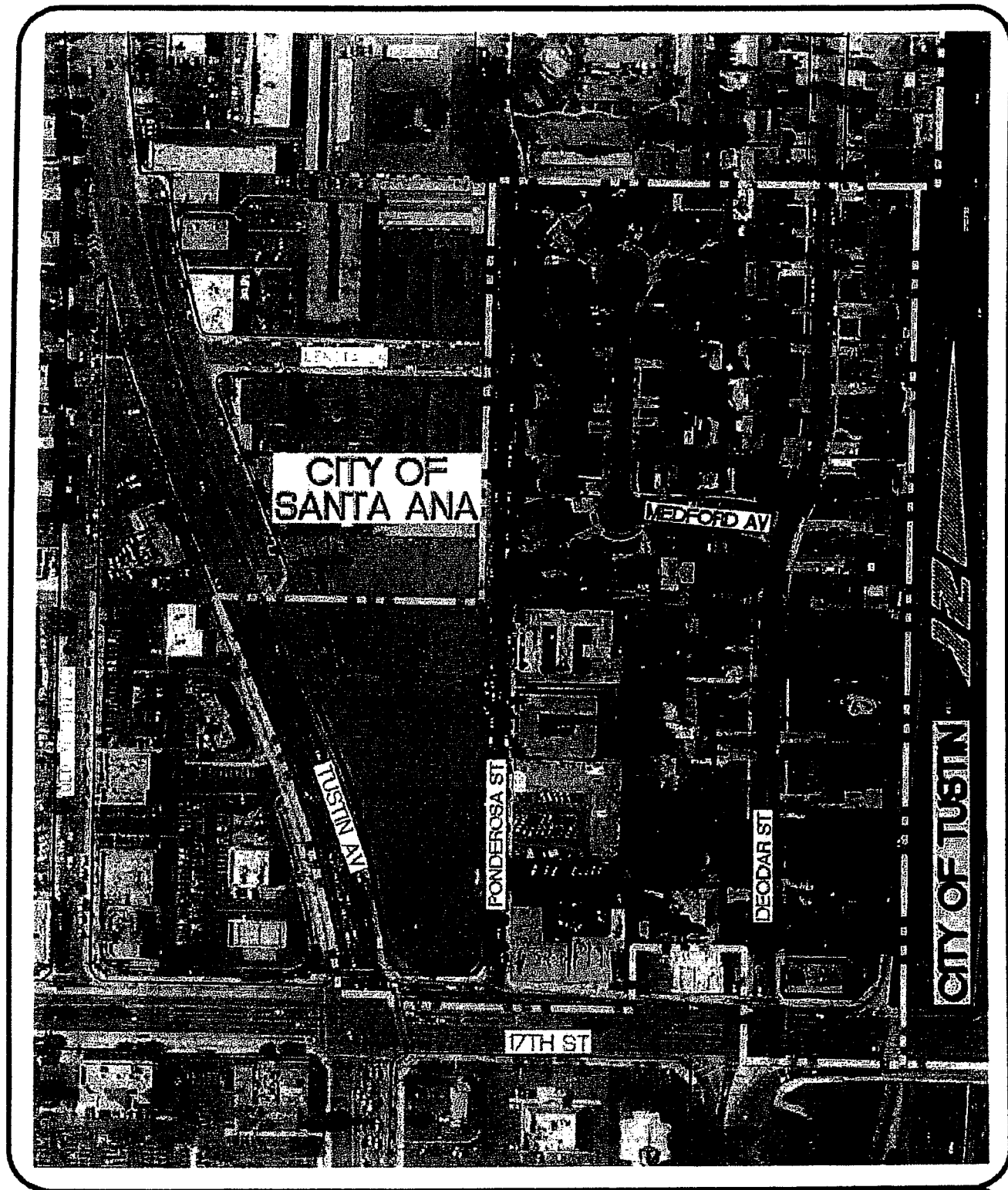


EXHIBIT 2

CITY OF SANTA ANA 17TH STREET ISLAND - VICINITY MAP

EXHIBIT C

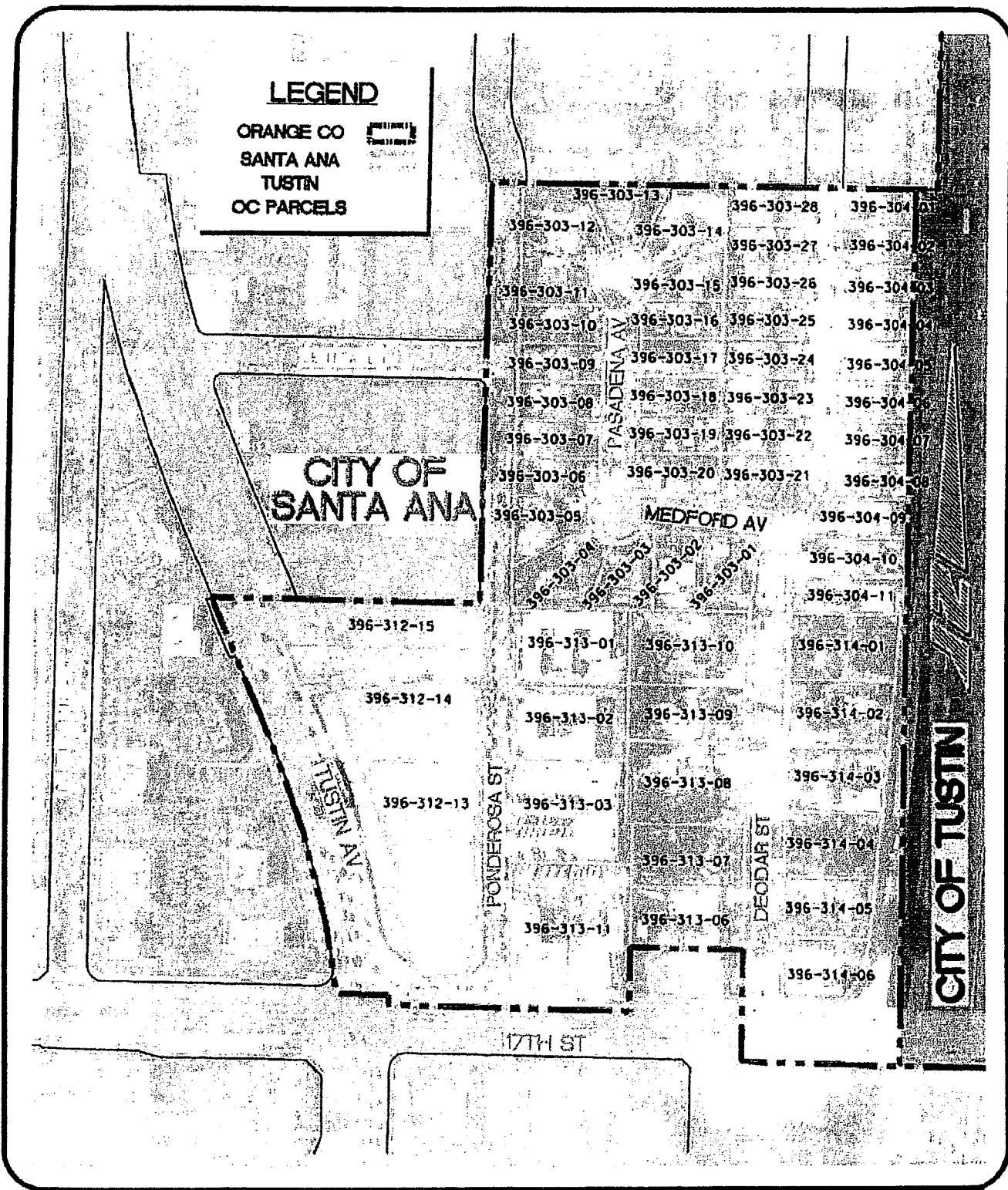


EXHIBIT 3
ASSESSOR'S PARCEL NUMBER MAP

2) Reorganization of the 17th St. and Tustin Unincorporated Island to the City of Santa Ana and MWDOC (RO 19-07)

“Reorganization of the 17th Street and Tustin Unincorporated Island to the City of Santa Ana and Municipal Water District of Orange County (RO 19-07)”

November 13, 2019

Page 3 of 6

Figure 1

17th Street and Tustin Unincorporated Island

- **Population: 275**
- **Land Use: Residential and Commercial**
- **Acreage: 24.79**

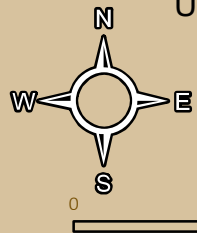
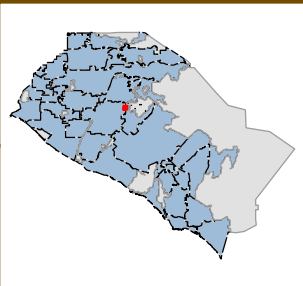


Annexation of the Island would allow the extension of efficient municipal services (i.e., police, planning, water, and wastewater) to the Island. An analysis of municipal service provision within the Island is discussed in the next section of this report. Additionally, State law requires the Commission to review and consider several factors and make determinations for the proposed reorganization. The details of all the factors considered in the review of this proposal are presented in Attachment A.

Municipal Service Provision

The County of Orange is the current service provider of several municipal services to the Island. In accordance with one of its statutory mandates, the Commission is required to establish a Sphere of Influence (SOI) for each Orange County city and special district. SOIs are used to identify probable and physical boundaries and service areas of local government agencies. Additionally, OC LAFCO has established agency SOIs to encourage the efficient, effective and equitable delivery of municipal services to Orange County residents.

Attachment



Reorganization of 17th Street and Tustin Unincorporated Island to the City of Santa Ana and Municipal Water District of Orange County (RO 19-07)



2) Reorganization of the 17th St. and Tustin Unincorporated Island to the City of Santa Ana and MWDOC (RO 19-07)



EXHIBIT 2
CITY OF SANTA ANA 17TH STREET ISLAND - VICINITY MAP

2) Reorganization of the 17th St. and Tustin Unincorporated Island to the City of Santa Ana and MWDOC (RO 19-07)

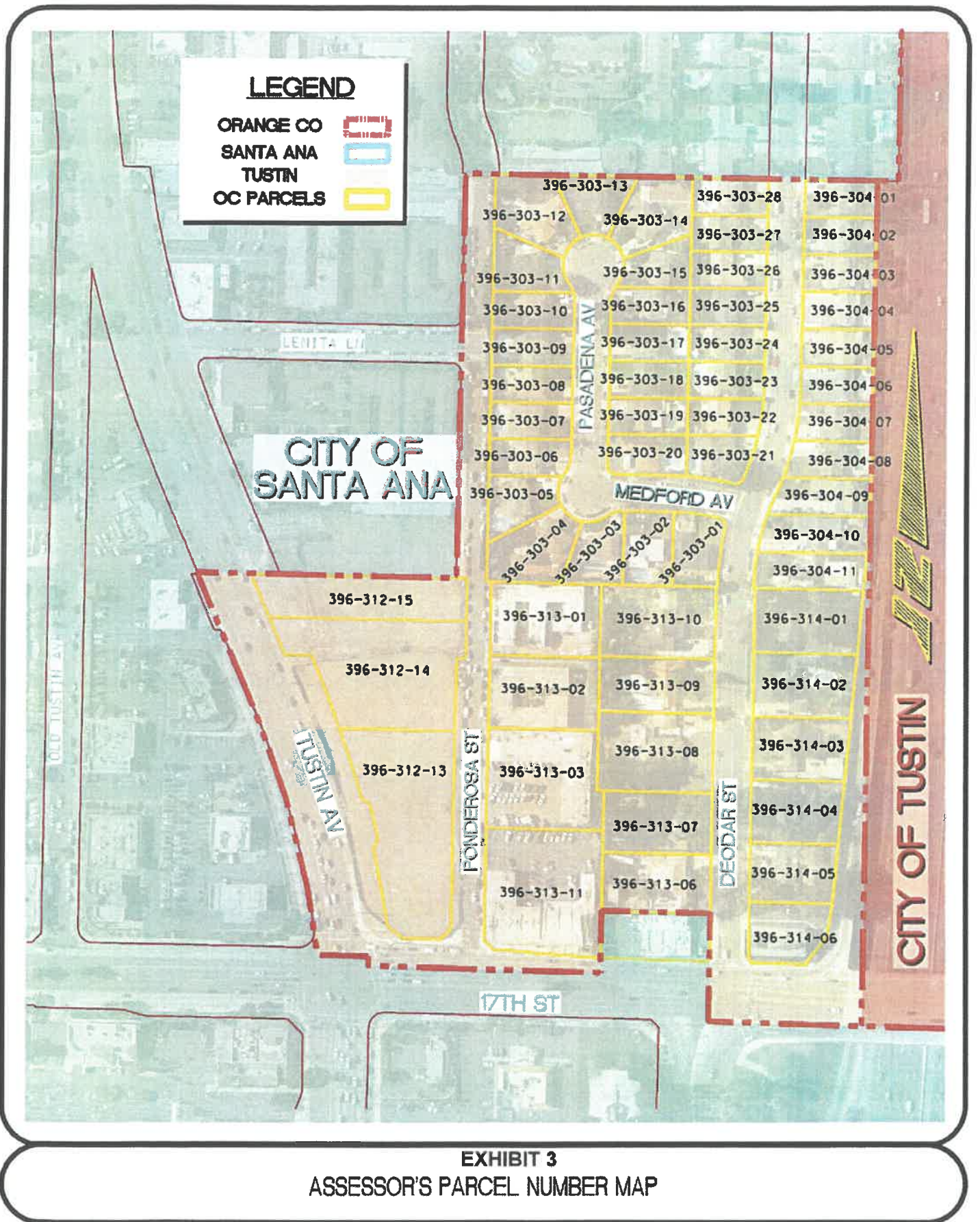


EXHIBIT 3

ASSESSOR'S PARCEL NUMBER MAP