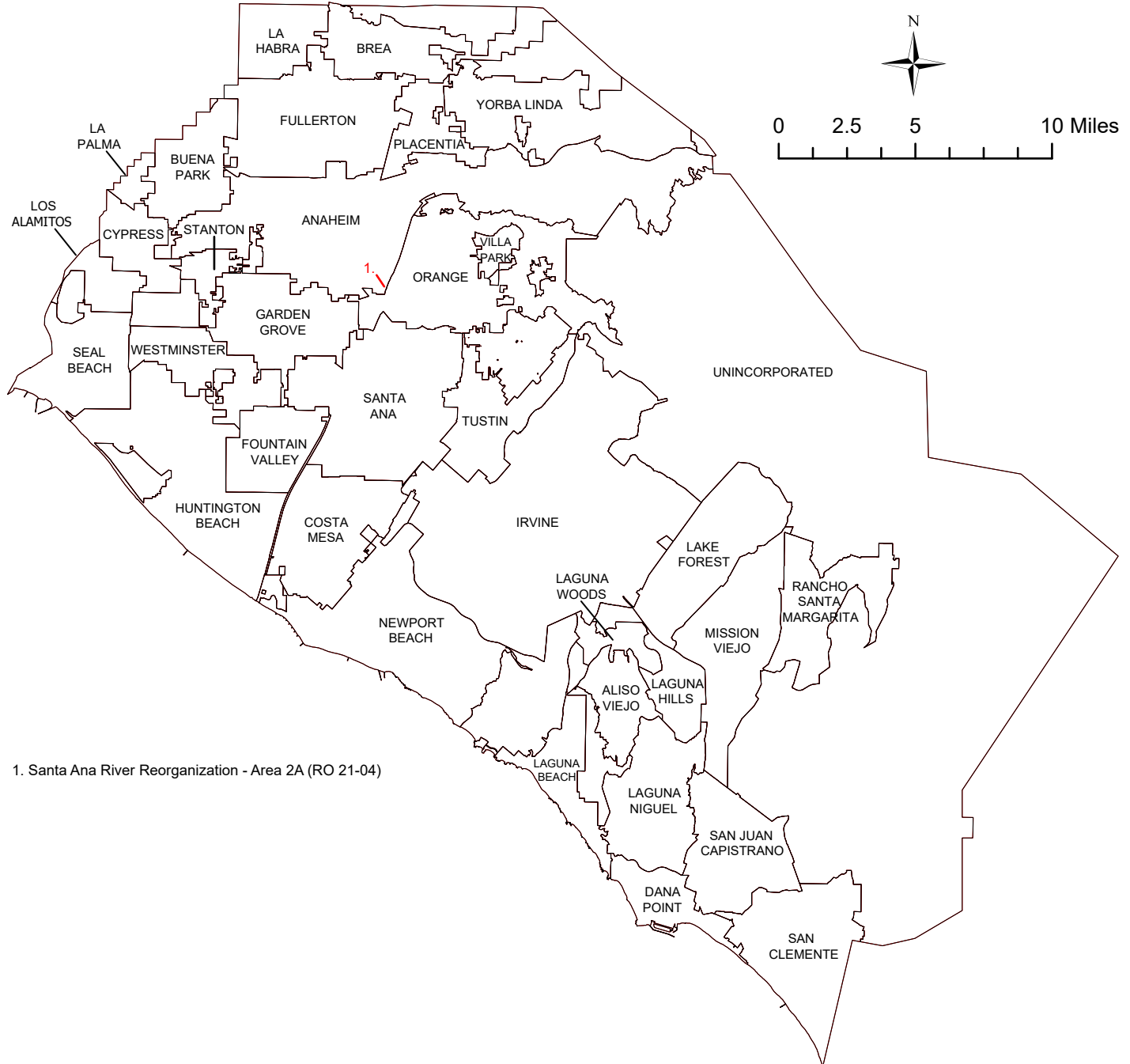
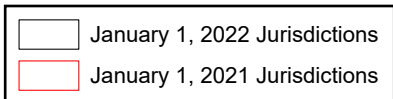


# Orange County Boundary and Annexation Report 2021-2022 (January 1)



1. Santa Ana River Reorganization - Area 2A (RO 21-04)



Source: OC Geomatics, 2021 & 2022  
 Note: Coastal boundary represents mean high tide circa 2015. Coastal boundary approximated by CDR GIS staff.

**Orange County Boundary and Annexation Report 2021-2022**

Jurisdiction	Total Area (Square Miles)*		Area Change	Annexation
	January 1, 2021	January 1, 2022	2021-2022**	Reference #
Aliso Viejo	6.921	6.921	0	
Anaheim	50.872	51.222	0.350	1
Brea	12.221	12.221	0	
Buena Park	10.550	10.550	0	
Costa Mesa	15.849	15.849	0	
Cypress	6.622	6.622	0	
Dana Point	6.602	6.602	0	
Fountain Valley	9.065	9.065	0	
Fullerton	22.447	22.447	0	
Garden Grove	17.925	17.925	0	
Huntington Beach	27.612	27.612	0	
Irvine	65.969	65.969	0	
Laguna Beach	8.932	8.932	0	
Laguna Hills	6.647	6.647	0	
Laguna Niguel	14.787	14.787	0	
Laguna Woods	3.306	3.306	0	
La Habra	7.573	7.573	0	
Lake Forest	16.785	16.785	0	
La Palma	1.804	1.804	0	
Los Alamitos	4.091	4.091	0	
Mission Viejo	18.009	18.009	0	
Newport Beach	25.987	25.987	0	
Orange	25.782	25.432	-0.350	1
Placentia	6.621	6.621	0	
Rancho Santa Margarita	12.938	12.938	0	
San Clemente	18.357	18.357	0	
San Juan Capistrano	14.407	14.407	0	
Santa Ana	27.391	27.391	0	
Seal Beach	11.880	11.880	0	
Stanton	3.105	3.105	0	
Tustin	11.137	11.137	0	
Villa Park	2.078	2.078	0	
Westminster	10.070	10.070	0	
Yorba Linda	20.000	20.000	0	
Unincorporated	275.469	275.469	0	
<b>Orange County</b>	<b>799.811</b>	<b>799.811</b>	<b>0</b>	

Source: O.C. Geomatics, 2021 & 2022

\*Area calculated in ArcGIS by CDR.

\*\*Annual area change totals may not match detailed annexation information due to rounding.

**Detailed Annexation List:**

- 1) Santa Ana River Reorganization - Area 2A (RO 21-04)  
Effective 5/26/2021  
From the City of Orange to the City of Anaheim  
Uninhabited  
0.350 acres (0.000546875 Sq. Miles)

**Notes:**

Benchmark 2015.

Some jurisdictions' legal boundary extends three miles off the coast.

A fixed boundary line at the coast was created in November 2014 based on high-resolution county-wide aerial imagery that was captured on June 19, 2013, to approximate the ocean waterline and to eliminate artificial land area changes to jurisdictions adjacent to the Orange County coast. This coast line does not define any vertical datum such as mean high tide, mean sea level, or mean lower low tide. This reference line was developed through a collaboration of OC Public Works, OC LAFCO, and CDR; it has no legal value; and its purpose is for CDR's use in reporting population density and jurisdictional annexations. For official legal boundaries, contact the County of Orange Surveyor's office <http://ocpublicworks.com/survey/>

*The preparation of this report has been financed in part through grant(s) from the Federal Highway Administration (FHWA) and Federal Transit Administration (FTA) through the U.S. Department of Transportation (DOT). The contents of this report reflect the views of the author who is responsible for the facts and accuracy of the data presented herein. The contents do not necessarily reflect the official views or policies of SCAG or DOT. This report does not constitute a standard, specification or regulation.*

# EXHIBIT "B"

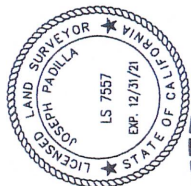
TO ACCOMPANY LEGAL DESCRIPTION  
 SANTA ANA RIVER REORGANIZATION BETWEEN THE  
 CITY OF ANAHEIM AND THE CITY OF ORANGE (RO 21-04)

## SURVEYOR'S STATEMENT

THIS PROPOSAL WAS PREPARED BY ME OR  
 UNDER MY DIRECTION.

DATED THIS 20TH DAY OF MAY, 2021

*Joseph Padilla*  
 JOSEPH PADILLA, P.L.S. No. 7557



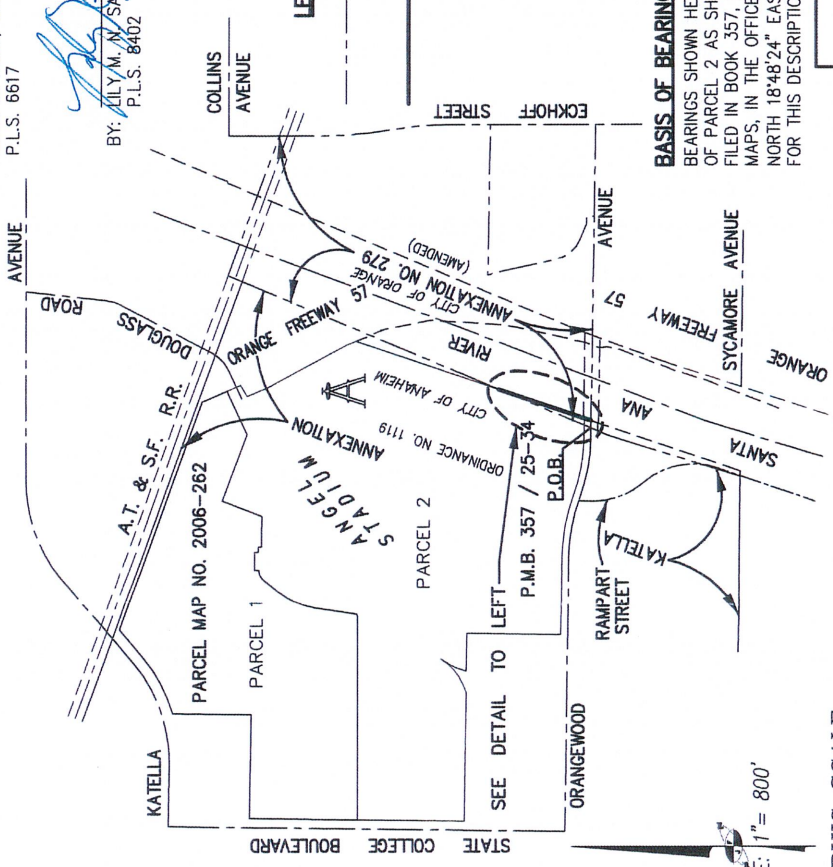
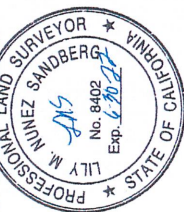
## COUNTY SURVEYOR'S STATEMENT

THIS DESCRIPTION AND MAP OF PROPOSED REORGANIZATION  
 DOES MEET THE APPROVAL OF THE ORANGE COUNTY  
 SURVEYOR'S OFFICE.

DATED THIS 22ND DAY OF MAY, 2021.

KEVIN R. HILLS, COUNTY SURVEYOR  
 P.L.S. 6617

*Lily M. Nunez Sandberg*  
 BY: LILY M. NUNEZ SANDBERG, DEPUTY COUNTY SURVEYOR  
 P.L.S. 8402



### LEGEND:

- EXISTING CITY OF ANAHEIM & CITY OF ORANGE CITY BOUNDARY LINE.
- PROPOSED CITY OF ANAHEIM & CITY OF ORANGE CITY BOUNDARY LINE.
- CITY OF ORANGE ANNEXATION NO. 279 (AMENDED) CERTIFIED BY THE SECRETARY OF STATE ON 12-16-71, RESOLUTION NO. 3537
- CITY OF ANAHEIM KATELLA ANNEXATION CERTIFIED BY THE SECRETARY OF STATE ON 3-39-57, ORDINANCE NO. 1119.

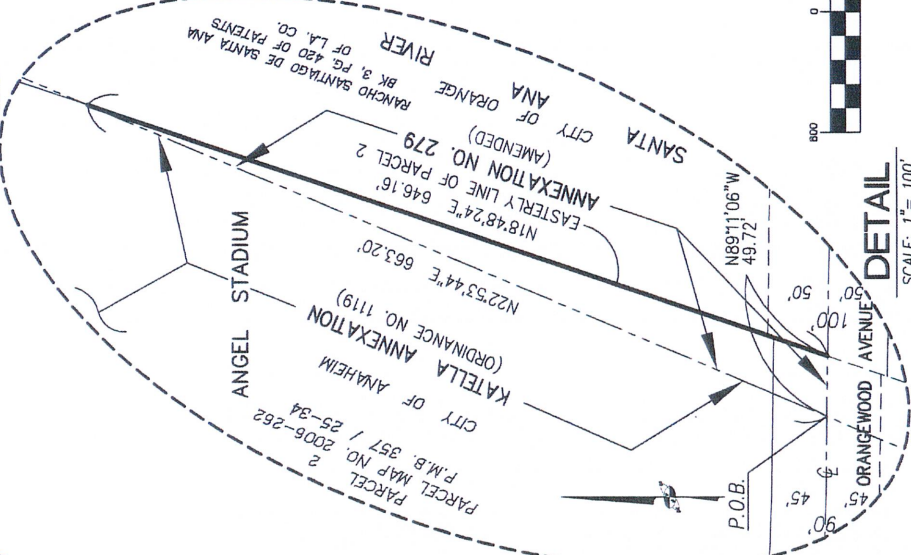
### BASIS OF BEARINGS

BEARINGS SHOWN HEREON ARE BASED ON THE EASTERLY LINE OF PARCEL 2 AS SHOWN ON PARCEL MAP NO. 2006-262, FILED IN BOOK 357, PAGES 25-34, INCLUSIVE, OF PARCEL MAPS, IN THE OFFICE OF THE COUNTY RECORDER, BEING NORTH 18°48'24" EAST WAS USED AS THE BASIS OF BEARINGS FOR THIS DESCRIPTION AND MAP.

### GRAPHIC SCALE



### DETAIL



### CITY OF ANAHEIM

### BOUNDARY LINE ADJUSTMENT

BETWEEN  
 CITY OF ANAHEIM AND CITY OF ORANGE  
 SCALE: 1" = 800'  
 DRAWN BY: J.P. CHECKED BY: A.D.F.  
 DATE: MAY 20, 2021

JOHNSON-FRANK & ASSOC., INC.  
 LAND SURVEYING - MAPPING  
 5150 E. HUNTER AVENUE  
 ANAHEIM, CALIFORNIA 92807-2049  
 (714) 777-8877 FAX (714) 777-1641