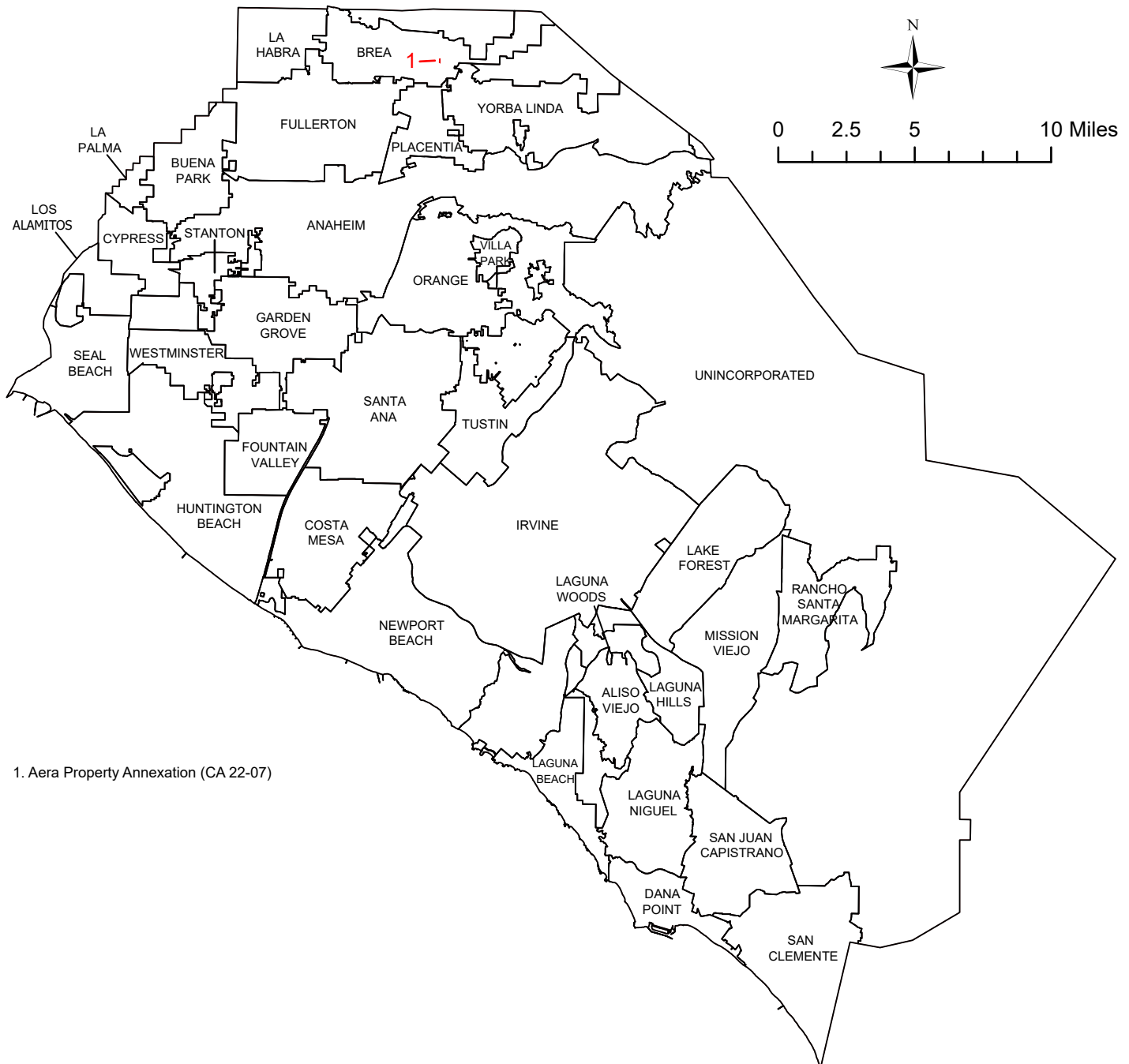
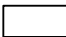



# Orange County Boundary and Annexation Report 2023-2024 (January 1)



1. Aera Property Annexation (CA 22-07)

	January 1, 2024 Jurisdictions
	January 1, 2023 Jurisdictions

Source: OC Geomatics, 2023 & 2024

Note: Coastal boundary represents mean high tide circa 2015. Coastal boundary approximated by CDR GIS staff.

# Orange County Boundary and Annexation Report 2023-2024

Jurisdiction	Total Area (Square Miles)*		Area Change 2023-2024**	Annexation Reference #
	January 1, 2023	January 1, 2024		
Aliso Viejo	6.921	6.921	0	1
Anaheim	51.222	51.222	0	
Brea	12.689	12.691	0.0023	
Buena Park	10.550	10.550	0	
Costa Mesa	15.849	15.849	0	
Cypress	6.622	6.622	0	
Dana Point	6.602	6.602	0	
Fountain Valley	9.065	9.065	0	
Fullerton	22.447	22.447	0	
Garden Grove	17.925	17.925	0	
Huntington Beach	27.612	27.612	0	
Irvine	65.969	65.969	0	
Laguna Beach	8.932	8.932	0	
Laguna Hills	6.647	6.647	0	
Laguna Niguel	14.787	14.787	0	
Laguna Woods	3.306	3.306	0	
La Habra	7.573	7.573	0	
Lake Forest	16.785	16.785	0	
La Palma	1.804	1.804	0	
Los Alamitos	4.091	4.091	0	
Mission Viejo	18.009	18.009	0	
Newport Beach	25.987	25.987	0	
Orange	25.431	25.431	0	
Placentia	6.740	6.740	0	
Rancho Santa Margarita	12.938	12.938	0	
San Clemente	18.357	18.357	0	
San Juan Capistrano	14.407	14.407	0	
Santa Ana	27.391	27.391	0	
Seal Beach	11.880	11.880	0	
Stanton	3.105	3.105	0	
Tustin	11.137	11.137	0	
Villa Park	2.078	2.078	0	
Westminster	10.070	10.070	0	
Yorba Linda	20.000	20.000	0	
Unincorporated	274.883	274.881	-0.0023	
Orange County	799.811	799.811	0	

## Detailed Annexation List:

- 1) Aera Property Annexation to the City of Brea (CA 22-07)  
Effective 06/15/2023  
From Unincorporated to Brea  
Uninhabited  
1.457 acres (0.0022765625 Sq. Miles)

### Notes:

Benchmark 2015.

Some jurisdictions' legal boundary extends three miles off the coast.

A fixed boundary line at the coast was created in November 2014 based on high-resolution county-wide aerial imagery that was captured on June 19, 2013, to approximate the ocean waterline and to eliminate artificial land area changes to jurisdictions adjacent to the Orange County coast. This coast line does not define any vertical datum such as mean high tide, mean sea level, or mean lower low tide. This reference line was developed through a collaboration of OC Public Works, OC LAFCO, and CDR; it has no legal value; and its purpose is for CDR's use in reporting population density and jurisdictional annexations. For official legal boundaries, contact the County of Orange Surveyor's office <http://ocpublicworks.com/survey/>

Source: O.C. Geomatics, 2023 & 2024

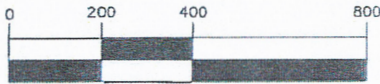
\*Area calculated in ArcGIS by CDR.

\*\*Annual area change totals may not match detailed annexation information due to rounding.

The preparation of this report has been financed in part through grant(s) from the Federal Highway Administration (FHWA) and Federal Transit Administration (FTA) through the U.S. Department of Transportation (DOT). The contents of this report reflect the views of the author who is responsible for the facts and accuracy of the data presented herein. The contents do not necessarily reflect the official views or policies of CDR Sponsors, Contributing Partners, or DOT. This report does not constitute a standard, specification or regulation.

# EXHIBIT "B"

'AERA PROPERTY ANNEXATION (CA 22-07)  
TO THE CITY OF BREA



GRAPHIC SCALE: 1"=400'

## LEGEND:

- PROPOSED ANNEXATION BOUNDARY
- - - - EXISTING CITY BOUNDARY
- CENTERLINE

( ) RECORD DATA PER ADJOINING ANNEXATIONS

XXX-XXX-XX ASSESSOR PARCEL NUMBER

P.O.B. POINT OF BEGINNING

⊙ CENTERLINE

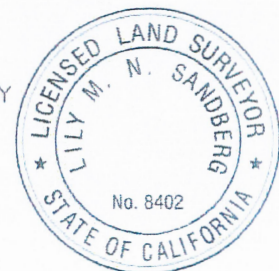


THIS MAP HAS BEEN PREPARED BY  
ME OR UNDER MY DIRECTION.

DATED THIS 31<sup>ST</sup> DAY OF  
JANUARY, 2023

THIS DESCRIPTION AND MAP OF  
PROPOSED ANNEXATION DOES MEET  
THE APPROVAL OF THE ORANGE COUNTY  
SURVEYOR'S OFFICE.

DATED THIS 31<sup>ST</sup> DAY OF  
JANUARY, 2023



KEVIN R. HILLS, COUNTY SURVEYOR

ROBERT L. WHEELER IV, LS 8639

BY: LILY M. N. SANDBERG, DEPUTY COUNTY SURVEYOR, L.S. 8402

**HUNSAKER & ASSOCIATES**  
IRVINE, INC.  
PLANNING ■ ENGINEERING ■ SURVEYING  
Three Hughes ■ Irvine, CA 92618 ■ PH: (949) 583-1010 ■ FX: (949) 583-0759

DATE: 11/09/2022	REV. DATE: 1/23/2023	DWG. By: C. TRIPI	CK'd By: R. WHEELER	SCALE: 1"= 400'	W.O. 4213-3X
FILE: I:\Aera Brea Central\ANNEXATIONS\LD\10311\SH01.dwg				H&A LEGAL No. 10311	SHEET 1 OF 2

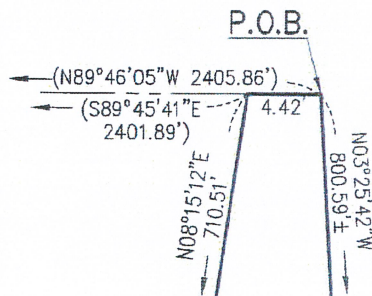


# EXHIBIT "B"

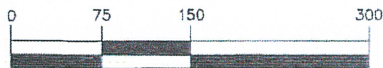
## "AERA PROPERTY ANNEXATION (CA 22-07)" TO THE CITY OF BREA

LINE TABLE		
LINE	BEARING	LENGTH
L1	N77°40'33"W	29.80'
L2	N12°19'30"E	23.17'
(L2)	(S12°20'04"W	23.87')
L3	N34°42'40"W	37.02'
(L3)	(S34°42'06"E	37.02')
L4	N77°40'33"W	103.77'

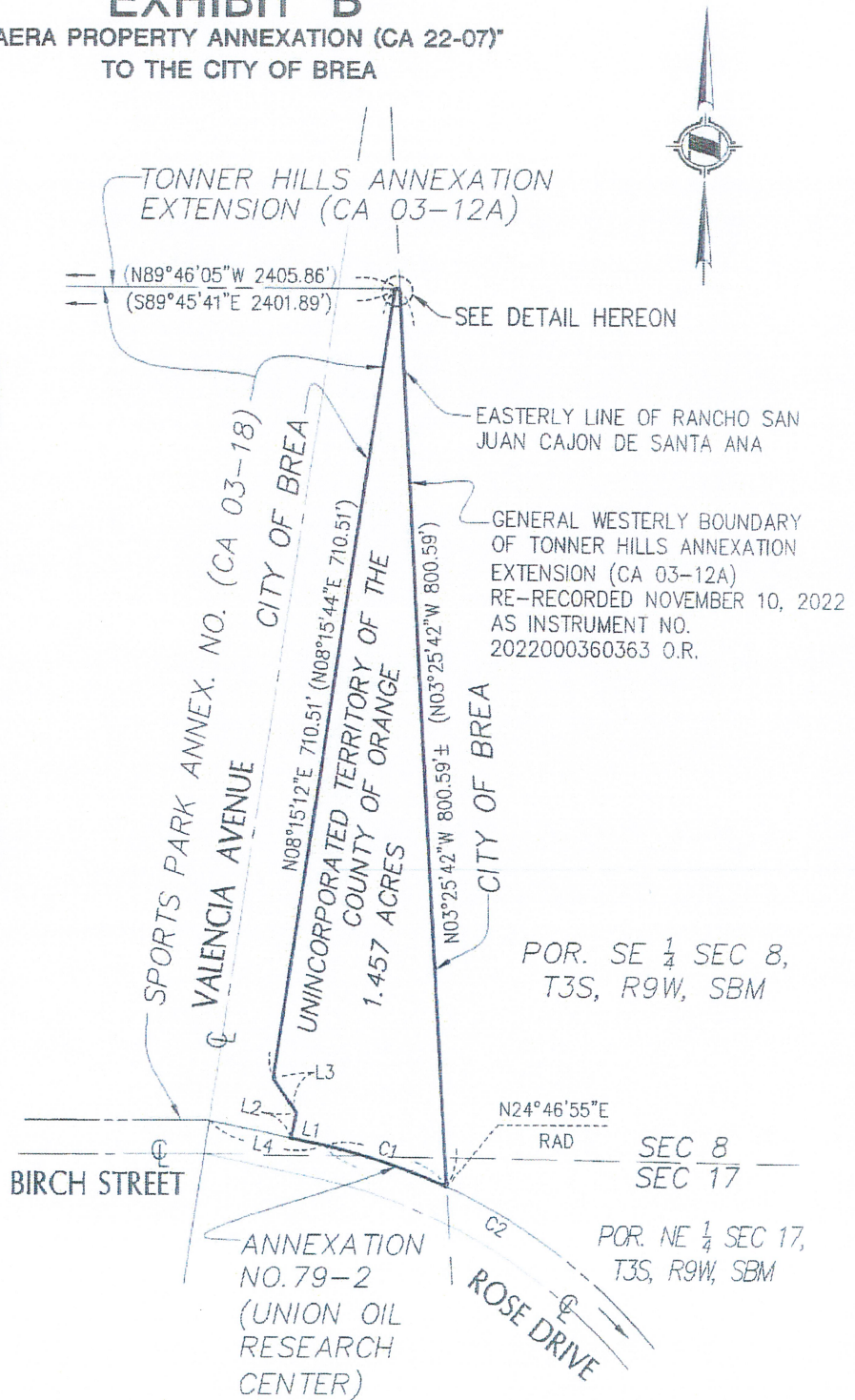
CURVE TABLE			
CURVE	DELTA	RADIUS	LENGTH
C1	12°27'29"	530.00'	115.24'
(C2)	(74°04'02"	530.00'	685.14')



**DETAIL**  
NOT TO SCALE



GRAPHIC SCALE: 1"=150'



SEE LEGEND SHEET 1



**HUNSAKER & ASSOCIATES**  
IRVINE, INC.  
PLANNING ■ ENGINEERING ■ SURVEYING  
Three Hughes • Irvine, CA 92618 • PH: (949) 583-1010 • FX: (949) 583-0759

DATE: 11/09/2022 REV. DATE: 1/24/2023 DWG. By: C. TRIPI

CK'd By: R. WHEELER

SCALE: 1"= 150'

W.O. 4213-3X

FILE: I:\Aera Brea Central\ANNEXATIONS\LD\10311\SHT02.dwg

H&A LEGAL No. 10311

SHEET 2 OF 2