



ORANGE COUNTY MOVERS: 1995 - 2000

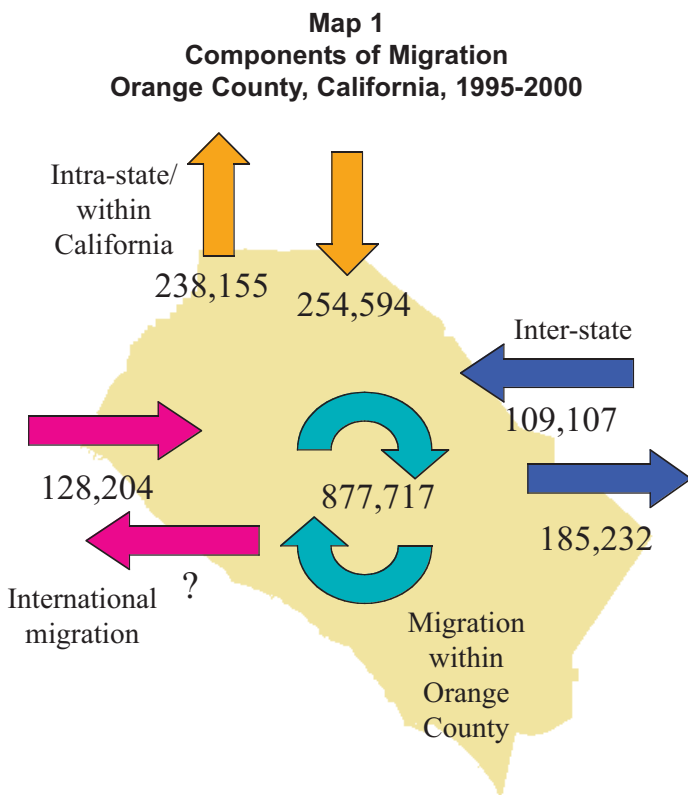
INTRODUCTION

Three events change population size and composition in a particular area: births, deaths and migration, i.e. people moving from one location to another. Without these factors, the population in an area would not change. Of course it is a rare case where none of the events occur. For several years, most of Orange County's population growth has been the result of natural increase, which is the difference between births and deaths. However, this belies the fact that there is a considerable level of migration occurring in Orange County. In 2000, there were 2,632,408 persons 5 years of age and over. This segment of the population grew by 68,518 persons from 1995 to the time of the 2000 Census. Of those 5 years of age or older, 52%, 1,369,622 persons, reported they lived at a different address in 2000 than in 1995.

To help explain the fact that the net effect of migration on population growth was considerably less than the total extent of migration, we need to define the different types of migration. For this purpose, Map 1 has been developed to help with this explanation. There are two major types of migration: domestic migration and foreign migration. Domestic migration is the movement of residents of the nation within the nation. Foreign migration is the movement of persons from a foreign country to this country and persons from this country to a foreign country (Pink Arrows). Between 1995 and 2000, the 2000 Census revealed there were 128,204 persons who moved to Orange County that came from a foreign country. It should be noted that citizenship is not a defining factor in foreign migration, nor, for that matter, is domestic migration. Citizens of this country do move to and from homes in a foreign country.

There are three forms of domestic migration at the geographic level of a county. The first is intra-

county migration, which is represented by persons who move from one location in the county to another (Green Arrows). This movement may be within a city/community or between two cities/communities. It does not have an effect on the size of the population within the county, but may affect the population of the cities when two cities are involved. During 1995 to 2000, a total of 877,717 persons changed locations within Orange County. The second form of domestic migration is intra-state migration (Orange Arrows). This is the movement of people from one county to another county within the state. Between 1995 and 2000, there were 254,594 persons who moved from



Source: 2000 U.S. Census Migration DVD

another California county into Orange County, while 238,155 persons moved from Orange County to another county within California. There was a net increase of 16,439 persons during this period due to intra-state migration. The third form of domestic migration is inter-state migration (Blue Arrows). This is people moving from one state to another. During the period of 1995 to 2000, a total of 109,107 people moved from other states into Orange County, while 185,232 persons left Orange County for another state. There was actually a loss of 76,125 persons due to inter-state migration.

Table 1 organizes these same numbers in a different way. About 8% of Orange County's 2000 Census population was born between 1995 and 2000. The balance of the population, 2,632,408 persons aged 5 and older, were asked the question during the 2000 Census if they lived at the same address in 1995. Data derived from this census question does not include all moves in the interim years between 1995 and 2000, only the person's locations in 1995 and 2000. Forty-four percent (44.4%) of the 2000 Orange County population answered they lived in the same house five years earlier. The remaining 48% of the population moved within or into Orange County. One-in-three persons (30.8%) lived in Orange County in 1995, but lived at a different Orange County location in 2000. Half a million people (491,905) moved into Orange County between 1995 and 2000. This group accounts for 17.3% of Orange County's 2000 population. About 9% of county residents moved from another California county and only 3.8% moved in from another state. Almost five percent (4.5%) of the population

moved into Orange County from another country.

The raw numbers tell us about the gross migration patterns and their effects on the overall population numbers. However, these do not tell us much about the effects these numbers have on the characteristics of Orange County. We will look at several of the characteristics of the population that moved into Orange County from another county or state and the population that moved out of Orange County to another county or state in the following pages. Thus, the focus will be on domestic migration. The dataset that was used for this profile contained data for all of the United States who moved from one county to another. All records were identified that summarized the number of persons who moved out of Orange County between 1995 and 2000 (423,387) and those that moved into Orange County between 1995 and 2000 (363,701) from another state or county within California. Because the Census only surveys people residing in the U.S. at the time of the census, in other U.S. territories and military personnel overseas, there is no way to find through the U.S. Census how many persons permanently moved to another country.

INTRA-STATE MIGRATION

Overall, most of the migration to and from Orange County is with its neighboring counties of Los Angeles, Riverside, San Bernardino, and San Diego. Of the total intra-state migration of 492,749 during this period, 223,804 was to and from Los Angeles, 85,396 was to and from Riverside, 46,450 was to and from San Diego, and 40,710 was to and from San Bernardino for a total of 396,360. The remainder was generally distributed proportionately based on the size of the county and proximity to Orange County.

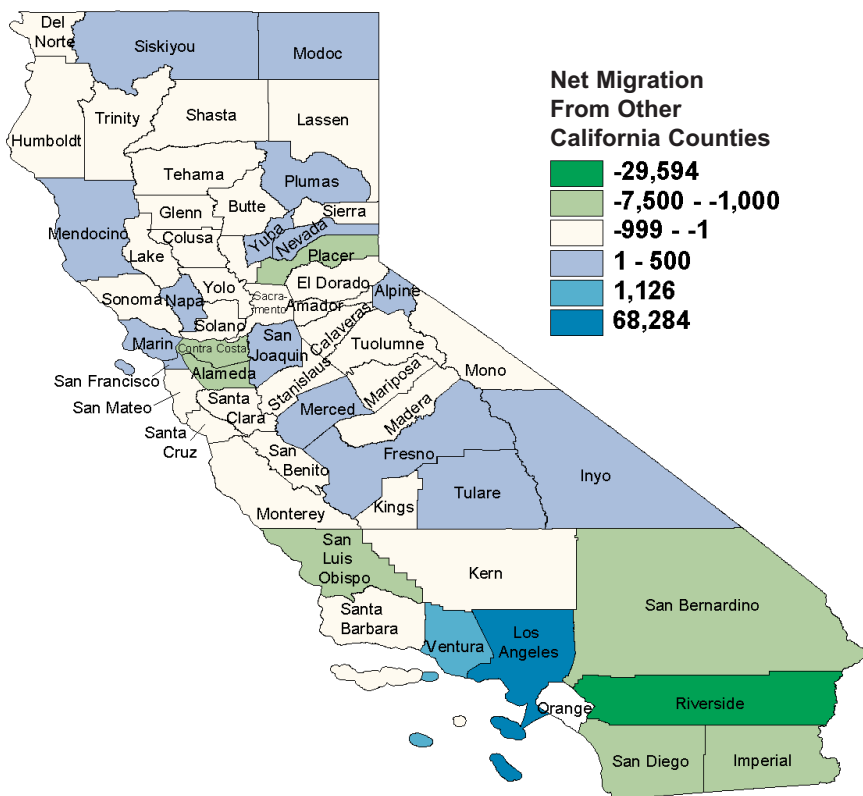
Orange County gained population from seventeen counties (Map 2). Of the population gains, almost all was accounted for by Los Angeles County. In fact, the net increase of 68,284 persons from Los Angeles County overshadowed any net in- or out-migration between the other 56 counties. Orange County lost population to forty counties. Most of the out-migration, to other than Los Angeles, was to Riverside County with a net out-migration of

Table 1
Components of Migration, Orange County, California
1995-2000

Orange County Total Population	2,846,289
Population 5 years and over	2,632,408
Lived in same house in 1995	1,262,786
Moved between 1995 -2000 & now live in OC	1,369,622
<i>Moved within Orange County</i>	877,717
<i>Moved into Orange County</i>	491,905
Domestic Migration Total	363,701
In-Migrants from CA Counties	254,594
In-Migrants from Other State	109,107
Foreign Migration Total	128,204
In-Migrants from another Country	128,204
Moved out of Orange County 1995 -2000	423,387
Moved to a California County	238,155
Moved to another State	185,232

Source: 2000 U.S. Census Migration DVD.

Map 2
Orange County Net Migration
To and From Other California Counties, 1995-2000



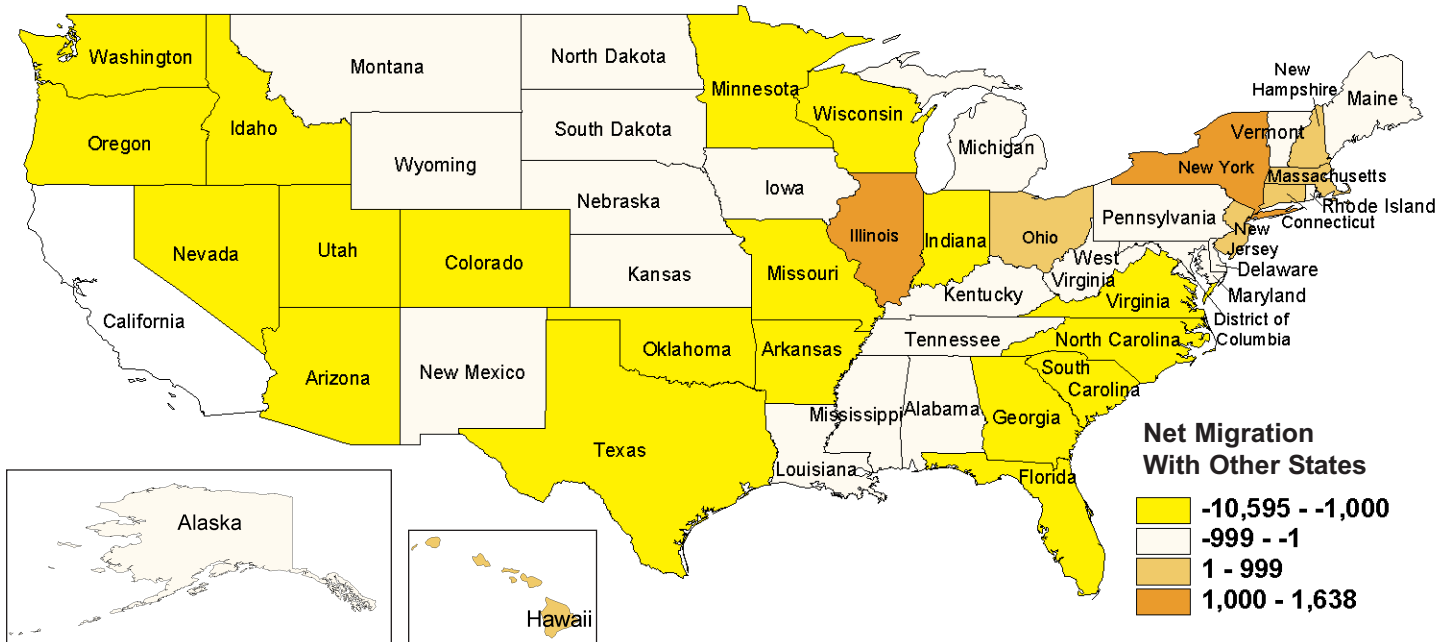
Source: 2000 U.S. Census Migration DVD

29,594 persons, followed by San Diego County at 7,476. There were unexpected findings in that the level of net out-migration with Alameda and Imperial Counties, each at approximately 2,500 persons, was higher than that of San Bernardino County at approximately 2,000 persons.

INTER-STATE MIGRATION

Nine states accounted for about half of the migration to and from Orange County. In descending order these were Texas, Arizona, Nevada, Washington, Colorado, Illinois, Florida, Oregon, and New York. Orange County lost population to forty (40) states. Of these, five states (Nevada, Arizona, Texas, Washington, and Colorado) accounted for nearly 40,000 of the total net out-migration from Orange County to other states. The levels were between 3,000 - 4,500 in five other states: North Carolina, Georgia, Oregon, Virginia, and Florida. Orange County gained population from eight states and the District of Columbia. The gains were not exceptionally large, with the sum being under 5,000. All others, with the exception of Hawaii, Illinois and Ohio, were concentrated in the Northeast.

Map 3
Orange County, California Net Migration To and From Other U.S. States, 1995-2000



Source: 2000 U.S. Census Migration DVD

AGE

Table 2 displays the age structure of domestic migrants. We find here that there was a net loss, or out-migration, of 59,686 persons. The largest migratory age cohorts were between 20 and 39. These are the typical age groups of college students and those with new careers and families. This age group also contains the largest number of unmarried persons who are more mobile than married persons. With the rise in housing costs in Orange County, having residents move out of Orange County to purchase a home is occurring more often and the trend of moving to inland counties was mentioned previously.

Figure 1 displays the age cohort distribution more clearly. When looking at the individual age cohorts, there was a loss of population between the ages of 5 and 69. There was a net in-migration of persons aged 70 and above. There are a couple of possible explanations for this event. One is that there are two large senior communities in Orange County. The first is the City of Laguna Woods, which almost entirely consists of a residential senior community. The second is Leisure World, a senior community in Seal Beach. In addition, there has been a trend over time in which data show that multiple generations are living within a single household. With the rising cost of housing and people living longer, people over the age of 70 are likely to move in with family or others to be cared for, to help take care of grandchildren or to defray costs.

RACE/ETHNICITY

Table 3 shows the domestic population by race and ethnicity. The only group to have a net in-migration of domestic population was non-Hispanic Asians. About 12,000 more non-Hispanic Asians moved into Orange County than out. The other four racial/ethnic categories showed a net out-migration: non-Hispanic whites, non-Hispanic blacks, Hispanics and Latinos and those of two or more races/all others.

NATIVITY

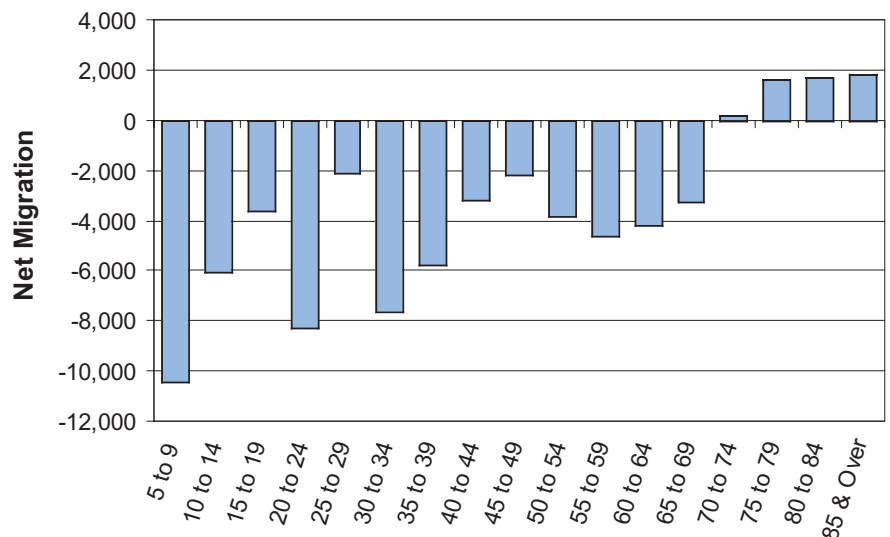
Three out of four persons who moved into Orange County between 1995 and 2000 were born in the United States (Table 4). The same percent of native-born residents moved out of Orange County during that same time, but the number of persons who moved out was greater than those that moved in by 43,138 persons. There was also a net out-migration of foreign-born residents

Table 2
Age Distribution of Domestic Migrants
Orange County, California
1995-2000

Age Cohort	Moving into OC	Moving out of OC	Net Domestic Migration
5 to 9	28,137	38,528	-10,391
10 to 14	21,660	27,673	-6,013
15 to 19	22,152	25,766	-3,614
20 to 24	36,435	44,707	-8,272
25 to 29	50,242	52,344	-2,102
30 to 34	45,554	53,207	-7,653
35 to 39	40,622	46,371	-5,749
40 to 44	31,134	34,338	-3,204
45 to 49	21,662	23,811	-2,149
50 to 54	16,288	20,125	-3,837
55 to 59	11,708	16,304	-4,596
60 to 64	8,570	12,760	-4,190
65 to 69	6,802	10,073	-3,271
70 to 74	6,354	6,158	196
75 to 79	6,322	4,712	1,610
80 to 84	4,860	3,139	1,721
85 & Over	5,199	3,371	1,828
Total	363,701	423,387	-59,686

Source: 2000 U.S. Census Migration DVD.

Figure 1
Net Domestic Migration by Age Cohort for Persons Aged 5 Years and Over, Orange County, 1995-2000



Orange County's Migration Population by Age Cohort

Source: 2000 U.S. Census Migration DVD

Table 3
Components of Migration for Racial and Ethnic Distribution of Orange County's Domestic Migrant Population, 1995-2000

Race/Ethnicity	Moving into OC	Moving out of OC	Net Domestic Migration
Non-Hispanic White	221,824	244,543	-22,719
Non-Hispanic Black	9,429	16,182	-6,753
Non-Hispanic Asian	52,646	40,579	12,067
Non-Hispanic Other	13,331	15,519	-2,188
Hispanic or Latino	66,007	102,314	-36,307
Total	363,237	419,137	-55,900

Source: 2000 U.S. Census Migration DVD.

during the 20 years prior to the census, between 1980 and 1999. There were a slightly larger number (1,352) of foreign-born persons who entered the U.S. prior to 1980 that moved into the county than moved out. As was discussed in the last issue of *Profiles*, as the length of time immigrants stay in the U.S., their educational level increases, as does their income. It is likely that those foreign-born residents who have been in the U.S. for over 20 years have higher educational levels and occupations that have higher income which may afford them the ability to move into Orange County.

HOUSEHOLD TYPE

Looking at the type of households that were moving into and out of Orange County, we find that there was a net in-migration of only unmarried family households without children under 18 (Table 5). These accounted for only 5.3% of all migratory households moving into and out of Orange County. The majority of households that moved out of the county by number and percent were Married-couple families with children under 18, accounting for 40.1% (303,270) of all migratory households for a net loss of 35,670.

EDUCATION & INCOME

It is well documented that income and education have a "positive"

relationship. That is, as education increases, income increases. The same relationship is shown by the migratory population in Orange County. Those persons 25 years or older with less than a Bachelor's Degree showed a net out-migration (45,690). Those persons with a Bachelor's, graduate or other professional degree showed a net in-migration to Orange County (14,294). It is not surprising that the number of households earning more than \$75,000 accounted for a net in-migration to Orange County (Table 7). These accounted for 25,000 households moving into the county. There was a net out-migration of 76,400 households earning less than \$75,000. Again, with the on-going rise of housing prices in Orange County, it is likely that this trend will continue. Chapman University's A. Gary Anderson Center for Economic Research estimated that in 2004, housing affordability reached an all-time low in Orange County. The center's December report showed housing affordability, the ratio of home prices to median family income, has peaked when looking at the last 15 years. In February, the California Association of Realtors reported only 11% of Orange County households could afford a median priced home.

Table 4
Components of Migration for Orange County's Domestic Migrant Population by Nativity and Year of Immigration, 1995-2000

Nativity and Year of Immigration	Moving into OC		Moving out of OC		Net Domestic Migration
	Number	Percent	Number	Percent	
Native Born	284,635	78.3%	327,773	77.4%	-43,138
Foreign Born 1990 - 2000	23,325	6.4%	33,373	7.9%	-10,048
Foreign Born 1980 -1989	30,776	8.5%	38,628	9.1%	-7,852
Foreign Born 1970 -1979	16,268	4.5%	15,532	3.7%	736
Foreign Born before 1970	8,697	2.4%	8,081	1.9%	616
Total	363,701	100%	423,387	100%	-59,686

Source: 2000 U.S. Census Migration DVD.

Table 5
Components of Migration for Orange County's Domestic Migrant Population by Household Type, 1995-2000

Household Type	Moving into OC	Moving out of OC	Net Domestic Migration
Married-couple family with children under 18	133,800	169,470	-35,670
Married-couple family without children under 18	72,420	79,830	-7,410
Other family households with children under 18	40,310	49,460	-9,150
Other family households without children under 18	21,050	18,980	2,070
Non-family households	84,470	86,370	-1,900
Total	352,050	404,110	-52,060

Source: 2000 U.S. Census Migration DVD.

Table 6
Components of Migration for Orange County's Domestic Migrant Population by Education Level, 1995-2000

Educational Level	Moving into OC	Moving out of OC	Net Domestic Migration
Less than 9 th	10,834	19,639	-8,805
9th - 12th no diploma	17,152	26,523	-9,371
High School	39,886	54,476	-14,590
Some college	61,413	73,545	-12,132
Associate degree	20,550	21,342	-792
Bachelor's degree	71,406	61,179	10,227
Graduate or Professional degree	34,076	30,009	4,067
Total	255,317	286,713	-31,396

Source: 2000 U.S. Census Migration DVD.

Table 7
Components of Migration for Orange County's Domestic Migrant Population by Income Level 1995-2000

Income Level	Moving into OC	Moving out of OC	Net Domestic Migration
Under \$25,000	47,800	80,360	-32,560
\$25,000 to \$49,999	76,150	111,120	-34,970
\$50,000 to \$74,999	73,990	82,860	-8,870
\$75,000 to \$99,999	54,160	53,740	420
\$100,000 to \$199,999	79,920	60,970	18,950
\$200,000 or more	20,250	14,620	5,630

Source: 2000 U.S. Census Migration DVD.

OCCUPATION

There was a net out-migration of persons reporting their occupation for a net loss of 7,735 persons (Table 8). Persons with occupations that showed a net out-migration were in the following categories: Protective & Other Service; Construction, Extraction; Installation, Maintenance, and Repair; Production; Transportation and Material Moving; and

Farming, Fishing, and Forestry. There was a net immigration of persons with occupations in Management, Business and Financial; Professional and Related; Sales and Related; and Office and Administrative Support. The first two of these occupational categories are known to have higher average incomes and this parallels the previous findings that persons with higher income and education were moving into Orange County and persons with lower income and education were moving out.

DATA SET

The data reported utilized in this Profiles comes from the 2000 U.S. Census Migration DVD. This data set contains mobility/migration data for various levels of geography along with a county-to-county migration flow data for counties and equivalent entities and some minor civil divisions (MCDs) by selected characteristics. For more information, please visit: http://www.census.gov/population/www/cen2000/mig_dvd.html

Table 8
Components of Migration for Orange County's Domestic Migrant Population by Occupation, 1995-2000

Occupation	Moving into OC	Moving out of OC	Net Domestic Migration
Sales and Related	30,246	28,081	2,165
Office and Administrative Support	32,885	32,578	307
Management, Business and Financial	44,454	37,825	6,629
Professional and Related	52,404	46,034	6,370
Protective service	3,536	3,672	-136
Other service	17,549	25,538	-7,989
Farming, Fishing, and Forestry	214	895	-681
Construction and Extraction	5,667	10,258	-4,591
Installation, maintenance, and repair	5,355	7,212	-1,857
Production	9,051	13,651	-4,600
Transportation and Material Moving	6,363	9,715	-3,352
Total	207,724	215,459	-7,735

Source: 2000 U.S. Census Migration DVD.

PROFILES IS PRODUCED BY THE CENTER FOR DEMOGRAPHIC RESEARCH, CALIFORNIA STATE UNIVERSITY, FULLERTON.

PROFILES IS A QUARTERLY PUBLICATION THAT FOCUSES ON DEMOGRAPHIC ISSUES IN ORANGE COUNTY.

THIS ISSUE WAS AUTHORED BY WILLIAM GAYK, PHD AND DEBORAH STICKLEY DIEP.

WE WELCOME COMMENTS & SUGGESTIONS AND CAN BE REACHED AT (714)278-3009. [HTTP://WWW.FULLERTON.EDU/CDR](http://www.fullerton.edu/cdr)

