



## Census 2000: Orange County's Youth Population

### INTRODUCTION

The data in this issue of Orange County Profiles comes from Summary File 1, 2000 U.S. Census and comparison data from the 1990 Census, Summary Tape File 1. This issue examines the youth population of Orange County ages 0-17.

### AGE AND GENDER

Approximately 27% of Orange County's Census 2000 population is between the ages of 0 and 17, in comparison to 24.4% of the total population in 1990. This age group has grown 30.4% since the 1990 Census. Orange County's youth population is growing at a more rapid rate than California's or the United States' youth populations. The United States' youth population has grown 13.7% since 1990, while California's 0-17 population has grown 19.3% (Table 1). Of the four youth age cohorts, the greatest percent increase for Orange County was in the 5-9 age group (41.5%), those born between 1991 and 1995. The second largest increase for Orange County, 39.1%, was in

the 10-14 age group, those born between 1986 and 1990. The population ages 0-4 in Orange County increased by only 16.8%. This is a result of declining fertility rates, in spite of the fact that the number of women of childbearing age (ages 15-44) has actually increased over the past decade. For the United States, the largest percent increase was the 15-17 cohort, those born between 1983 and 1985 (20.0%). California's largest percent increase was in the 10-14 cohort at 30.0%. By age cohort comparison, only the California 15-17 cohort's growth outpaced Orange County's, with California's cohort growing 27.3% compared to Orange County's 24.1%.

The gender ratios in Orange County have stayed about the same since 1990 (Table 2), with each age cohort averaging about 51% male and the 15-17 age cohort slightly higher at about 52% male.

Comparing the United States, California and Orange County from 1990 to 2000, the gender ratio of the youth

**Table 1**  
**Youth Population by Age Cohort for United States, California and Orange County, California 1990 and 2000**

Age Cohort	United States			California			Orange County, California		
	1990	2000	% Change	1990	2000	% Change	1990	2000	% Change
0 to 4 years	18,354,443	19,175,798	4.5%	2,397,715	2,486,981	3.7%	184,873	216,014	16.8%
5 to 9 years	18,099,179	20,549,505	13.5%	2,223,982	2,725,880	22.6%	163,897	231,928	41.5%
10 to 14 years	17,114,249	20,528,072	19.9%	1,977,343	2,570,822	30.0%	146,750	204,119	39.1%
15 to 17 years	10,036,561	12,040,437	20.0%	1,151,685	1,466,146	27.3%	93,783	116,358	24.1%
<b>Total Ages 0-17</b>	<b>63,604,432</b>	<b>72,293,812</b>	<b>13.7%</b>	<b>7,750,725</b>	<b>9,249,829</b>	<b>19.3%</b>	<b>589,303</b>	<b>768,419</b>	<b>30.4%</b>
<b>Total Population</b>	<b>248,709,873</b>	<b>281,421,906</b>		<b>29,760,021</b>	<b>33,871,648</b>		<b>2,410,668</b>	<b>2,846,289</b>	
% Youth of Total Pop	25.6%	25.7%		26.0%	27.3%		24.4%	27.0%	

SOURCE: Summary File 1, U.S. Census 1990, 2000.

**Table 2**  
**Youth Population by Age Cohort for Orange County, California, 1990 and 2000**

Age Cohort	1990				2000				1990 Orange County	2000 Orange County	% Change 1990 - 2000
	Male		Female		Male		Female				
	#	%	#	%	#	%	#	%			
0 to 4 years	94,641	51.2%	90,232	48.8%	110,404	51.1%	105,610	48.9%	184,873	216,014	16.8%
5 to 9 years	83,909	51.2%	79,988	48.8%	119,084	51.3%	112,844	48.7%	163,897	231,928	41.5%
10 to 14 years	75,323	51.3%	71,427	48.7%	104,570	51.2%	99,549	48.8%	146,750	204,119	39.1%
15 to 17 years	48,959	52.2%	44,824	47.8%	60,484	52.0%	55,874	48.0%	93,783	116,358	24.1%
<b>Total Ages 0-17</b>	<b>302,832</b>	<b>51.4%</b>	<b>286,471</b>	<b>48.6%</b>	<b>394,542</b>	<b>51.3%</b>	<b>373,877</b>	<b>48.7%</b>	<b>589,303</b>	<b>768,419</b>	<b>30.4%</b>

SOURCE: Summary File 1, U.S. Census 1990, 2000.

population has stayed about the same, with each having approximately 48.7% female and 51.3% male (Chart 1).

RACE AND ETHNICITY

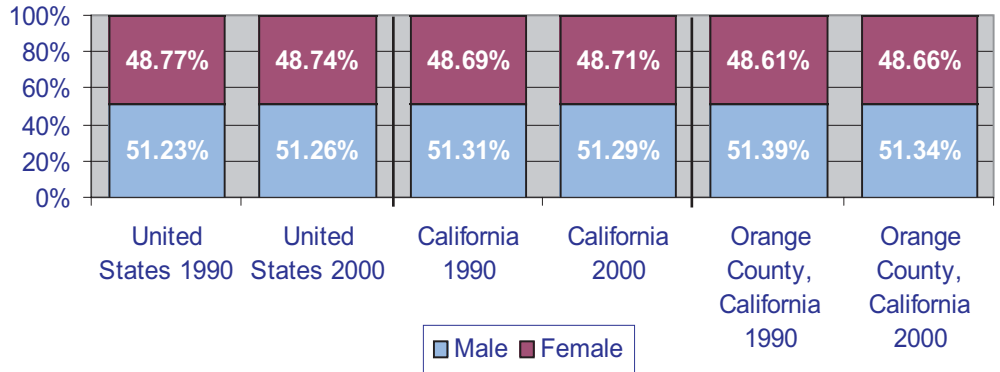
The Orange County youth population's racial and ethnic distribution resembles the overall county distribution. The largest racial youth group is the White Alone category with 58.1% of all youths being White Alone. Some Other Race Alone is the second largest at 20.5%, followed by Asian Alone at 12.0% (Chart 2). These are followed in order by Two or More Races (6.4%), Black or African American (1.8%), American Indian and Native Alaskan (0.8%), and Native Hawaiian or Pacific Islander (0.4%). Over 42% of all youths are Hispanic or Latino of any race (Chart 3).

When looking at the youth population within each racial and ethnic group, there is a large difference seen in proportion of youths to overall group population (Chart 4). The White Alone population (446,428) and the Some Other Race (157,335) groups are numerical majorities while the largest percent of youth population (by percentage of respective racial or ethnic group) is in the Two or More Races group. The Two or More Races group has 42.1% of its population ages between the ages of 0 and 17. This is followed by Some Other Race Alone (37.4%) and Hispanic or Latino of any race (37.2%). The smallest percentage of youth populations are in the Asian Alone and White Alone categories at 23.8% and 24.2% respectively. Factors such as lower birth rates historically for Whites and Asians in Orange County and the large, retired-age population (approximately 65 years and older) for Whites Alone contribute to the smaller representation of youths.

LIVING ARRANGEMENTS

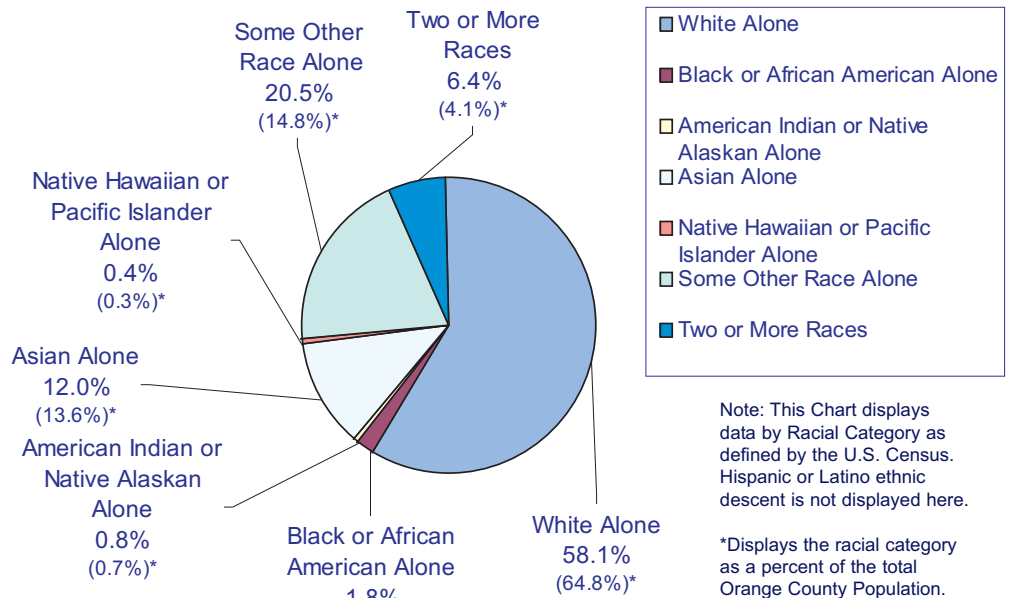
The vast majority of youths live in households. Less than two percent of each racial or ethnic group live in group quarters. (Group Quarters are defined by the Census as those not living in households; the two subcategories are 1) institutionalized population: correctional institutions, nursing homes, and juvenile institutions; and 2) noninstitutionalized population: group quarters other than institutions, such as college dormitories, military quarters, and group homes.) As seen in Table 3, the highest percent living in

Chart 1  
Population Ages 0-17 by Gender, 1990 and 2000



SOURCE: Summary File 1, U.S. Census 2000.

Chart 2  
Orange County Population Ages 0-17 by Race Category

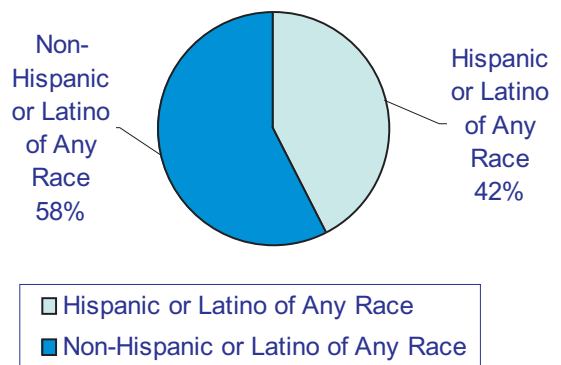


Note: This Chart displays data by Racial Category as defined by the U.S. Census. Hispanic or Latino ethnic descent is not displayed here.

\*Displays the racial category as a percent of the total Orange County Population.

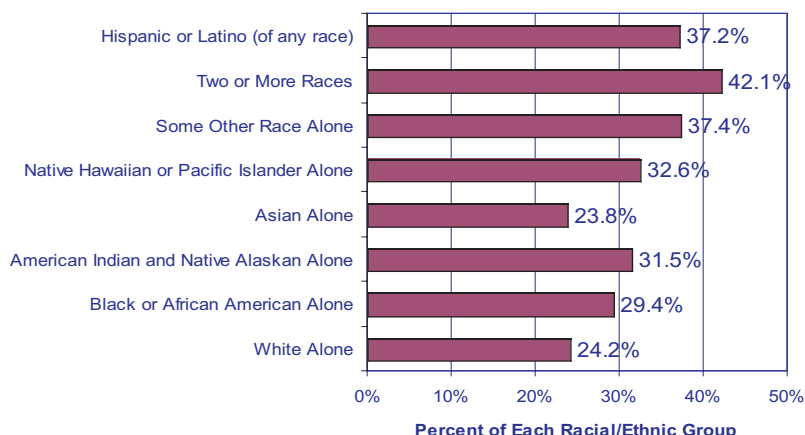
SOURCE: Summary File 1, U.S. Census 2000.

Chart 3  
Orange County Population Ages 0-17 by Hispanic or Latino of Any Race



SOURCE: Summary File 1, U.S. Census 2000.

**Chart 4**  
**Percent of Population Ages 0-17 Within Each Racial/Ethnic Group**



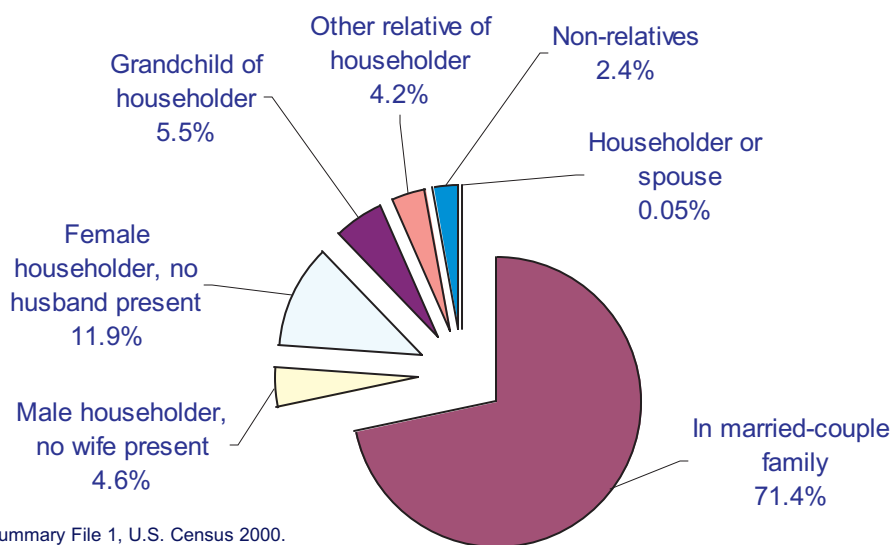
SOURCE: Summary File 1, U.S. Census 2000.

**Table 3**  
**Percent of Orange County Youth Ages 0-17 by Household Type and Race/Ethnicity, 2000**

	Households	Group Quarters
White Alone	99.5%	0.5%
Black or African American Alone	98.4%	1.6%
American Indian and Native Alaskan Alone	99.6%	0.4%
Asian Alone	99.8%	0.2%
Native Hawaiian or Pacific Islander Alone	99.2%	0.8%
Some Other Race Alone	99.7%	0.3%
Two or More Races	99.7%	0.3%

SOURCE: Summary File 1, U.S. Census 2000.

**Chart 5**  
**Percent of Orange County Population Ages 0-17 Living in Households by Relation to Householder, 2000**



SOURCE: Summary File 1, U.S. Census 2000.

group quarters are Blacks or African Americans at 1.6%. The lowest percentage is the Asian Alone group at 0.2%. The total number of youths living in group quarters has gone down from 0.56% in 1990 to 0.42% in 2000.

Of the total youth population living in households, the majority (71.4%) live in married-couple family households (Chart 5). This is down slightly from 1990's 72.8%. Almost 12% live in households with a female householder- no husband present. In contrast, only 4.6% of youths live with a male householder- no wife present. These two categories are up from 1990 at 11.4% to 11.8% and 3.9% to 4.6%, respectively. In 2000, 5.5% are grandchildren of the householder; 4.2% are some other type of relative of the householder (e.g. could be a cousin, niece, nephew) and 2.4% are non-relatives of the householder. In 2000, the category of "Some other type of relative" was divided and the category of grandchild of the householder was added. In 1990, these two categories accounted for 8.2% of the youth population. In 2000, these two categories account for 9.7%, a trend that is growing over time. Only .05% is the householder or the spouse of the householder.

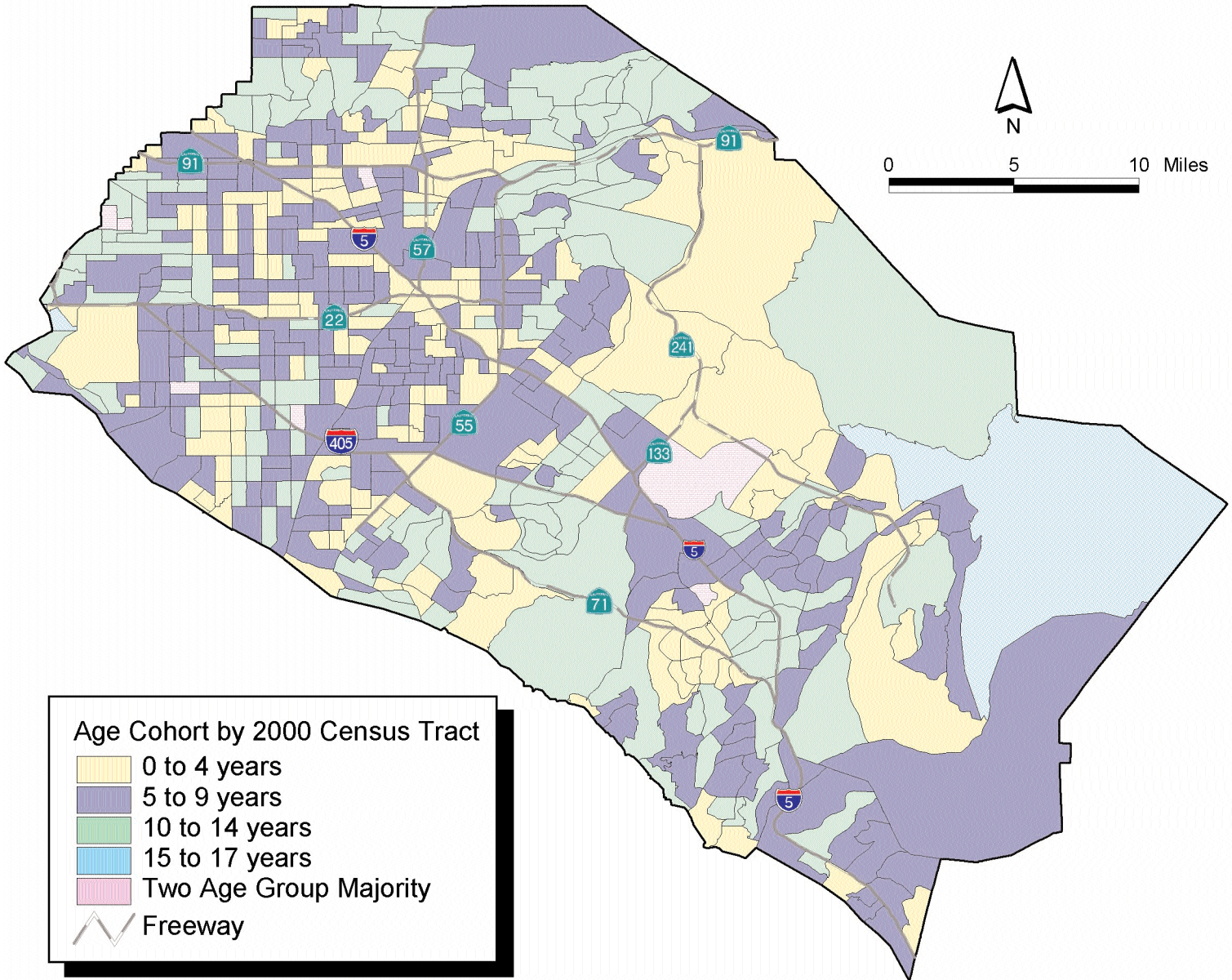
For a glossary of Census definitions visit: [http://factfinder.census.gov/home/en/epss/glossary\\_h.html](http://factfinder.census.gov/home/en/epss/glossary_h.html)

**GEOGRAPHY**

The map on page 4 shows the Orange County youth population by 2000 census tract. Each census tract displays the youth age cohort with the numerical majority. The 15-17 age cohort (including only 3 years instead of 5 years like the other three cohorts and thus being less likely to have a numerical or percentage majority) is the majority cohort in two census tracts. These two census tracts are on opposite sides of the County. Seven census tracts have no single majority, but two groups with the same number and percentage of the whole tract. These are found throughout the County. The 5 to 9 year olds are the majority cohort in 45% of the census tracts in the County (257 tracts). Youth ages 0 to 4 are the second majority cohort with 28%, or 162 census tracts. The 10-14 year olds are third with 26% (149 tracts).



# Majority Age Cohort Distribution of Youths Ages 0-17 Orange County, 2000



See descriptive text Page 3.  
Source: U.S. Census 2000, Summary File 1.

PROFILES IS PRODUCED BY THE CENTER FOR DEMOGRAPHIC RESEARCH, CALIFORNIA STATE UNIVERSITY, FULLERTON.  
PROFILES IS A QUARTERLY PUBLICATION THAT FOCUSES ON DEMOGRAPHIC ISSUES IN ORANGE COUNTY.

THIS ISSUE WAS AUTHORED BY DEBORAH STICKLEY DIEP.

WE WELCOME COMMENTS & SUGGESTIONS AND CAN BE REACHED AT (714)278-3009. [HTTP://WWW.FULLERTON.EDU/CDR](http://www.fullerton.edu/cdr)

