



Census 2000: Summary File 2

INTRODUCTION

This edition of Profiles details the information from the 2000 Census Summary File 2. The data is shown for Orange County and includes age, sex, race, Hispanic or Latino origin, household relationship, and whether the residence is owned or rented. The smallest geographic area for Summary File 2 is the census tract and there is a population-size threshold for race, ethnic or tribal group information (U.S. Census Bureau).

FAMILIES

Orange County's total population as of the April 1, 2000 Census was 2,846,289. There were 667,917 families in Orange County at the time of the census and 2,327,361 people lived in these families. Orange County had 81.8% of its population living in families compared to 80.2% of California's total population and 80.1% of the United States' population. The average family size in Orange County was 3.48 persons. For California it was 3.43, and for the U.S. it was 3.14.

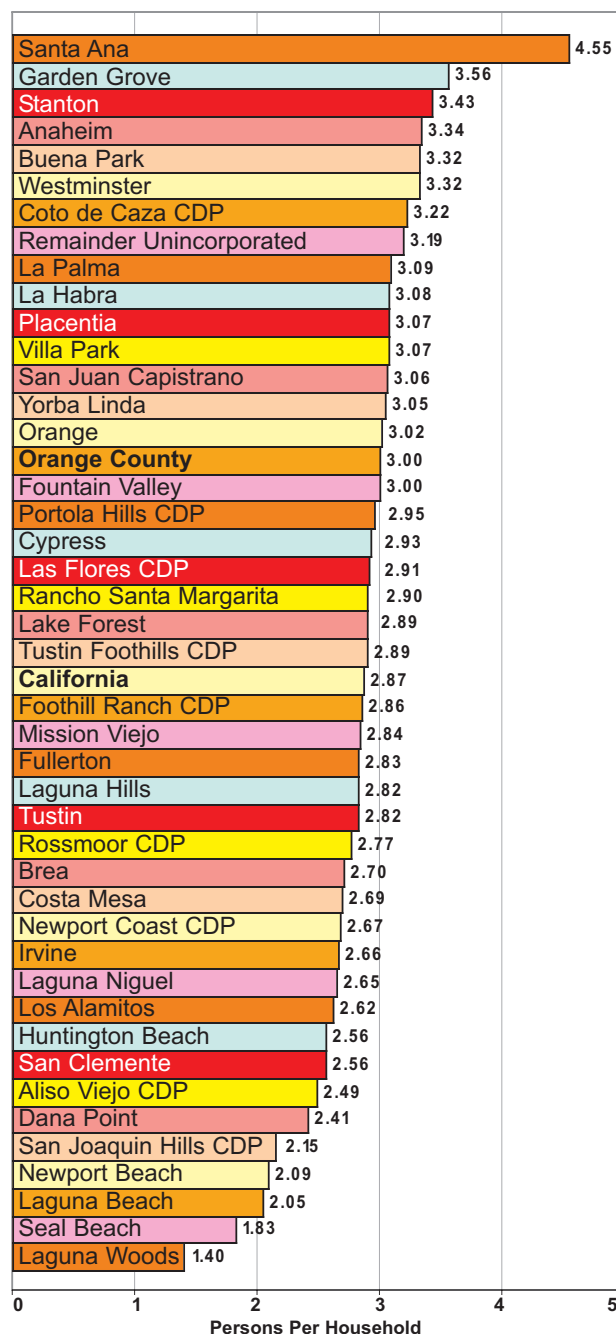
HOUSEHOLDS

The average number of persons per household in Orange County was 3.0. Fourteen cities or Census Designated Places had higher averages than the County and an additional seven were higher than California's average of 2.87 persons per household. Chart 1 displays this data for a visual comparison of the county. The two cities with the highest persons per household were Santa Ana (4.55) and Garden Grove (3.56). The two lowest were Laguna Woods (1.40) and Seal Beach (1.83).

Unmarried-partner households headed 5.0% of the total households in Orange County. All other households were of married partners or single persons without a partner. Orange County's unmarried partner households were lower than California's 5.9%. Of these, the most common event was the unmarried male and female partners, totaling 4.4% of all households. Male householders with female partners (2.5%) were more common than female householders and male partners (1.9%) (Table 1).

Table 2, page 3, displays the information in Chart 1 along with the breakout of the persons per unit for owner-occupied and renter-occupied units. The highlighted cells show areas where there is a higher persons per unit occurrence.

Chart 1
Persons Per Dwelling Unit by Census Place
Orange County, 2000*



*Note: Chart 1 colors are for presentation only.

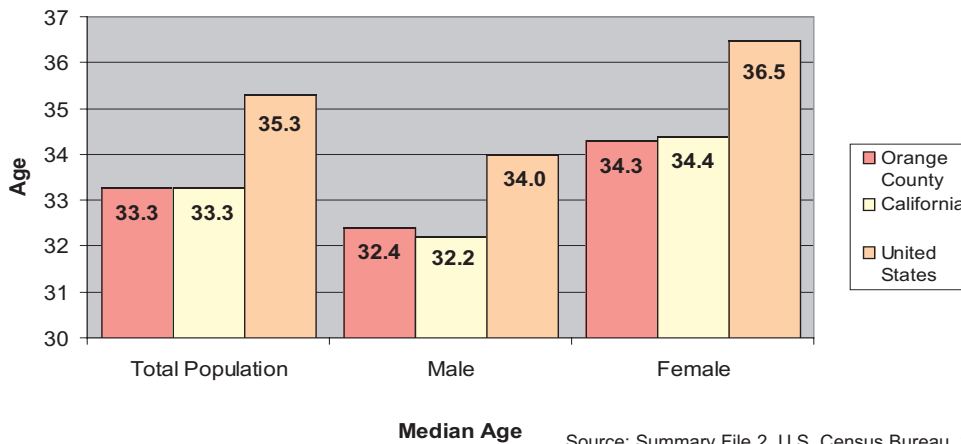
Source: Summary File 2, U.S. Census Bureau, 2000.

Table 1
Households by Householder Relationship Type
California and Orange County, 2000

Householder Type	California		Orange County	
	Number	Percent	Number	Percent
Unmarried-partner households:	683,516	5.9%	46,808	5.0%
Male householder and male partner	49,614	0.4%	2,901	0.3%
Male householder and female partner	323,236	2.8%	23,546	2.5%
Female householder and female partner	42,524	0.4%	2,623	0.3%
Female householder and male partner	268,142	2.3%	17,738	1.9%
All other households:	10,819,354	94.1%	888,479	95.0%
Total:	11,502,870	100.0%	935,287	100.0%

Source: Summary File 2, U.S. Census Bureau, 2000.

Chart 2
Median Age for Orange County, California and
United States, 2000



Source: Summary File 2, U.S. Census Bureau, 2000.

AGE

The median age for the total population of Orange County was 33.3 years. California's median age was the same, but the United States' was higher at 35.3. The median age for Orange County females (34.3) was noticeably different than males, being almost two years higher than males (32.4, Chart 2).

On page 4, multiple race and ethnicities are displayed in population pyramids displaying each population by sex and age group. The total population of Orange County showed two obvious bulges, one in youths ages 0-14 years and then another in the groups 35-45. The latter group is known as the baby boomers. The White alone pyramid shows similar trends to the total Orange County population, this is due to non-Hispanic Whites accounting for 64.8% of the total Orange County population. This pyramid shows a more pronounced bulge in the youth and baby boomer age groups.

When looking at the other race categories: African American or Black, Asian, Native Hawaiian and Pacific Islander, American Indian and Alaska Native, Some Other Race and Two or more races, there are several striking elements. In comparison to the White alone group, all other race categories had a smaller percent of their total population in the highest age groups of 75 years and above. The largest age group in the African American or Black alone was the 35-39 group. The Some Other Race alone and Two or more races have a noticeably large youth populations. The Two or more race category is

shaped more like a true pyramid, showing a larger number of children than in any other age group. Elaborating on this, it can be hypothesized that mixed-races couples having children are more common now than in years past. The Native Hawaiian and Other Pacific Islander category had a more uniform population under the age of 40 with an average of over 8% of the total population in each age group. The Asian alone category showed the bulk of the population as middle age, with a smaller proportion of the total population being children.

Within the Asian population, five ethnic categories have been displayed. In the Chinese alone group it is apparent that the female population was larger than the male population (52.1% vs. 47.9%). Koreans also showed a larger female population at 52.4%, along with Filipino females at 54.7% of the total population. The Japanese population's largest age groups are between 35-44 years, with a much larger elderly population (65 and over) than any other group. The Vietnamese alone showed a considerable drop off under the age of 25, which may be due to the large numbers of refugees that immigrated to the United States 20-25 years ago.

Of the total population in Orange County,

Table 2
Persons Per Dwelling Unit by Census Place and Type
Orange County, 2000

Place	All Units	Owner Occupied	Renter Occupied
California	2.87	2.93	2.79
Orange County	3.00	2.96	3.05
Aliso Viejo CDP	2.49	2.62	2.23
Anaheim	3.34	3.24	3.45
Brea	2.70	2.88	2.37
Buena Park	3.32	3.28	3.36
Costa Mesa	2.69	2.66	2.71
Coto de Caza CDP	3.22	3.24	2.83
Cypress	2.93	2.96	2.87
Dana Point	2.41	2.38	2.46
Foothill Ranch CDP	2.86	3.07	2.16
Fountain Valley	3.00	3.07	2.79
Fullerton	2.83	2.87	2.77
Garden Grove	3.56	3.49	3.67
Huntington Beach	2.56	2.58	2.54
Irvine	2.66	2.78	2.46
La Habra	3.08	3.04	3.13
La Palma	3.09	3.13	2.96
Laguna Beach	2.05	2.23	1.78
Laguna Hills	2.82	2.89	2.63
Laguna Niguel	2.65	2.68	2.56
Laguna Woods	1.40	1.42	1.31
Lake Forest	2.89	2.93	2.79
Las Flores CDP	2.91	3.15	2.21
Los Alamitos	2.62	2.74	2.52
Mission Viejo	2.84	2.87	2.71
Newport Beach	2.09	2.30	1.83
Newport Coast CDP	2.67	2.68	2.37
Orange	3.02	2.91	3.20
Placentia	3.07	2.92	3.40
Portola Hills CDP	2.95	2.98	2.57
Rancho Santa Margarita	2.90	3.06	2.35
Rossmoor CDP	2.77	2.80	2.55
San Clemente	2.56	2.59	2.51
San Joaquin Hills CDP	2.15	2.56	1.62
San Juan Capistrano	3.06	2.91	3.60
Santa Ana	4.55	4.54	4.57
Seal Beach	1.83	1.80	1.94
Stanton	3.43	3.18	3.66
Tustin	2.82	2.70	2.93
Tustin Foothills CDP	2.89	2.87	3.21
Villa Park	3.07	3.05	3.46
Westminster	3.32	3.21	3.48
Yorba Linda	3.05	3.11	2.71
Remainder Unincorporated	3.19	3.17	3.22

Note: Highlighted cells show type of unit with a higher persons per unit.

Source: Summary File 2, U.S. Census Bureau, 2000.

approximately one-third reported being Hispanic or Latino. The corresponding pyramid shows a much larger youth population than any other pyramid shown. When looking at the three ethnic breakdown categories, the Mexican pyramid, which parallels the Hispanic or Latino pyramid, shows the two bulges at the

youth and 20-35 year age groups. Mexicans also showed a larger male population at 52.1%, which is most likely explained by the large number of males that come to United States for work and do not necessarily have their families here. The same may be said for the Guatemalan and Salvadoran populations which revealed the same trend. Puerto Ricans exhibited a more uniform average within the age cohorts under the age of 44 and a larger female population at 52.3%. Other Hispanic or Latinos showed a larger age group under the age of 40, averaging over 8% of the population.

MAP

Almost three percent of Orange County's population lived in Census Tracts with a majority population of non-Hispanic Asians. An almost equal percent of the county population lived in either a Hispanic majority or no majority census tract (22.4% and 20.4% respectively). The majority of Orange County's population lived in census tracts where non-Hispanic Whites accounted for over 50% of the total census tract population.

*Note: Due to the minimum 100 persons threshold of this dataset, the total population in this table and map do not equal the 2,846,289 as the official census count of Orange County's population.

Table 3 displays the population totals shown in Chart 3.

Table 3
Orange County Population by Race and
Selected Ethnicity, 2000

Race/Ethnicity	Number
White alone	1,844,652
Black or African American alone	47,649
American Indian and Alaska Native alone	19,906
Asian alone	386,785
Chinese alone	59,717
Filipino alone	48,946
Japanese alone	31,283
Korean alone	55,573
Vietnamese alone	135,548
Native Hawaiian and Other Pacific Islander alone	8,938
Some other race alone	421,208
Two or more races	117,151
Hispanic or Latino (of any race)	875,579
Mexican	712,496
Puerto Rican	8,877
Other Hispanic or Latino	147,503
Salvadoran	11,892
Guatemalan	7,879
Total population	2,846,289

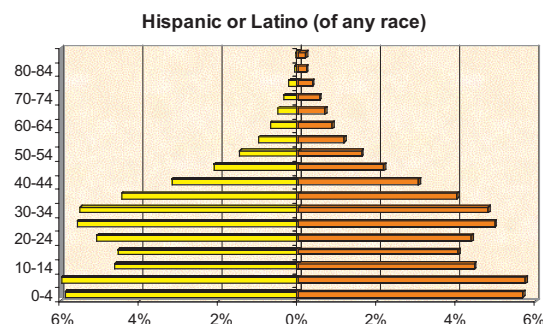
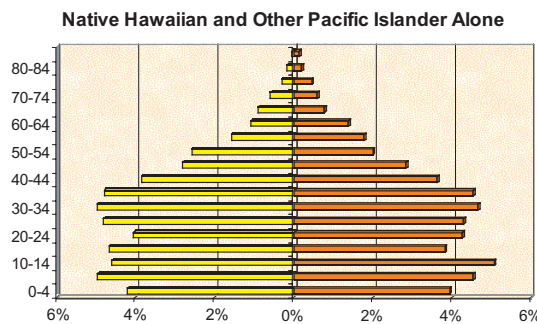
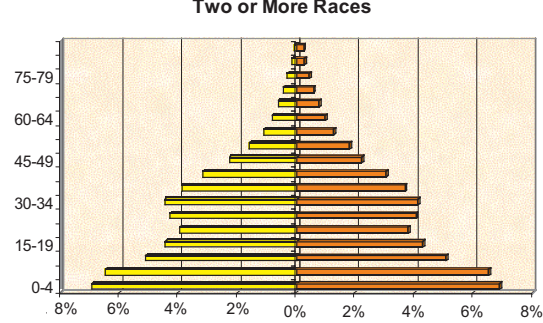
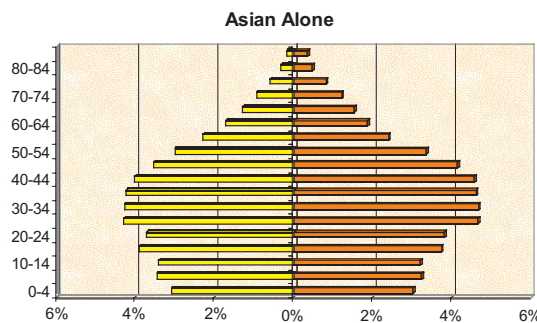
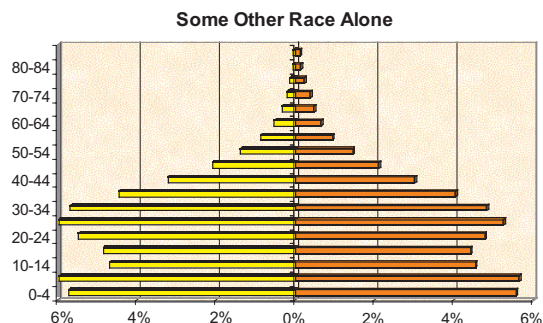
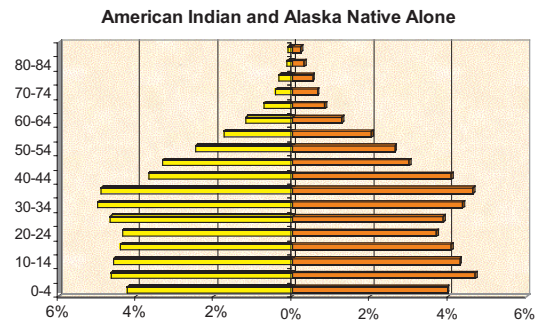
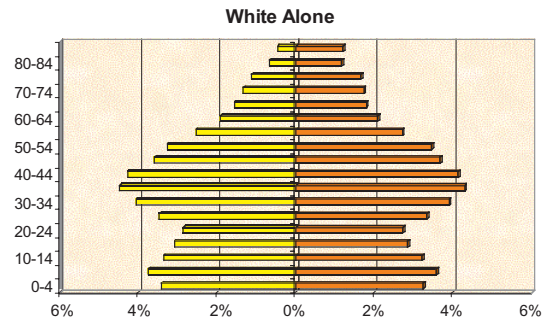
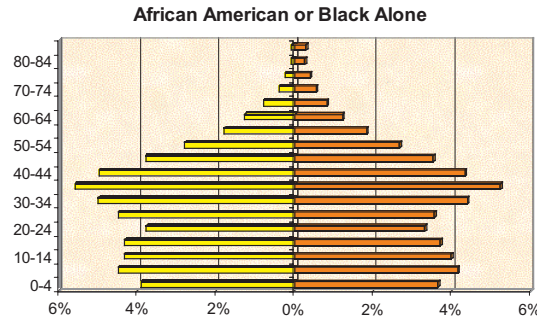
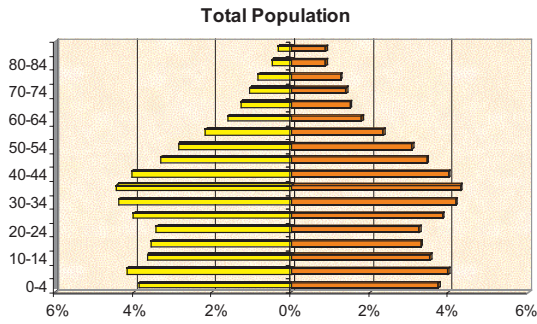
Source: Summary File 2, U.S. Census Bureau, 2000.

Chart 3
Orange County Population by Age, Sex and Race/Ethnicity

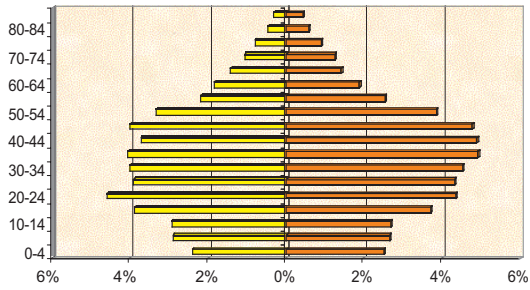
The displayed charts show the percent of each race or ethnic group by age and sex. The yellow bars display the male population and the orange bars represent the female population.

Male
 Female

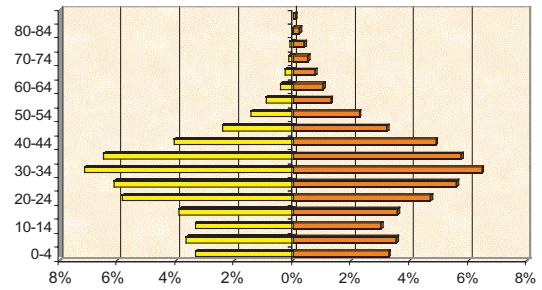
Population totals are displayed in Table 3.



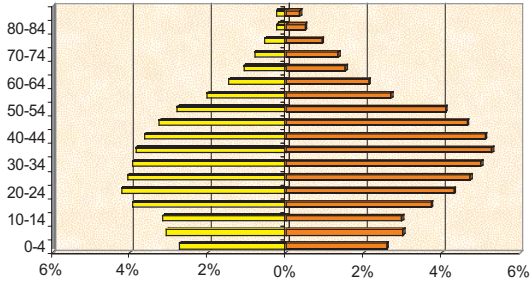
Chinese Alone



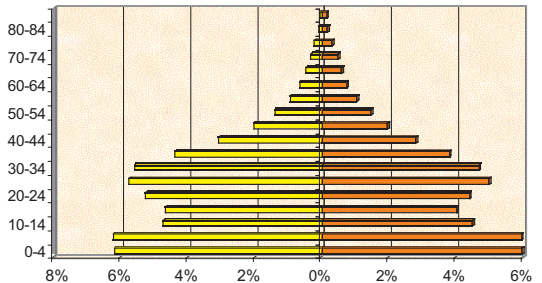
Guatemalan



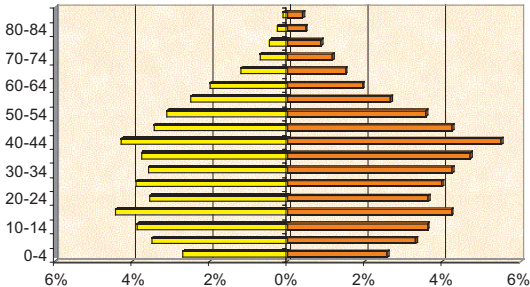
Filipino Alone



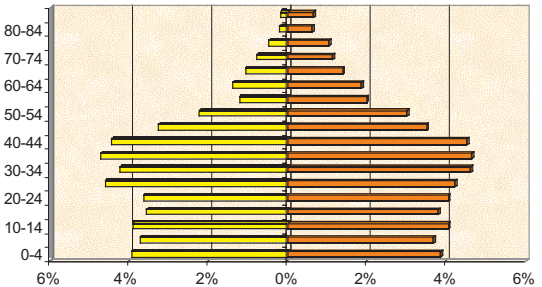
Mexican



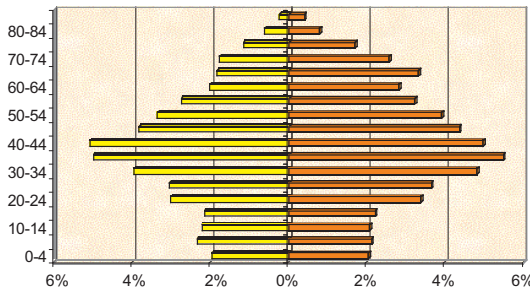
Korean Alone



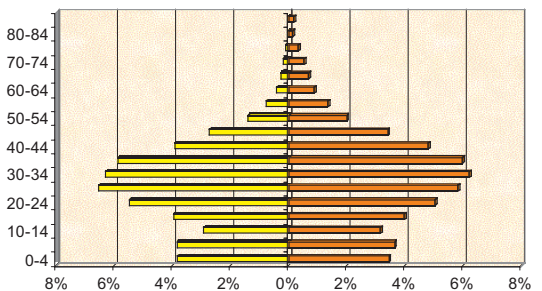
Puerto Rican



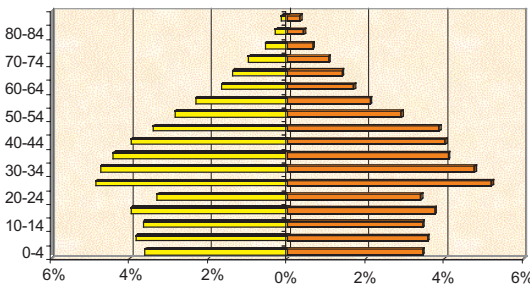
Japanese Alone



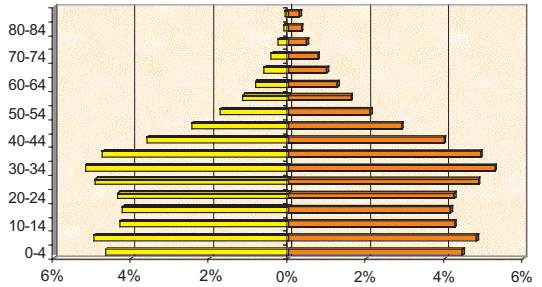
Salvadoran



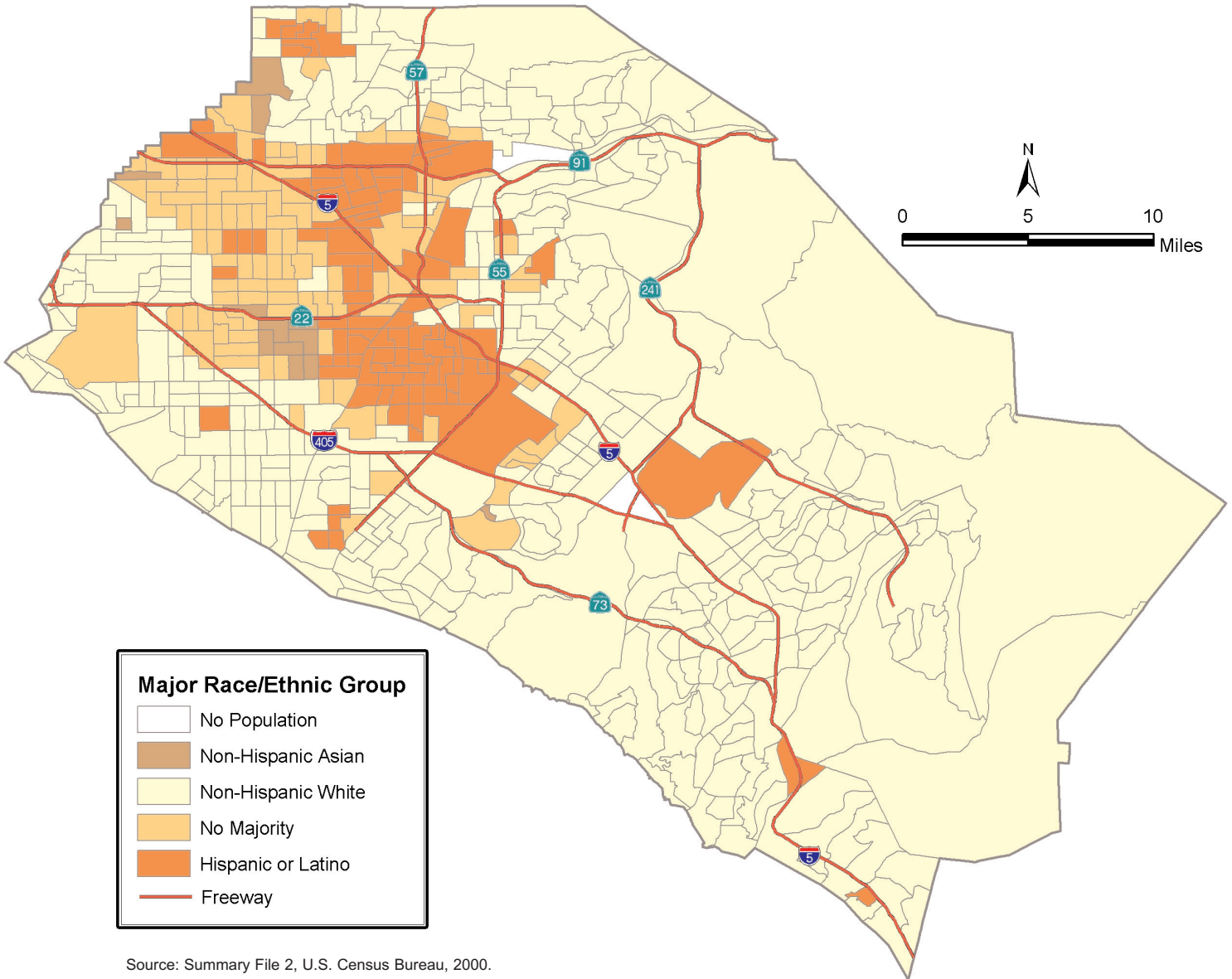
Vietnamese Alone



Other Hispanic or Latino



Majority Race or Ethnic Group by Census Tract Orange County, 2000



PROFILES IS PRODUCED BY THE CENTER FOR DEMOGRAPHIC RESEARCH, CALIFORNIA STATE UNIVERSITY, FULLERTON.

PROFILES IS A QUARTERLY PUBLICATION THAT FOCUSES ON DEMOGRAPHIC ISSUES IN ORANGE COUNTY.

THIS ISSUE WAS AUTHORED BY DEBORAH STICKLEY DIEP.

WE WELCOME COMMENTS & SUGGESTIONS AND CAN BE REACHED AT (714)278-3009. [HTTP://WWW.FULLERTON.EDU/CDR](http://www.fullerton.edu/cdr)

