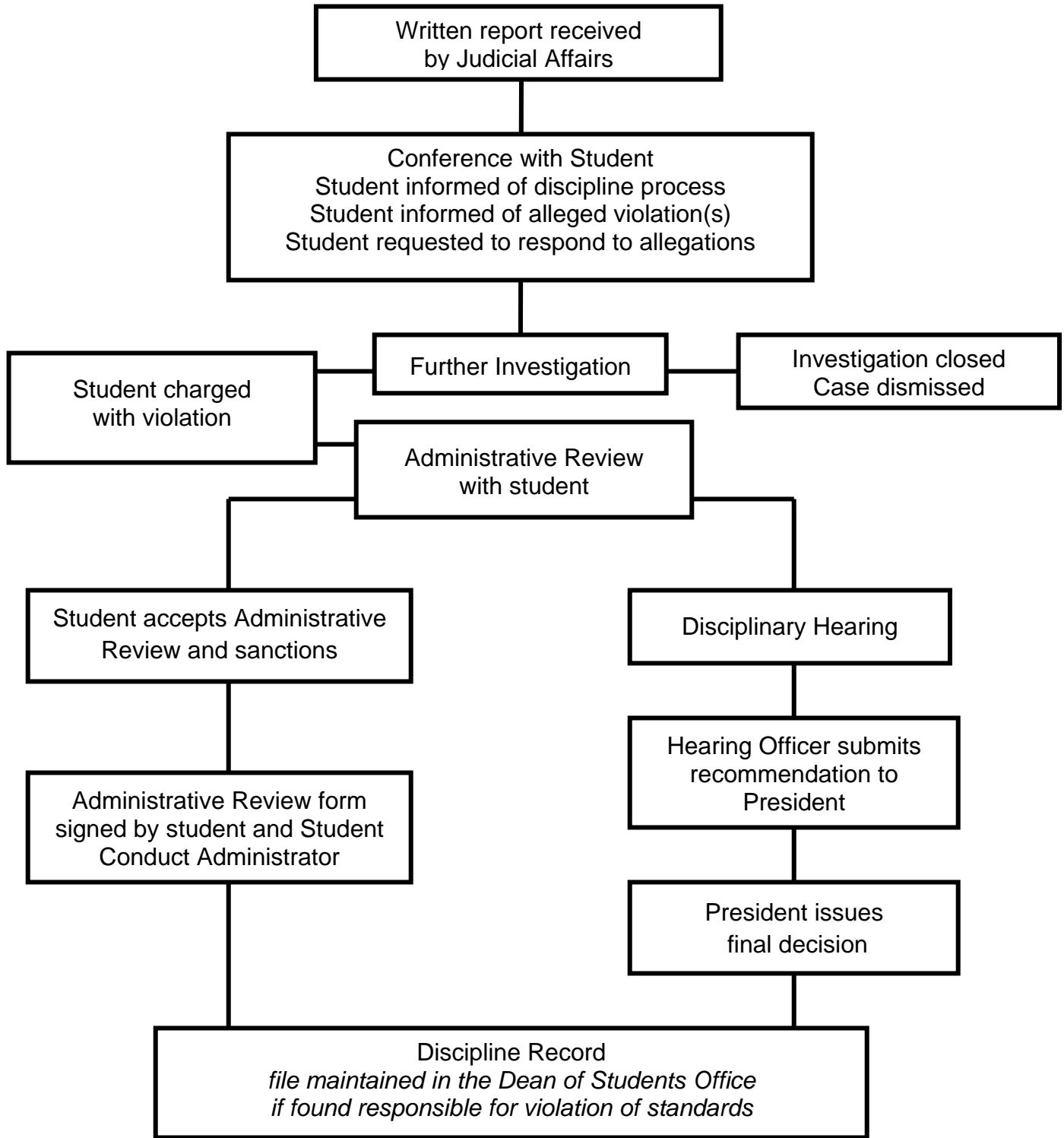


**California State University, Fullerton
STUDENT CONDUCT PROCESS**



This chart represents an overview of the university's student discipline process and is not the official statement on University policies and procedures. Please refer to California State University Student Conduct Procedures, Executive Order 1043, 2009, California Code of Regulations, Title 5, Standards for Student Conduct, 41301, 2005, Expulsion, Suspension, and Probation of Students, 1982; Academic Dishonesty, University Policy Statement, UPS 300.021, 2010, Academic Appeals Policy, University Policy Statement, UPS 300.030, 2005.