

# Conference Information & Registration

## University Leadership Conference CALIFORNIA STATE UNIVERSITY FULLERTON

Saturday, March 20, 2004



Sponsored by Dean of Student Office-  
Leadership & Multicultural Development Programs

CAL STATE FULLERTON

STUDENT AFFAIRS

**An all day  
event to strengthen  
your leadership abilities**



Dean of Students Office  
Leadership & Multicultural Development Programs  
California State University, Fullerton  
P. O. Box 6830  
Fullerton, CA 92834-6830

**The Seventh Annual University Leadership Conference  
Titan Student Union, Cal State Fullerton  
Saturday, March 20, 2004**

**About the Conference . . .**

Please join us for the 7<sup>th</sup> annual Cal State Fullerton's University Leadership Conference. The conference is a day long event focused on providing you with practical and applicable training to help you become a strong and effective leader. This event is an opportunity for you to explore your leadership values while gaining additional skills and exploring various leadership topics such as diversity and social justice. You will also have opportunities to interact with other college students who are at various levels in their leadership development training. The conference will provide you with the skills needed to succeed not only on your campus, but also in the professional field of your choice.

**About the theme . . .**

This year's conference workshops and speakers will focus on orienting students on some of the essential elements of leadership. The conference workshops and events will provide you with an opportunity to discover your leadership potential, examine the type of leader you want to be, explore ways to enable others to grow as leaders, and discover ways to effect change and make a difference on your college campus and in your community.

The first step to being an effective leader is gaining a better understanding about you. Learning more about yourself, and how you lead, will help you to develop mutual beneficial relationships with others who will collaborate with you on the leadership process in the future. Although leadership can be learned throughout your lifetime, we hope the conference will orient you to the following elements essential to the leadership process:

- ?? Life Long Learning
- ?? Empowerment
- ?? Attitude
- ?? Discovery
- ?? Ethics
- ?? Risk Taking
- ?? Self-Discovery
- ?? Honor
- ?? Integrity
- ?? Partnerships

# Registration Form

Please complete all sections of the registration form. Type or print clearly. You must complete a separate registration form for each individual attending. Submit completed forms to:

Cal State Fullerton  
Dean of Students Office, TSU 235  
P.O. Box 6830  
Fullerton, CA 92834-6830  
(714) 278-3211  
(714) 278-5109 - Fax

NAME: \_\_\_\_\_

CWID: (CSUF Students Only) \_\_\_\_\_

CAMPUS: \_\_\_\_\_

ORGANIZATION: \_\_\_\_\_

ADDRESS: \_\_\_\_\_

CITY: \_\_\_\_\_ ZIP CODE: \_\_\_\_\_

EMAIL: \_\_\_\_\_

HOME/CELL PHONE: \_\_\_\_\_

CLASS LEVEL: Fr / So / Jr / Sr / Gr Major: \_\_\_\_\_

Please list any special physical, medical or dietary (i.e., vegetarian) conditions of which we should be aware:  
\_\_\_\_\_

I am interested in being a conference volunteer  Yes  No

CONFERENCE FEE	EARLY REGISTRATION BEFORE 03/12/04	LATE REGISTRATION AFTER 03/15/04
CSUF Students	\$10.00	\$15.00
Non-CSUF Students	\$15.00	\$20.00
<b>TOTAL FEE</b>		

**Payment Method:** Payment must accompany your registration. Make checks payable to Cal State Fullerton. Cash payment is also accepted. Please do not mail cash.



### Leadership Certification

Every participant who attends the full length of the conference will receive a certificate. The certificate will verify your training and attendance at the conference.

You are strongly encouraged to list your conference participation on your resume and share your training with future employers.

### Conference Registration Fee

Space is reserved on a first come, first serve basis. Register early by completing and returning the enclosed application. You can register on the day of the conference, but we strongly encourage you to register early in order to ensure a space.

CONFERENCE FEE	EARLY REGISTRATION BEFORE 03/12/04	LATE REGISTRATION AFTER 03/15/04
CSUF Students	\$10.00	\$15.00
Non-CSUF Students	\$15.00	\$20.00

### The Conference Registration Fee Includes:

- ?? Conference attendance
- ?? Materials
- ?? Continental breakfast and lunch

### Refunds and Cancellations

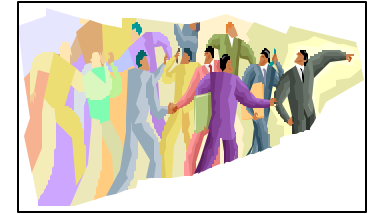
Sorry, refunds are not available. Please plan your schedule accordingly to avoid cancellations.

### For Information or Questions

Call or visit the Dean of Students Office, located in the Titan Student Union, Room 235 or at (714) 278-3211. The Dean of Students Office is open Monday thru Friday

# Conference Schedule

- 8:00 Check-In
- 8:45 Opening
- 9:00 Keynote Speaker
- 10:40 Workshop Session I
- 11:40 Networking Mixer
- 12:00 Lunch
- 12:50 Workshop Session II
- 2:00 Workshop Session III
- 3:00 Community Service Project
- 4:00 Closing Speaker
- 4:30 Closing and Evaluations



**"It is estimated that 70% or 19,600 of the homeless in Orange County are homeless families with children."**

### Community Service Project to Benefit Homeless Families

Over 23,000 people are homeless in Orange County. Every conference participant is asked to bring a sample size of toiletries that they may have at home. They will be collected at the conference and prepared into hygiene packets to be given the Orange Country Rescue Mission.

### Items Needed

Donations of soap, over-the-counter medications, deodorant, socks, shampoo, feminine hygiene products, toothbrushes, toothpaste, washcloths, and basic toiletries (sample size) are needed.

### How You Can Help

You can donate items in two ways:

- 1.) Bring your item on the day of the conference,
- 2.) Donate your items before the conference by visiting the Volunteer and Service Center in Titan Student Union, room 2 from March 1 through March 19.

# Conference Workshops & Speakers

By attending, you will hear motivational keynote speakers and can participate in a variety of workshops focused on diverse leadership topics. The conference is also a good way to meet other college students, participate in networking opportunities, and experience special events, such as our site community service project to benefit homeless families

## What types of workshops can I attend ?

You can attend workshop sessions which focus in the following core areas:

### LEADERSHIP

Workshop sessions which focus on the individual and group skills needed for effective leadership, and the exploration of leadership styles and values.



### DIVERSITY

Workshop sessions which focus on diversity, racism, advocacy, pluralism, ethnicity, oppression or other current social issues facing our multicultural communities.

### SOCIAL JUSTICE

Workshop sessions which focus on the civic responsibility, volunteerism, activism, and leadership for social or community change.



### FEATURED SPEAKERS

You will experience Keynote and Closing speakers who are inspiring and motivational. Our featured speakers will share their leadership successes and hardships. Their speeches will help you define your role as a leader and understand your role in the community.

# More Conference Information



## Who should attend ?

Whether you are a new or seasoned leader, the conference will offer training to meet your needs. All college students are welcome to attend whether you are an emerging, intermediate, or advanced leader. Members of clubs and organizations, Greek Life, Residence Halls, orientation leaders, and student government leaders are especially encouraged to attend.

## What leadership level are you?

- A. **I am an Emerging Leader:** " I am in the beginning stages of developing my leadership skills. I'm still trying to figure out if I am a leader and want to get involved in activities to help me explore my leadership potential."
- B. **I am an Intermediate Leader:** " I am currently involved in some type of activity either on campus or in the greater community. I see myself as a leader and want to take that next step by taking a more visible role."
- C. **I am an Advanced Leader:** " I currently hold a leadership role and have served in one or more positions. I want to continue to refine my skills and encourage others to take on leadership roles."

## How should I dress for the conference?

The conference dress is casual. Show your school spirit by wearing clothing with your campus or organization name on it.

## Do I need to attend the entire conference?

No you do not, but you are strongly encouraged to attend the entire conference in order to reap the most benefits. Students who participate in the full length of the conference will receive a certificate verifying their participation.