



Beyond Compare

Download & Installation

1. Go to <http://sts.fullerton.edu/software/BeyondCompare>
2. Click on the **"Get a Personal Beyond Compare License"** link.
3. Login and Accept the End User Agreement (EULA).
4. Go to <http://sts.fullerton.edu/software/BeyondCompare>
5. Click on the **"Download Beyond Compare"** link.
6. Install & Activate the software based on your operating system.

Detailed Instructions Below





Step 1 – Accept EULA & Get the License Key

1.

GO TO:

sts.fullerton.edu/Software/BeyondCompare

CLICK ON:

Get a Personal Beyond Compare License

Beyond Compare

Each enrolled CSUF student is entitled to **ONE** license for **AT HOME USE**.

Beyond Compare allows you to quickly and easily compare your files and folders. By using simple, powerful commands you can focus on the differences you're interested in and ignore those you're not. You can then merge the changes, synchronize your files, and generate reports for your records.

You can get a **FREE** personal license through the CSUF e-licensing store and download and install Beyond Compare on your own computer. All personal licenses will expire on July 1st, 2017.

STEP 1:

[GET A PERSONAL BEYOND COMPARE LICENSE](#)

STEP 2:

[DOWNLOAD BEYOND COMPARE*](#)

***Note:** You are downloading the trial version that needs to be activated with the license key received in the previous step.

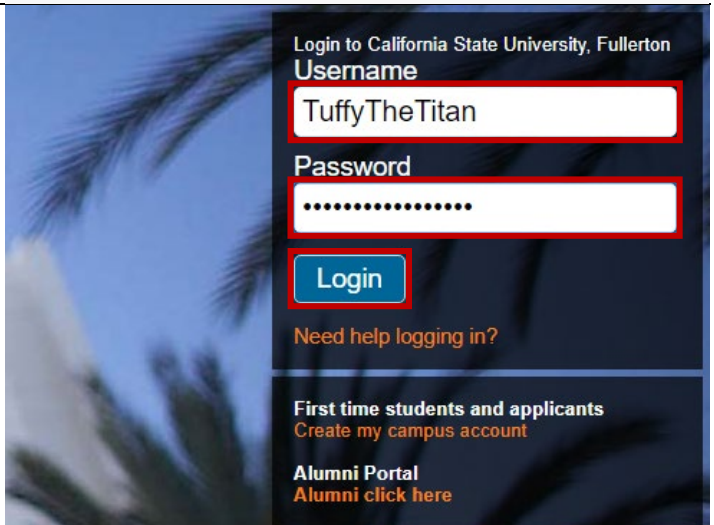
2.

ENTER:

Your Portal Username & Password

CLICK ON:

Login



3.

CLICK ON:

The check box to accept the terms of the End User License Agreement (EULA).

CLICK ON:

Get Beyond Compare License Key

NOTE:

The License Key provided will be needed later.

nt or encumbrance that conflicts with this Agreement; (b) the Software does not, to the best of Scooter Software's knowledge, infringe t Software is not contaminated by harmful code (e.g., self-propagating program instructions commonly called viruses, worms or Trojans)

LEGAL DISCLAIMER

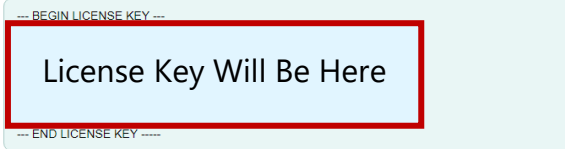
for the limited warranties set forth herein. THE SOFTWARE AND DOCUMENTATION ARE PROVIDED "AS IS." TO THE MA ANTIES, EITHER EXPRESS OR IMPLIED, INCLUDING BUT NOT LIMITED TO IMPLIED WARRANTIES OF MERCHANTABILITY ER SOFTWARE WILL BE LIMITED EXCLUSIVELY TO REFUND OF THE PURCHASE PRICE.

ELLANEOUS PROVISIONS

lidity and interpretation of this Agreement shall be governed by the laws of the United States of America and the State of Wisconsin. C appropriate site of venue for actions relating to this Agreement, and hereby consents to the exclusive jurisdiction and venue of such cc or unenforceable, such provision or part thereof will be severed from the Agreement and the remaining provisions will remain in full fc

By marking this check box, I represent that I have read, understood and agreed to the above End User License Agreeen EULA(s) have been made to me.

[Get Beyond Compare License Key](#)





Step 2 - Download the Software

1.

GO TO:

sts.fullerton.edu/Software/BeyondCompare

CLICK ON:

Download Beyond Compare

Beyond Compare

Each enrolled CSUF student is entitled to **ONE** license for **AT HOME USE**.

Beyond Compare allows you to quickly and easily compare your files and folders. By using simple, powerful commands you can focus on the differences you're interested in and ignore those you're not. You can then merge the changes, synchronize your files, and generate reports for your records.

You can get a **FREE** personal license through the CSUF e-licensing store and download and install Beyond Compare on your own computer. All personal licenses will expire on July 1st, 2017.

STEP 1:

[GET A PERSONAL BEYOND COMPARE LICENSE](#)

STEP 2:

[DOWNLOAD BEYOND COMPARE*](#)

***Note:** You are downloading the trial version that needs to be activated with the license key received in the previous step.

2.

SELECT:

The operating system that the software will be installed on, Mac(MacOS) or PC(Windows)



Beyond Compare

from Hector Ramirez (CSU Fullerton)

Sorted by name



Mac



PC

3.

CLICK ON:

Download (on the top right corner of the page)

CLICK:

Direct download

NOTE:

The Installation file will be saved to your computer as a .zip file.



Download ▾



Direct download

Save to my Dropbox





Step 3 - Install & Activate the Software

1.

LOCATE:

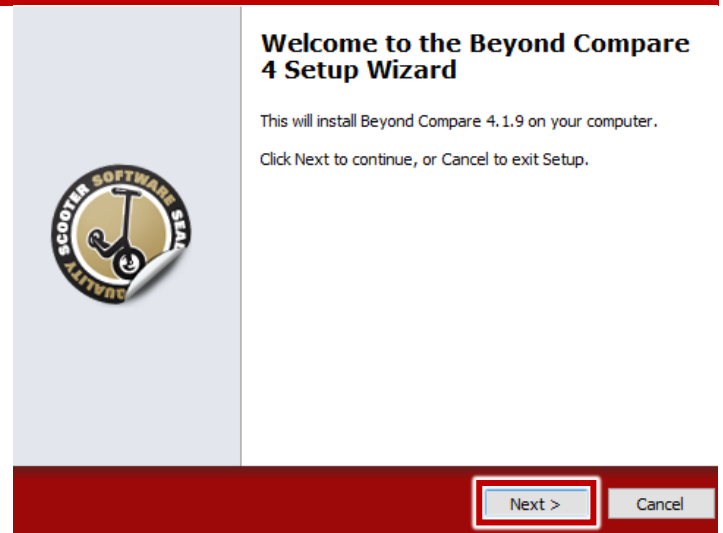
The installation file you downloaded.

RUN:

The installation file.

CLICK:

Next >



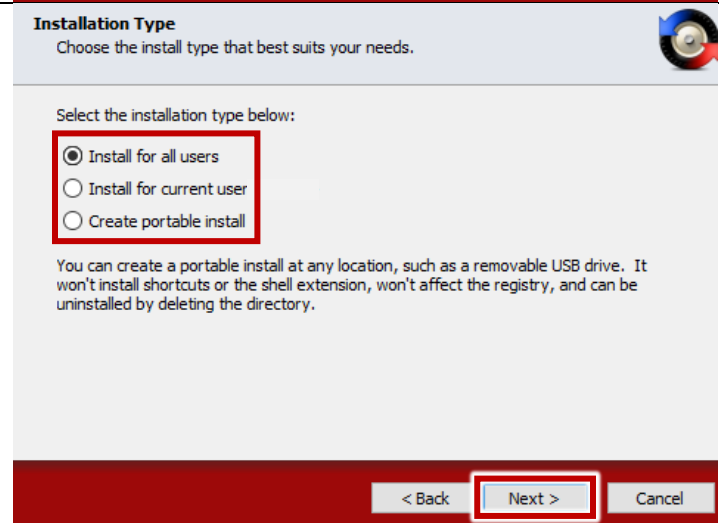
2.

CLICK ON:

Your installation preference. By default, it is set to "Install for all users".

CLICK:

Next >



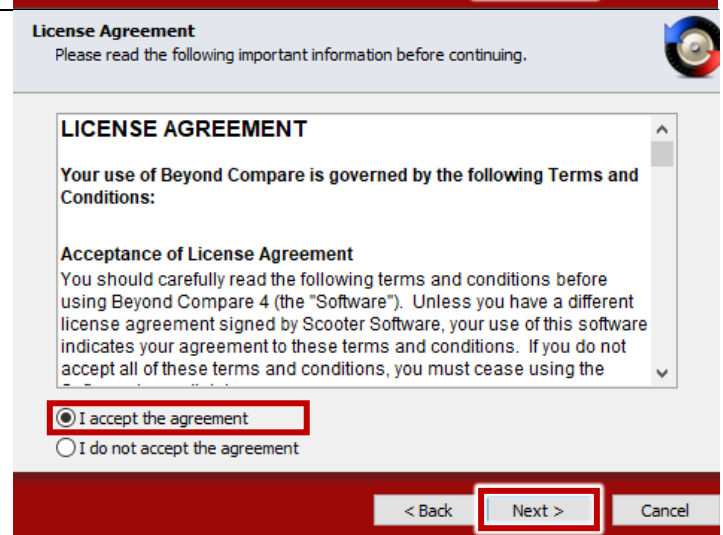
3.

CLICK ON:

"I accept the agreement" to accept the terms of the End User License Agreement (EULA).

CLICK:

Next >





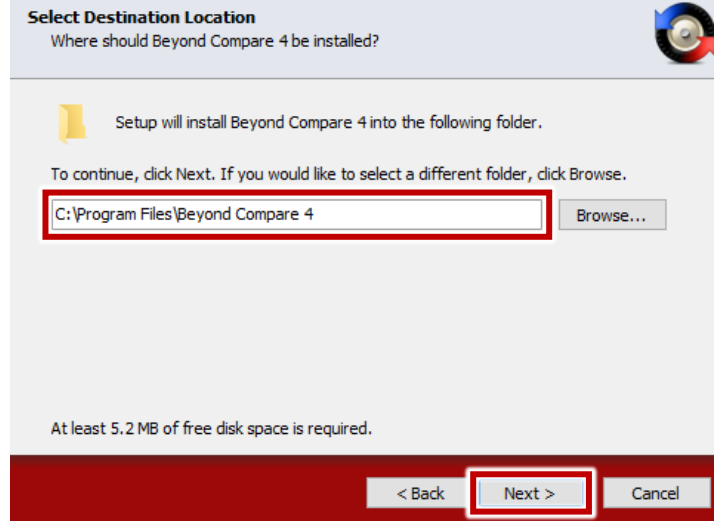
4.

OPTIONAL:

Set your installation path for Beyond Compare

CLICK:

Next >



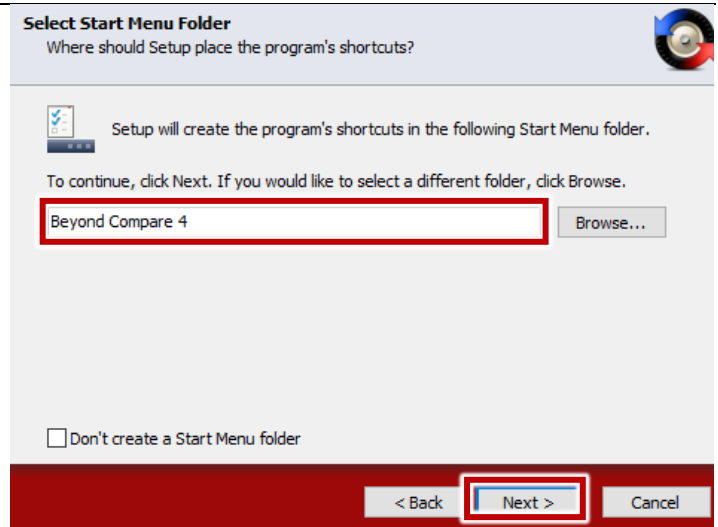
5.

OPTIONAL:

Configure your shortcuts in the Start Menu folder.

CLICK:

Next >



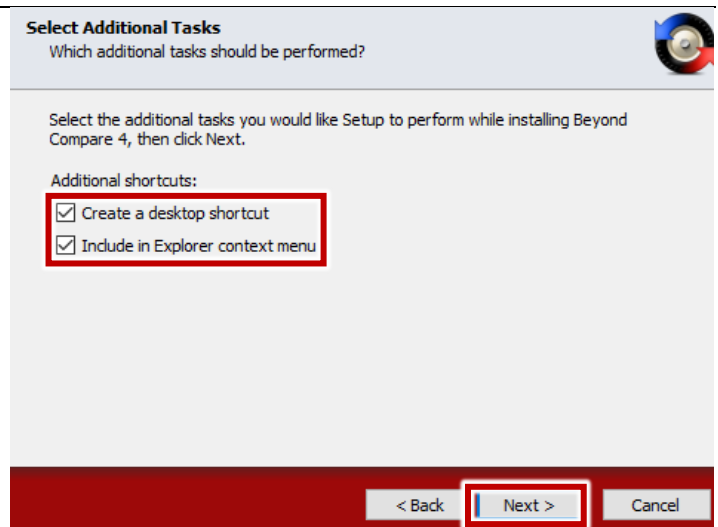
6.

OPTIONAL:

Configure your additional shortcuts for Beyond Compare.

CLICK:

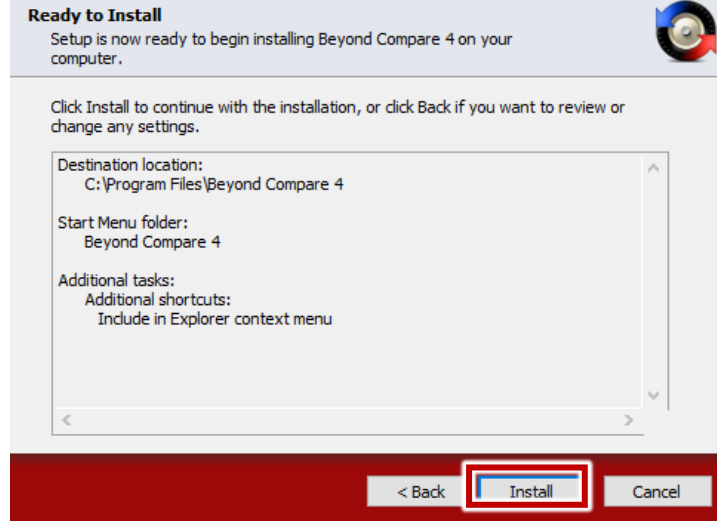
Next >





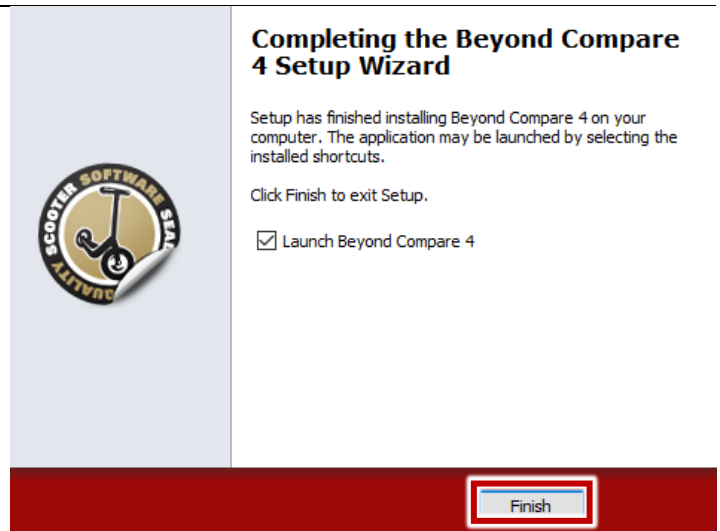
7.

CLICK:
Install



8.

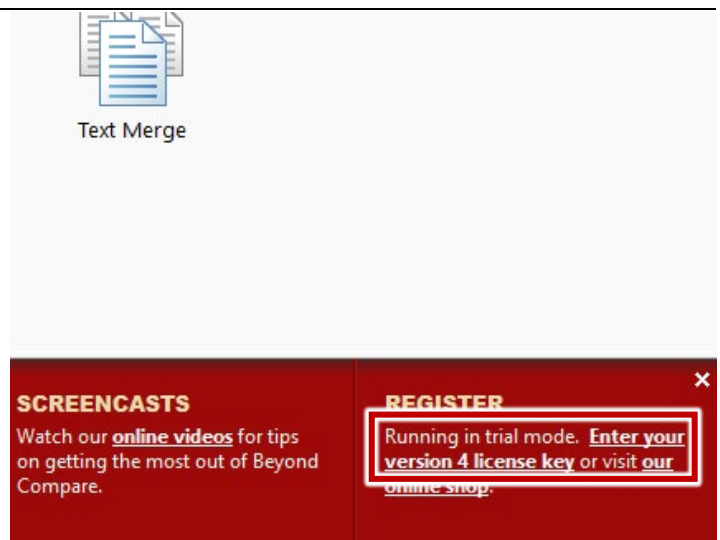
CLICK:
Finish



9.

LAUNCH:
Beyond Compare

CLICK ON:
Enter your version 4 license key (on the bottom right corner of the app)





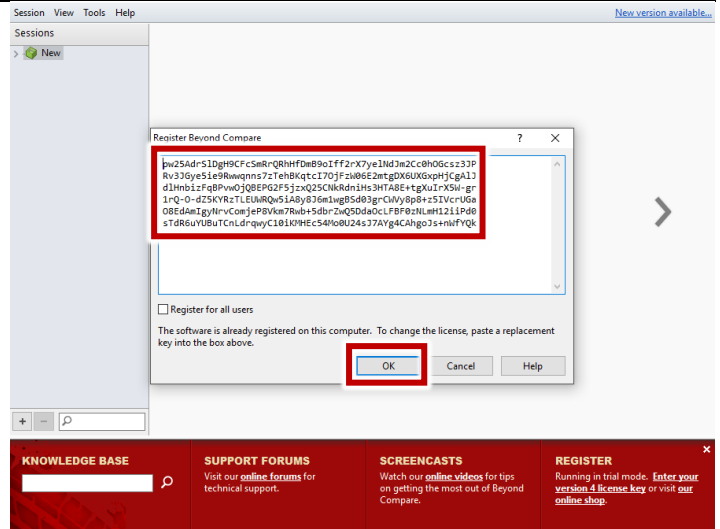
10.

ENTER:

The license key you obtained previously

CLICK:

OK



11.

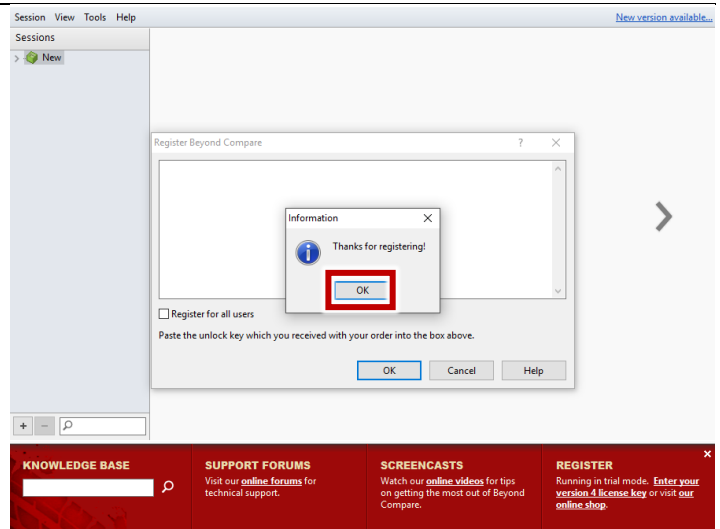
NOTE:

The "Thanks for registering!" information box

CLICK:

OK

Beyond Compare is now Installed & Activated

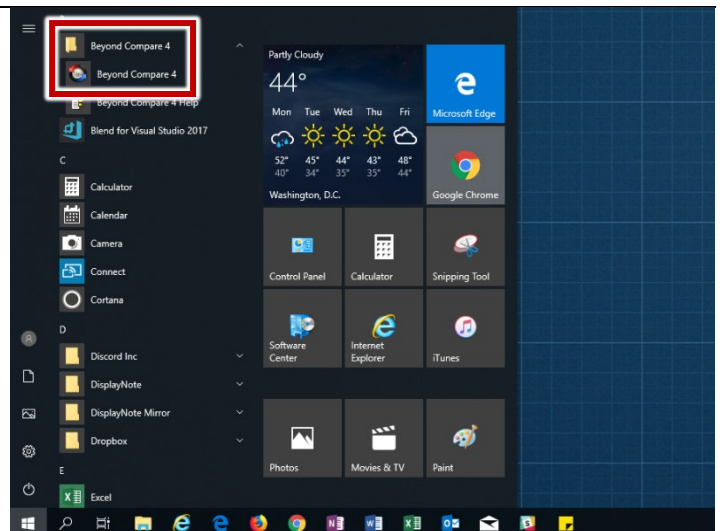


Where is Beyond Compare Located? (Windows)

Select the **"Start"** Button
Apps will be in alphabetical order

Go to the **"B"** Section and you'll find a **"Beyond Compare" Folder**

Open the folder to find **Beyond Compare**





Need help using Beyond Compare?

LinkedIn Learning

Available to all currently enrolled CSUF Students

With over 13,000 courses taught by real-world experts and a library that is constantly up to date

On the Student Portal, search for "LinkedIn Learning" to get started



Need technical assistance?

Contact: The Student IT Help Desk at (657) 278-8888 or StudentITHelpDesk@fullerton.edu.

Visit: The Student Genius Center located on the first floor of Pollak Library North.
Go to the SGC website for hours: <http://sts.fullerton.edu/sgc>.

