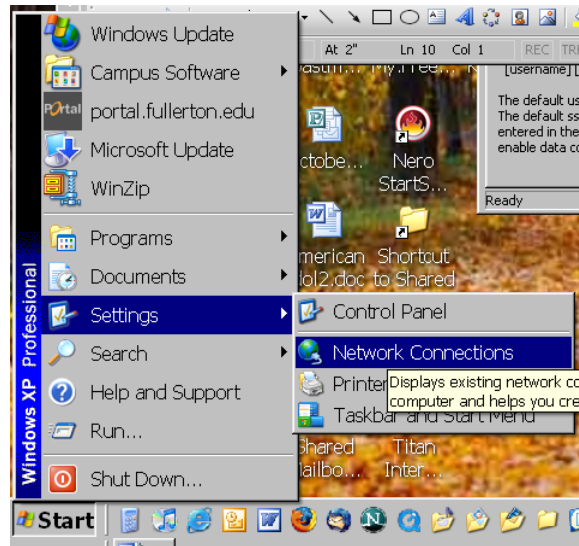


CALIFORNIA STATE UNIVERSITY FULLERTON

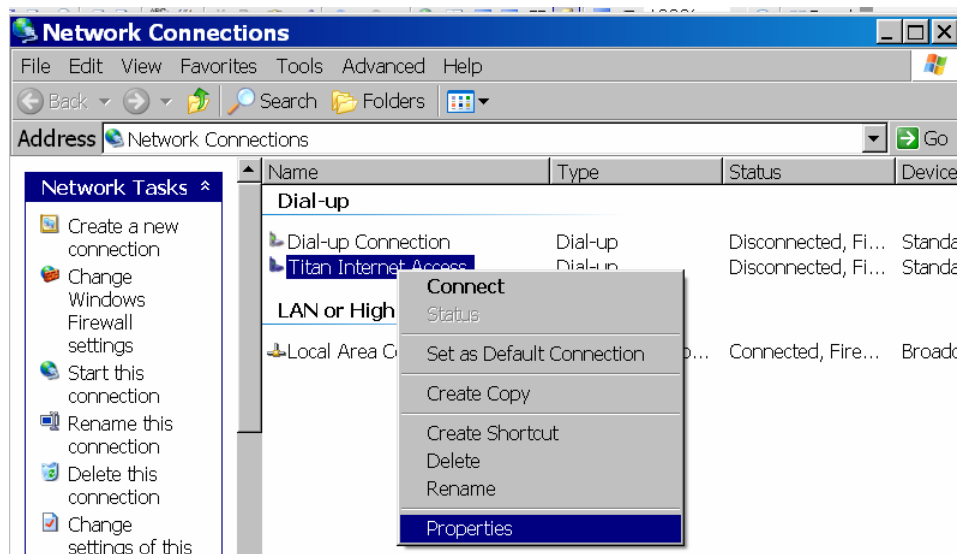
INFORMATION TECHNOLOGY

Modifying an existing dial-up connection to use PAP Authentication- Windows XP

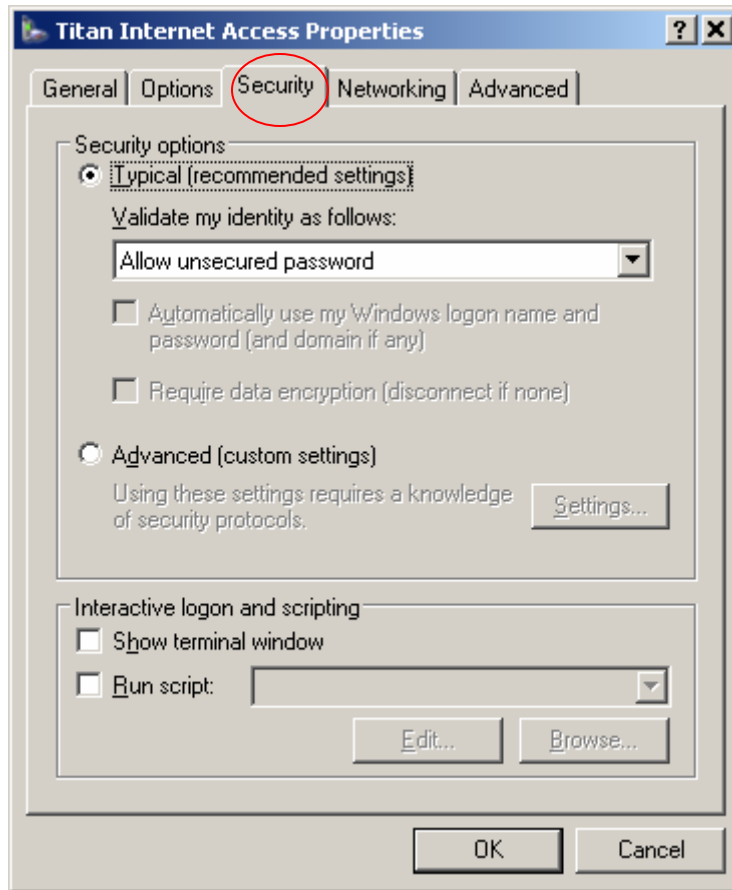
1. Click on Start, Settings, then on Network Connections



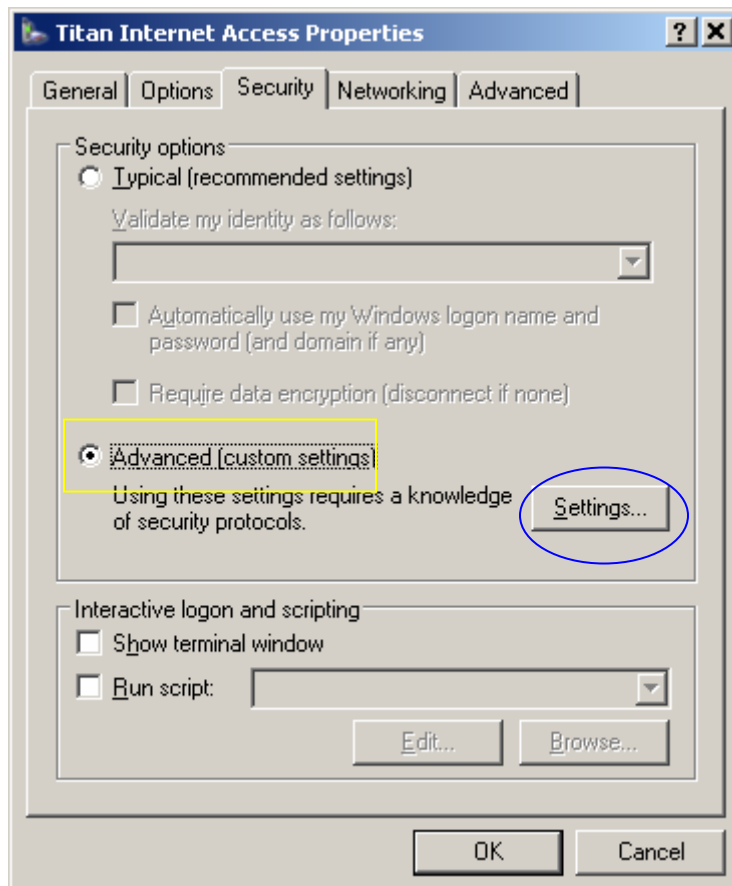
2. In the “Network Properties” window, right-click on the Titan Internet Access connection to be modified and left-click on Properties



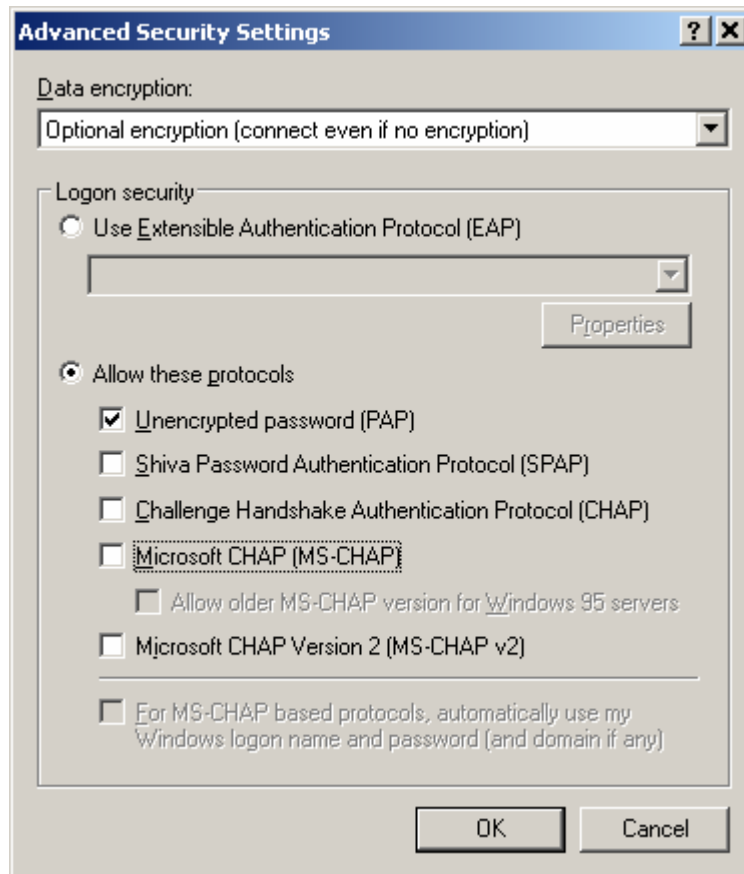
3. Select the Security Tab



4. Select Advanced (custom settings)
5. Click on Settings

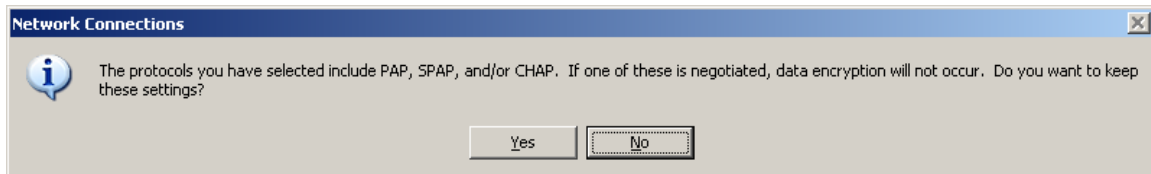


6. Deselect all settings except for Unencrypted password (PAP)



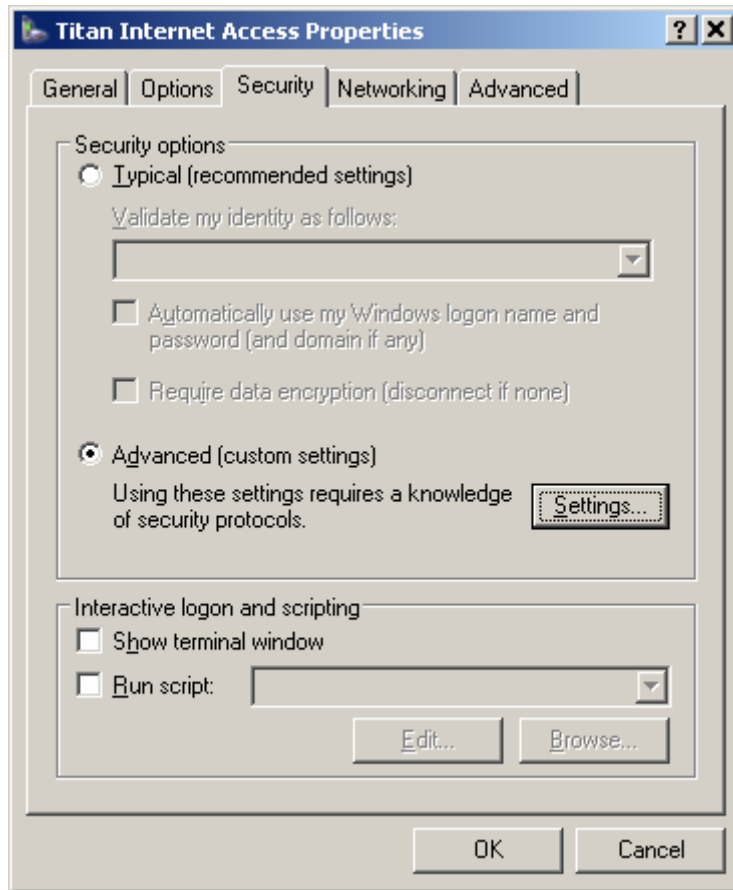
7. Click on OK

8. A message will appear asking you if you want to keep these settings.



9. Click on Yes

10. Click on OK to close the Titan Internet Access properties window



11. The connection is now ready for use. You can enter your e-mail username and password