

THE NEW TITAN INTERNET ACCESS INSTALLATION GUIDE FOR WINDOWS XP

INTRODUCTION

Titan Internet Access is a service offered by Cal State Fullerton that provides Internet connection using your home computer, a modem, and a telephone line. This guide is designed to help you establish an Internet connection using your Titan Internet Access account. Once connected you can browse the World Wide Web, access your email, and access the Library research databases.

In order to access the above services, you need to sign up for Titan Internet Access. If you already have a campus email account, you may apply for a Titan Internet Access account. Please bring your CSUF ID card to the Titan Card office, located in the library next to the circulation desk. If you do not have a campus email account, you will need to obtain one first through your department's IT Coordinator or department head.

For more information on the Titan Internet Access, please visit

http://www.fullerton.edu/it/services/Email_Remote_Access/TIA/index.asp or call our Help Desk at 714-278-7777.

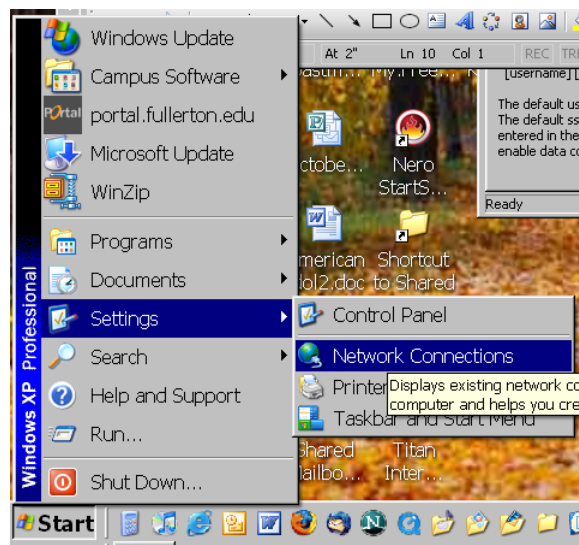
MINIMUM SYSTEM REQUIREMENTS

The following minimum system configurations are required in order to use Titan Internet Access.

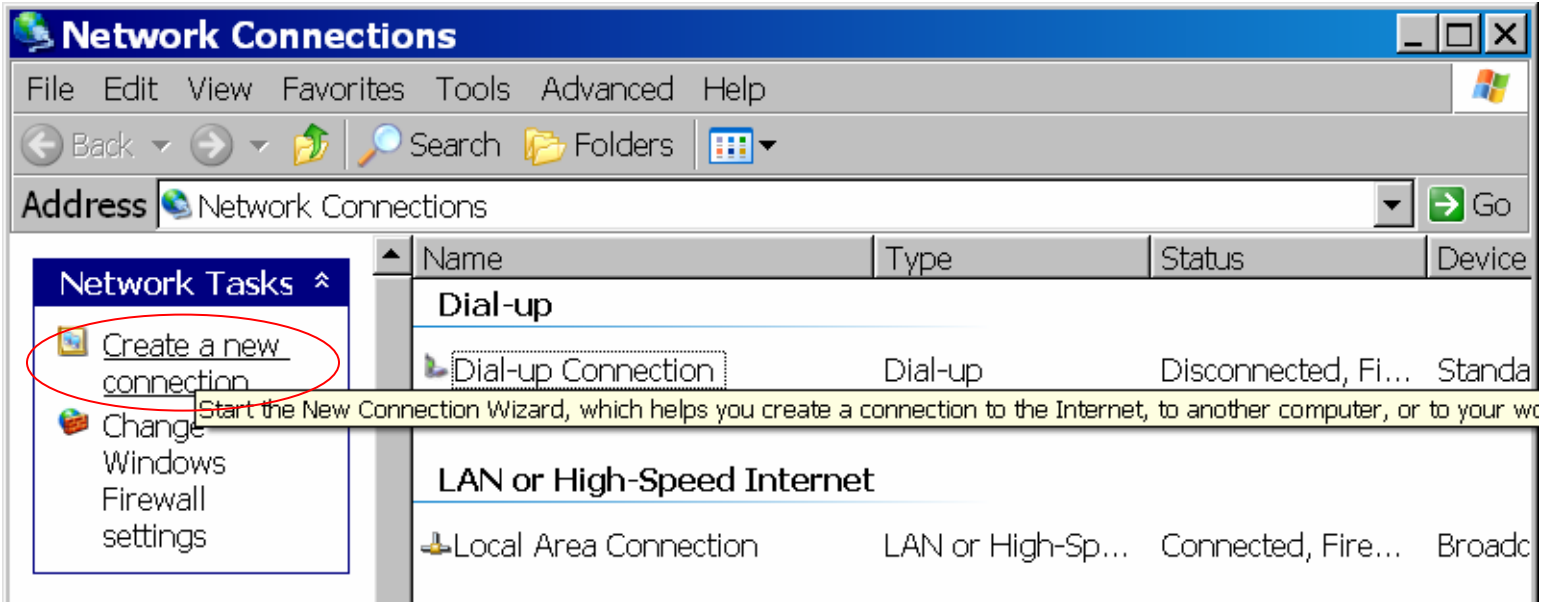
- 486 system or higher
- 40MB Hard-drive space
- 16MB RAM
- High speed modem 28,800bps or faster (**56.6k recommended and properly installed**)
- CD-ROM Drive
- Keyboard / mouse
- VGA monitor

CONFIGURATION

1. Click on Start, Settings, and Click on Network Connections



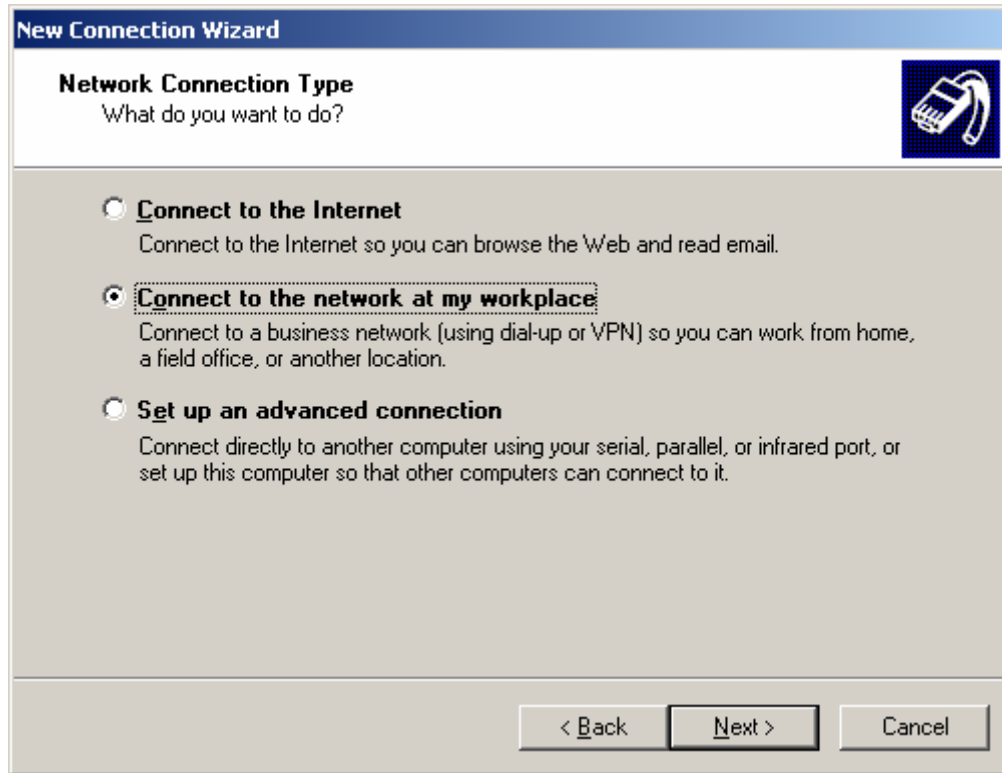
2. Click on Create A New Connection over to the left



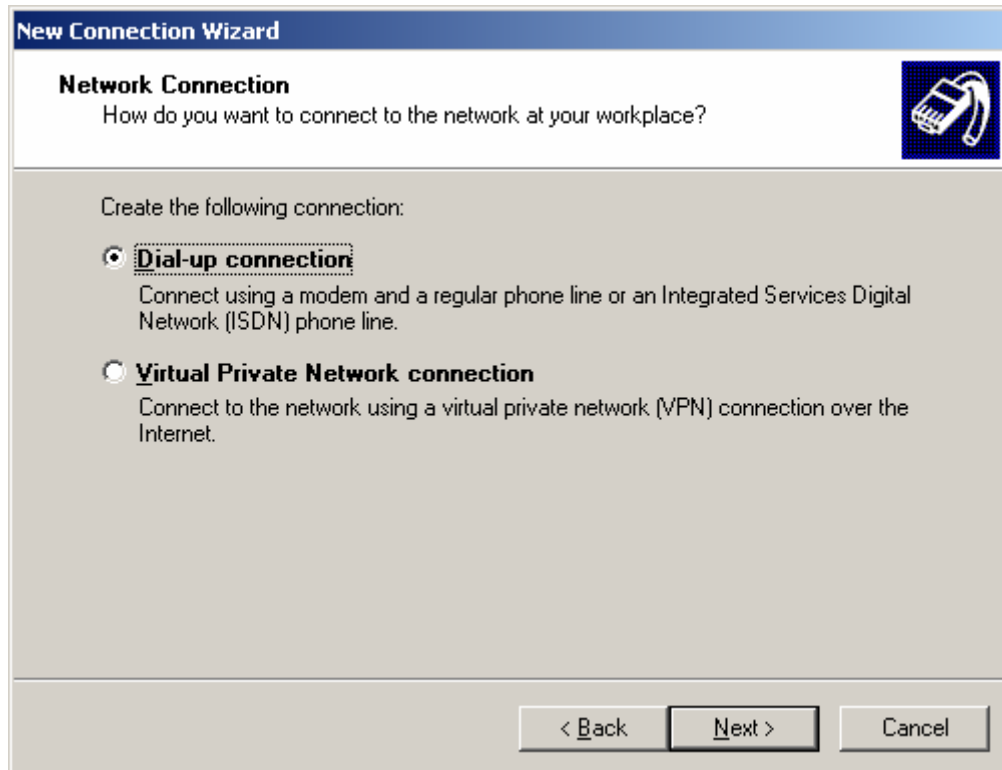
3. The “New Connection Wizard” window will appear. Click Next



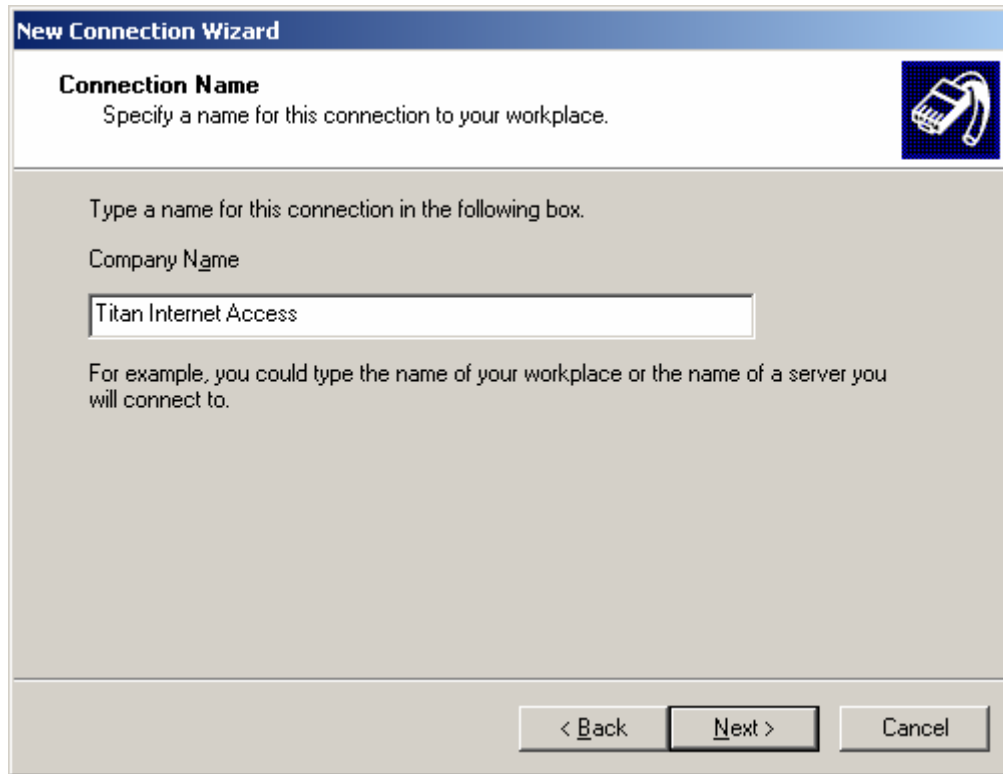
4. Select Connect to the Network at my workplace
5. Click Next



6. Select Dial-up connection
7. Click Next



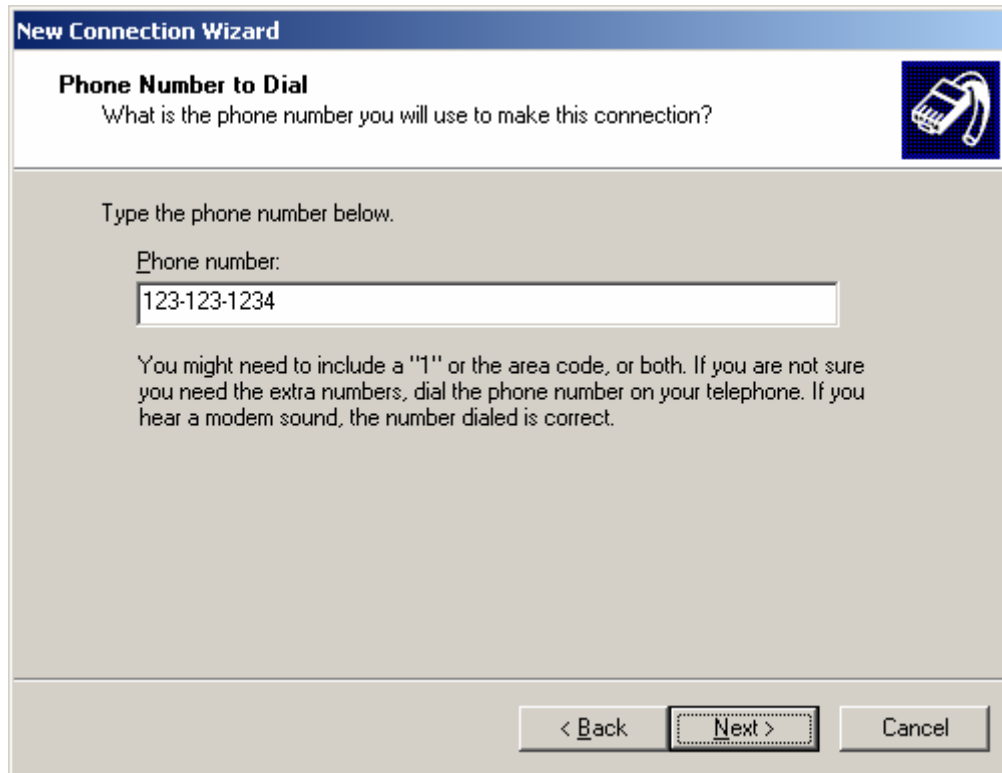
8. Type in a name for the connection example: Titan Internet Access
9. Click Next



Below is a list of Local Phone Numbers, find the one that's close to you and enter the phone number. If the area code is the same as you home number, you do not need to include the area code.

City Location:	Dial-up Phone #	City Location:	Dial-up Phone #
Arlington	(951) 637-1000	Murrieta	(909) 894-0601
Buena Park	(714) 684-1051	Newport Beach	(949) 791-0188
Corona	(951) 531-0103	Pasadena	(626) 737-3040
Cypress	(714) 243-0301	Pico Rivera	(562) 364-9050
El Monte	(626) 279-6300	Pomona-1	(909) 802-2000
El Toro	(949) 830-6500	Pomona-2	(909) 632-1130
Fullerton	(714) 278-1000	Riverside	(951) 530-0610
Gardena	(310) 323-0010	San Bernardino	(951) 663-0244
Long Beach	(562) 366-9250	Santa Ana	(714) 429-9300
Los Alamitos	(562) 252-9050	Upland	(909) 291-0301

10. Enter a number from the above list in the Phone Number field Note: If you're not sure which number is local for you please visit http://www.fullerton.edu/it/services/Email_Remote_Access/faq/localareas.asp
11. Click Next.



New Connection Wizard

Phone Number to Dial
What is the phone number you will use to make this connection?

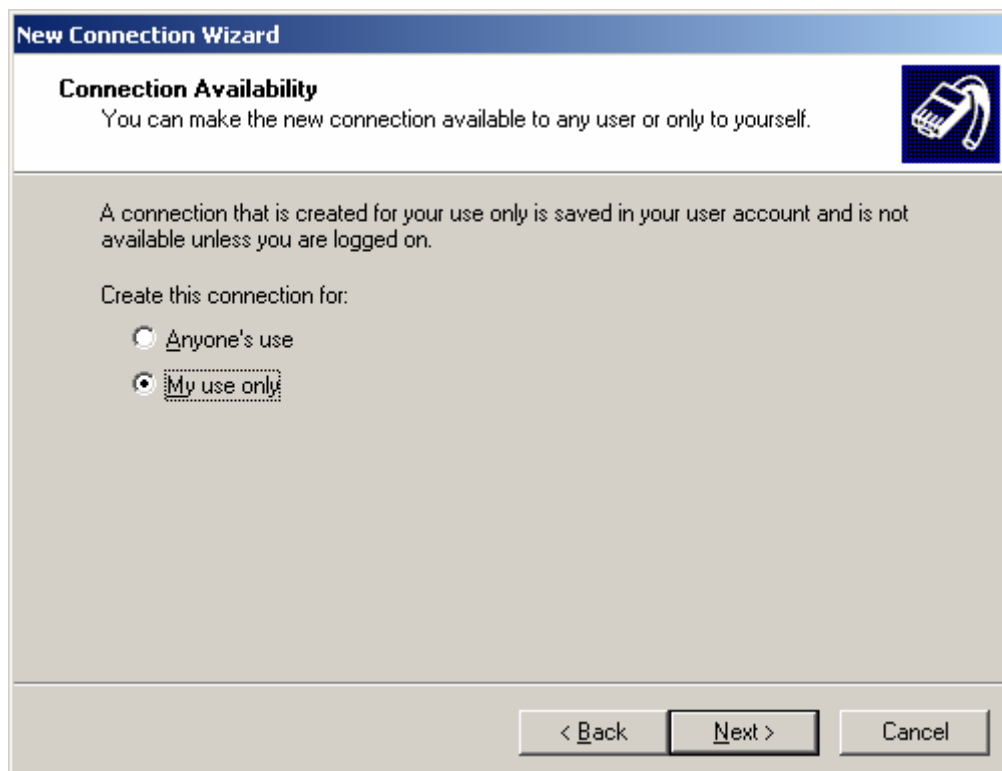
Type the phone number below.

Phone number:
123-123-1234

You might need to include a "1" or the area code, or both. If you are not sure you need the extra numbers, dial the phone number on your telephone. If you hear a modem sound, the number dialed is correct.

< Back Next > Cancel

12. Select My use only (This is a suggestion)
13. Click Next



New Connection Wizard

Connection Availability
You can make the new connection available to any user or only to yourself.

A connection that is created for your use only is saved in your user account and is not available unless you are logged on.

Create this connection for:

Anyone's use

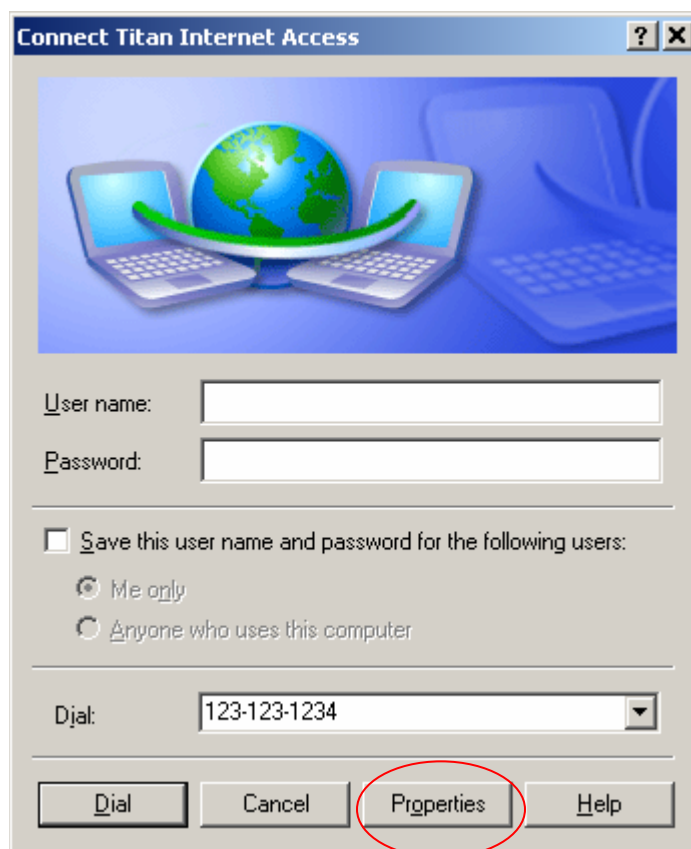
My use only

< Back Next > Cancel

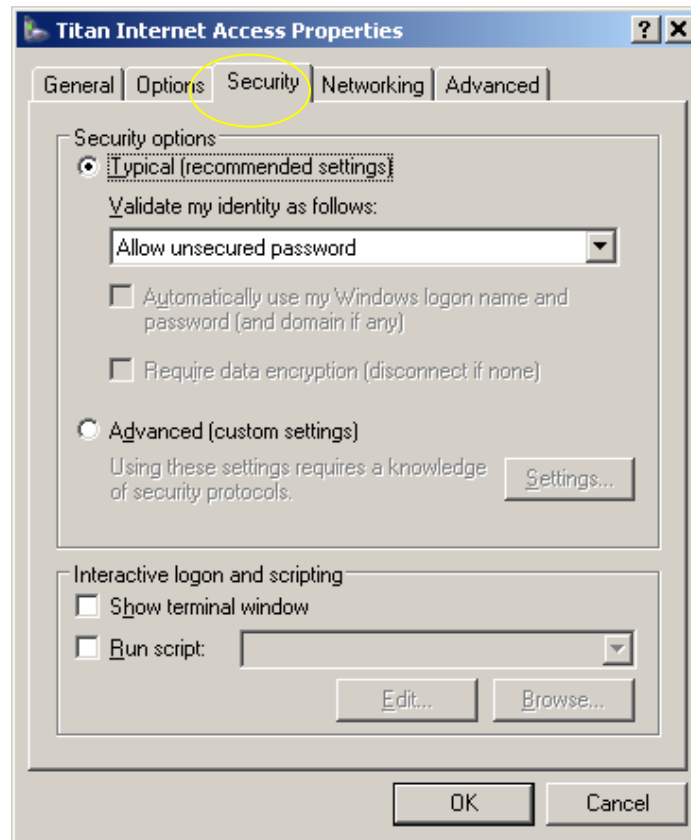
14. Click the check box Add a shortcut to this connection to my desktop (This is optional).
15. Click Finish



16. Note: At this point – The connection has been created, but still needs to be configured to use PAP as the authentication method. Click Properties

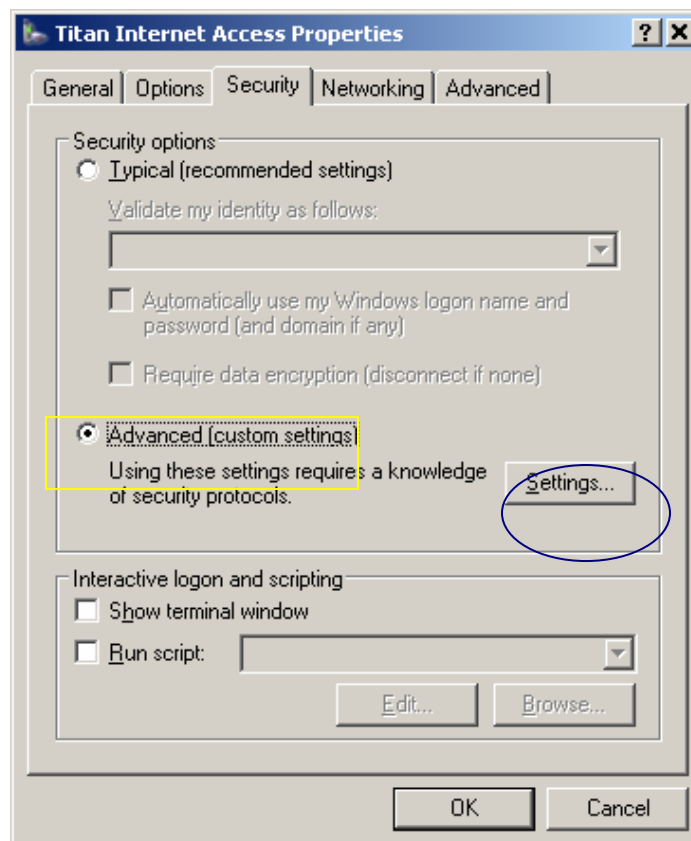


17. Select the Security Tab



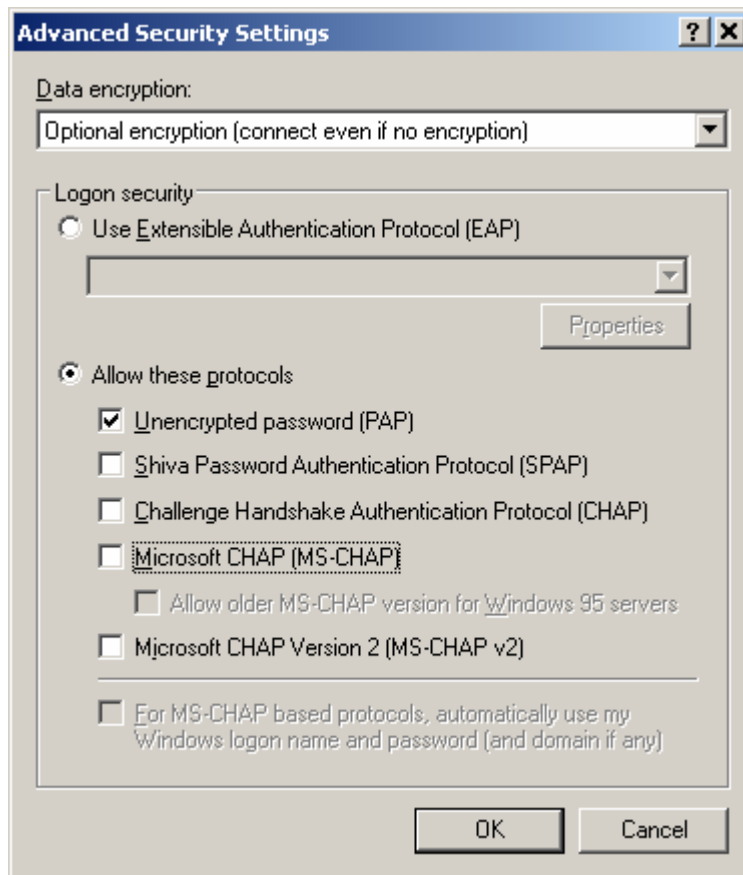
18. Click Advanced (custom settings)

19. Click Settings

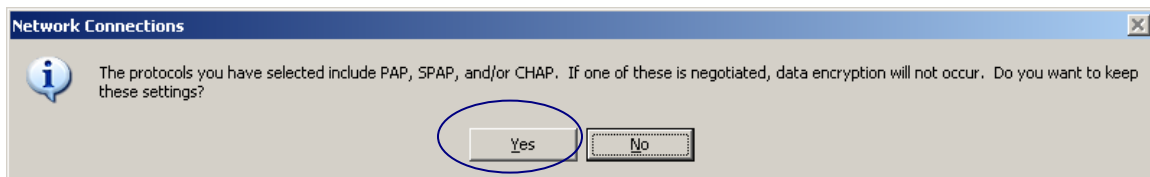


20. Deselect all settings except for Unencrypted password (PAP)

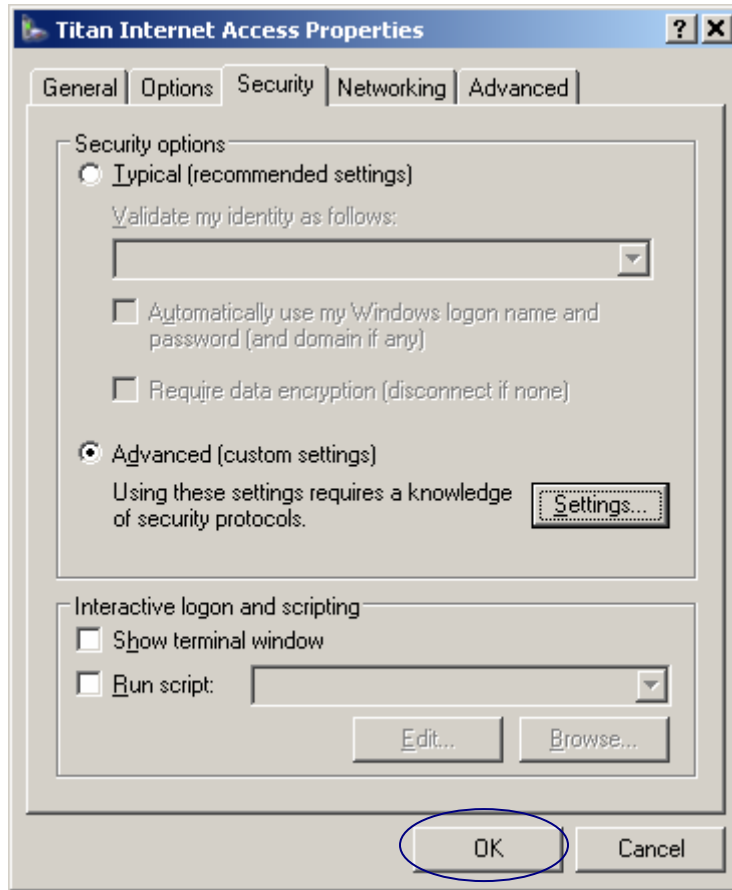
21. Click OK



22. You will receive a message that asks you if you want to keep these settings. Click Yes.



23. Click OK to close the Titan Internet Access Properties window.



24. The connection is now ready for use. You will enter in your username and password and click on Dial.