

Library Docking Stations for Personal Laptop Computers



What are Docking Stations?

Docking stations are access points where you can connect your laptop to the campus network and gain access to Internet resources and Library databases via the Web.

Why should I use the Library's docking stations for my laptop?

By connecting directly to the campus network, your access speed is higher than is possible from home with a Titan Access account. This means that browsing the Web or reading email is faster.

But why not just use the computers which the Library provides?

By "docking" your laptop into the library network, you can use all the software on your own laptop computer, configured exactly the way you like it, combined with higher-speed Internet access.

What's required to participate?

- Your own laptop.
- Your own Ethernet card in your laptop. This can be built-in to the laptop or it can be a PCMCIA card.
- Installing Internet support (TCP/IP networking protocol) on your laptop. See instructions on the following pages.

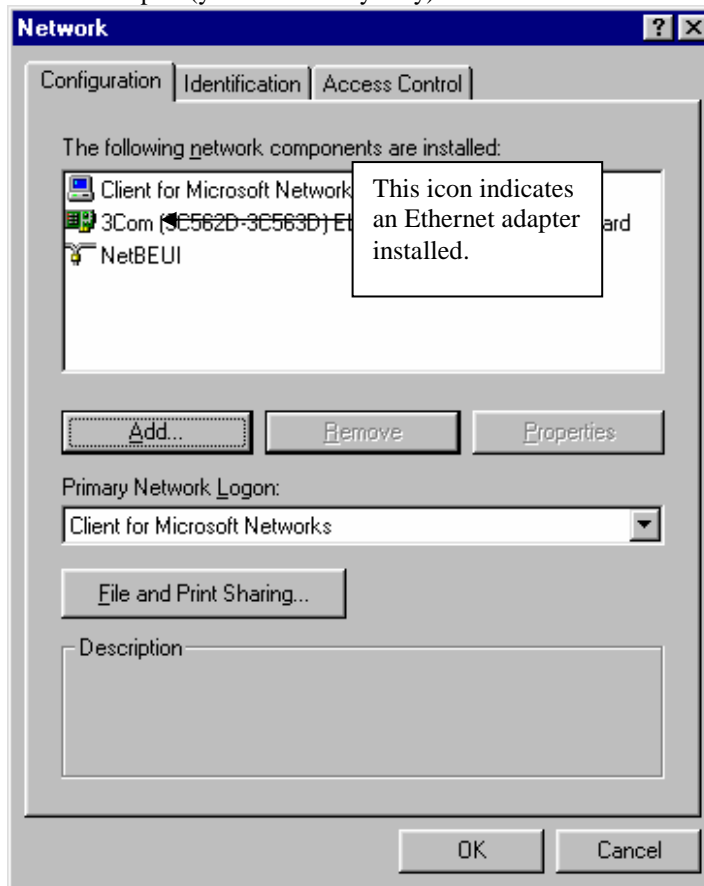


How do I get started?

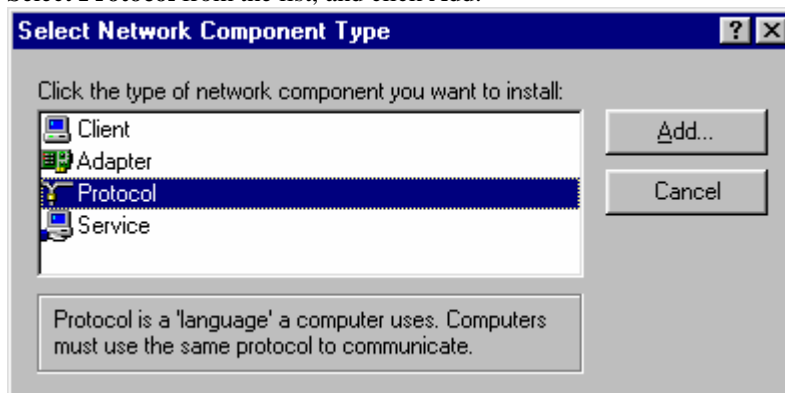
1. Install the software for your laptop's Ethernet card. Refer to your Windows 95 documentation or your Ethernet card documentation. The Library does not provide technical support for installing your Ethernet card, since every laptop and Ethernet card is slightly different.
2. Physically connect your Ethernet card to the Docking port with the "Laptop Docking Cable."
3. Follow the TCP/IP installation instructions on the following pages. These instructions are for Windows 95 only. Windows 98 and Windows NT installation steps are similar.

Instructions for installing TCP/IP support in Windows 95

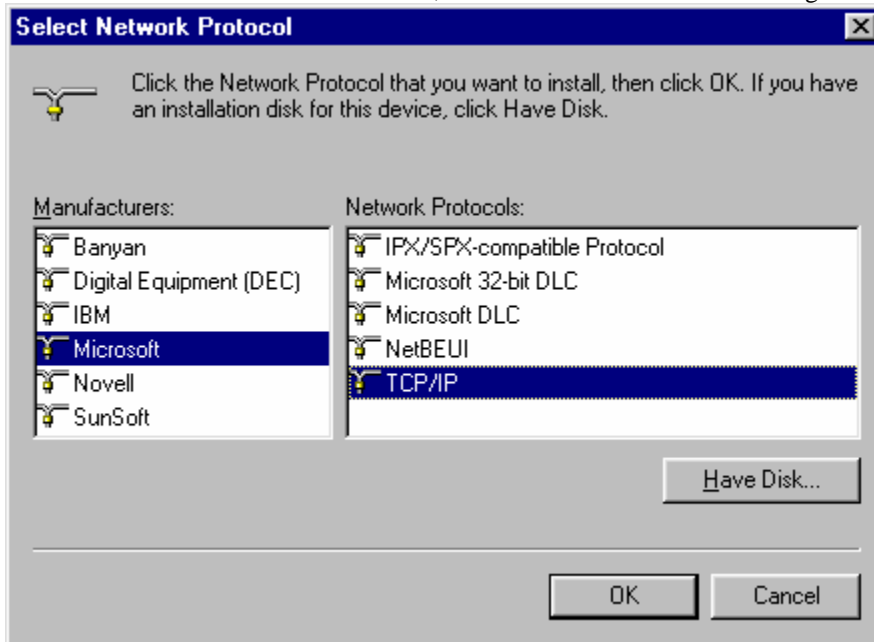
- Go to Start button / Control Panels / Network. You should see a screen that shows your PCMCIA Ethernet adapter (your model may vary). Click the Add button.



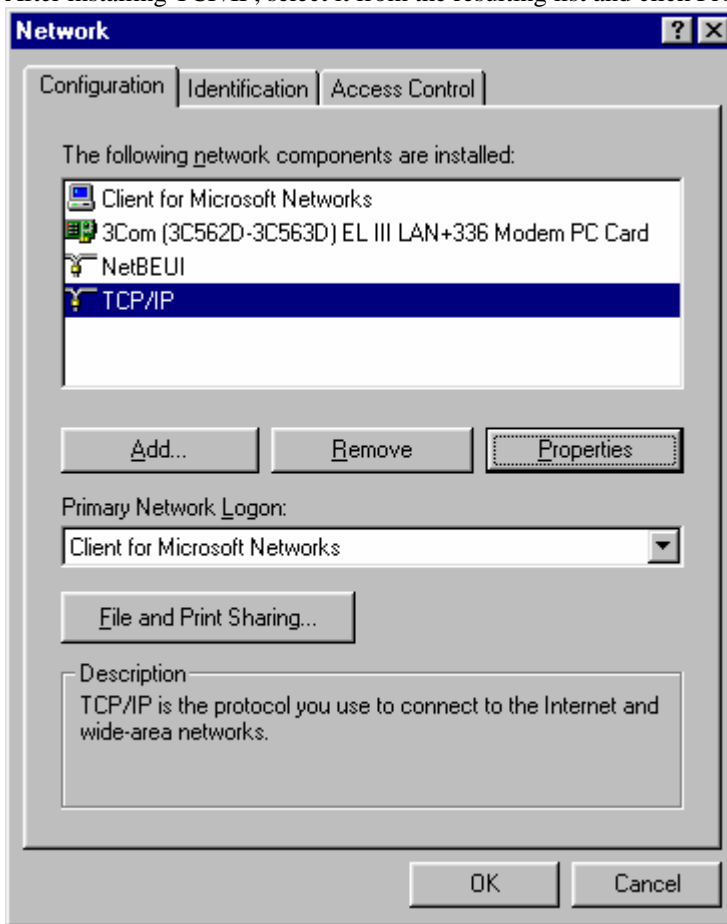
- Select **Protocol** from the list, and click Add.



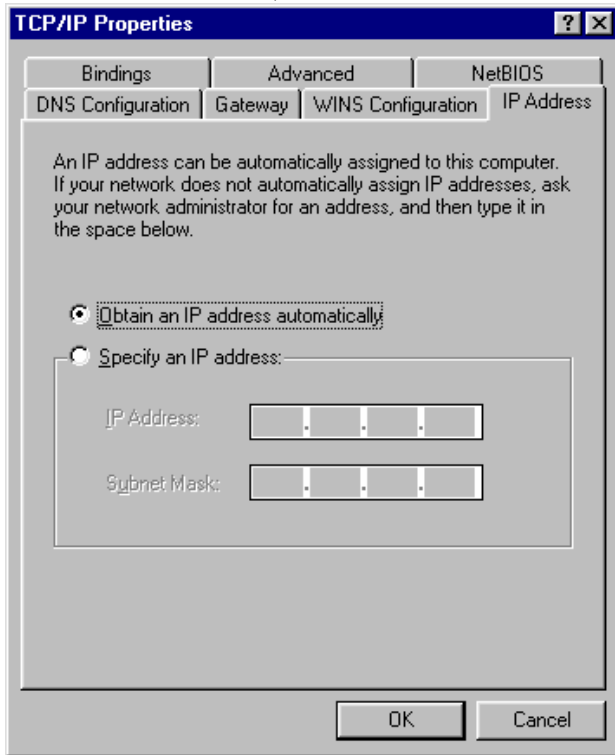
- Select Microsoft from the list on the left, and TCP/IP from the list on the right. Click OK.



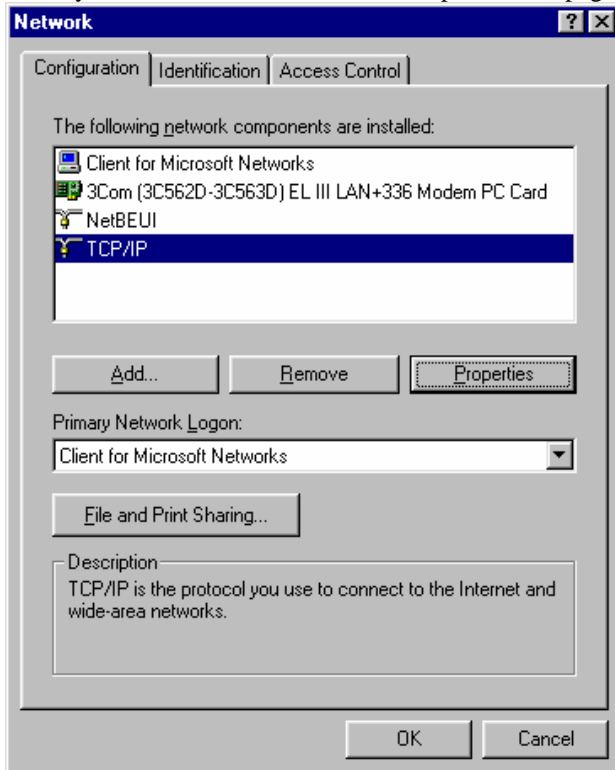
- After installing TCP/IP, select it from the resulting list and click Properties.



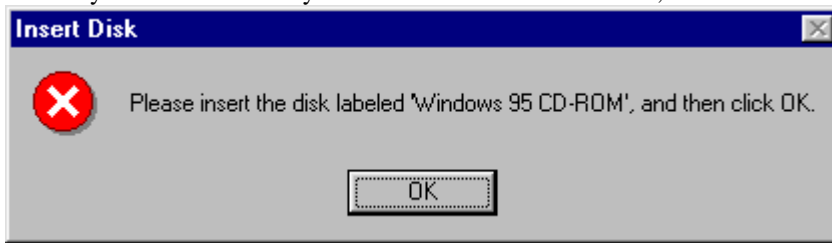
- Select the IP Address tab, and make sure that "Obtain an IP address automatically" is selected.



- When you return to the Network control panel main page, click OK again.



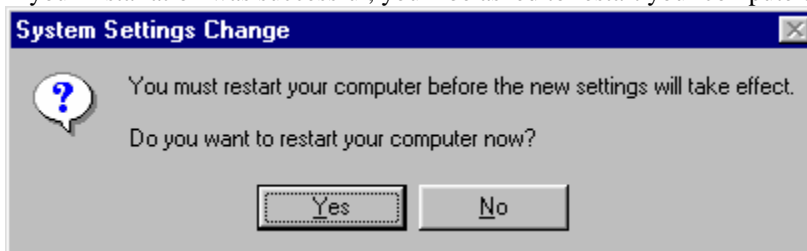
- You may be asked to insert your Windows CD-ROM. Do so, then click OK.



If you don't have a Windows CD-ROM, your Windows installation files may be located on your hard drive. If you are prompted with the screen below, try telling Windows to search in C:\WINDOWS\OPTIONS\CABS.



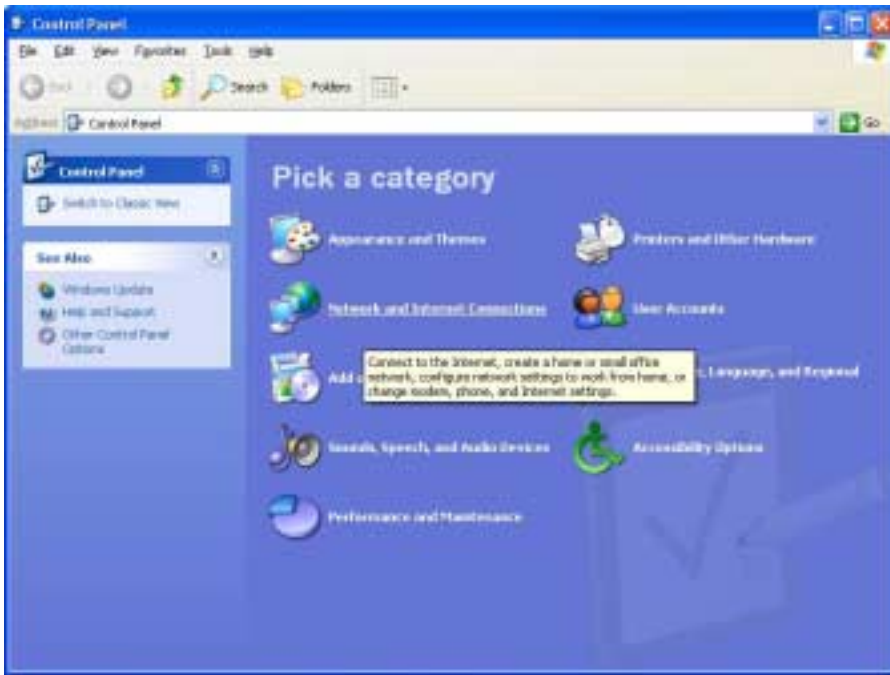
- If your installation was successful, you'll be asked to restart your computer. Select Yes.



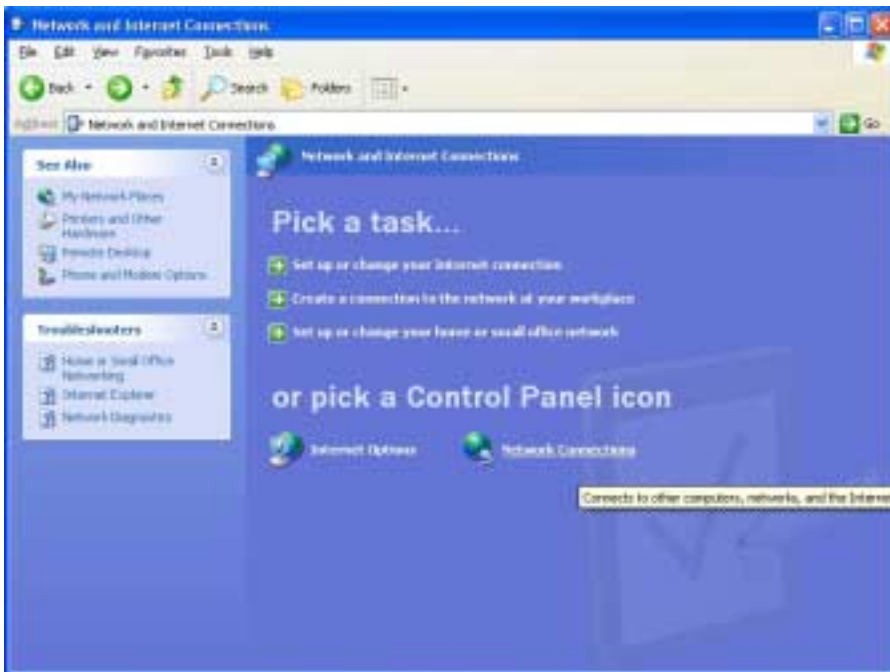
- Once you have rebooted the computer, you may need to and adjust settings to (select) LAN instead of modem.

Instructions for Windows XP:

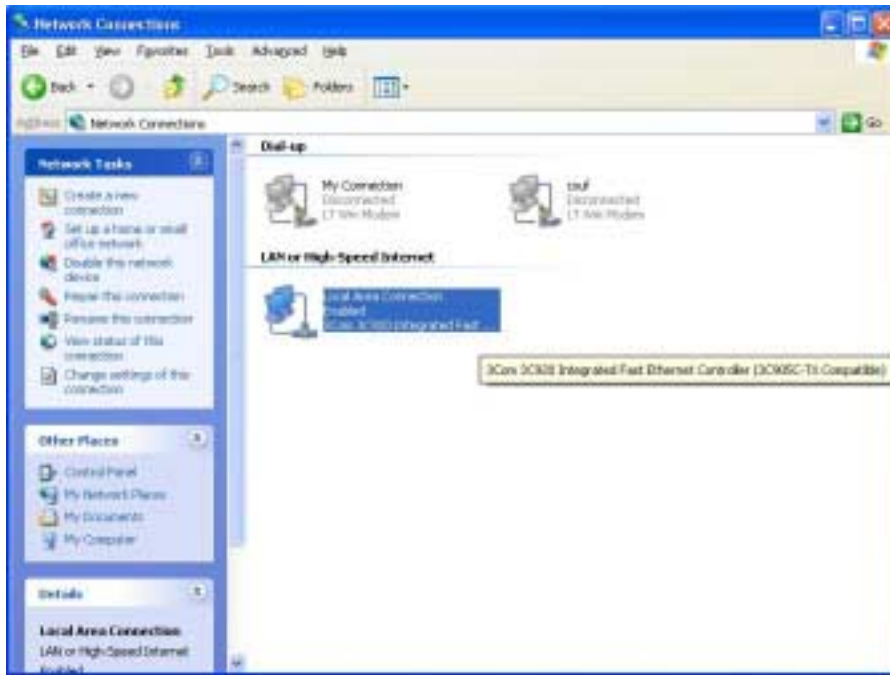
Click Start... Control Panel... and click Network and Internet Connections



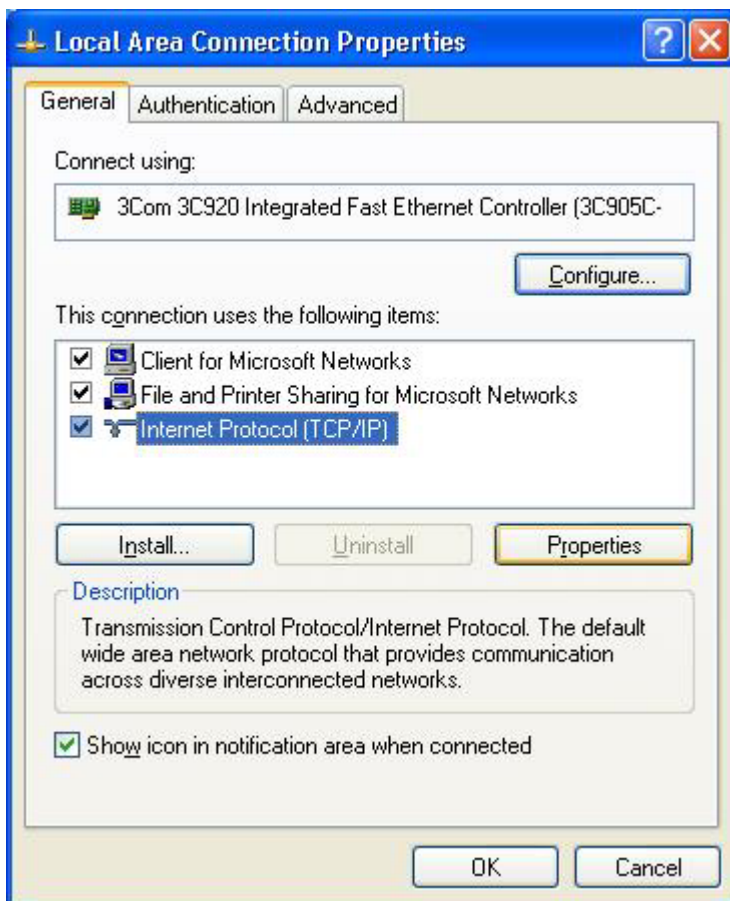
Click Network Connections



Right click your LAN connection and select Properties



Click Internet Protocol (TCP/IP) and click properties



Make sure that “Obtain an IP address automatically” is selected.

