

# CALIFORNIA STATE UNIVERSITY FULLERTON

## INFORMATION TECHNOLOGY

### New or modifying an existing dial-up connection to use CHAP Authentication on a Macintosh

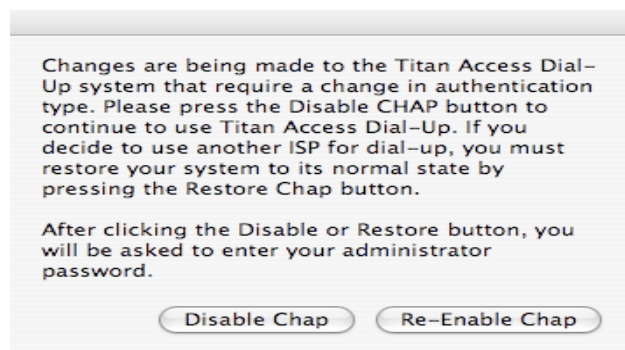
1. First make sure that you have this file on your Desktop and then double click on it. If you do not have this file, go to this [website to download it](#).



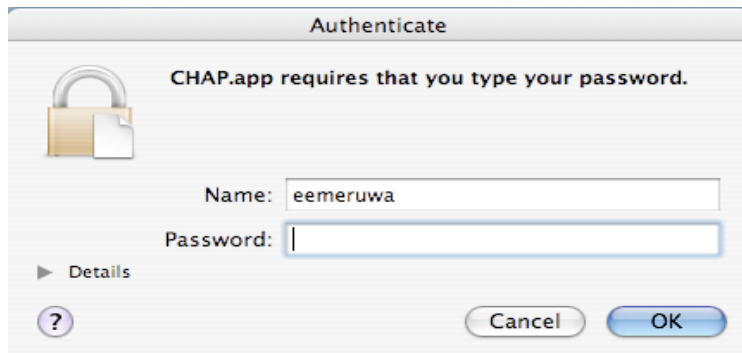
2. It will open a window similar to the one below. Double click on “CHAP” icon.



3. Click the “Disable Chap” button



4. Enter your local administrator username and password and the script will confirm that it has disabled chap program.



5. Chap successfully disabled. Click the "OK" button to close the window.



6. To bring up the dialup screen, click "Go" on the menu, select "Applications", then "Internet Connect" and the screen shot below will appear. Enter your email username and password. (If necessary, enter the phone number. For a list of local numbers, check this website:

[http://www.fullerton.edu/it/services/Email\\_Remote\\_Access/faq/localareas.asp](http://www.fullerton.edu/it/services/Email_Remote_Access/faq/localareas.asp))

