

CSUF

Theatre and Dance  
COLLEGE OF THE ARTS





**The Cal State Fullerton (CSUF) Department of Theatre and Dance**

is situated in the heart of Southern California with close proximity to the film and television industries of Los Angeles and the performing arts communities and theme park industry of Orange County.

As a department, we are committed to providing students with real-world training through hands-on curriculum. Our professional faculty and staff are dedicated to preparing students for all facets of the theatre industry and academia.

Presenting theatre in front of a live audience is central to the educational mission of our program. Students participate in every aspect of our productions from design, performance, and stage management to production, direction, and dramaturgy.

In the areas of performance, design, and technical production, high impact practices encourage life-long learning habits, collaborative skills, and team dynamics that ready students for future success. At CSUF, the stage is a classroom and our performances a testament to the hard work and skill of our students.

Driven by a passion for the stage, we strive to create a student-centered educational environment that builds upon the artistic skills of students while preparing them to adapt, innovate, and respond to the everchanging professional performing arts environment.

We look forward to you joining the CSUF Department of Theatre and Dance community.


**OUTSTANDING FACULTY**, nationally and internationally recognized, maintain vibrant performing and teaching careers, engage in ground breaking research, and are well-known in the professional fields of Theatre, Dance, Opera, Television, Film, and Theme Parks.

**LOW-COST TUITION** with the benefits of typical private education.  
California residents pay just \$3,539.17 per semester for full-time undergraduate tuition.




**DISTINCTIVE OPPORTUNITIES**, including on-campus performances  
in 4 different types of venues





**INDIVIDUAL ATTENTION** from faculty who take pride in developing their students' academic and artistic skills within a nurturing yet educationally rigorous atmosphere. Students receive one-on-one mentoring for projects within the department. Theatre and Dance classes rarely exceed 25 students.



**LOCATION** The Department of Theatre and Dance at Cal State Fullerton is less than 30 miles outside of Los Angeles, near Southern California's entertainment and recreation destinations.

**BA Theatre** (120 units) is a liberal arts degree in theatre, which allows students to learn a breadth of theatre knowledge. The core curriculum of this degree includes theatre studies, theatre history, performance, design/tech, and directing.  
*\*This degree does not require an audition*

**BA Theatre with a Directing Concentration** (120 units) follows the same core course work as the BA in Theatre but has an additional 3 directing classes as part of the degree curriculum. *\*This degree does not require an audition*

**Note:** The Department of Theatre and Dance projects to offer a Teaching Credential in Theatre in Fall 2025. The BA Theatre degree is a nice bridge to the post baccalaureate Teaching Credential.

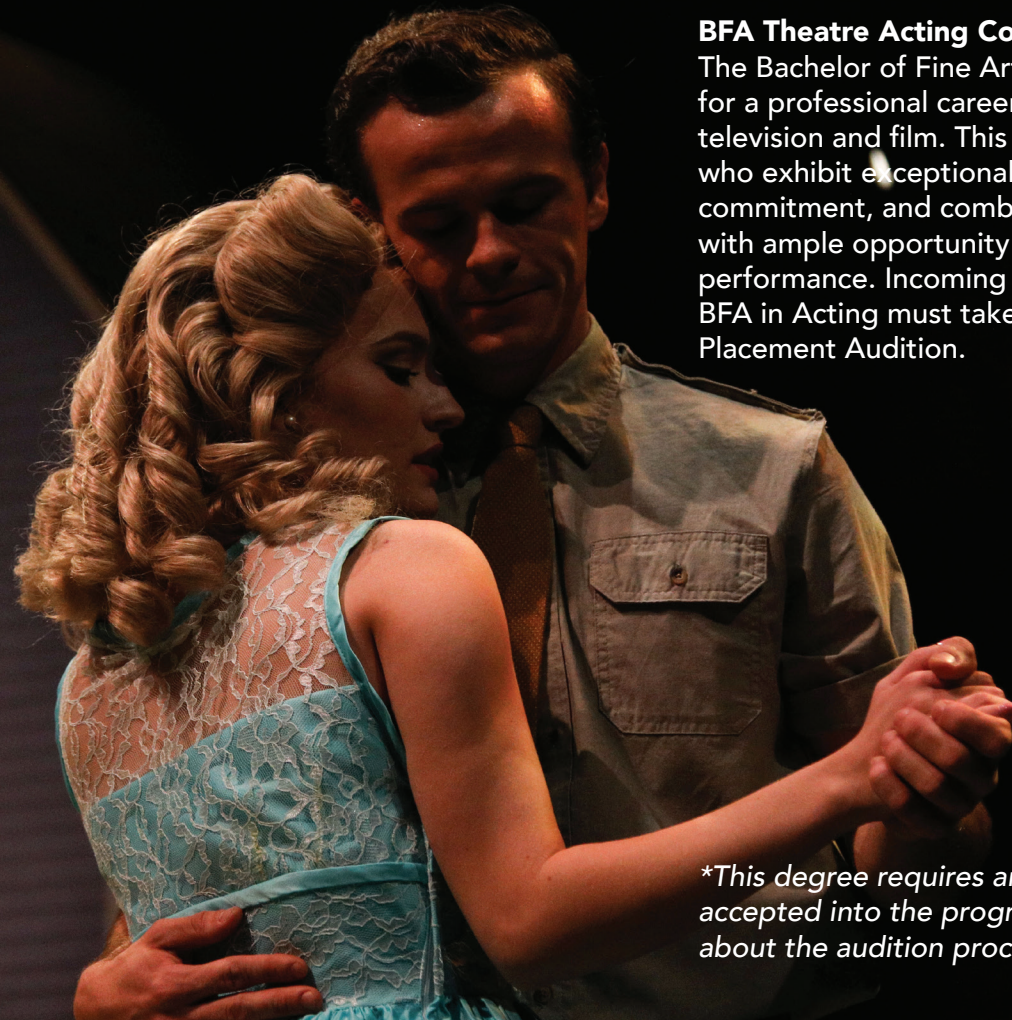


**BA Specialized Study in Theatre concentration, Design/Technical Production Emphasis** (120 units) is a degree that focuses on each area of design so that students can receive a strong foundation in design and technical theatre. *\*This degree does not require an audition*



**Note:** The department hopes to offer a BFA in Design/Technical Production starting FA 2025. This degree would require a portfolio review and interview.)

**BFA Theatre Acting Concentration** (132 units)  
The Bachelor of Fine Arts in Acting prepares students for a professional career in theatre both in plays and television and film. This concentration seeks students who exhibit exceptional talent, motivation and commitment, and combines rigorous coursework with ample opportunity to apply the training in performance. Incoming students interested in a BFA in Acting must take part in a New Student Placement Audition.



*\*This degree requires an audition before being accepted into the program. For more information about the audition process go [here](#).*

**BFA Theatre Musical Theatre Concentration** (132 units)

This degree is for students who desire a professionally oriented education and training in musical theatre.

This concentration seeks students who exhibit exceptional talent, motivation and commitment.

*\*This degree requires an audition before being accepted into the program.*

*For more information about the audition process go [here](#).*



**BFA Theatre Devised Theatre/Physical Performance** (132 units)

The Devised Performance/Physical Theatre concentration develops collaborative theatre artists who conceive, design, direct and perform highly athletic, visually stunning, interdisciplinary projects that shape today's evolving theatrical landscape.

*\*This degree requires an audition before being accepted into the program.*

*For more information about the audition process go [here](#).*



