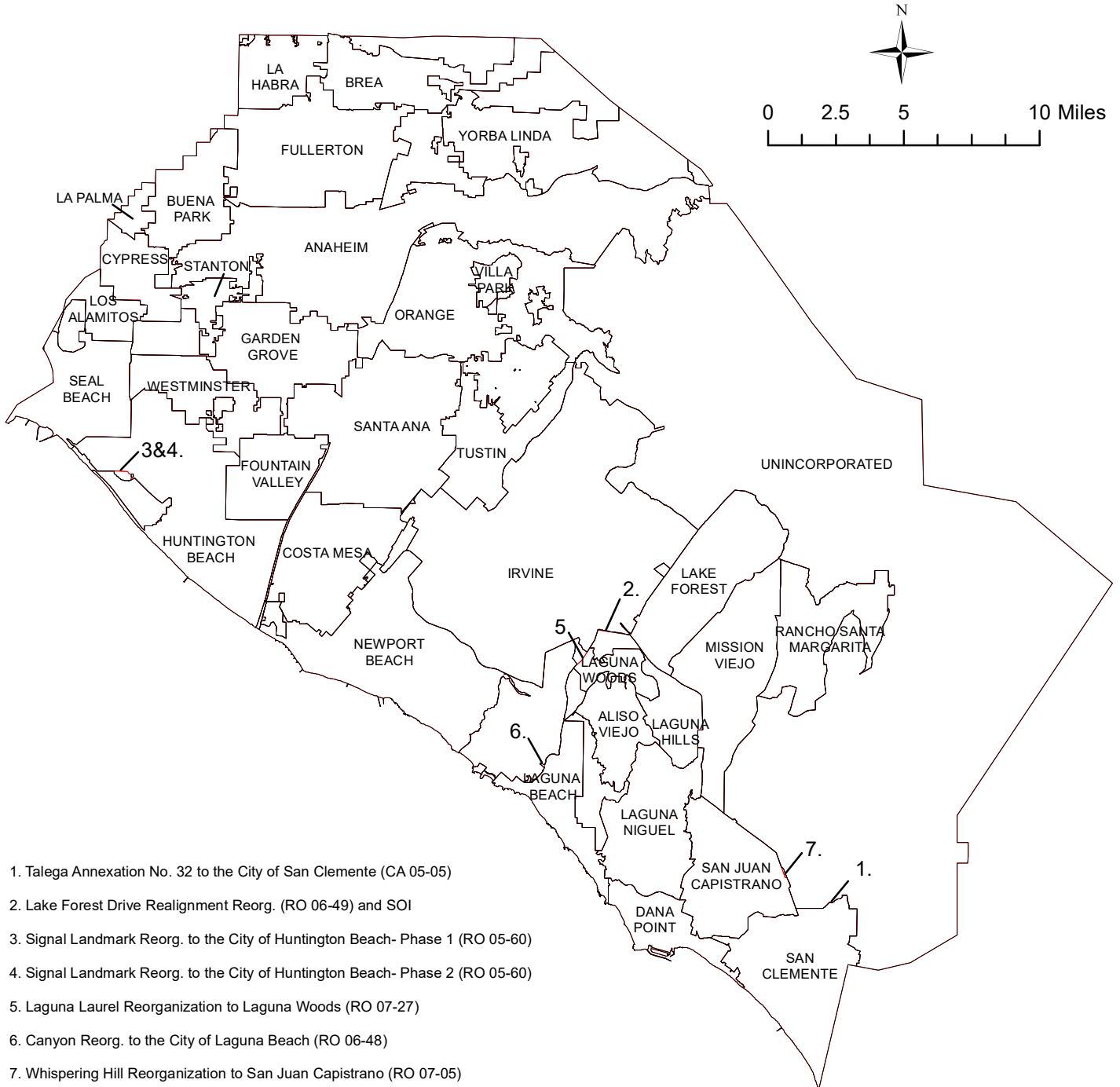


Orange County Boundary and Annexation Report 2008-2009 (January 1)



1. Talega Annexation No. 32 to the City of San Clemente (CA 05-05)
2. Lake Forest Drive Realignment Reorg. (RO 06-49) and SOI
3. Signal Landmark Reorg. to the City of Huntington Beach- Phase 1 (RO 05-60)
4. Signal Landmark Reorg. to the City of Huntington Beach- Phase 2 (RO 05-60)
5. Laguna Laurel Reorganization to Laguna Woods (RO 07-27)
6. Canyon Reorg. to the City of Laguna Beach (RO 06-48)
7. Whispering Hill Reorganization to San Juan Capistrano (RO 07-05)

	January 1, 2009 Jurisdictions
	January 1, 2008 Jurisdictions

Source: OC Geomatics, 2008 & 2009
 Note: Coastal boundary represents mean high tide circa 2015. Coastal boundary approximated by CDR GIS staff.

Orange County Boundary and Annexation Report 2008-2009

Jurisdiction	Total Area (Square Miles)*		Area Change 2008-2009**	Annexation Reference #
	January 1, 2008	January 1, 2009		
Aliso Viejo	6.921	6.921	0	
Anaheim	50.872	50.872	0	
Brea	12.221	12.221	0	
Buena Park	10.550	10.550	0	
Costa Mesa	15.827	15.827	0	
Cypress	6.622	6.622	0	
Dana Point	6.604	6.604	0	
Fountain Valley	9.048	9.048	0	
Fullerton	22.447	22.447	0	
Garden Grove	17.923	17.923	0	
Huntington Beach	27.376	27.402	0.0265	3,4
Irvine	65.976	65.969	-0.0065	2
Laguna Beach	8.919	8.932	0.0133	6
Laguna Hills	6.641	6.647	0.0065	2
Laguna Niguel	14.787	14.787	0	
Laguna Woods	3.038	3.306	0.2680	5
La Habra	7.360	7.360	0	
Lake Forest	16.785	16.785	0	
La Palma	1.804	1.804	0	
Los Alamitos	4.089	4.089	0	
Mission Viejo	17.933	17.933	0	
Newport Beach	25.984	25.984	0	
Orange	25.783	25.783	0	
Placentia	6.621	6.621	0	
Rancho Santa Margarita	12.937	12.937	0	
San Clemente	18.355	18.357	0.0018	1
San Juan Capistrano	14.177	14.199	0.0227	7
Santa Ana	27.352	27.352	0	
Seal Beach	11.991	11.991	0	
Stanton	3.087	3.087	0	
Tustin	11.137	11.137	0	
Villa Park	2.078	2.078	0	
Westminster	10.070	10.070	0	
Yorba Linda	19.867	19.867	0	
Unincorporated	276.737	276.404	-0.3323	1,3,4,5,6,7
Orange County	799.920	799.920	0	

Source: O.C. Geomatics, 2008 & 2009

*Area calculated in ArcGIS by CDR.

**Annual area change totals may not match detailed annexation information due to rounding.

Detailed Annexation List:

- 1) Talega Annexation No. 32 to the City of San Clemente (CA 05-05)
Effective: 2/1/2008
From Unincorporated Orange County to San Clemente
Uninhabited
1.157 acres (0.00180 sq. miles)

- 2) Lake Forest Drive Realignment Reorg. (RO 06-49) and SOI
Effective: 2/14/2008
From Irvine to Laguna Hills
Uninhabited
4.18 acres (0.00653 sq. miles)

- 3) Signal Landmark Reorg to City of Huntington Beach- Phase 1 (RO 05-60)
Effective: 2/21/2008
From Unincorporated to Huntington Beach
Uninhabited
3.5 acres (0.0054 sq. miles)

- 4) Signal Landmark Reorg.to the City of Huntington Beach (RO 05-60) Phase 2
Effective: 3/4/2008
From Unincorporated Orange County to Huntington Beach
Uninhabited
13.527 acres (0.0211 sq. miles)

- 5) Lagunal Laurel Reorg. to the City of Laguna Woods (RO 07-27)
Effective: 5/9/2008
From Unincorporated Orange County to Laguna Woods
Uninhabited
171.553 acres (0.268 sq. miles)

Additional annexations listed on next page.

Notes:

Benchmark 2015.

Some jurisdictions' legal boundary extends three miles off the coast.

A fixed boundary line at the coast was created in November 2014 based on high-resolution county-wide aerial imagery that was captured on June 19, 2013, to approximate the ocean waterline and to eliminate artificial land area changes to jurisdictions adjacent to the Orange County coast. This coast line does not define any vertical datum such as mean high tide, mean sea level, or mean lower low tide. This reference line was developed through a collaboration of OC Public Works, OC LAFCO, and CDR; it has no legal value; and its purpose is for CDR's use in reporting population density and jurisdictional annexations.

For official legal boundaries, contact the County of Orange Surveyor's office
<http://ocpublicworks.com/survey/>

Orange County Boundary and Annexation Report 2008-2009

Detailed Annexation List (Continued):

- 6) Canyon Reorg. to the City of Laguna Beach (RO 06-48)
Effective: 6/6/2008
From Unincorporated Orange County to Laguna Beach
Uninhabited
8.520 acres (0.0133 sq. miles)
- 7) Whispering Hill II Reorg. to the City of San Juan Capistrano (RO 07-05)
Effective: 9/15/2008
From Unincorporated Orange County to San Juan Capistrano
Uninhabited
14.51 acres (0.0227 sq. miles)

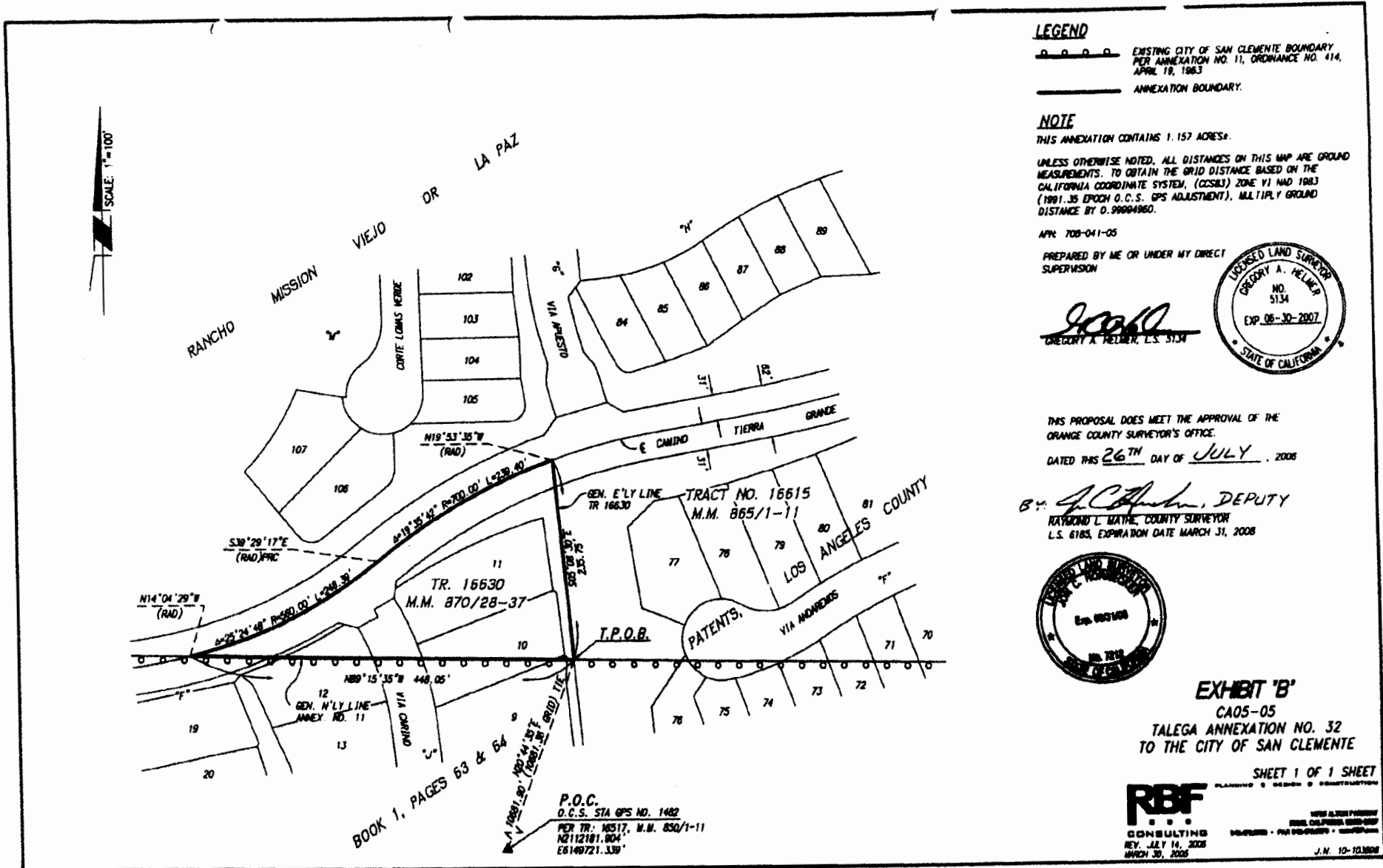
Notes:

Benchmark 2015.

Some jurisdictions' legal boundary extends three miles off the coast.

A fixed boundary line at the coast was created in November 2014 based on high-resolution county-wide aerial imagery that was captured on June 19, 2013, to approximate the ocean waterline and to eliminate artificial land area changes to jurisdictions adjacent to the Orange County coast. This coast line does not define any vertical datum such as mean high tide, mean sea level, or mean lower low tide. This reference line was developed through a collaboration of OC Public Works, OC LAFCO, and CDR; it has no legal value; and its purpose is for CDR's use in reporting population density and jurisdictional annexations.

For official legal boundaries, contact the County of Orange Surveyor's office <http://ocpublicworks.com/survey/>



LEGEND

- EXISTING CITY OF SAN CLEMENTE BOUNDARY PER ANNEXATION NO. 11, ORDINANCE NO. 414, APRIL 18, 1983
- ANNEXATION BOUNDARY.

NOTE

THIS ANNEXATION CONTAINS 1.157 ACRES.

UNLESS OTHERWISE NOTED, ALL DISTANCES ON THIS MAP ARE GROUND MEASUREMENTS. TO OBTAIN THE GRID DISTANCE BASED ON THE CALIFORNIA COORDINATE SYSTEM, (CCS83) ZONE VI MAD 1983 (1981.35 EPOCH O.C.S. GPS ADJUSTMENT), MULTIPLY GROUND DISTANCE BY 0.99994960.

APR. 708-041-05

PREPARED BY ME OR UNDER MY DIRECT SUPERVISION

Gregory A. Helmer
 GREGORY A. HELMER, L.S. 5134



THIS PROPOSAL DOES MEET THE APPROVAL OF THE ORANGE COUNTY SURVEYOR'S OFFICE.

DATED THIS 26TH DAY OF JULY, 2008

By: *Raymond L. Mathe*, DEPUTY
 RAYMOND L. MATHE, COUNTY SURVEYOR
 L.S. 6185, EXPIRATION DATE MARCH 31, 2008



EXHIBIT 'B'
 CA05-05
 TALEGA ANNEXATION NO. 32
 TO THE CITY OF SAN CLEMENTE

SHEET 1 OF 1 SHEET



PLANNING • DESIGN • CONSTRUCTION
 1000 ALTON PARKWAY
 SAN CLEMENTE, CALIFORNIA 92673-0001
 TELEPHONE • 949-426-0000 • FAX 949-426-0001
 WWW.RBFCONSULTING.COM
 J.N. 10-12-2008

VICINITY MAP

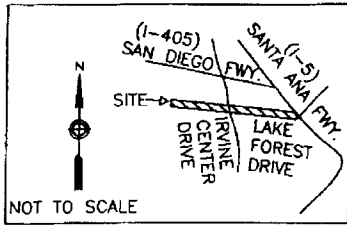
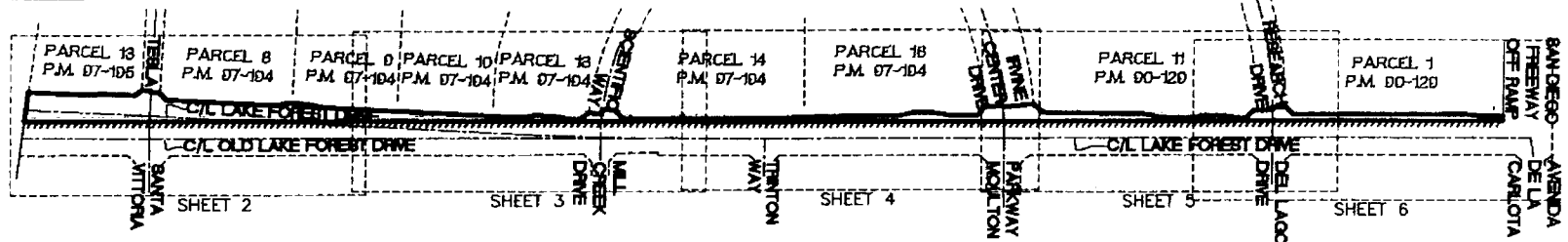


EXHIBIT "B"
REORGANIZATION RO 06-49

RANCHO SAN JOAQUIN RECORDED
ON OCTOBER 20, 1870 IN BOOK
1, PAGE 147-149 OF PATENTS,
RECORDS OF LOS ANGELES COUNTY

CITY OF IRVINE



CITY OF LAGUNA HILLS

COUNTY SURVEYOR'S STATEMENT

THIS ANNEXATION BOUNDARY IS TECHNICALLY CORRECT WITH RESPECT TO THE APPLICATION AND REQUIRED FORMAT; THE LEGAL DESCRIPTION AND PLAT ARE DEFINITE AND CERTAIN; AND CAN BE LOCATED ON THE GROUND. PORTIONS OF THE PROPOSED ANNEXATION ARE NOT IN CONFORMANCE WITH LINES OF ASSESSMENT OR OWNERSHIP.

DATED THIS 1ST DAY OF FEB., 2007

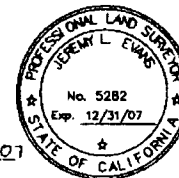
By: *[Signature]* DEPUTY

RAYMOND L. MATHE, COUNTY SURVEYOR,
L.S.6185, EXPIRES 3/31/08

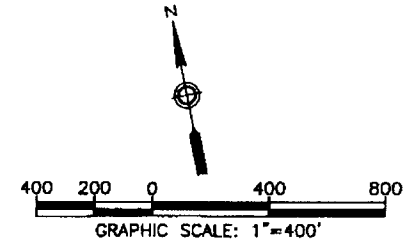


THIS PROPOSAL WAS PREPARED BY ME OR UNDER MY DIRECT SUPERVISION

[Signature]
JEREMY L. EVANS, PLS 5282
LICENSE EXPIRES 12/31/07



1-17-07
DATE



LEGEND

- EXISTING BOUNDARY
- ANNEX. BOUNDARY
- STREET CENTERLINE
- REFERENCE LINES
- APN ASSESSOR PARCEL NUMBER

DESIGNED	K. HOLTZ
DRAFTED	C.M. KOW
CHECKED	J. EVANS

PSOMAS

3187 Red Hill Avenue
Suite 250
Costa Mesa, CA 92626
(714) 751-7373 Fax (714) 545-8983

**DETACHMENT FROM
CITY OF IRVINE AND ANNEXATION
TO CITY OF LAGUNA HILLS**

DATE:	DECEMBER 2006	SHEET	
SCALE:	1" = 400'		1
JOB NO.	21RV130200	OF	6

LINE TABLE

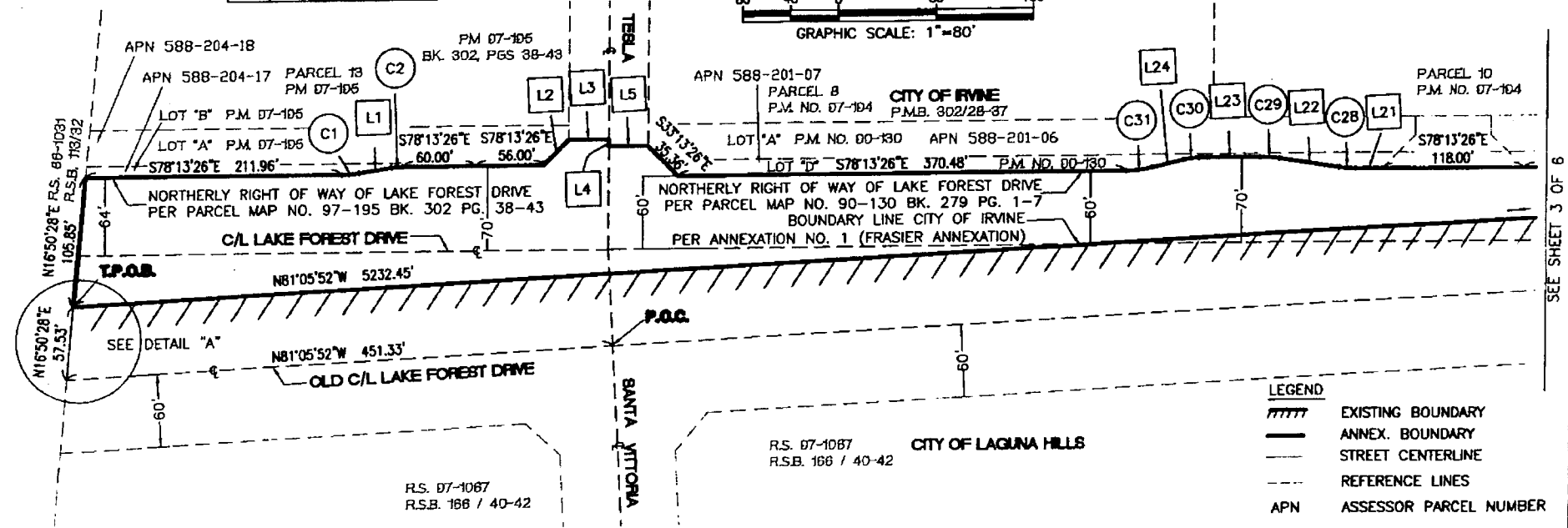
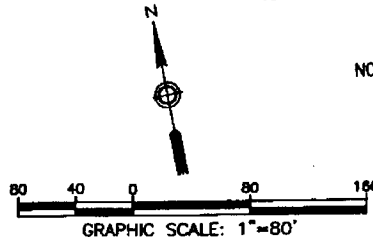
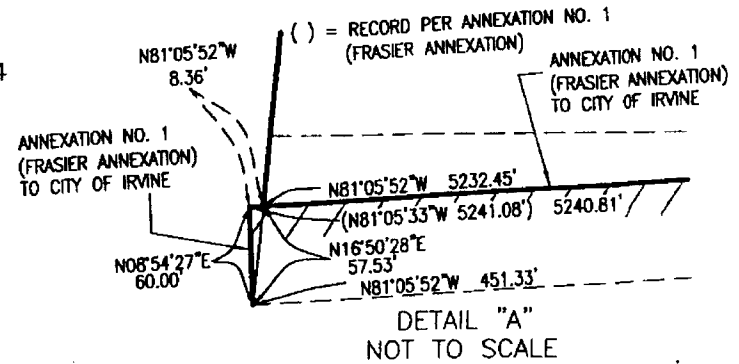
No.	Bearing	Distance
L1	S87°07'13"E	27.13'
L2	N56°46'33"E	29.70'
L3	S78°13'26"E	33.00'
L4	S11°46'34"W	6.00'

No.	Bearing	Distance
L5	S78°13'26"E	32.83'
L21	S78°13'26"E	23.00'
L22	S69°25'35"E	50.00'
L23	S78°13'26"E	50.00'
L24	N88°34'50"E	26.46'

EXHIBIT "B"
REORGANIZATION RO 06-94

CURVE TABLE

No.	Radius	Delta	Length
C1	92.00'	08°53'47"	14.29'
C2	58.00'	08°53'47"	9.01'
C28	92.00'	08°47'51"	14.13'
C29	108.00'	08°47'51"	16.58'
C30	58.00'	13°11'44"	13.36'
C31	92.00'	13°11'44"	21.19'



LEGEND

	EXISTING BOUNDARY
	ANNEX. BOUNDARY
	STREET CENTERLINE
	REFERENCE LINES
APN	ASSESSOR PARCEL NUMBER

DESIGNED
K. HOLTZ
DRAFTED
C.M. KOW
CHECKED
J. EVANS

PSOMAS

3187 Red Hill Avenue
Suite 250
Costa Mesa, CA 92626
(714) 751-3373 Fax (714) 545-8883

DETACHMENT FROM
CITY OF IRVINE AND ANNEXATION
TO CITY OF LAGUNA HILLS

DATE:	SHEET
DECEMBER 2006	
SCALE: 1"=80'	2
JOB NO. 21RV130200	OF 6

LINE TABLE

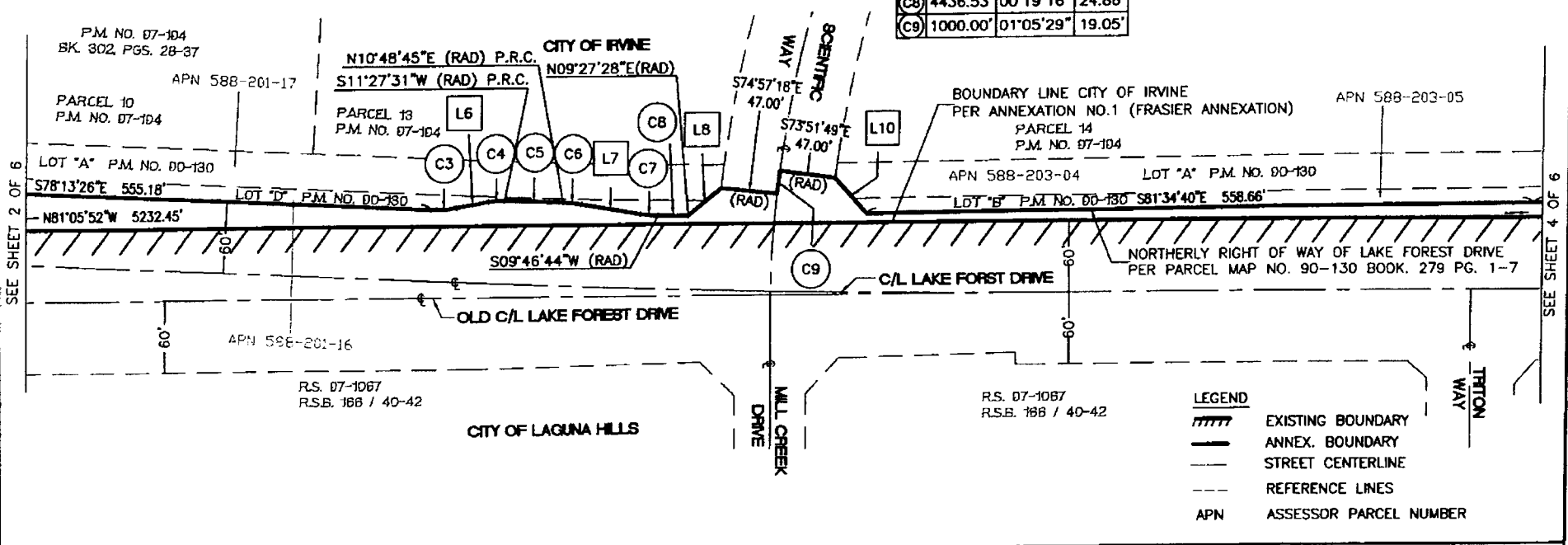
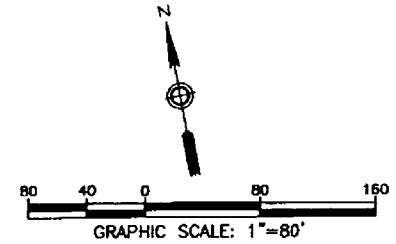
No.	Bearing	Distance
L6	N88°34'12"E	26.71'
L7	S70°54'50"E	50.12'
L8	N58°18'11"E	35.56'
L10	S32°43'29"E	40.66'

EXHIBIT "B"

REORGANIZATION RO. 06-49

CURVE TABLE

No.	Radius	Delta	Length
C3	92.00'	13°12'22"	21.21'
C4	58.00'	12°53'19"	13.05'
C5	4426.53'	00°38'46"	49.92'
C6	108.00'	08°16'25"	15.60'
C7	92.00'	09°18'26"	14.94'
C8	4436.53'	00°19'16"	24.86'
C9	1000.00'	01°05'29"	19.05'



DESIGNED
K. HOLTZ
DRAFTED
C.M. KOW
CHECKED
J. EVANS

PSOMAS

3187 Red Hill Avenue
Suite 250
Costa Mesa, CA 92626
(714) 751-7373 Fax (714) 545-8883

**DETACHMENT FROM
CITY OF IRVINE AND ANNEXATION
TO CITY OF LAGUNA HILLS**

DATE: DECEMBER 2006	SHEET
SCALE: 1"=80'	3
JOB NO. 21RV130200	OF 6

EXHIBIT "B"

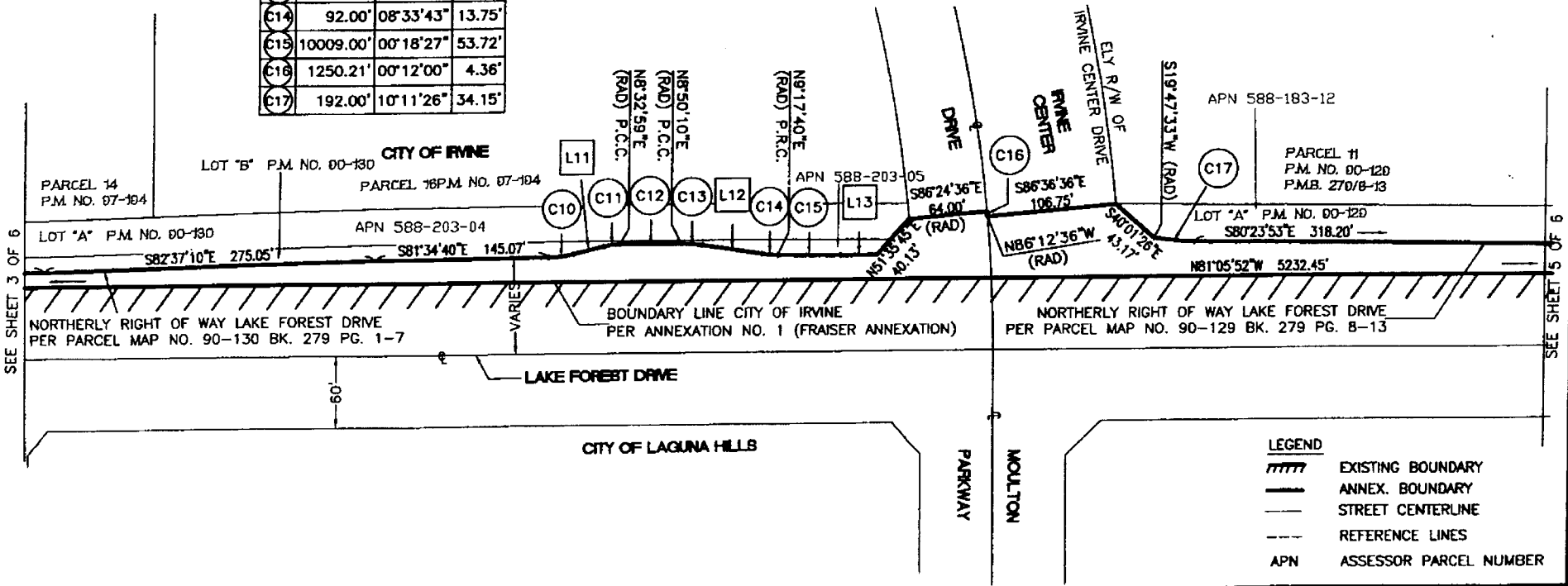
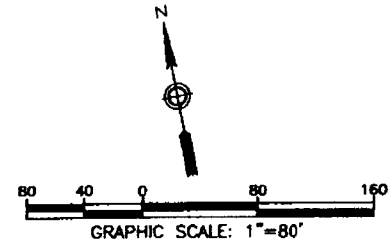
REORGANIZATION RO. 06-49

LINE TABLE

No.	Bearing	Distance
L11	N85°12'35"E	26.27'
L12	S72°08'37"E	50.07'
L13	S80°23'53"E	30.54'

CURVE TABLE

No.	Radius	Delta	Length
C10	92.00'	13°12'45"	21.22'
C11	58.00'	13°20'24"	13.50'
C12	10019.00'	00°17'11"	50.08'
C13	108.00'	09°01'13"	17.00'
C14	92.00'	08°33'43"	13.75'
C15	10009.00'	00°18'27"	53.72'
C16	1250.21'	00°12'00"	4.36'
C17	192.00'	10°11'26"	34.15'



DESIGNED
K. HOLTZ

DRAFTED
C.M. KOW

CHECKED
J. EVANS

PSOMAS

3187 Red Hill Avenue
 Suite 250
 Costa Mesa, CA 92626
 (714) 751-7373 Fax (714) 545-8883

DETACHMENT FROM
 CITY OF IRVINE AND ANNEXATION
 TO CITY OF LAGUNA HILLS

DATE: DECEMBER 2006	SHEET
SCALE: 1"=80'	4
JOB NO. 21RV130200	OF 6

LINE TABLE

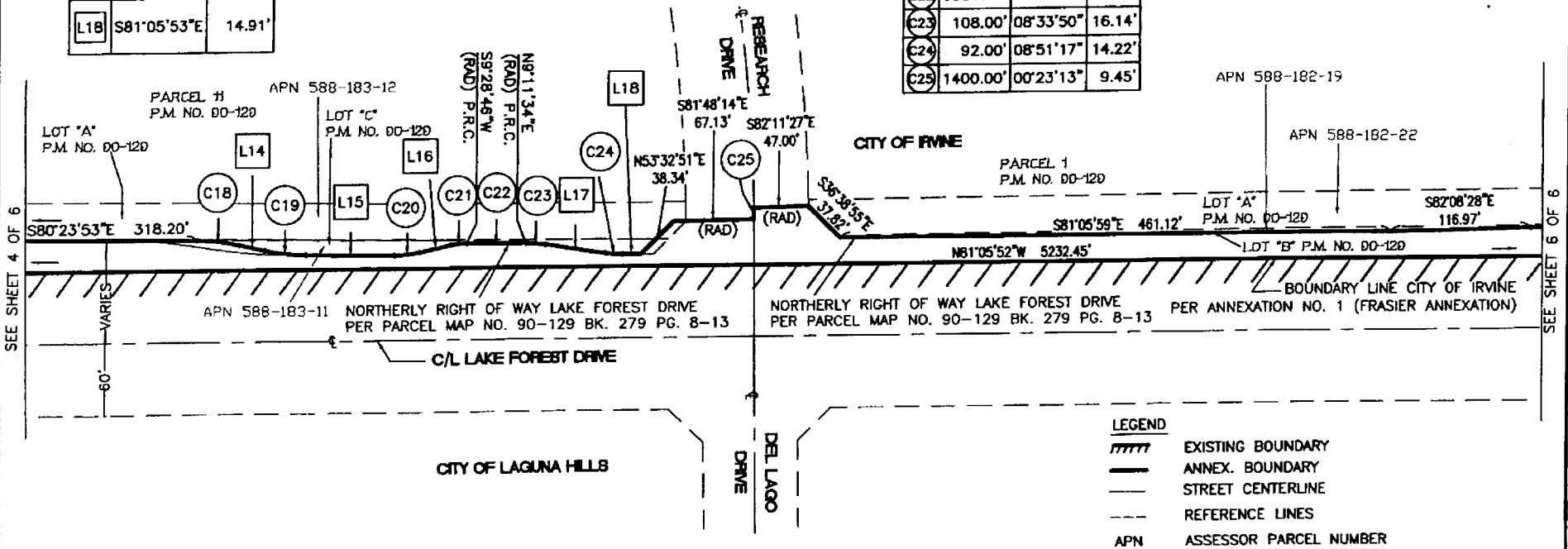
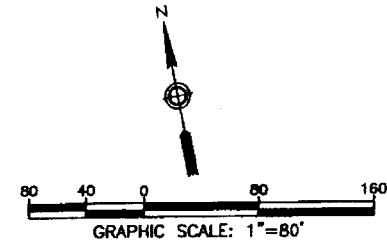
No.	Bearing	Distance
L14	S88°09'04"E	21.70'
L15	S80°23'53"E	74.80'
L16	N86°24'38"E	26.58'
L17	S72°14'36"E	50.32'
L18	S81°05'53"E	14.91'

EXHIBIT "B"

REORGANIZATION RO. 06-49

CURVE TABLE

No.	Radius	Delta	Length
C18	167.50'	12°14'49"	35.80'
C19	157.50'	12°14'49"	33.67'
C20	92.00'	13°11'29"	21.18'
C21	58.00'	13°04'08"	13.23'
C22	9981.00'	00°17'12"	49.94'
C23	108.00'	08°33'50"	16.14'
C24	92.00'	08°51'17"	14.22'
C25	1400.00'	00°23'13"	9.45'



SEE SHEET 4 OF 6

SEE SHEET 6 OF 6

DESIGNED
K. HOLTZ
DRAFTED
C.M. KOW
CHECKED
J. EVANS

PSOMAS

3187 Red Hill Avenue
Suite 250
Costa Mesa, CA 92626
(714) 751-7373 Fax (714) 545-8883

**DETACHMENT FROM
CITY OF IRVINE AND ANNEXATION
TO CITY OF LAGUNA HILLS**

DATE:	DECEMBER 2006	SHEET
SCALE:	1"=80'	
JOB NO.	21RV130200	5
		OF 6

LINE TABLE

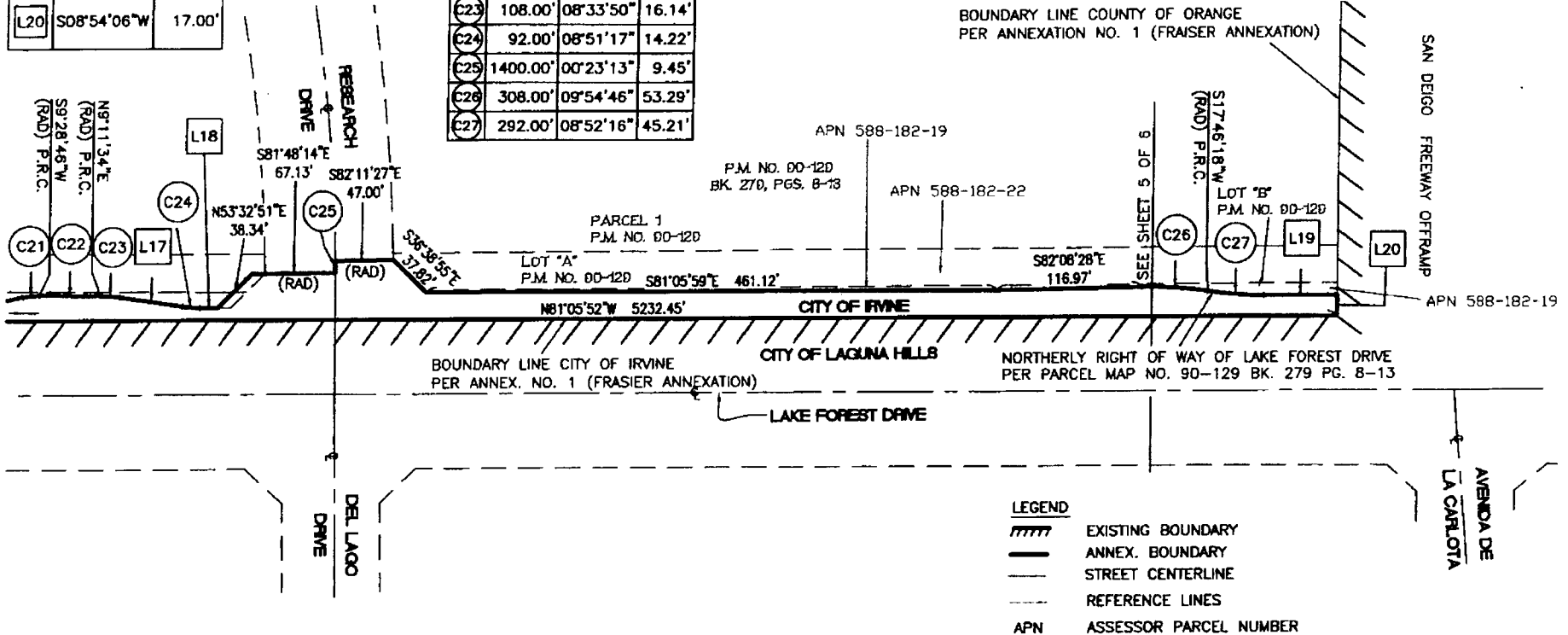
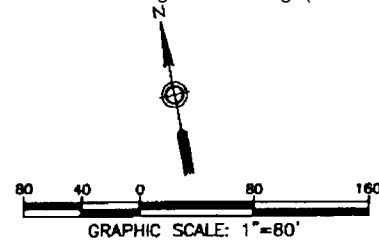
No.	Bearing	Distance
L17	S72°14'36"E	50.32'
L18	S81°05'53"E	14.91'
L19	S81°05'58"E	60.36'
L20	S08°54'06"W	17.00'

EXHIBIT "B"

REORGANIZATION RO. 06-94

CURVE TABLE

No.	Radius	Delta	Length
C21	58.00'	13°04'08"	13.23'
C22	9981.00'	00°17'12"	49.94'
C23	108.00'	08°33'50"	16.14'
C24	92.00'	08°51'17"	14.22'
C25	1400.00'	00°23'13"	9.45'
C26	308.00'	09°54'46"	53.29'
C27	292.00'	08°52'16"	45.21'



DESIGNED
K. HOLTZ

DRAFTED
C.M. KOW

CHECKED
J. EVANS

PSOMAS

3167 Red Hill Avenue
 Suite 250
 Costa Mesa, CA 92626
 (714) 751-7373 Fax (714) 545-8883

DETACHMENT FROM
 CITY OF IRVINE AND ANNEXATION
 TO CITY OF LAGUNA HILLS

DATE:
DECEMBER 2006

SCALE:
1"=80'

JOB NO.
21RV130200

SHEET

6

OF 6

SHEET 1 OF 3 SHEETS

EXHIBIT "B"

ANNEXATION NO. RO 05-60 TO THE CITY OF HUNTINGTON BEACH (BRIGHTWATER - PHASE 1)

SURVEYOR'S STATEMENT

THIS DOCUMENT WAS PREPARED BY ME OR UNDER MY DIRECTION.

DATED THIS 11th DAY OF October, 2007.

James O. Steines
JAMES O. STEINES, P.L.S. 6086
REGISTRATION EXPIRES 12/31/07



COUNTY SURVEYOR'S STATEMENT

THIS PROPOSAL DOES MEET THE APPROVAL OF THE ORANGE COUNTY SURVEYOR'S OFFICE.

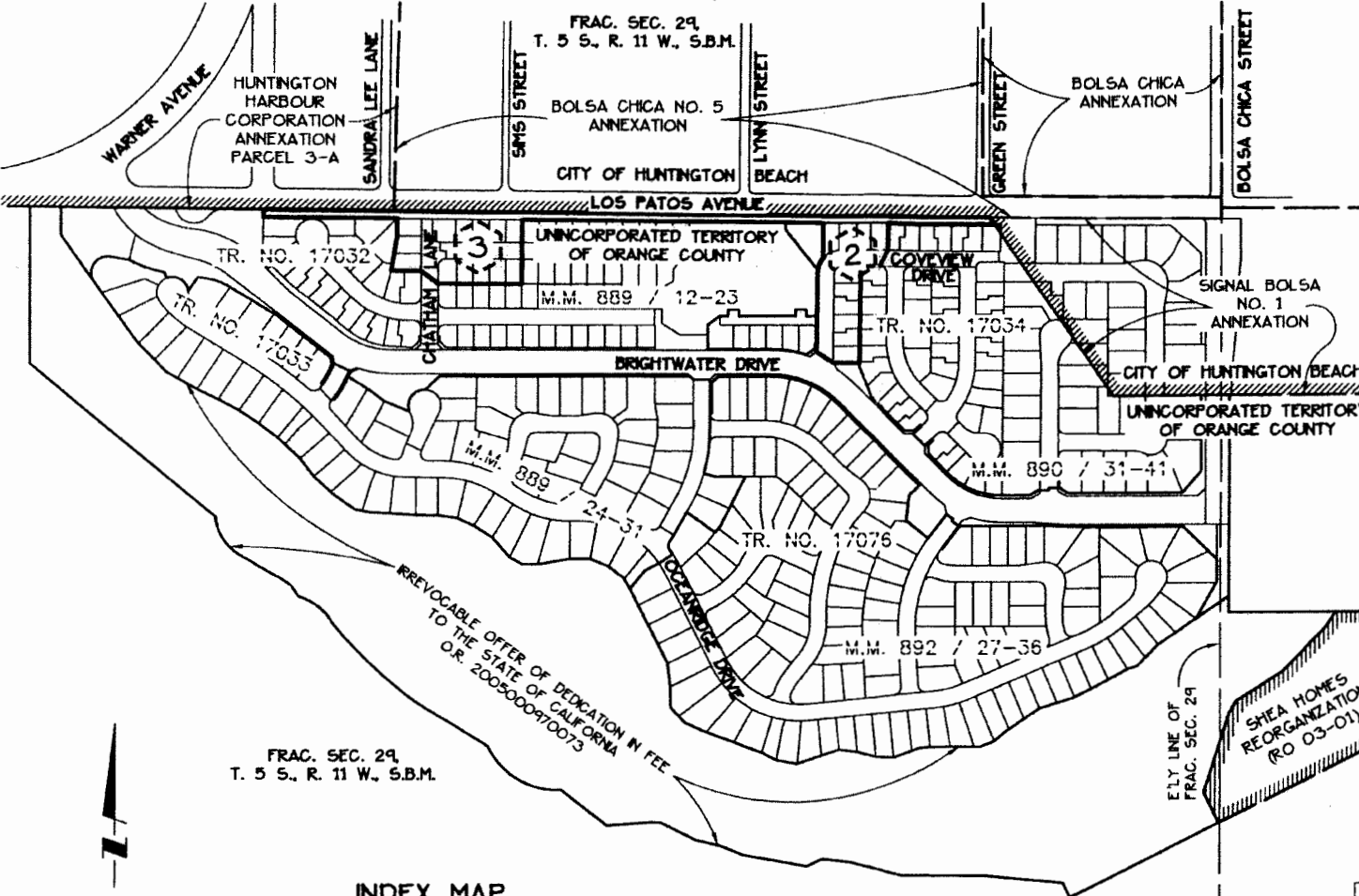
DATED THIS 22nd DAY OF OCTOBER, 2007.

BY: Raymond L. Mathe DEPUTY
RAYMOND L. MATHE, L.S. 6185
EXPIRATION DATE 3/31/08
COUNTY SURVEYOR



LEGEND

- BOUNDARY OF ANNEXATION NO. RO 05-60 (BRIGHTWATER - PHASE 1)
- EXISTING CITY OF HUNTINGTON BEACH BOUNDARY



FRAC. SEC. 29,
T. 5 S., R. 11 W., S.B.M.

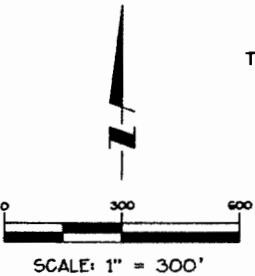
INDEX MAP

INDICATES SHEET NO.



NOTES

- THIS ANNEXATION CONTAINS 3.495 ACRES +/-.
- 101-016-14 = ASSESSORS PARCEL NUMBER (TYPICAL)



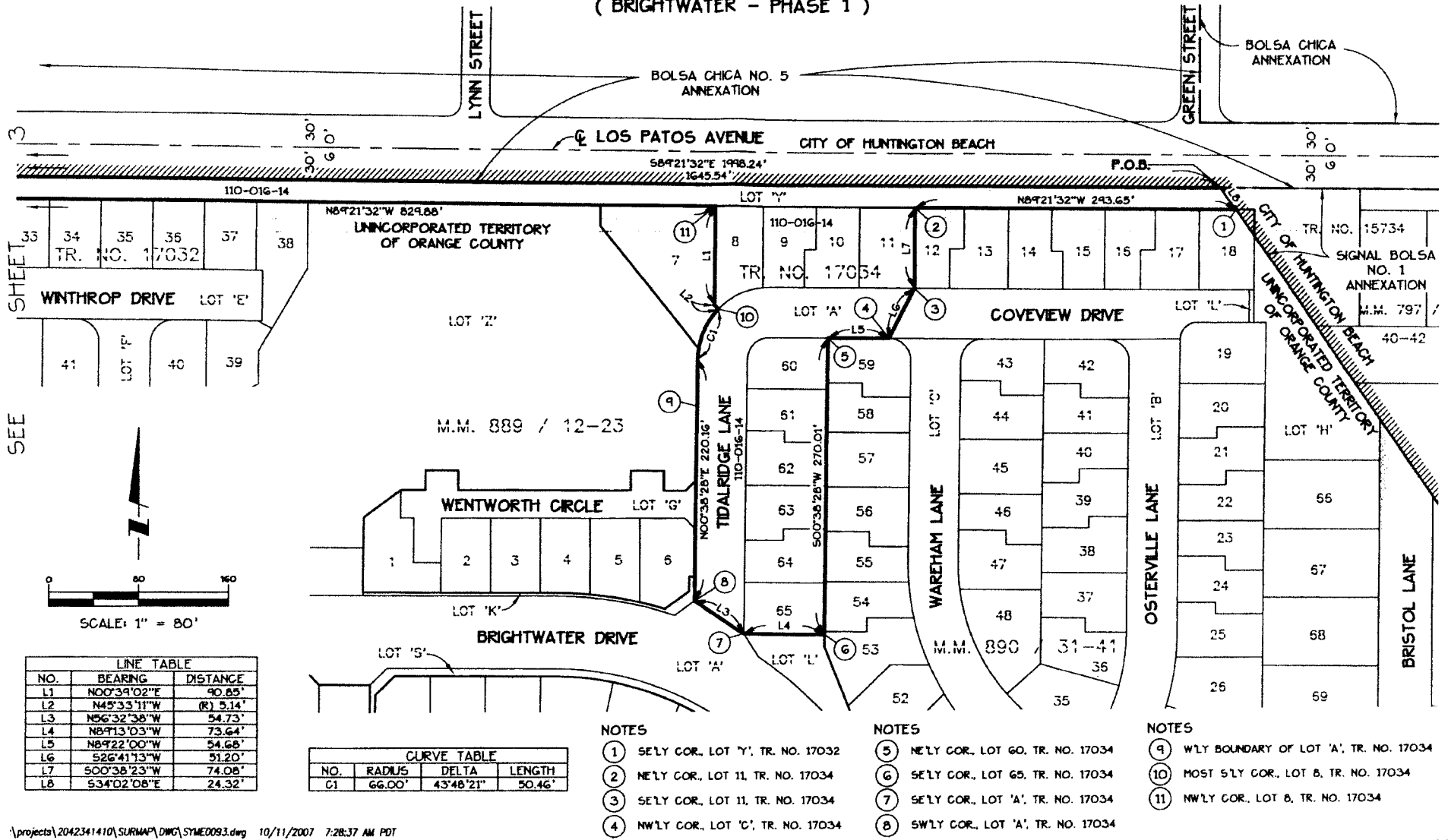
Stantec CONSULTING INC.
19 TECHNOLOGY DRIVE
IRVINE, CA 92618
949.923.6000

J.N. 2042 341410 | DATE: 10/11/07

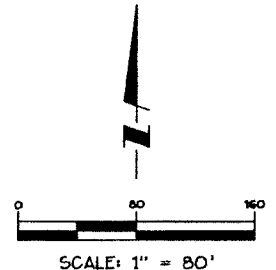
SHEET 2 OF 3 SHEETS

EXHIBIT "B"

ANNEXATION NO. RO 05-60 TO THE CITY OF HUNTINGTON BEACH (BRIGHTWATER - PHASE 1)



SEE SHEET 33



LINE TABLE		
NO.	BEARING	DISTANCE
L1	N00°39'02"E	90.65'
L2	N45°33'11"W	(R) 5.14'
L3	N56°32'38"W	54.73'
L4	N8°13'03"W	73.64'
L5	N8°22'00"W	54.68'
L6	S26°41'13"W	51.20'
L7	S00°38'23"W	74.08'
L8	S34°02'08"E	24.32'

CURVE TABLE			
NO.	RADIUS	DELTA	LENGTH
C1	66.00'	43°48'21"	50.46'

- NOTES**
- ① SE'LY COR., LOT 'Y', TR. NO. 17032
 - ② NE'LY COR., LOT 11, TR. NO. 17034
 - ③ SE'LY COR., LOT 11, TR. NO. 17034
 - ④ NW'LY COR., LOT 'C', TR. NO. 17034

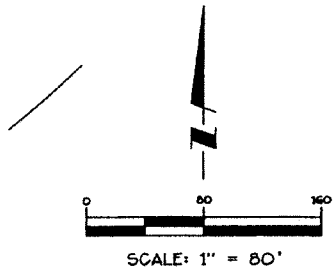
- NOTES**
- ⑤ NE'LY COR., LOT 60, TR. NO. 17034
 - ⑥ SE'LY COR., LOT 65, TR. NO. 17034
 - ⑦ SE'LY COR., LOT 'A', TR. NO. 17034
 - ⑧ SW'LY COR., LOT 'A', TR. NO. 17034

- NOTES**
- ⑨ W'LY BOUNDARY OF LOT 'A', TR. NO. 17034
 - ⑩ MOST S'LY COR., LOT 8, TR. NO. 17034
 - ⑪ NW'LY COR., LOT 8, TR. NO. 17034

SHEET 3 OF 3 SHEETS

EXHIBIT "B"

ANNEXATION NO. RO 05-60 TO THE CITY OF HUNTINGTON BEACH (BRIGHTWATER - PHASE 1)

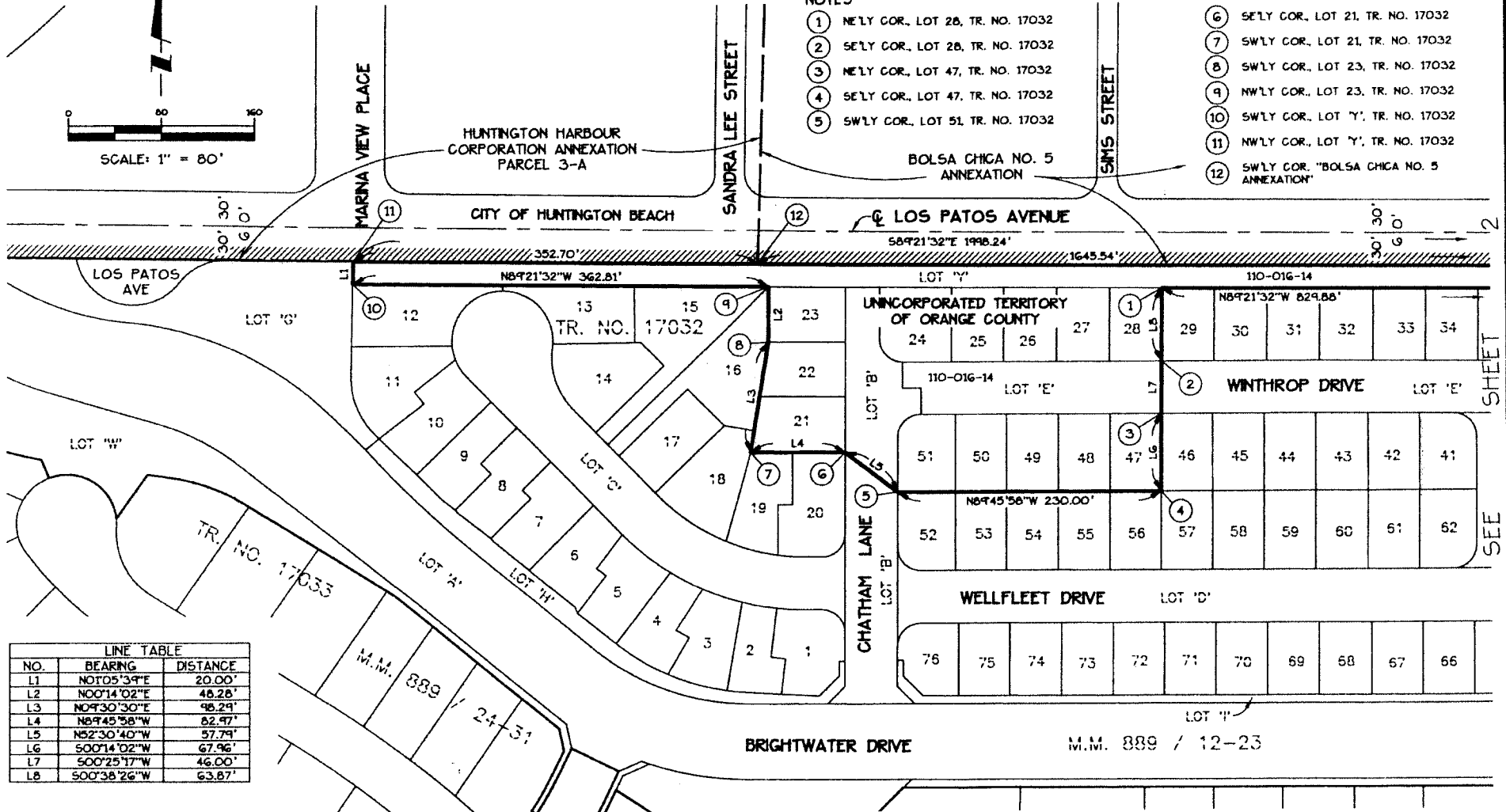


NOTES

- ① NE'LY COR., LOT 28, TR. NO. 17032
- ② SE'LY COR., LOT 28, TR. NO. 17032
- ③ NE'LY COR., LOT 47, TR. NO. 17032
- ④ SE'LY COR., LOT 47, TR. NO. 17032
- ⑤ SW'LY COR., LOT 51, TR. NO. 17032

NOTES

- ⑥ SE'LY COR., LOT 21, TR. NO. 17032
- ⑦ SW'LY COR., LOT 21, TR. NO. 17032
- ⑧ SW'LY COR., LOT 23, TR. NO. 17032
- ⑨ NW'LY COR., LOT 23, TR. NO. 17032
- ⑩ SW'LY COR., LOT 'Y', TR. NO. 17032
- ⑪ NW'LY COR., LOT 'Y', TR. NO. 17032
- ⑫ SW'LY COR., "BOLSA CHICA NO. 5 ANNEXATION"



LINE TABLE		
NO.	BEARING	DISTANCE
L1	N0°05'39"E	20.00'
L2	N00°14'02"E	48.28'
L3	N09°30'30"E	98.29'
L4	N8°45'58"W	82.97'
L5	N52°30'40"W	57.74'
L6	S00°14'02"W	67.96'
L7	S00°25'17"W	46.00'
L8	S00°38'26"W	63.87'

SHEET 1 OF 5 SHEETS

EXHIBIT "B"

ANNEXATION NO. RO 05-60 TO THE CITY OF HUNTINGTON BEACH (BRIGHTWATER - PHASE 2)

THIS DOCUMENT WAS PREPARED BY ME OR UNDER MY DIRECTION.

DATED THIS 25th DAY OF January, 2008.

James O. Steines
JAMES O. STEINES, P.L.S. 6086
REGISTRATION EXPIRES 12/31/09



THIS PROPOSAL DOES MEET THE APPROVAL OF THE ORANGE COUNTY SURVEYOR'S OFFICE.

DATED THIS 28th DAY OF JANUARY, 2008.

BY: *Raymond L. Mathe* DEPUTY
RAYMOND L. MATHE, L.S. 6185
EXPIRATION DATE 3/31/08
COUNTY SURVEYOR



LEGEND

BOUNDARY OF ANNEXATION NO. RO 05-60 (BRIGHTWATER - PHASE 2)

EXISTING CITY OF HUNTINGTON BEACH BOUNDARY

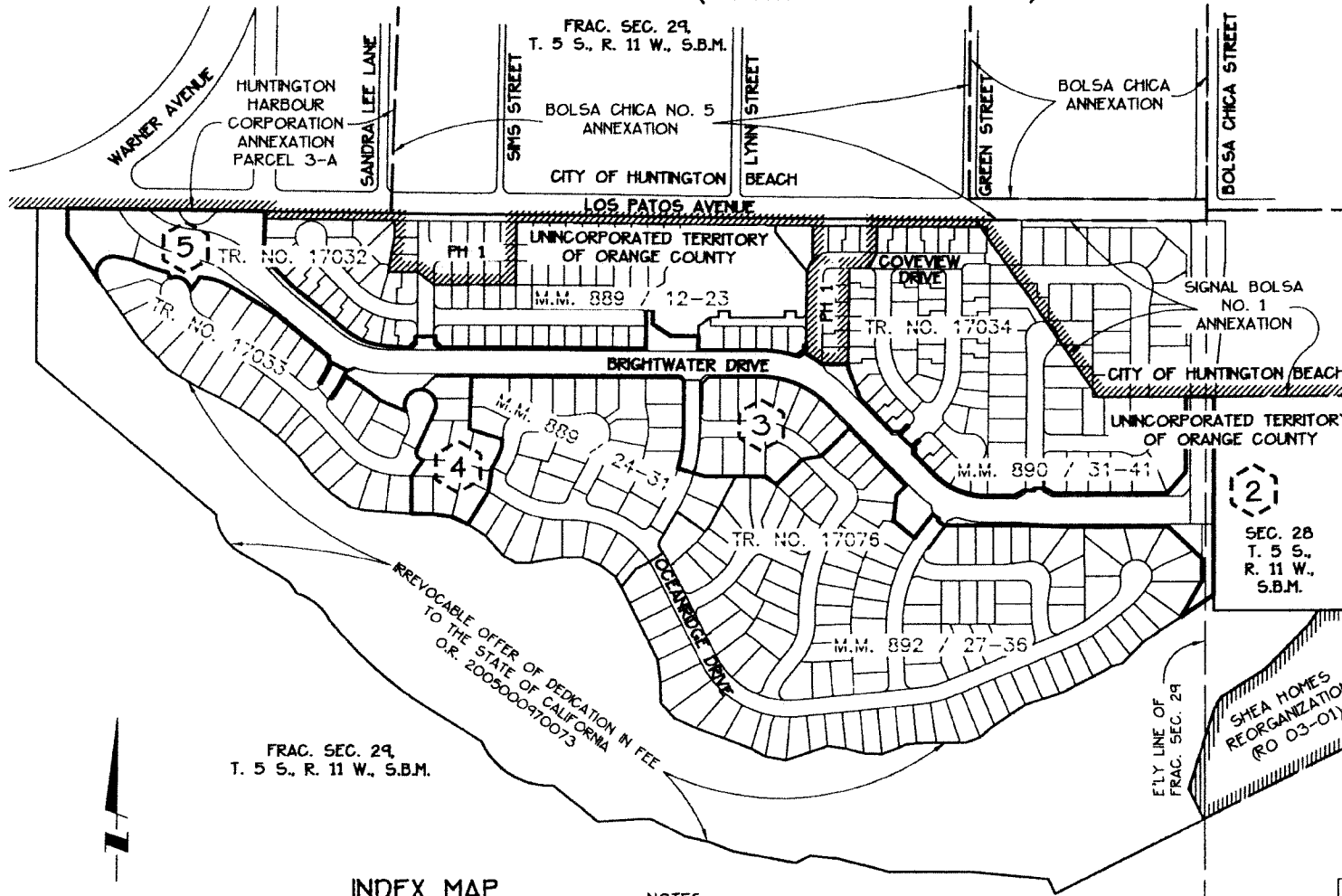
PH #: INDICATES ANNEXATION NO. RO 05-60 (BRIGHTWATER - PHASE #)

[] RECORD DATA PER ADJOINING ANNEXATIONS

STANTEC CONSULTING INC.
19 TECHNOLOGY DRIVE
IRVINE, CA 92618
949.923.6000

J.N. 2042 341410

DATE: 1/25/08



FRAC. SEC. 29,
T. 5 S., R. 11 W., S.B.M.

INDEX MAP

[2] INDICATES SHEET NO.

NOTES

THIS ANNEXATION CONTAINS 13.527 ACRES +/-.

101-016-14 = ASSESSORS PARCEL NUMBER (TYPICAL)



SCALE: 1" = 300'

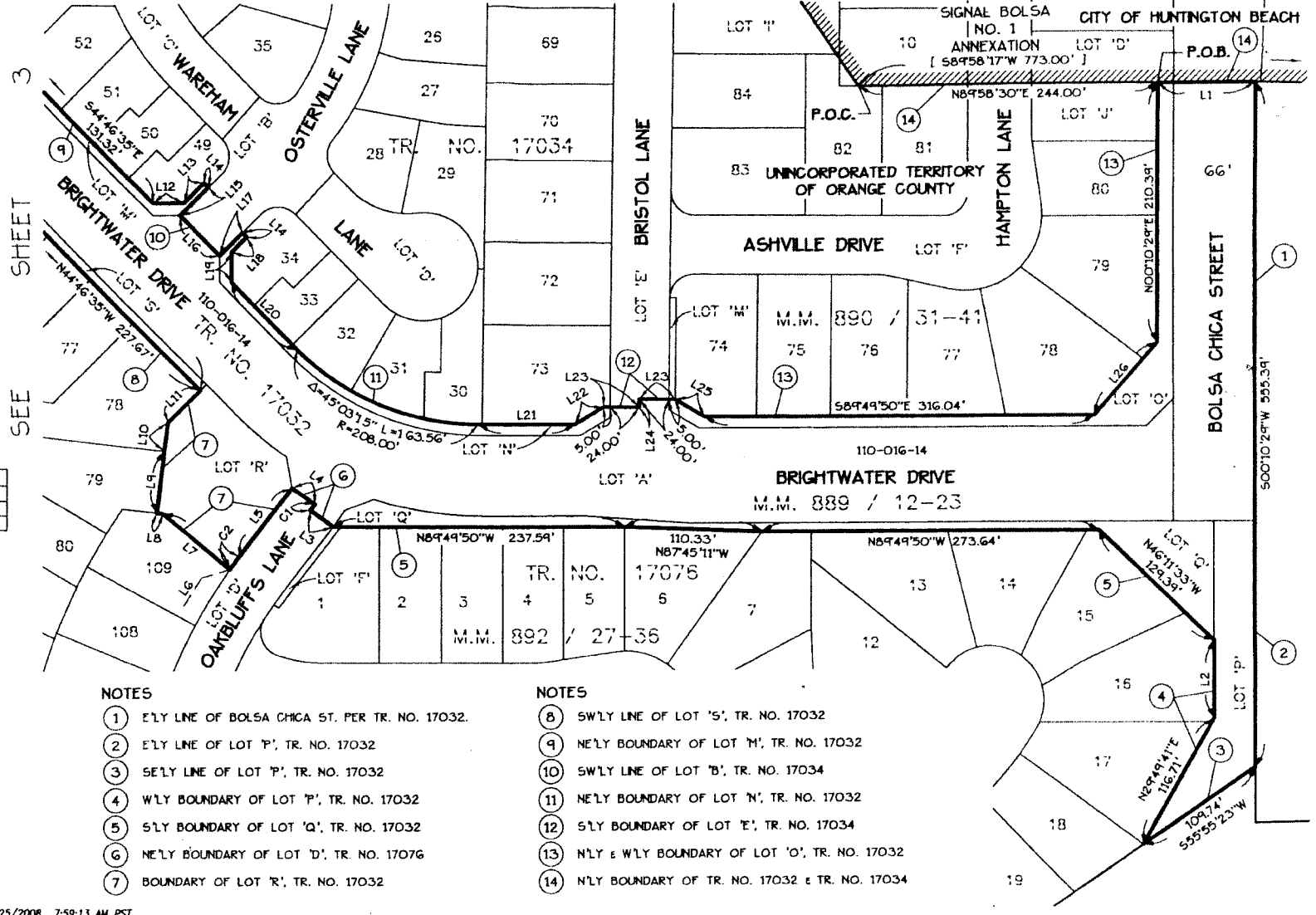
SHEET 2 OF 5 SHEETS

EXHIBIT "B"

ANNEXATION NO. RO 05-60 TO THE CITY OF HUNTINGTON BEACH (BRIGHTWATER - PHASE 2)

LINE TABLE		
NO.	BEARING	DISTANCE
L1	N89°58'30"E	79.00'
L2	N00°10'10"E	62.61'
L3	N53°32'04"W (R)	23.00'
L4	N54°58'18"W (R)	22.78'
L5	S37°34'21"W	70.96'
L6	N54°11'57"W (R)	
L7	N49°57'30"W	71.52'
L8	N63°19'45"W	4.59'
L9	N06°40'15"E	90.89'
L10	N07°04'00"E	23.53'
L11	N45°13'25"E	36.95'
L12	S89°46'35"E	24.62'
L13	N45°13'25"E	23.25'
L14	S44°46'35"E	5.00'
L15	S45°13'25"W	32.39'
L16	S44°46'35"E	46.00'
L17	N45°13'25"E	26.58'
L18	S45°13'25"W	17.44'
L19	S00°13'25"W	24.62'
L20	S44°46'35"E	76.77'
L21	S89°49'50"E	79.50'
L22	N59°33'10"E	27.38'
L23	S89°21'32"E	29.00'
L24	N00°38'28"E	6.71'
L25	S58°31'14"E	27.29'
L26	N41°06'14"E	78.33'

CURVE TABLE			
NO.	RADIUS	DELTA	LENGTH
C1	250.00'	OT26°14"	6.27'
C2	423.00'	OT46°18"	13.08'

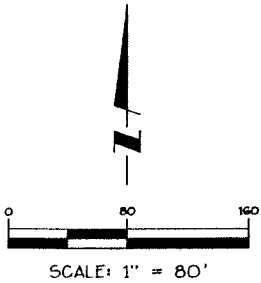


NOTES

- (1) E'LY LINE OF BOLSA CHICA ST. PER TR. NO. 17032.
- (2) E'LY LINE OF LOT 'P', TR. NO. 17032
- (3) SE'LY LINE OF LOT 'P', TR. NO. 17032
- (4) W'LY BOUNDARY OF LOT 'P', TR. NO. 17032
- (5) S'LY BOUNDARY OF LOT 'Q', TR. NO. 17032
- (6) NE'LY BOUNDARY OF LOT 'D', TR. NO. 17076
- (7) BOUNDARY OF LOT 'R', TR. NO. 17032

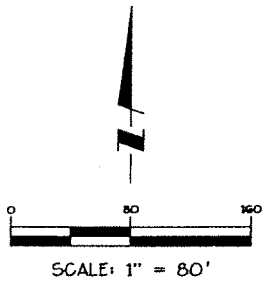
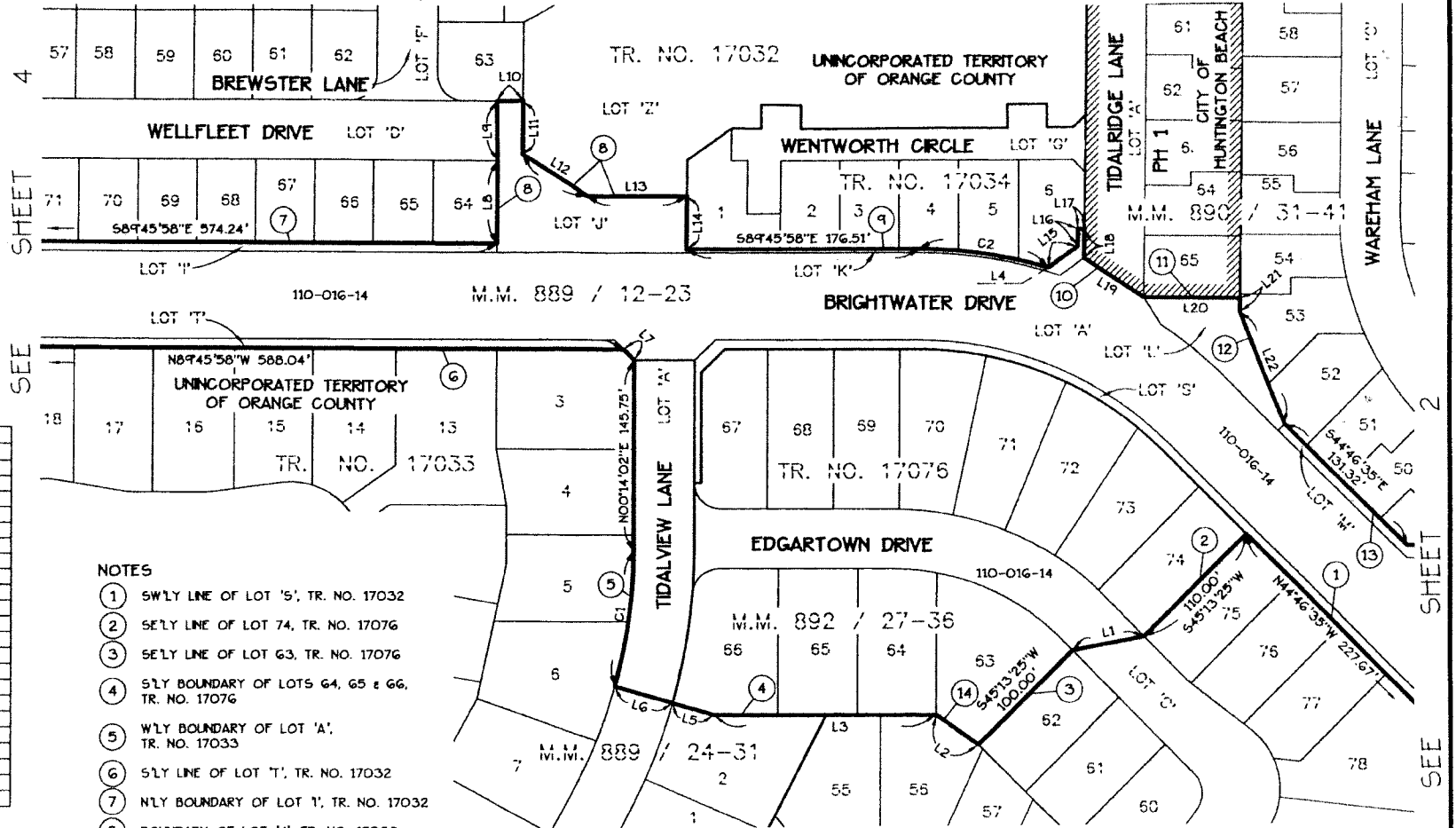
NOTES

- (8) SW'LY LINE OF LOT 'S', TR. NO. 17032
- (9) NE'LY BOUNDARY OF LOT 'M', TR. NO. 17032
- (10) SW'LY LINE OF LOT 'B', TR. NO. 17034
- (11) NE'LY BOUNDARY OF LOT 'N', TR. NO. 17032
- (12) S'LY BOUNDARY OF LOT 'E', TR. NO. 17034
- (13) N'LY & W'LY BOUNDARY OF LOT 'O', TR. NO. 17032
- (14) N'LY BOUNDARY OF TR. NO. 17032 & TR. NO. 17034



SHEET 3 OF 5 SHEETS

EXHIBIT "B"
ANNEXATION NO. RO 05-60 TO THE CITY OF HUNTINGTON BEACH
(BRIGHTWATER - PHASE 2)



LINE TABLE		
NO.	BEARING	DISTANCE
L1	S79°27'37"W	55.64'
L2	N54°26'03"W	38.67'
L3	N89°45'58"W	168.69'
L4	N17°02'58"E	(R)
L5	N73°59'39"W	32.12'
L6	N73°59'39"W	(R) 46.00'
L7	N44°45'58"W	11.70'
L8	N00°14'02"E	63.00'
L9	N00°39'17"W	46.00'
L10	S89°45'58"E	20.00'
L11	S00°14'02"W	41.00'
L12	S57°12'18"E	59.12'
L13	S89°45'58"E	77.11'
L14	S00°37'53"W	40.18'
L15	N54°13'10"E	27.16'
L16	N00°38'28"E	13.15'
L17	S89°21'32"E	5.00'
L18	S00°36'28"W	21.89'
L19	S56°32'38"E	54.73'
L20	S89°13'03"E	73.64'
L21	S00°38'28"W	10.41'
L22	S21°48'42"E	91.28'

CURVE TABLE			
NO.	RADIUS	DELTA	LENGTH
C1	377.00'	15°46'19"	103.78'
C2	336.00'	16°48'56"	98.61'

- NOTES**
- ① SWLY LINE OF LOT 'S', TR. NO. 17032
 - ② SE'LY LINE OF LOT 74, TR. NO. 17076
 - ③ SE'LY LINE OF LOT 63, TR. NO. 17076
 - ④ S'LY BOUNDARY OF LOTS 64, 65 & 66, TR. NO. 17076
 - ⑤ W'LY BOUNDARY OF LOT 'A', TR. NO. 17033
 - ⑥ S'LY LINE OF LOT 'T', TR. NO. 17032
 - ⑦ N'LY BOUNDARY OF LOT 'I', TR. NO. 17032
 - ⑧ BOUNDARY OF LOT 'J', TR. NO. 17032
 - ⑨ GENERAL N'LY BOUNDARY OF LOT 'K', TR. NO. 17032
 - ⑩ SW'LY LINE OF LOT 'A', TR. NO. 17034
 - ⑪ N'LY LINE OF LOT 'L', TR. NO. 17032

- NOTES**
- ⑫ E'LY BOUNDARY OF LOT 'L', TR. NO. 17032
 - ⑬ NE'LY BOUNDARY OF LOT 'M', TR. NO. 17032
 - ⑭ SW'LY LINE OF LOT 63, TR. NO. 17076

SHEET 4 OF 5 SHEETS

EXHIBIT "B"

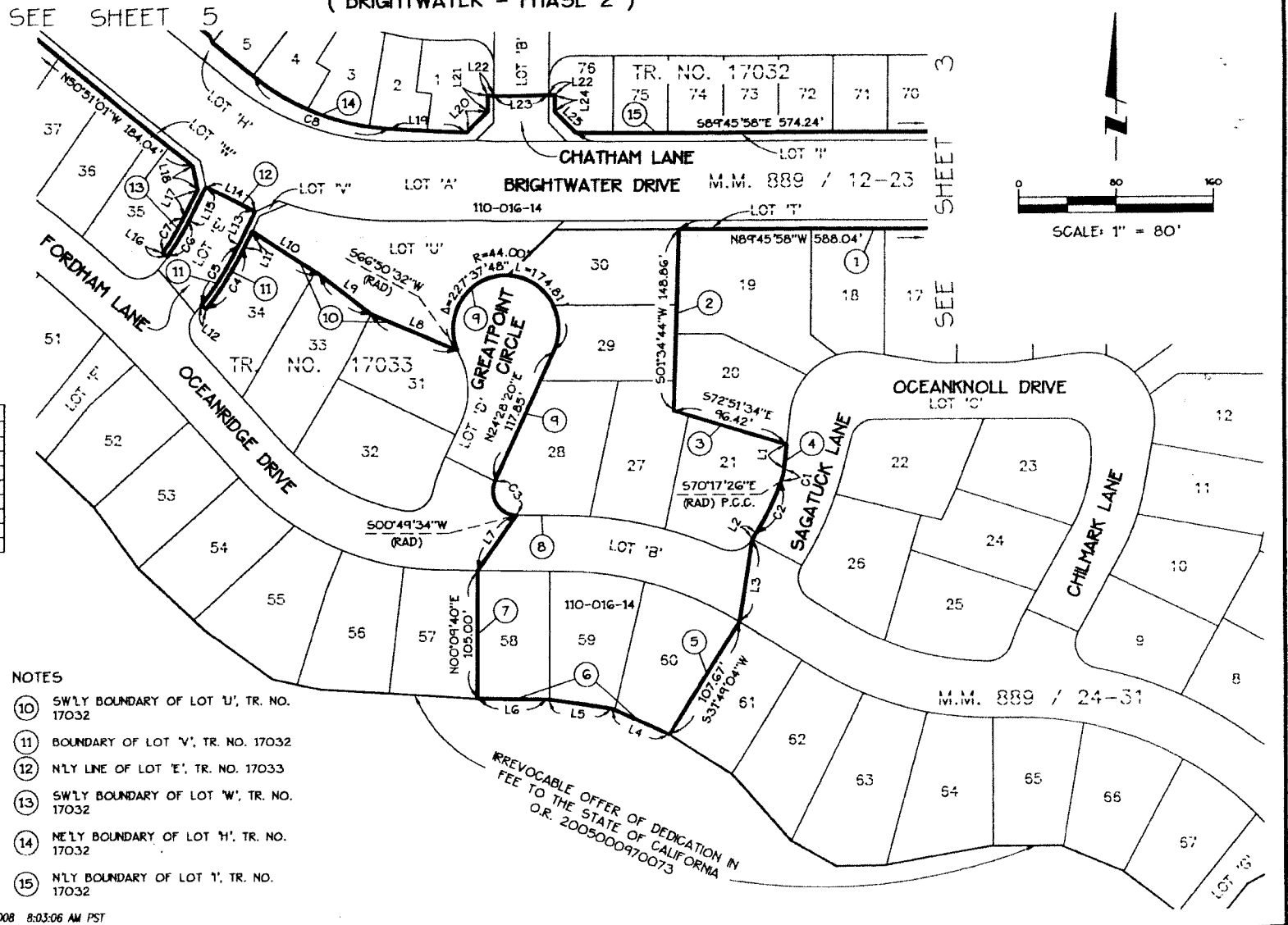
ANNEXATION NO. RO 05-60 TO THE CITY OF HUNTINGTON BEACH (BRIGHTWATER - PHASE 2)

LINE TABLE		
NO.	BEARING	DISTANCE
L1	S06°05'07"W	19.91'
L2	S31°48'53"W	5.98'
L3	S08°54'34"W	68.35'
L4	N65°45'31"W	52.06'
L5	N81°57'37"W	52.88'
L6	N89°07'36"W	58.79'
L7	N35°36'08"E	56.00'
L8	N67°18'59"W	77.35'
L9	N52°56'51"W	53.39'
L10	N97°18'42"W	65.88'
L11	S26°06'37"W	15.20'
L12	N51°38'57"W (R)	5.00'
L13	N26°06'37"E	30.87'
L14	N64°11'01"W	46.00'
L15	S26°06'37"W	30.63'
L16	N59°14'18"W (R)	5.00'
L17	N26°06'37"E	25.67'
L18	N12°22'12"W	19.91'
L19	S86°58'11"E	63.35'
L20	N45°14'02"E	24.62'
L21	N00°14'02"E	12.82'
L22	S89°45'58"E	5.00'
L23	N87°21'14"E	46.01'
L24	S00°14'02"W	13.53'
L25	S44°45'58"E	24.62'

CURVE TABLE			
NO.	RADIUS	DELTA	LENGTH
C1	45.00'	13°37'27"	10.70'
C2	227.00'	12°06'19"	47.96'
C3	20.00'	113°38'46"	39.67'
C4	278.00'	12°14'26"	59.39'
C5	273.00'	12°14'26"	58.32'
C6	227.00'	08°39'05"	34.27'
C7	222.00'	08°39'05"	33.52'
C8	200.00'	39°07'29"	122.61'

- NOTES
- ① S'LY LINE OF LOT 'T', TR. NO. 17033
 - ② W'LY LINE OF LOTS 19 & 20, TR. NO. 17033
 - ③ S'LY LINE OF LOT 20, TR. NO. 17033
 - ④ E'LY BOUNDARY OF LOT 21, TR. NO. 17033
 - ⑤ SE'LY LINE OF LOT 60, TR. NO. 17033
 - ⑥ S'LY LINES OF LOTS 60, 59 & 58, TR. NO. 17033
 - ⑦ W'LY LINE OF LOT 58, TR. NO. 17033
 - ⑧ S'LY BOUNDARY OF LOT 28, TR. NO. 17033
 - ⑨ BOUNDARY OF LOT 'D', TR. NO. 17033

- NOTES
- ⑩ SW'LY BOUNDARY OF LOT 'U', TR. NO. 17032
 - ⑪ BOUNDARY OF LOT 'V', TR. NO. 17032
 - ⑫ N'LY LINE OF LOT 'E', TR. NO. 17033
 - ⑬ SW'LY BOUNDARY OF LOT 'W', TR. NO. 17032
 - ⑭ NE'LY BOUNDARY OF LOT 'H', TR. NO. 17032
 - ⑮ N'LY BOUNDARY OF LOT 'I', TR. NO. 17032



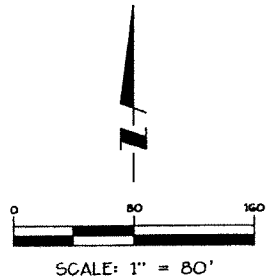
SHEET 5 OF 5 SHEETS

EXHIBIT "B"

ANNEXATION NO. RO 05-60 TO THE CITY OF HUNTINGTON BEACH (BRIGHTWATER - PHASE 2)

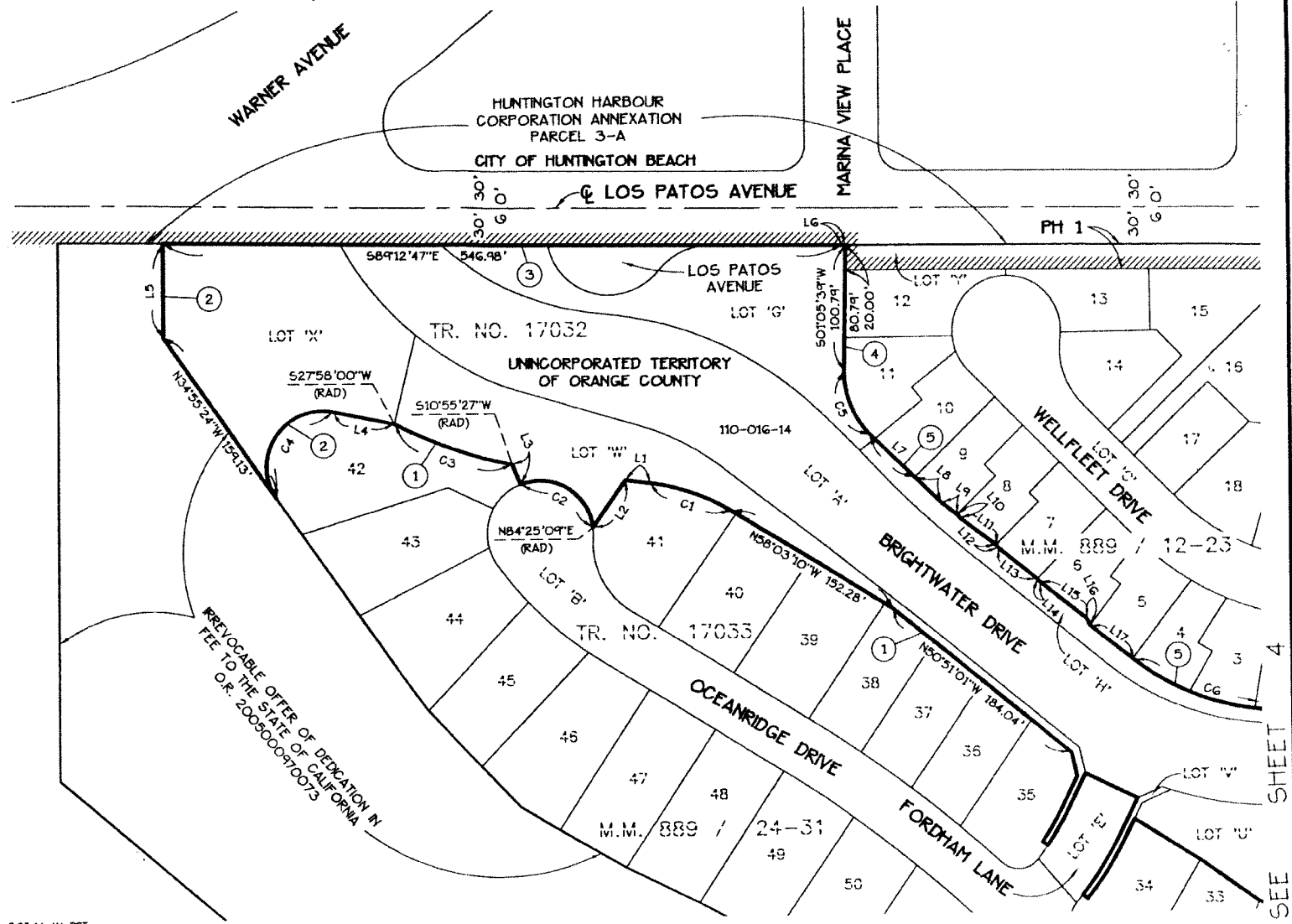
LINE TABLE		
NO.	BEARING	DISTANCE
L1	N82°09'30"W	19.43'
L2	S34°35'03"W	46.50'
L3	N21°20'20"W (R)	17.33'
L4	N78°34'29"W	49.82'
L5	N00°00'00"E	75.93'
L6	S8°21'32"E	2.76'
L7	S45°31'49"E	50.00'
L8	S44°45'32"E	29.46'
L9	S51°51'31"E	16.46'
L10	S38°57'17"E	3.40'
L11	S52°31'50"E	36.60'
L12	S38°40'32"E	3.05'
L13	S50°48'05"E	40.28'
L14	S41°09'21"E	2.90'
L15	S51°36'57"E	48.20'
L16	S23°12'35"E	5.93'
L17	S51°50'42"E	44.12'

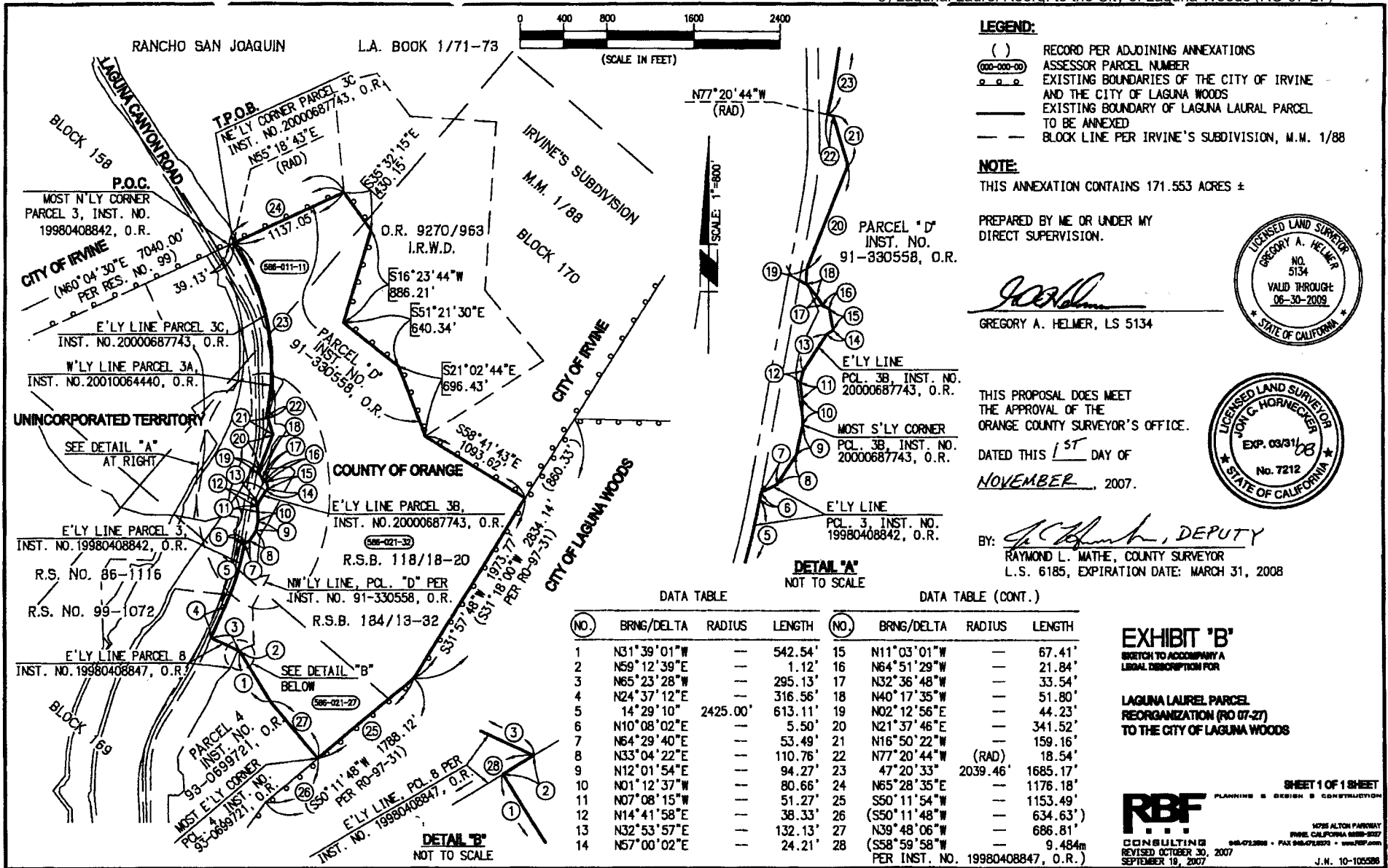
CURVE TABLE			
NO.	RADIUS	DELTA	LENGTH
C1	164.00'	24°06'20"	69.00'
C2	43.00'	105°45'29"	79.37'
C3	343.00'	170°2'33"	102.02'
C4	45.00'	136°20'55"	107.04'
C5	70.00'	46°37'28"	56.96'
C6	200.00'	35°07'29"	122.61'



NOTES

- ① SWLY BOUNDARY OF LOT 'W', TR. NO. 17032
- ② SLY & WLY BOUNDARY OF LOT 'X', TR. NO. 17032
- ③ NLY BOUNDARY OF TR. NO. 17032
- ④ ELY BOUNDARY OF LOT 'G', TR. NO. 17032
- ⑤ NELY BOUNDARY OF LOT 'H', TR. NO. 17032





LEGEND:

- () RECORD PER ADJOINING ANNEXATIONS
- (000-000-00) ASSESSOR PARCEL NUMBER
- EXISTING BOUNDARIES OF THE CITY OF IRVINE AND THE CITY OF LAGUNA WOODS
- EXISTING BOUNDARY OF LAGUNA LAUREL PARCEL TO BE ANNEXED
- BLOCK LINE PER IRVINE'S SUBDIVISION, M.M. 1/88

NOTE:

THIS ANNEXATION CONTAINS 171.553 ACRES ±

PREPARED BY ME OR UNDER MY DIRECT SUPERVISION.

Gregory A. Helmer

GREGORY A. HELMER, LS 5134



THIS PROPOSAL DOES MEET THE APPROVAL OF THE ORANGE COUNTY SURVEYOR'S OFFICE.

DATED THIS 1ST DAY OF

NOVEMBER, 2007.



BY: *Raymond L. Mathe*, DEPUTY
 RAYMOND L. MATHE, COUNTY SURVEYOR
 L.S. 6185, EXPIRATION DATE: MARCH 31, 2008

DETAIL 'A'
NOT TO SCALE

DATA TABLE

(NO.)	BRNG/DELTA	RADIUS	LENGTH
1	N31°39'01"W	---	542.54'
2	N59°12'39"E	---	1.12'
3	N65°23'28"W	---	295.13'
4	N24°37'12"E	---	316.56'
5	14°29'10"	2425.00'	613.11'
6	N10°08'02"E	---	5.50'
7	N64°29'40"E	---	53.49'
8	N33°04'22"E	---	110.76'
9	N12°01'54"E	---	94.27'
10	N01°12'37"W	---	80.66'
11	N07°08'15"W	---	51.27'
12	N14°41'58"E	---	38.33'
13	N32°53'57"E	---	132.13'
14	N57°00'02"E	---	24.21'

DATA TABLE (CONT.)

(NO.)	BRNG/DELTA	RADIUS	LENGTH
15	N11°03'01"W	---	67.41'
16	N64°51'29"W	---	21.84'
17	N32°36'48"W	---	33.54'
18	N40°17'35"W	---	51.80'
19	N02°12'56"E	---	44.23'
20	N21°37'46"E	---	341.52'
21	N16°50'22"W	---	159.16'
22	N77°20'44"W (RAD)	---	18.54'
23	47°20'33"	2039.46'	1685.17'
24	N65°28'35"E	---	1176.18'
25	S50°11'54"W	---	1153.49'
26	(S50°11'48"W	---	634.63')
27	N39°48'06"W	---	686.81'
28	(S58°59'58"W	---	9.484m

EXHIBIT 'B'
 SKETCH TO ACCOMPANY A LEGAL DESCRIPTION FOR

LAGUNA LAUREL PARCEL REORGANIZATION (RO 07-27) TO THE CITY OF LAGUNA WOODS

SHEET 1 OF 1 SHEET

RBF PLANNING & DESIGN & CONSTRUCTION
 14725 ALTON PARKWAY
 IRVINE, CALIFORNIA 92618-9227
 949-471-2888 • FAX 949-471-9279 • WWW.RBF.COM
 REVISED OCTOBER 30, 2007
 SEPTEMBER 19, 2007
 J.N. 10-1005386

SHEET 1 OF 1 SHEETS

EXHIBIT "B"
 CANYON REORGANIZATION TO THE CITY OF LAGUNA BEACH (RO 06-48)

SURVEYOR'S STATEMENT

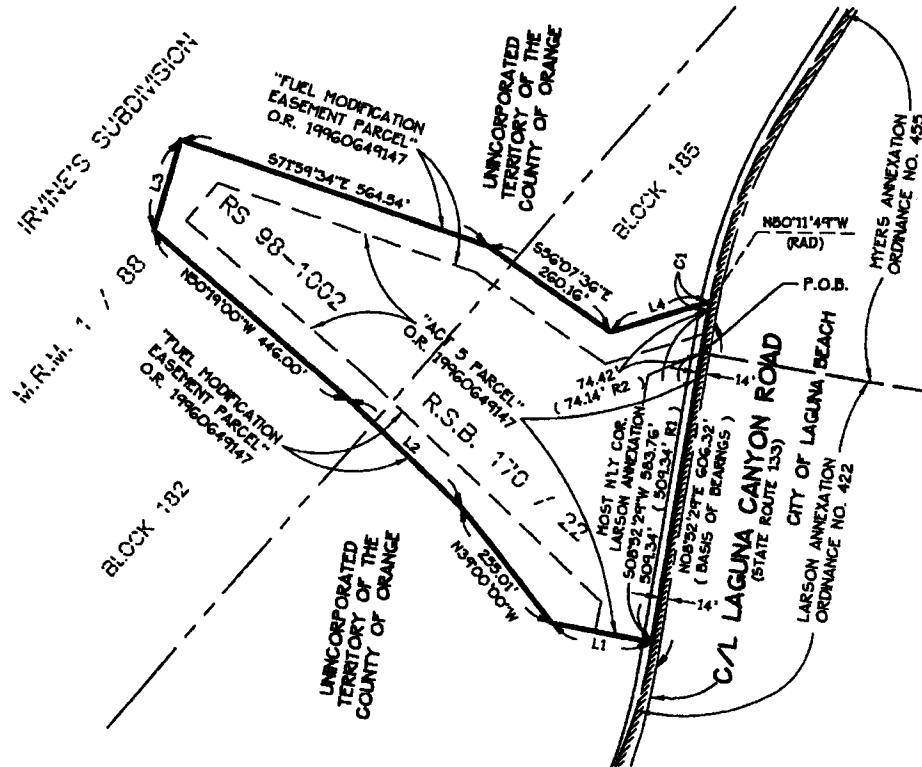
THIS DOCUMENT WAS PREPARED BY ME OR UNDER MY DIRECTION.
 DATED THIS 23rd DAY OF August, 2007.
James O. Steves
 JAMES O. STEVES, P.L.S. 6086
 REGISTRATION EXPIRES 12/31/07



COUNTY SURVEYOR'S STATEMENT

THIS PROPOSAL DOES MEET THE APPROVAL OF THE ORANGE COUNTY SURVEYOR'S OFFICE.
 DATED THIS ___ DAY OF _____ 2007.

BY: Raymond L. Mathe, L.S. 6185
 RAYMOND L. MATHE, L.S. 6185
 EXPIRATION DATE 3/31/08
 COUNTY SURVEYOR



NOTES

THIS ANNEXATION CONTAINS 8.520 ACRES +/-.
 BEARINGS SHOWN HEREON ARE BASED UPON THE BEARING OF NORTH 08°52'29" EAST ALONG THE CENTERLINE OF LAGUNA CANYON ROAD PER RECORD OF SURVEY 98-1002, FILED IN BOOK 170, PAGE 22 OF RECORD OF SURVEYS, IN THE OFFICE OF THE COUNTY RECORDER OF ORANGE COUNTY, CALIFORNIA.
 (R1) RECORD DATA PER LARSON ANNEXATION, ORDINANCE NO. 422.
 (R2) RECORD DATA PER MYERS ANNEXATION, ORDINANCE NO. 435.



SCALE: 1" = 200'

LEGEND

- BOUNDARY OF ANNEXATION
- EXISTING CITY OF LAGUNA BEACH BOUNDARY
- BLOCK LINE, IRVINE'S SUBDIVISION

LINE TABLE		
NO.	BEARING	DISTANCE
L1	N75°53'00"W	177.65'
L2	N47°00'00"W	272.00'
L3	N16°05'00"E	164.00'
L4	N72°33'32"E	179.98'

CURVE TABLE			
NO.	RADIUS	DELTA	LENGTH
C1	925.00'	00°33'42"	14.93'

Stantec
 STANTEC CONSULTING INC.
 19 TECHNOLOGY DRIVE
 IRVINE, CA 92618
 949.923.6000
 stan.com

JUN 2042 302331 DATE: 8/23/07

SHEET 1 OF 1 SHEETS

EXHIBIT "B"

CANYON REORGANIZATION TO THE CITY OF LAGUNA BEACH (RO 06-48)

SURVEYOR'S STATEMENT

THIS DOCUMENT WAS PREPARED BY ME OR UNDER MY DIRECTION.

DATED THIS 15th DAY OF October, 2007.

James O. Steves
 JAMES O. STEVES, P.L.S. 6086
 REGISTRATION EXPIRES 12/31/07

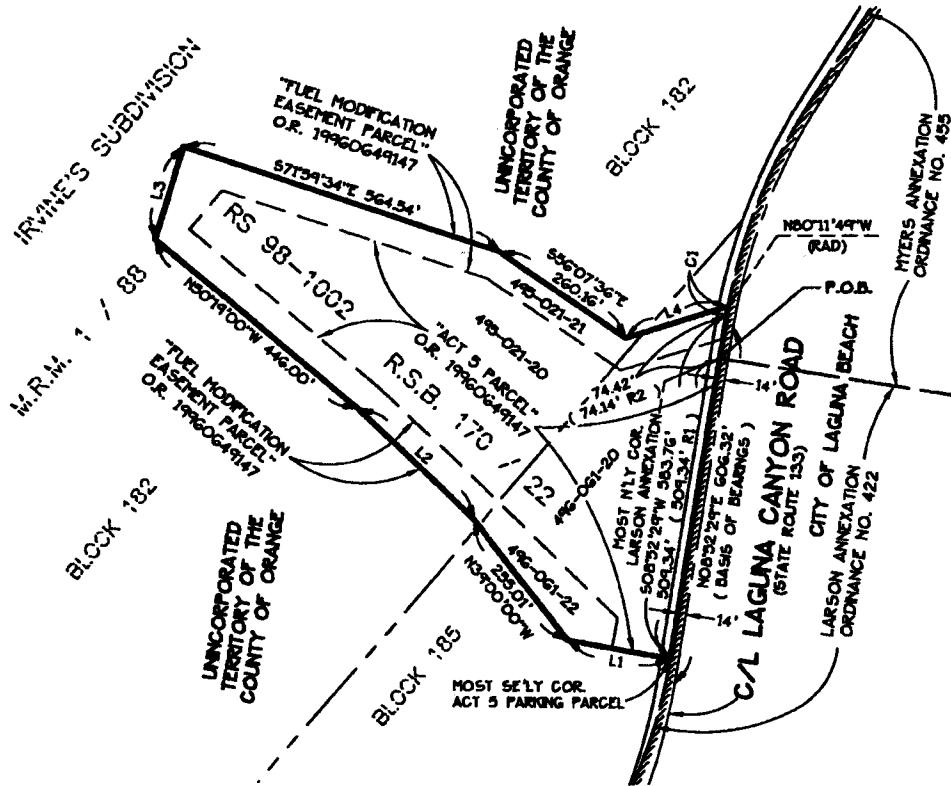


COUNTY SURVEYOR'S STATEMENT

THIS PROPOSAL DOES MEET THE APPROVAL OF THE ORANGE COUNTY SURVEYOR'S OFFICE.

DATED THIS 23RD DAY OF OCTOBER, 2007.

BY: Raymond L. Mathe, DEPUTY
 RAYMOND L. MATHE, L.S. 6185
 EXPIRATION DATE 3/31/08
 COUNTY SURVEYOR



NOTES

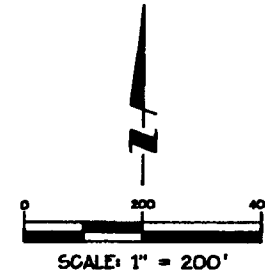
THIS ANNEXATION CONTAINS 8,520 ACRES +/-.

BEARINGS SHOWN HEREON ARE BASED UPON THE BEARING OF NORTH 08°52'29" EAST ALONG THE CENTERLINE OF LAGUNA CANYON ROAD PER RECORD OF SURVEY 98-1002, FILED IN BOOK 170, PAGE 22 OF RECORD OF SURVEYS, IN THE OFFICE OF THE COUNTY RECORDER OF ORANGE COUNTY, CALIFORNIA.

(R1) RECORD DATA PER LARSON ANNEXATION, ORDINANCE NO. 422.

(R2) RECORD DATA PER MYERS ANNEXATION, ORDINANCE NO. 455.

495-021-20 = ASSESSOR'S PARCEL NUMBER (TYPICAL)



LEGEND

- BOUNDARY OF ANNEXATION
- EXISTING CITY OF LAGUNA BEACH BOUNDARY
- BLOCK LINE, IRVINE'S SUBDIVISION

LINE TABLE		
NO.	BEARING	DISTANCE
L1	N7°55'00"W	177.65'
L2	N47°00'00"W	272.00'
L3	N16°05'00"E	164.00'
L4	N72°33'52"E	174.98'

CURVE TABLE			
NO.	RADIUS	DELTA	LENGTH
C1	925.00'	00°35'42"	14.99'

STANTEC CONSULTING INC.
 19 TECHNOLOGY DRIVE
 IRVINE, CA 92618
 949.923.6000
 stan.com

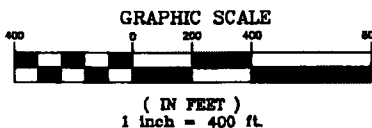
J.N. 2042 302331 DATE: 10/15/07

EXHIBIT "B"

SHEET 1 OF 1

**WHISPERING HILLS REORGANIZATION RO 07-05 ANNEXATION
 TO THE CITY OF SAN JUAN CAPISTRANO AND DETACHMENT
 FROM SANTA MARGARITA WATER DISTRICT**

F.O.B.
 OCS GPS NO. 4404
 N 2133123.106
 E 6142442.702

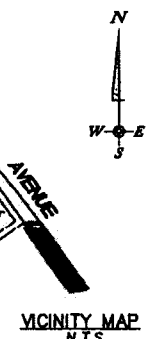
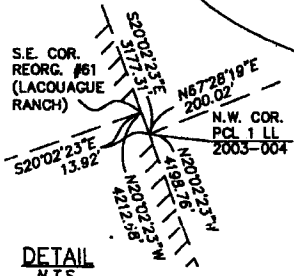
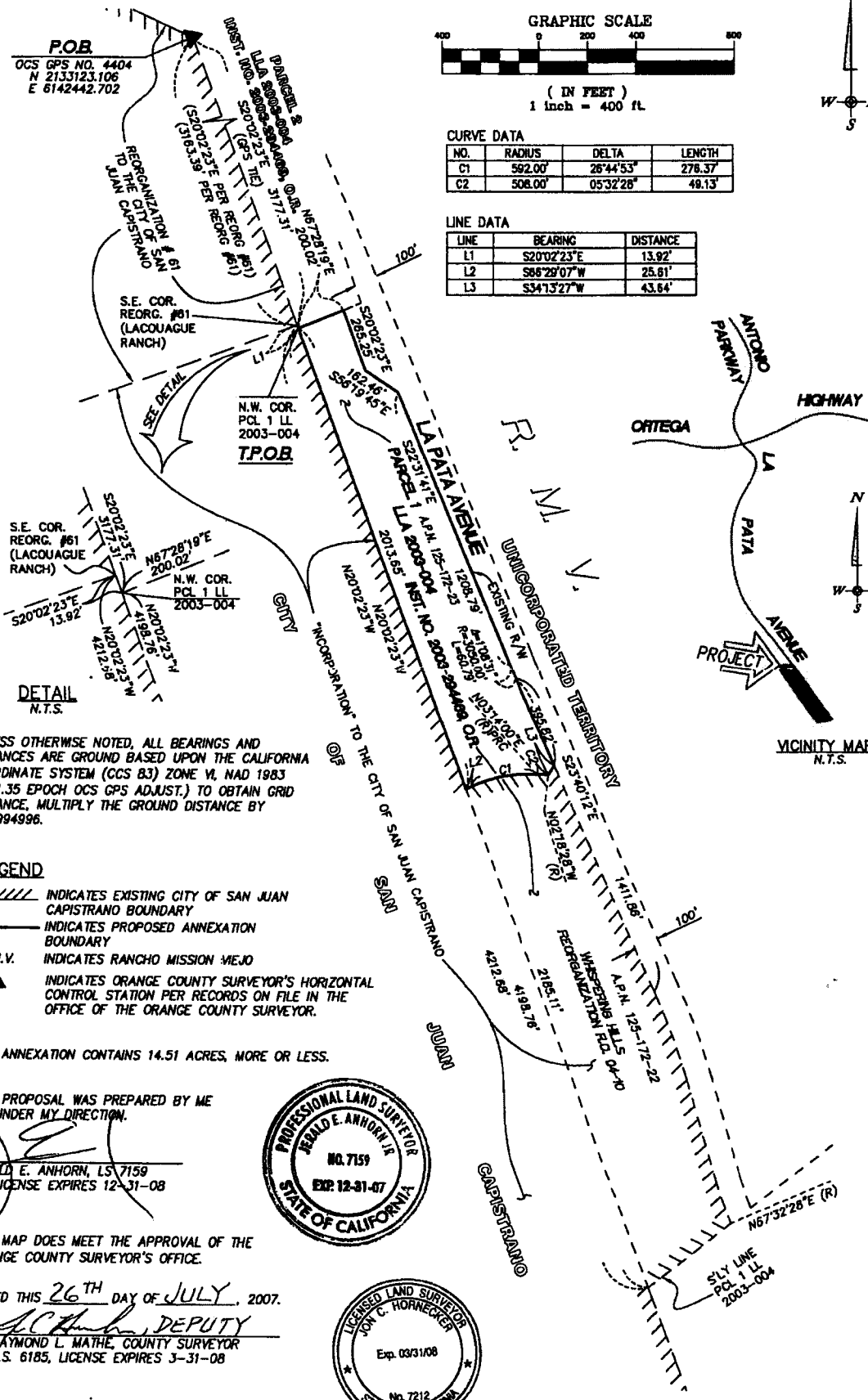


CURVE DATA

NO.	RADIUS	DELTA	LENGTH
C1	592.00'	28°44'53"	276.37'
C2	508.00'	05°32'28"	48.13'

LINE DATA

LINE	BEARING	DISTANCE
L1	S20°02'23"E	13.92'
L2	S86°29'07"W	25.61'
L3	S34°13'27"W	43.64'



UNLESS OTHERWISE NOTED, ALL BEARINGS AND DISTANCES ARE GROUND BASED UPON THE CALIFORNIA COORDINATE SYSTEM (CCS 83) ZONE VI, NAD 1983 (1991.35 EPOCH OCS GPS ADJUST.) TO OBTAIN GRID DISTANCE, MULTIPLY THE GROUND DISTANCE BY 0.99994996.

- LEGEND**
- ////// INDICATES EXISTING CITY OF SAN JUAN CAPISTRANO BOUNDARY
 - INDICATES PROPOSED ANNEXATION BOUNDARY
 - R.M.V. INDICATES RANCHO MISSION VIEJO
 - ▲ INDICATES ORANGE COUNTY SURVEYOR'S HORIZONTAL CONTROL STATION PER RECORDS ON FILE IN THE OFFICE OF THE ORANGE COUNTY SURVEYOR.

THIS ANNEXATION CONTAINS 14.51 ACRES, MORE OR LESS.

THIS PROPOSAL WAS PREPARED BY ME OR UNDER MY DIRECTION.

GERALD E. ANHORN, LS 7159
 MY LICENSE EXPIRES 12-31-08



THIS MAP DOES MEET THE APPROVAL OF THE ORANGE COUNTY SURVEYOR'S OFFICE.

DATED THIS 26TH DAY OF JULY, 2007.

BY: *[Signature]* DEPUTY
 RAYMOND L. MATHE, COUNTY SURVEYOR
 L.S. 6185, LICENSE EXPIRES 3-31-08

