

Orange County Boundary and Annexation Report 2010-2011 (January 1)



1. Southern Island Annexation to Fountain Valley (IA 09-16)
2. Ortega/La Pata Annexation to San Juan Capistrano (CA 09-19)

| | |
|--|-------------------------------|
| | January 1, 2011 Jurisdictions |
| | January 1, 2010 Jurisdictions |

Source: OC Geomatics, 2010 & 2011
 Note: Coastal boundary represents mean high tide circa 2015. Coastal boundary approximated by CDR GIS staff.

Orange County Boundary and Annexation Report 2010-2011

| Jurisdiction | Total Area (Square Miles)* | | Area Change 2010-2011** | Annexation Reference # |
|------------------------|----------------------------|-----------------|----------------------------|---------------------------|
| | January 1, 2010 | January 1, 2011 | | |
| Aliso Viejo | 6.921 | 6.921 | 0 | |
| Anaheim | 50.872 | 50.872 | 0 | |
| Brea | 12.221 | 12.221 | 0 | |
| Buena Park | 10.550 | 10.550 | 0 | |
| Costa Mesa | 15.827 | 15.827 | 0 | |
| Cypress | 6.622 | 6.622 | 0 | |
| Dana Point | 6.602 | 6.602 | 0 | |
| Fountain Valley | 9.048 | 9.065 | 0.016 | 1 |
| Fullerton | 22.447 | 22.447 | 0 | |
| Garden Grove | 17.923 | 17.923 | 0 | |
| Huntington Beach | 27.402 | 27.402 | 0 | |
| Irvine | 65.969 | 65.969 | 0 | |
| Laguna Beach | 8.932 | 8.932 | 0 | |
| Laguna Hills | 6.647 | 6.647 | 0 | |
| Laguna Niguel | 14.787 | 14.787 | 0 | |
| Laguna Woods | 3.306 | 3.306 | 0 | |
| La Habra | 7.360 | 7.360 | 0 | |
| Lake Forest | 16.785 | 16.785 | 0 | |
| La Palma | 1.804 | 1.804 | 0 | |
| Los Alamitos | 4.089 | 4.089 | 0 | |
| Mission Viejo | 17.933 | 17.933 | 0 | |
| Newport Beach | 25.984 | 25.984 | 0 | |
| Orange | 25.783 | 25.783 | 0 | |
| Placentia | 6.621 | 6.621 | 0 | |
| Rancho Santa Margarita | 12.937 | 12.937 | 0 | |
| San Clemente | 18.357 | 18.357 | 0 | |
| San Juan Capistrano | 14.201 | 14.407 | 0.206 | 2 |
| Santa Ana | 27.352 | 27.352 | 0 | |
| Seal Beach | 11.991 | 11.991 | 0 | |
| Stanton | 3.087 | 3.087 | 0 | |
| Tustin | 11.137 | 11.137 | 0 | |
| Villa Park | 2.078 | 2.078 | 0 | |
| Westminster | 10.070 | 10.070 | 0 | |
| Yorba Linda | 19.867 | 19.867 | 0 | |
| Unincorporated | 276.404 | 276.183 | -0.222 | 1,2 |
| Orange County | 799.920 | 799.920 | 0 | |

Detailed Annexation List:

- 1) Southern Island Annexation to the City of Fountain Valley (IA 09-16)
Effective: 1/14/2010
From Unincorporated Orange County to Fountain Valley
Uninhabited
10.45 acres (0.01633 sq. miles)

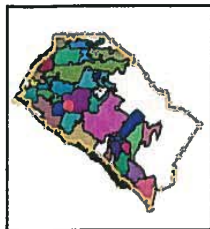
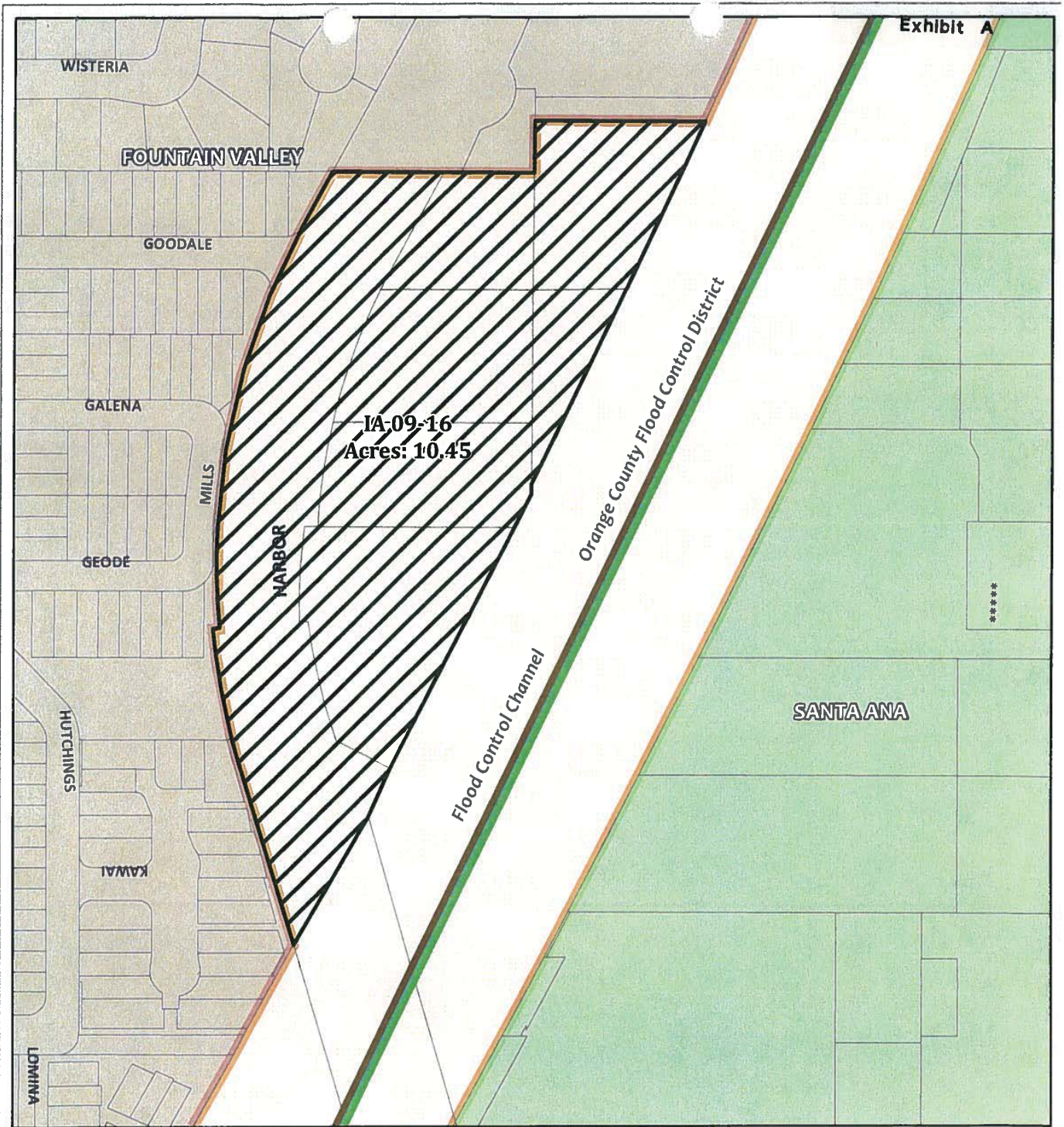
- 2) Ortega/La Pata Annexation to the City of San Juan Capistrano (CA 09-19)
Effective: 1/20/2010
From Unincorporated Orange County to San Juan Capistrano
Uninhabited (neighborhood park)
131.534 acres (0.20552 sq. miles)

Notes:
Benchmark 2015.
Some jurisdictions' legal boundary extends three miles off the coast.
A fixed boundary line at the coast was created in November 2014 based on high-resolution county-wide aerial imagery that was captured on June 19, 2013, to approximate the ocean waterline and to eliminate artificial land area changes to jurisdictions adjacent to the Orange County coast. This coast line does not define any vertical datum such as mean high tide, mean sea level, or mean lower low tide. This reference line was developed through a collaboration of OC Public Works, OC LAFCO, and CDR; it has no legal value; and its purpose is for CDR's use in reporting population density and jurisdictional annexations.
For official legal boundaries, contact the County of Orange Surveyor's office <http://ocpublicworks.com/survey/>

Source: O.C. Geomatics, 2010 & 2011

*Area calculated in ArcGIS by CDR.

**Annual area change totals may not match detailed annexation information due to rounding.



F:\gis\projects\IA09-16\A0916_VicinityMap.pdf

Vicinity Map
Southern Island Annexation to the City of Fountain Valley
IA 09-16



0 450 Feet

- Spheres of Influence**
-  IA 09-16
 -  Fountain Valley
 -  Santa Ana

- City Boundaries**
-  Fountain Valley
 -  Santa Ana
 -  Unincorporated OC

9/25/2009

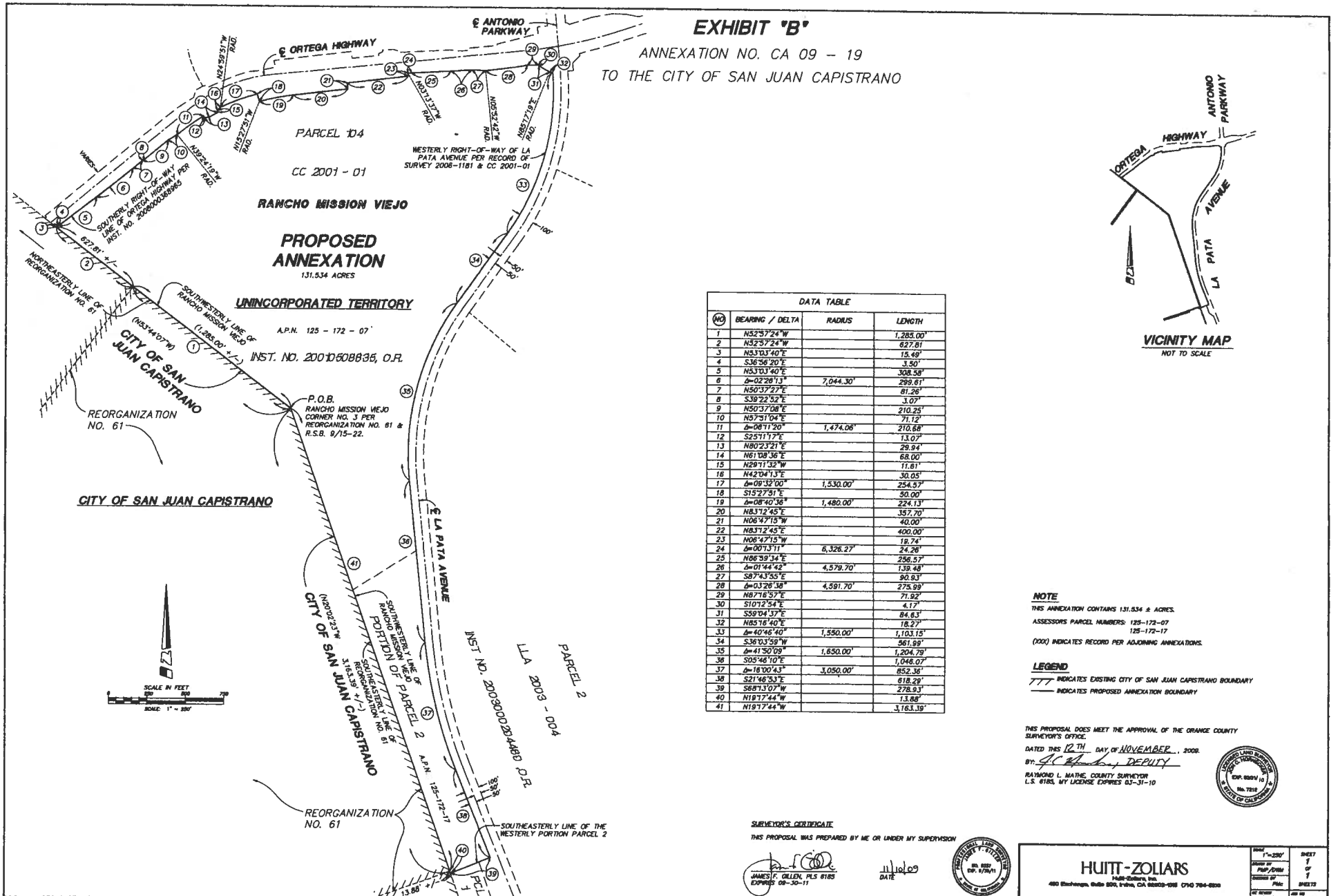


EXHIBIT 'B'
 ANNEXATION NO. CA 09 - 19
 TO THE CITY OF SAN JUAN CAPISTRANO

| NO | BEARING / DELTA | RADIUS | LENGTH |
|----|-----------------|-----------|-----------|
| 1 | N52°57'24" W | | 1,285.00' |
| 2 | N52°57'24" W | | 627.81' |
| 3 | N53°03'40" E | | 15.49' |
| 4 | S36°56'20" E | | 3.50' |
| 5 | N53°03'40" E | | 308.58' |
| 6 | Δ=02°28'13" | 7,044.30' | 299.81' |
| 7 | N50°37'27" E | | 81.26' |
| 8 | S39°22'52" E | | 3.07' |
| 9 | N50°37'08" E | | 210.25' |
| 10 | N57°51'04" E | | 71.12' |
| 11 | Δ=08°11'30" | 1,474.06' | 210.88' |
| 12 | S25°11'17" E | | 13.02' |
| 13 | N80°23'21" E | | 29.94' |
| 14 | N61°08'36" E | | 68.00' |
| 15 | N28°11'32" W | | 11.61' |
| 16 | N42°04'13" E | | 30.05' |
| 17 | Δ=09°32'00" | 1,530.00' | 254.57' |
| 18 | S15°27'51" E | | 50.00' |
| 19 | Δ=08°40'36" | 1,480.00' | 224.13' |
| 20 | N83°12'45" E | | 357.70' |
| 21 | N06°47'15" W | | 40.00' |
| 22 | N83°12'45" E | | 400.00' |
| 23 | N06°47'15" W | | 18.74' |
| 24 | Δ=00°13'11" | 6,326.27' | 24.28' |
| 25 | N86°39'34" E | | 256.57' |
| 26 | Δ=01°44'42" | 4,578.70' | 139.48' |
| 27 | S87°43'55" E | | 90.83' |
| 28 | Δ=03°26'38" | 4,591.70' | 278.99' |
| 29 | N87°18'57" E | | 71.92' |
| 30 | S10°12'54" E | | 4.17' |
| 31 | S59°04'37" E | | 84.63' |
| 32 | N85°16'40" E | | 18.27' |
| 33 | Δ=40°46'40" | 1,550.00' | 1,103.15' |
| 34 | S36°03'59" W | | 561.99' |
| 35 | Δ=41°50'09" | 1,850.00' | 1,204.79' |
| 36 | S05°46'10" E | | 1,048.07' |
| 37 | Δ=18°00'43" | 3,050.00' | 852.36' |
| 38 | S21°46'53" E | | 618.29' |
| 39 | S69°13'07" W | | 278.93' |
| 40 | N18°17'44" W | | 13.66' |
| 41 | N18°17'44" W | | 3,163.39' |

NOTE
 THIS ANNEXATION CONTAINS 131.534 ± ACRES.
 ASSESSOR'S PARCEL NUMBERS: 125-172-07
 125-172-17
 (000) INDICATES RECORD PER ADJOINING ANNEXATIONS.

LEGEND
 --- INDICATES EXISTING CITY OF SAN JUAN CAPISTRANO BOUNDARY
 --- INDICATES PROPOSED ANNEXATION BOUNDARY

THIS PROPOSAL DOES MEET THE APPROVAL OF THE ORANGE COUNTY SURVEYOR'S OFFICE.
 DATED THIS 12TH DAY OF NOVEMBER, 2008.
 BY: *[Signature]* DEPUTY
 RAYMOND L. MATHE, COUNTY SURVEYOR
 L.S. 0183, BY LICENSE EXPIRES 03-31-10



SURVEYOR'S CERTIFICATE
 THIS PROPOSAL WAS PREPARED BY ME OR UNDER MY SUPERVISION

[Signature]
 JAMES F. GILLEN, PLS 0183
 EXPIRES 08-31-11

DATE 11/10/09



HUITT-ZOLLARS
 480 El Estero, Suite 200, Irvine, CA 92614-2008 (714) 784-8200

| | |
|------------------------|-----------------|
| SCALE: 1" = 250' | SHEET 7 OF 7 |
| DATE: 11/10/2009 | DRAWN BY: JMG |
| PROJECT NO: 70-1128-20 | CHECKED BY: JMG |