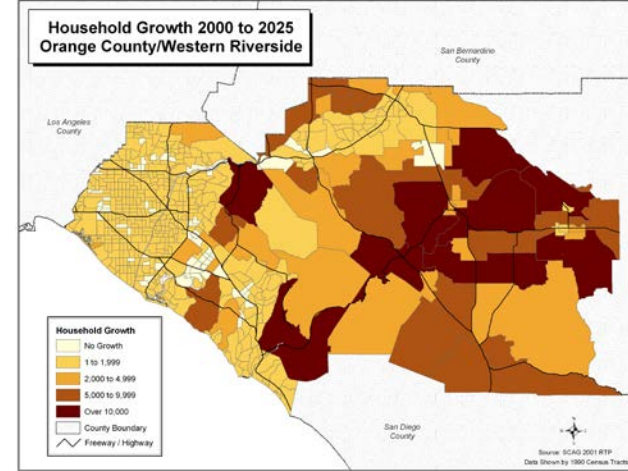


Demographic Mapping and Analysis

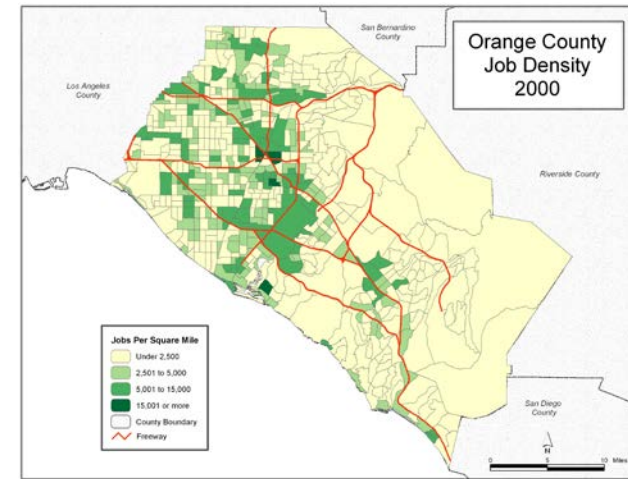
Demographic Profile of area within 5 miles of proposed wireless communication site

Demographic analysis is the basis for many functions: planning, site analysis, regulatory compliance, and marketing. Both the public and private sector can benefit from knowing the current and projected demographics of an area.

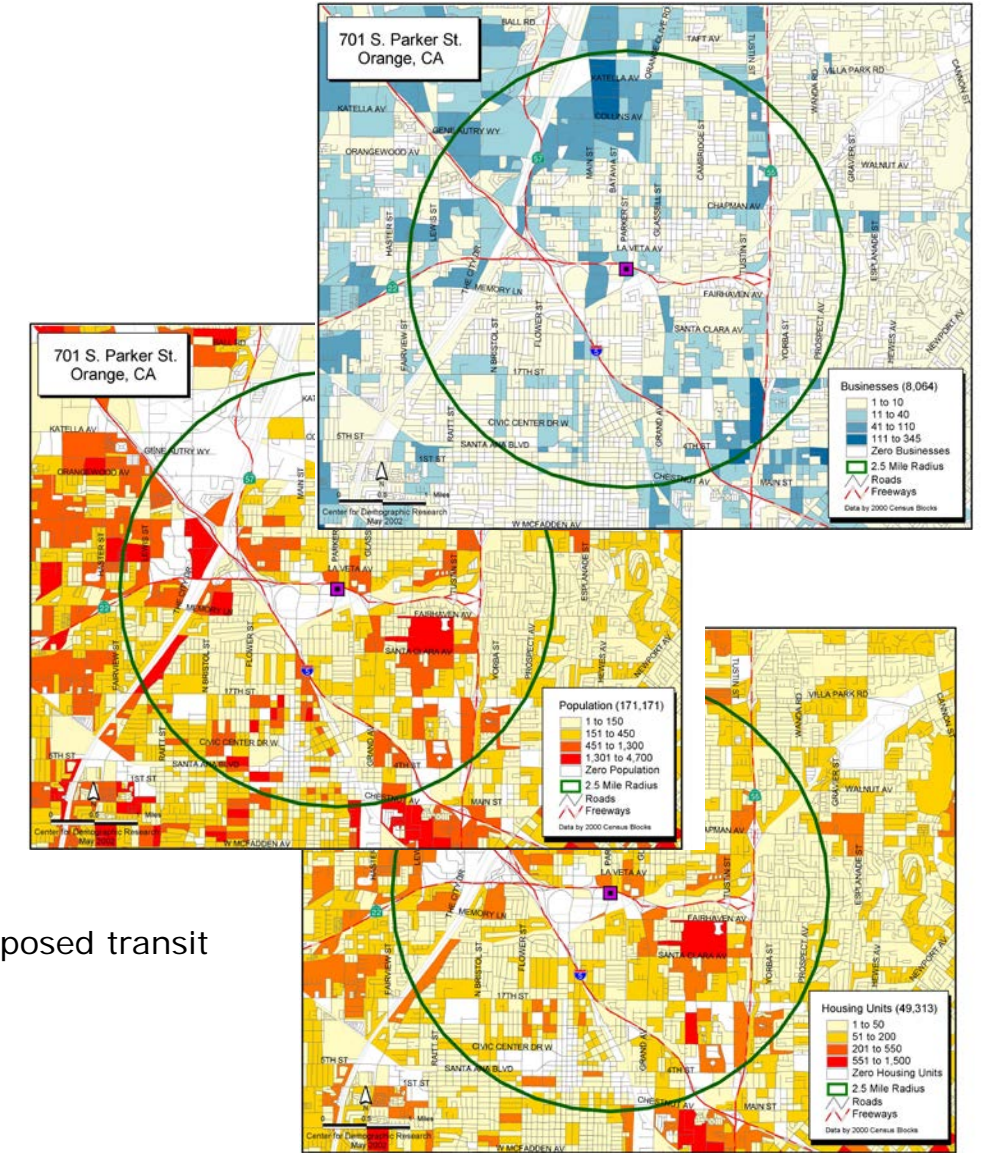
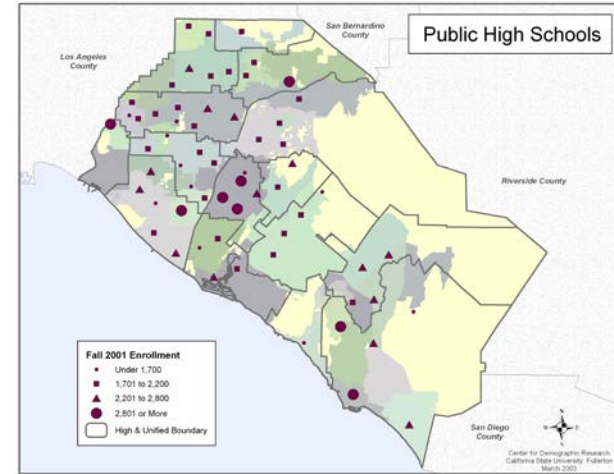
Projected Conditions



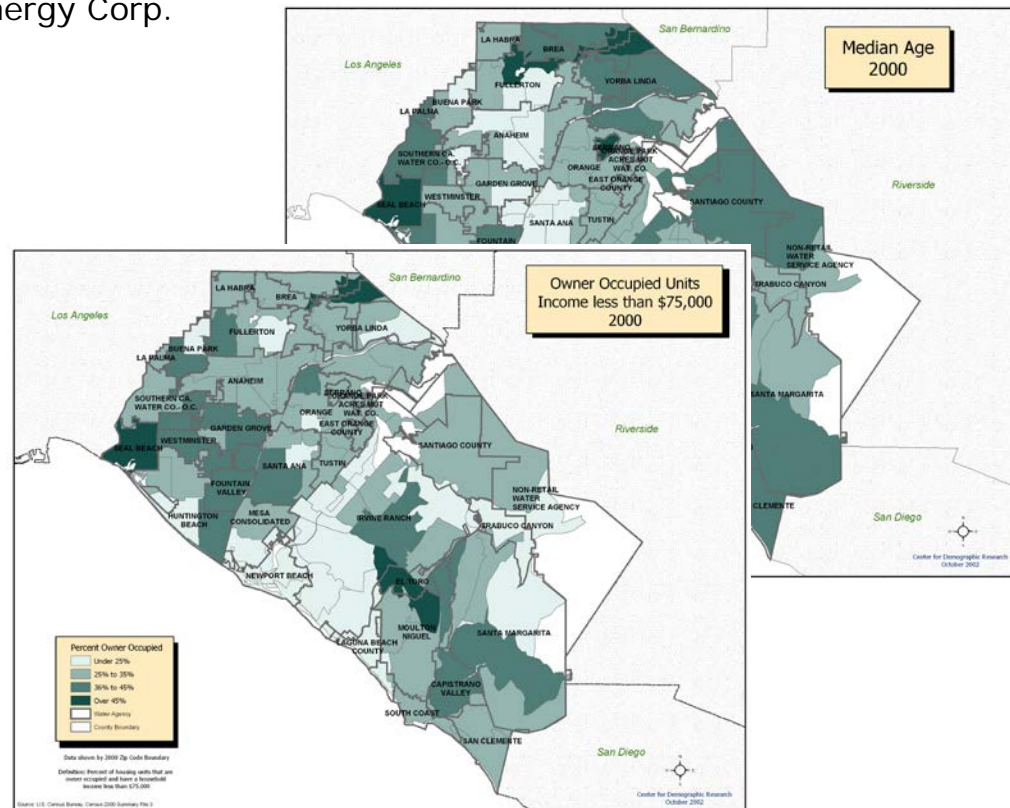
Existing Conditions



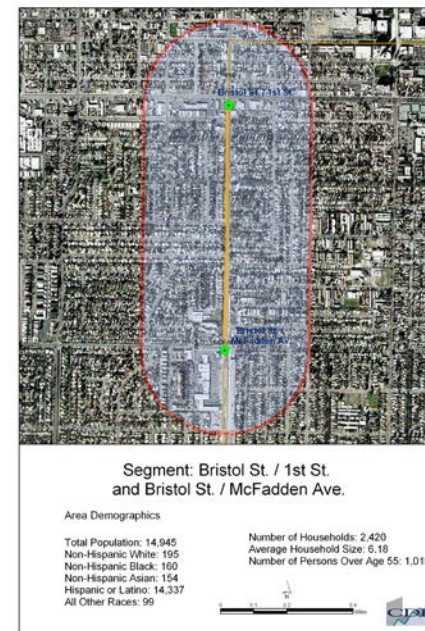
School Enrollment



Demographic maps by zip code and water district boundary for HCG Energy Corp.



Demographic profile of area 1/4 mile from proposed transit station and segment



A GIS-based market analysis or site analysis assists in the evaluation of market opportunity for various services such as communications, transportation systems or retail centers and can estimate the number of potential residential and business customers.