

Cal State **Fullerton**

Welcome to the College of Natural Sciences and Mathematics!

Transfer Student Orientation



NSM Student Success Center

- Your home for advising, tutoring in NSM courses, and a quiet place to study!
- Tutoring is offered Fall and Spring semesters.
 - Intro level courses in all NSM disciplines, and some 200-300 level courses.
- We regularly update our events and workshops board, so stop by and see what is going on. Follow us on Instagram by scanning the QR code for future updates
- We are located in **MH 488**, our hours during the Fall and Spring semesters are **Monday-Friday 9am-5pm**. Student assistants will be available to help with questions and scheduling appointments during this time.



Academic Advising in NSM



Academic Advising in NSM

Specialized Advisors

- Professors in my department (“Faculty Advisors”)
 - Course planning for the following semester
 - Understanding your major requirements
 - Advice from an expert in your field
 - All NSM majors must meet with a faculty advisor before Fall & Spring registration
- Health Professions Advising
- Career Specialist



Academic Advising in NSM

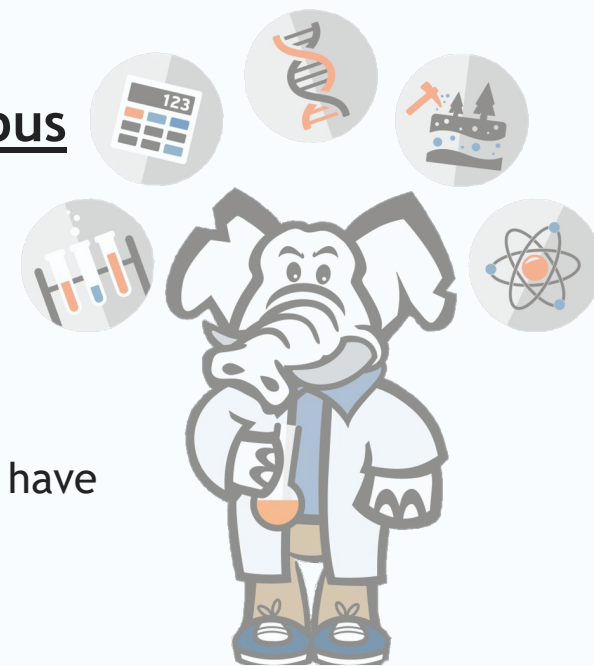
Student Success Team (SST) Advisors

- Help with understanding major and degree requirements
- Act as a guide for navigating CSUF, which may be different from your previous college
- Assist with enrollment and scheduling issues
- Help with exploring interests, setting goals, and resolving academic challenges
- **If you ever need help but are unsure of where to go, come to us!**
- Every incoming NSM student student is assigned to an SST Advisor



General Education for Transfers

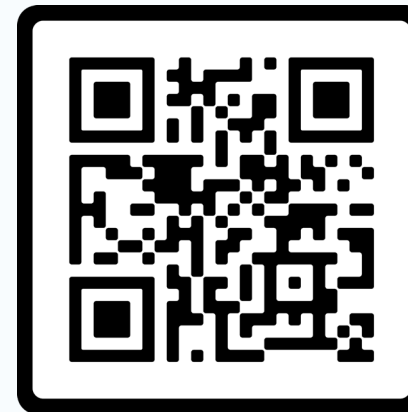
- If you are “GE Certified” from a California Community College
 - Most if not all lower division GE requirements will be complete
 - You may still need to take US History and/or US Government if you have not already passed **both** of these classes
 - You may need to satisfy Cultural Diversity, which can overlap with an upper division GE
- All students must complete 3 upper division (300-499) GE’s at a CSU campus
 - Science & Math (some NSM majors take MATH 338 - Statistics for Natural Sciences)
 - Arts & Humanities
 - Social Science
- Evaluations of transfer credit will be finished by the end of fall semester
 - Until then, stay away from lower division (100-299) GEs until you know what credit you have



Raise Transfer Program (RTP)

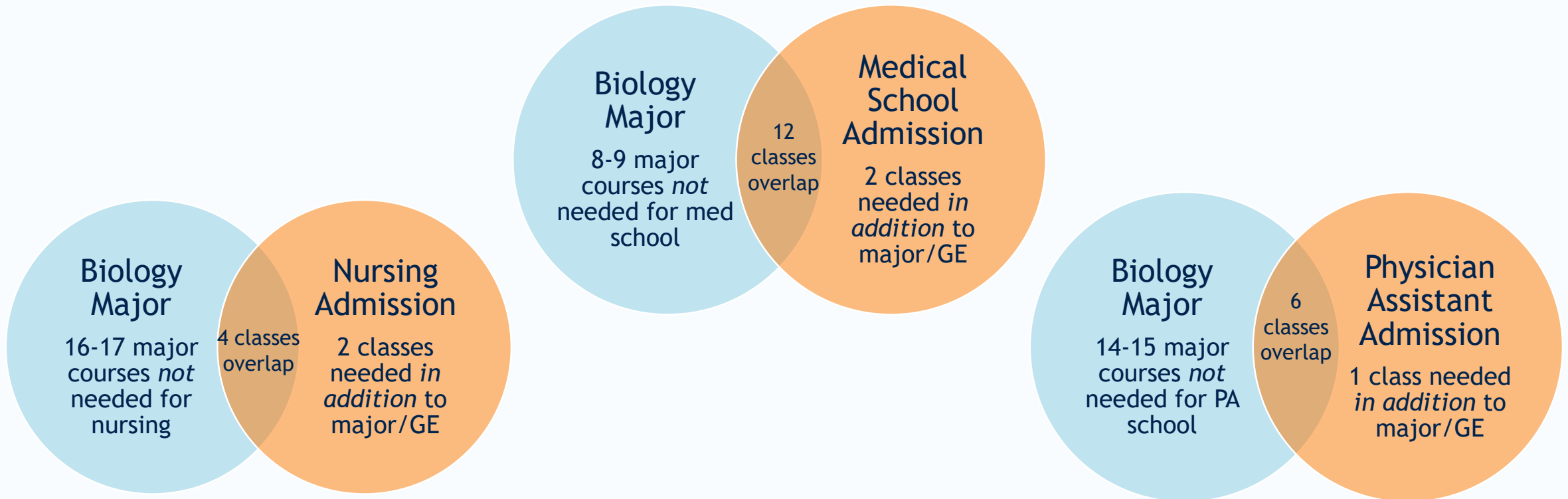
- Program for students transferring from community colleges
- Benefits
 - Peer advising and academic support
 - Preparation and support for STEM internships
 - Preparation for getting involved in research
 - Priority registration
- Transfer Resource Center in McCarthy Hall 525
 - Supports all transfer students

Register for RTP!



Health Professions Advising Office (HPAO)

A pre-health student is any student seeking admission to a health professional program after they complete their B.A./B.S. degree.



Health Professions Advising Office (HPAO)

Advising:

- Pre-requisite courses
- Major choice
- Extracurricular involvement
- Gap/service year
- Application process



Lauren Meier,
Assistant Director

E:
lmeier@fullerton.edu
P:
657-278-3349

Pre-health 101 workshops coming this fall!

Be in the know!

Email hpadvising@fullerton.edu with your name, email, and CWID to be added to the listserv and receive important information about opportunities for CSU Fullerton students.

Career Advising

Help with all things career and applying to grad school

Chanda Ishisaka
NSM Career Specialist



Appointments:



Follow us
@csufcareer





SCHOOLSFIRST[®]
FEDERAL CREDIT UNION

Center for Careers in Teaching
COLLEGE OF EDUCATION

Education Classroom (EC) building room 379
(657) 278-7130

<http://ed.fullerton.edu/cct>

(click “Advising” tab for new student info)

IG: @csuf_cct

- Provide resources and support to students interested in a career in teaching.
- Attend one of our Orientation webinars for future teachers.
- Enter your information on our interest form to get more details.



Bit.ly/CCT_Interest

COMMUNITIES FOR FUTURE TEACHERS

MEN OF COLOR IN EDUCATION

MEET & CONNECT
A program dedicated to supporting Black and Latino male students who aspire to impact communities through teaching

Join Now!
[QR Code]

MONTHLY EVENTS
Pollak Library North-403
Between 1:30 pm - 4:00 pm

CENTER FOR CAREERS IN TEACHING

man of color in education
CSUF

@MCE_CSUF CSUF | COLLEGE OF EDUCATION

TITAN FUTURE TEACHERS

CONNECT. PREPARE. ADVOCATE.

Program Application open:
June 2 - July 21
IG @csuf_tft for more details

CALIFORNIA STATE UNIVERSITY FULLERTON COLLEGE OF EDUCATION

Key Takeaways

- Keep an eye on your CSUF email
 - Important CSUF policies and procedures you need to know
 - How to read your Titan Degree Audit and track your progress toward graduation
- If you only remember two things today...
 - Check your CSUF email regularly
 - Reach out to your academic advisor if you ever need help



GO TITANS

Axis Avalos

Last Name A-T

axavalos@fullerton.edu

Tanya Kim

Last Name U-Z

Athletes

Fullerton Finish

Veterans

takim@fullerton.edu

