



Health Center Facility Fee

Student Fee Advisory Committee Presentation

Kerri Boyd Crooks, MS, MCHES

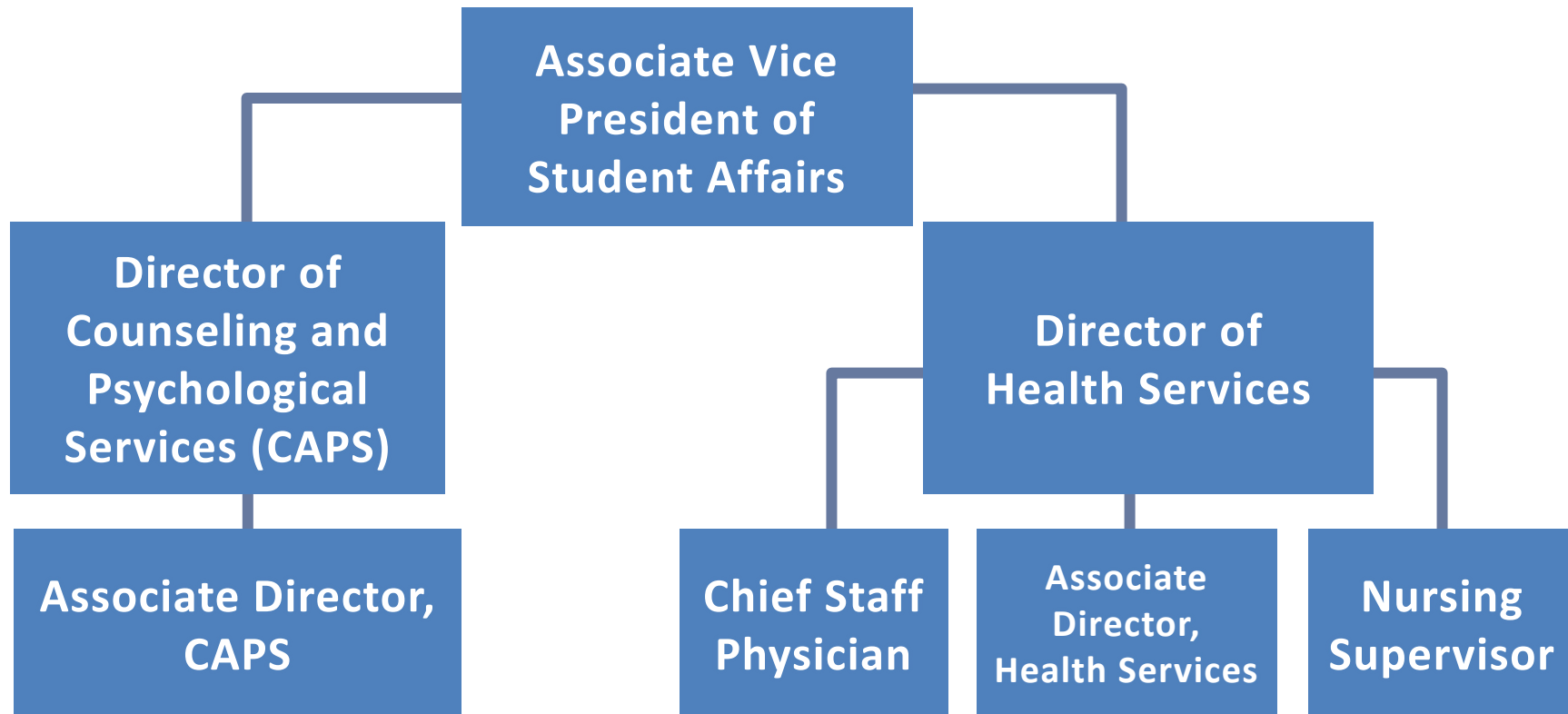
Associate Director, TitanHEALTH

February 22, 2024

Overview

- Governance
- History
- Purpose
- Revenues and Expenditures
- Questions

Governance – Student Wellness Management Team

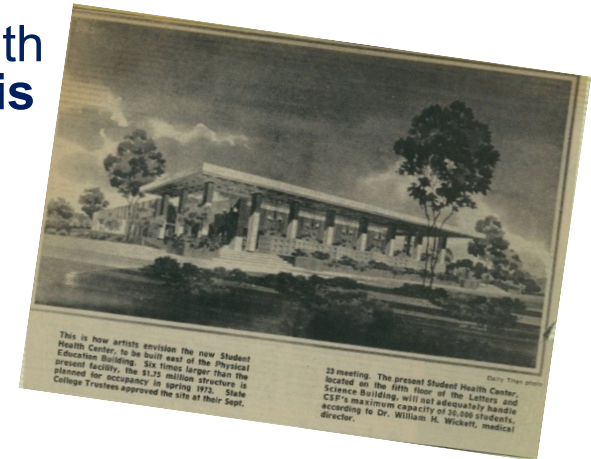


Governance

- CSU Executive Order 943
- AAAHC (Accreditation Association of Ambulatory Health Care)
- SHAC (Student Health Advisory Committee)
 - *Students, Faculty, Staff*
- Management Team
 - *Associate Vice President, Wellness and Care Services*
 - *Director, Health Services*
 - *Associate Director, Administrative and Prevention Services*
 - *Director, Counseling and Psychological Services*
 - *Associate Director, CAPS*
 - *Chief Staff Physician, Health Services*
 - *Nursing Supervisor, Health Services*

History

- Started Early **1970s** to pay for new building, at a cost \$1.75M
- \$3 per semester/\$6 per academic year baseline, with incremental increase each semester. **Current fee is \$3.48/semester.**
- The development and operation of health center facilities, on CSU campuses, has been authorized as a self-supporting program.
- Education Code statutory authority permits the trustees to establish a mandatory facility fee for the construction and maintenance of health center facilities.
- The statutes in the CSUBond Act of **1947** permit the Board of Trustees to use an established mandatory health center facility fee as a revenue source to repay bonds issued by the Trustees in order to fund the construction of health center facilities on CSU campuses.



Purpose

- Facilities maintenance
- IT and infrastructure costs
- Building upgrades
- Repairs
- Equipment



2023-2024 System-wide Health Facilities Fee

Monterey Bay	\$0	San Luis Obispo	\$12
Bakersfield	\$6	Maritime	\$14
Channel Islands	\$6	San Bernardino	\$31
Chico	\$6	Stanislaus	\$32
Dominguez Hills	\$6	San Marcos	\$40
East Bay	\$6	Sonoma	\$46
Fresno	\$6	San Diego	\$50
Los Angeles	\$6	Sacramento	\$56
Northridge	\$6	Humboldt	\$66
Pomona	\$6	San Francisco	\$72
Fullerton	\$7	San Jose	\$76
Long Beach	\$10		

Average: \$24.61

CSUF fee is approx. \$17 less than the average.

Revenue and Expenses 2022-2023

- Revenue
 - Summer 2022 \$ 29,296.35
 - Fall 2022 \$137,357.32
 - Spring 2023 \$129,769.11
 - Total Revenue \$296,422.78**
- Expenses
 - State Pro Rata \$ 11,741.00
 - Chancellor's Office \$ 27,755.00
 - Other Expenses \$284,590.32
 - Total Expenses \$324,086.32**

Upcoming Projects (2023-2024)

Project	Est. Expense
Titan Hall/CAPS Expansion	\$250,000+ (in process)
Laboratory Renovation	\$750,000 (in process)
Office Renovations (SHCC-W)	\$100,000 (in process)
Computer/Software Upgrades	\$150,000 (in process)
SHCC-East Paint and Flooring	\$100,000
Feasibility Study	\$50,000 - \$100,000
Total Projected Projects	\$1,450,000

Questions