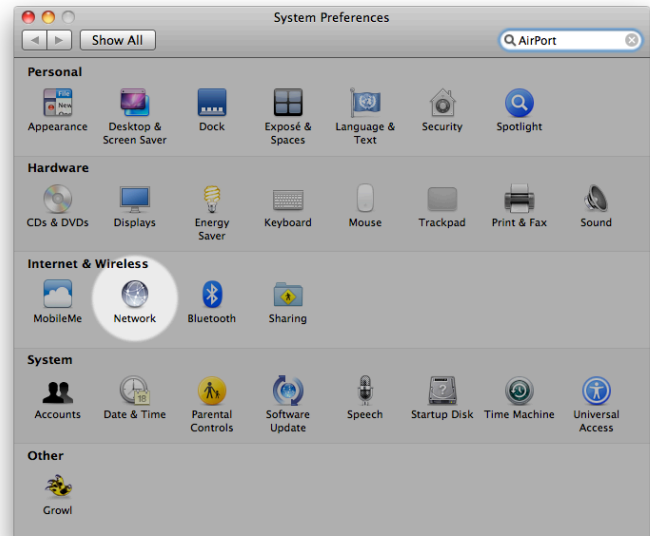


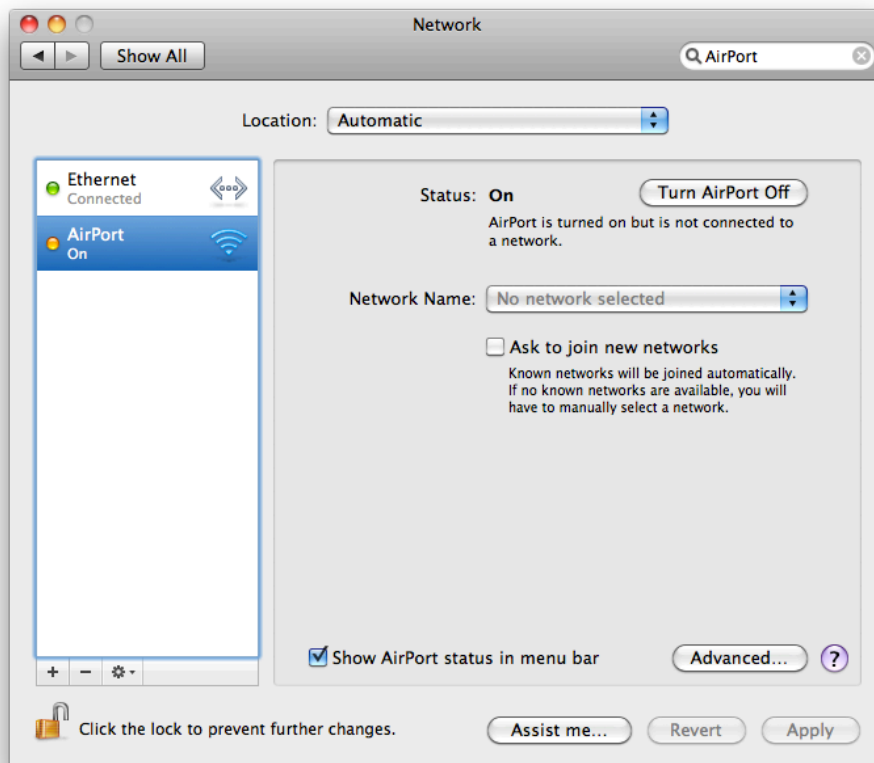
Wireless Network Setup for Mac OS X*

*Please note: these instructions will work on OS X 10.5 (Leopard) and OS X 10.6 (Snow Leopard). For help configuring previous OS X versions, please see the Help Desk

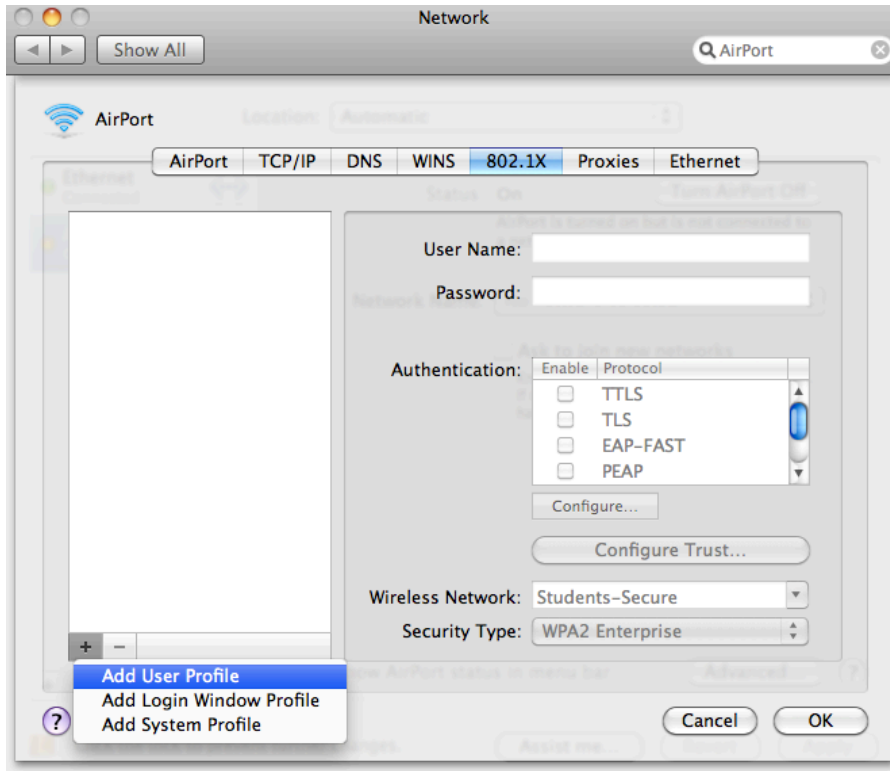
1. From the main Apple menu, select System Preferences.
2. Navigate to Network settings



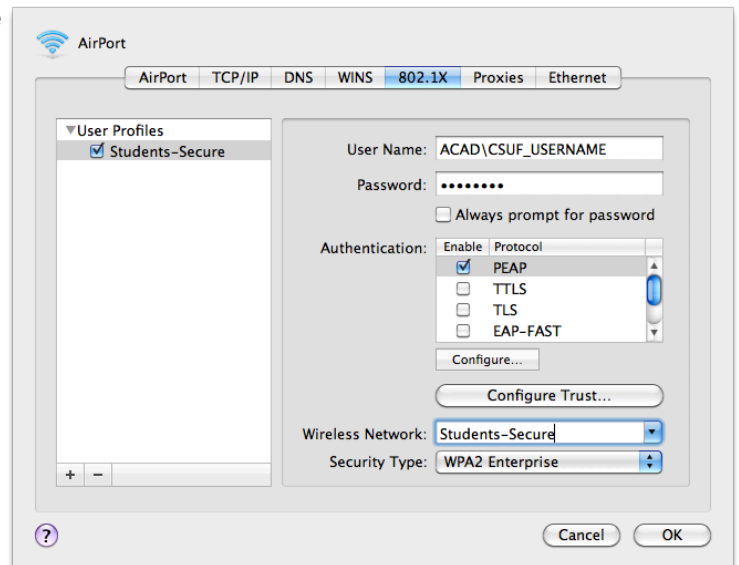
3. Select the wireless interface (usually named AirPort), and click Advanced



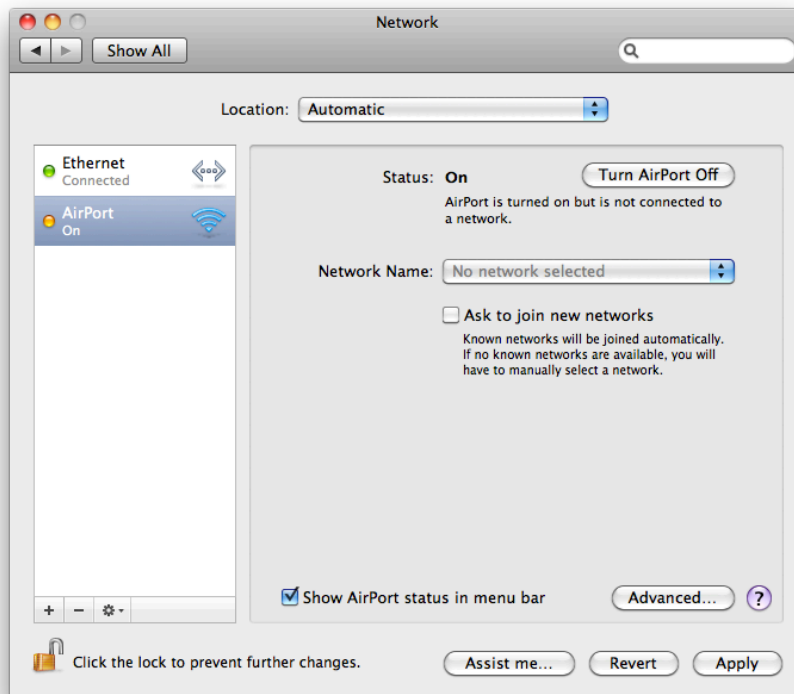
4. Navigate to 802.1X tab, click the Add (+), and select “Add User Profile” option.



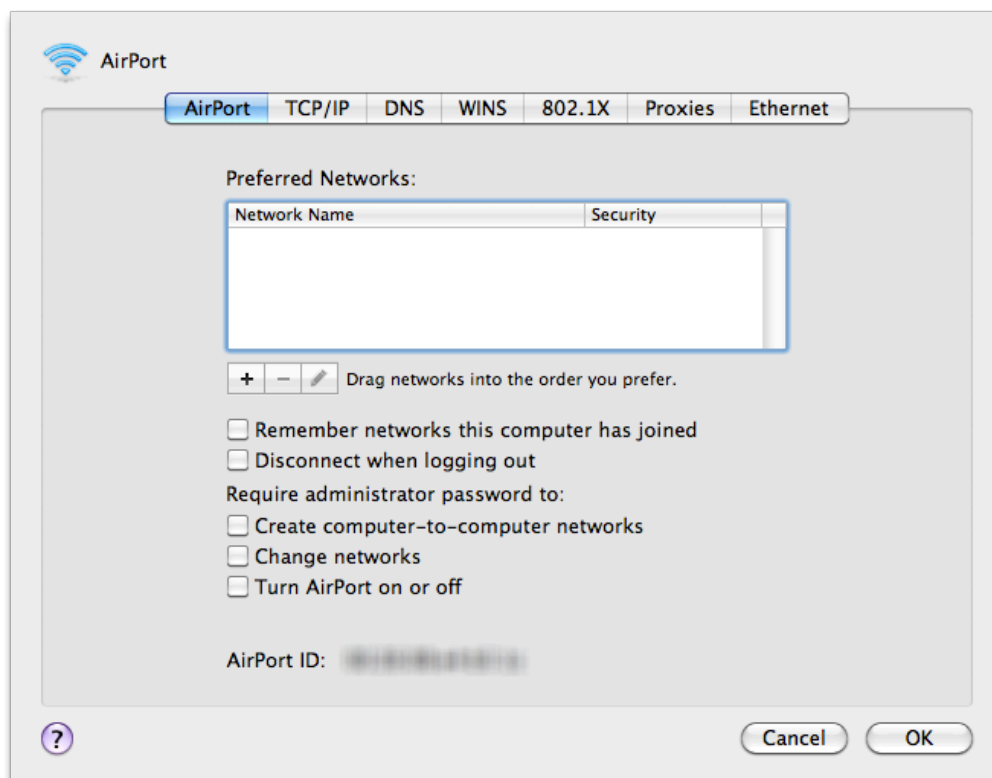
5. Select the profile you just added and...
- A. Name it “Students-Secure”
 - B. User Name: ACAD\CSUF_USERNAME
 - C. Password: Your CSUF Portal Password
 - D. Authentication: check PEAP
 - E. Wireless Network: Students-Secure
 - F. Security Type: WPA2-Enterprise



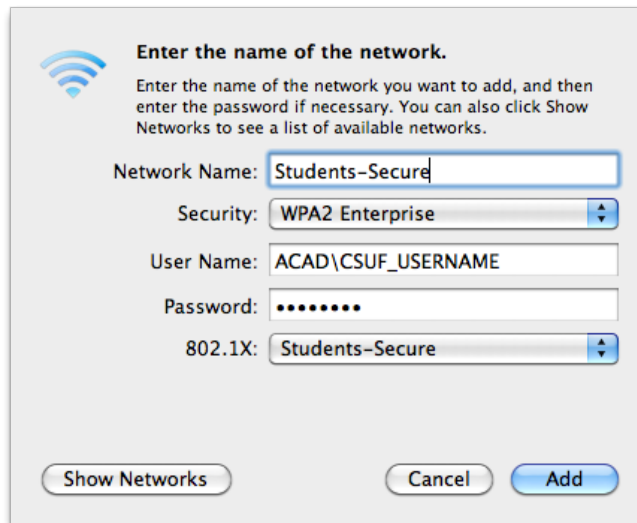
6. Click OK; the Advanced window will close. Press Apply



7. Make sure the above steps are completed correctly, and click Advanced again.
8. Proceed to the AirPort tab



9. Click the Add (+) button to add a new network the the Preferred Networks list. The following window will appear:

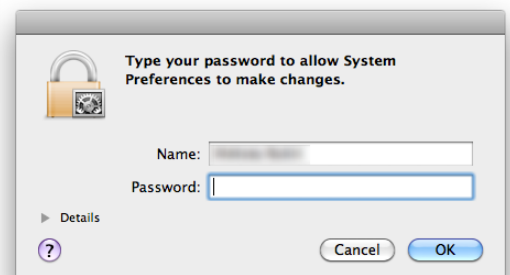


10. Enter the following:
- A. Network Name: Students-Secure
 - B. Security: WPA2 Enterprise
 - C. User Name: ACAD\CSUF_USERNAME
 - D. Password: CSUF Portal password
 - E. 802.1X: Select the “Students-Secure” 802.1X authentication profile you just created from the drop down list
 - F. Click Add, then OK and Apply. AirPort will now search for the network.

11. The security certificate will need to be verified during the first connection attempt. The following window will appear. Click Continue.



- A. You may have to enter your personal Mac password to confirm the connection



12. That's it! Enjoy the security of the WPA2 Enterprise network. This process will need to be repeated only if you update or reset your portal password. Otherwise, the network will connect automatically once you are on campus.