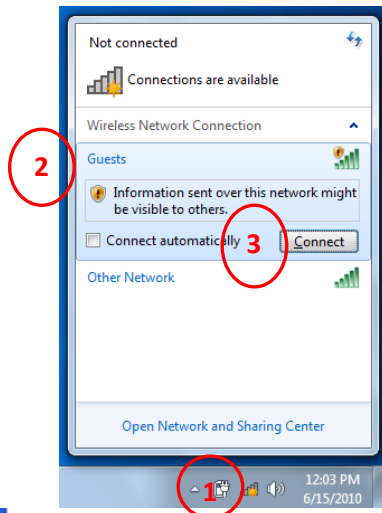

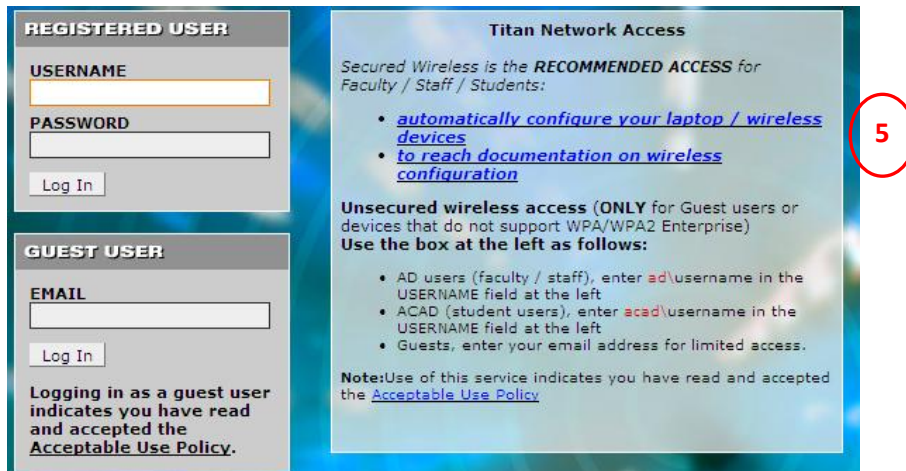


Windows 7 Student Wireless Network Authentication

1. Click on the wireless radio by the System Clock
2. Click **"Guest"** Wireless Network
3. Click **Connect**



4. Open **Internet Explorer**  (Wireless Page Will Automatically Open)
5. Click on **Automatically Configure your laptop /Wireless devices**



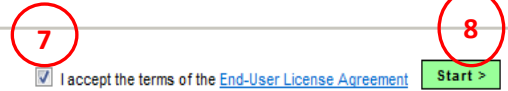
6. Click on **Students**



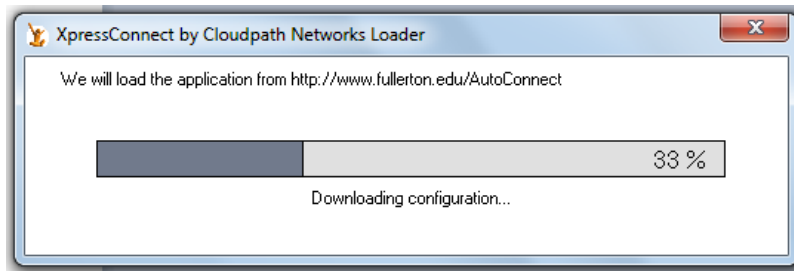
7. Check the check box for “I accept terms...”
8. Click **Start**

XpressConnect will attempt to load automatically using a Java Applet or ActiveX. If you prefer, you may [load XpressConnect manually](#).

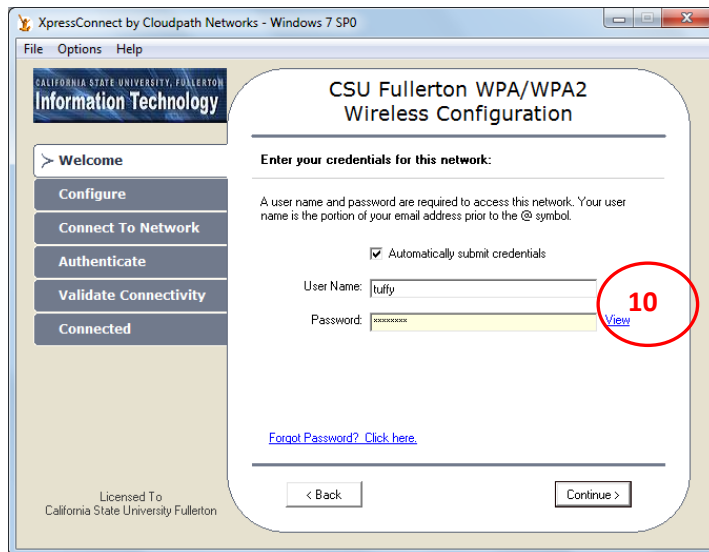
started, simply accept the End-User License Agreement and click 'Start'.



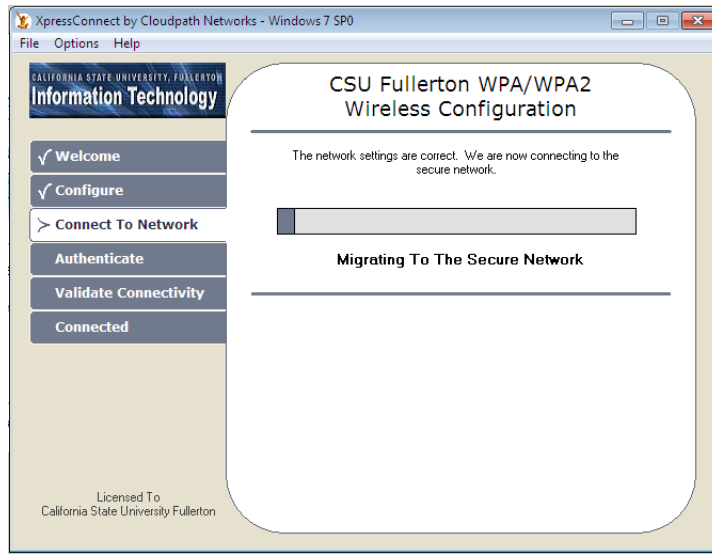
9. Wait a few minutes for loading



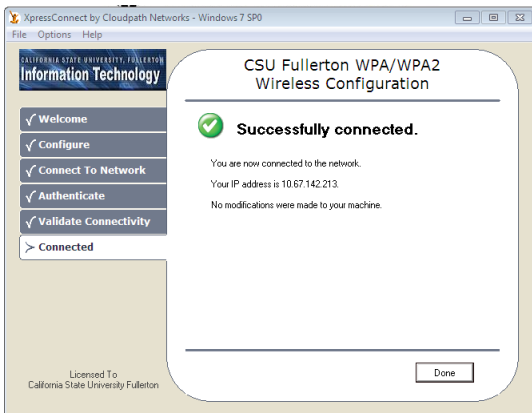
10. Enter Your **Username** and **Password** (Portal Login Information)
11. Click “**Continue**”



12. Follow the Screen's Instruction



13. Click "Done"



14. **Finished.** You are now authenticated to the **Student's Wireless network.**